



STANFORD
CENTER ON
LONGEVITY

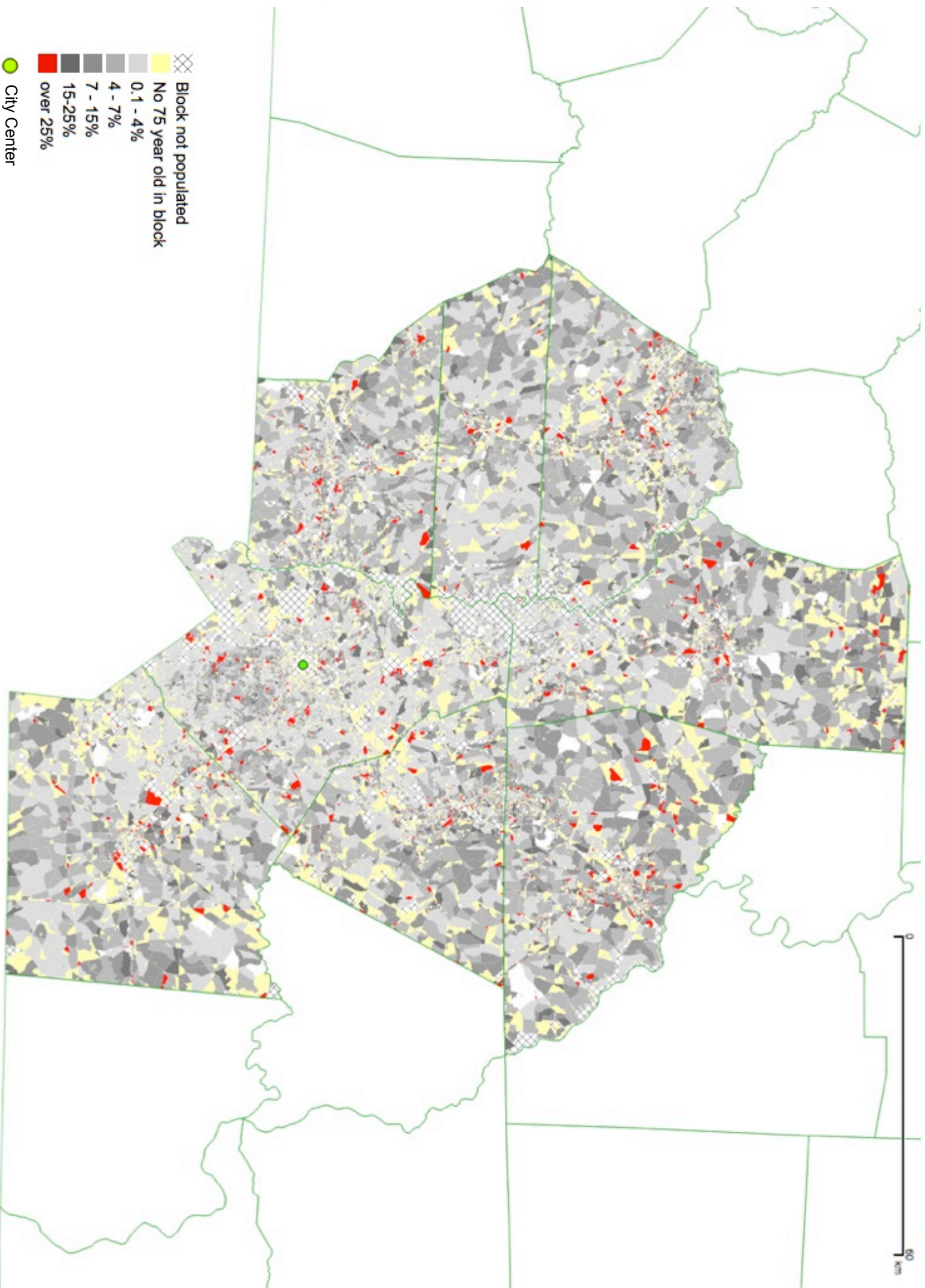
Attachment D

*Homes for an Aging America:
Priorities for Research and Federal Action*

Charlotte, NC Age Maps

December 13, 2012

Claudia Engel
Academic Technology Specialist
Stanford Libraries; Lecturer,
Department of Anthropology

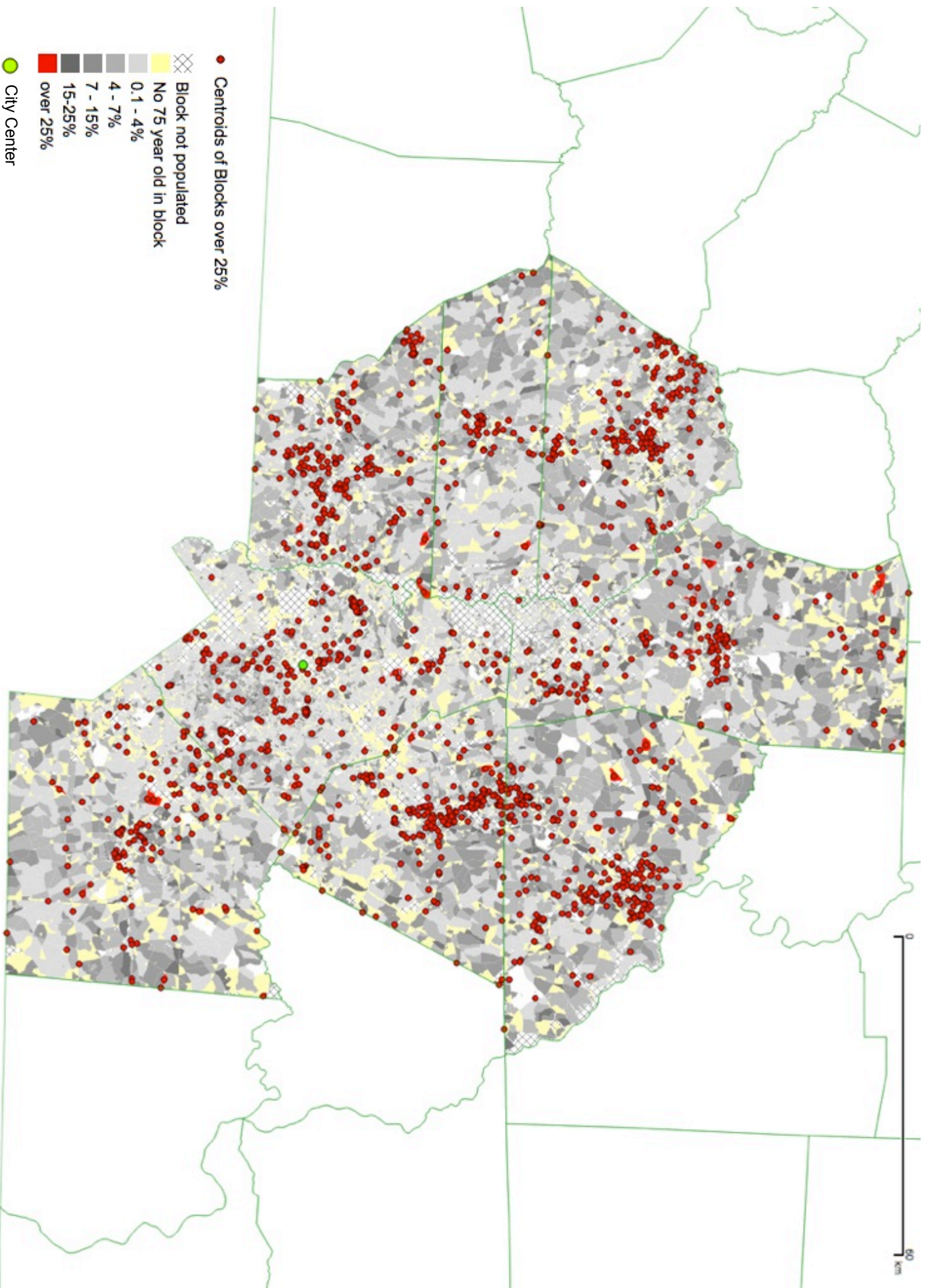


☒ Block not populated
 No 75 year old in block

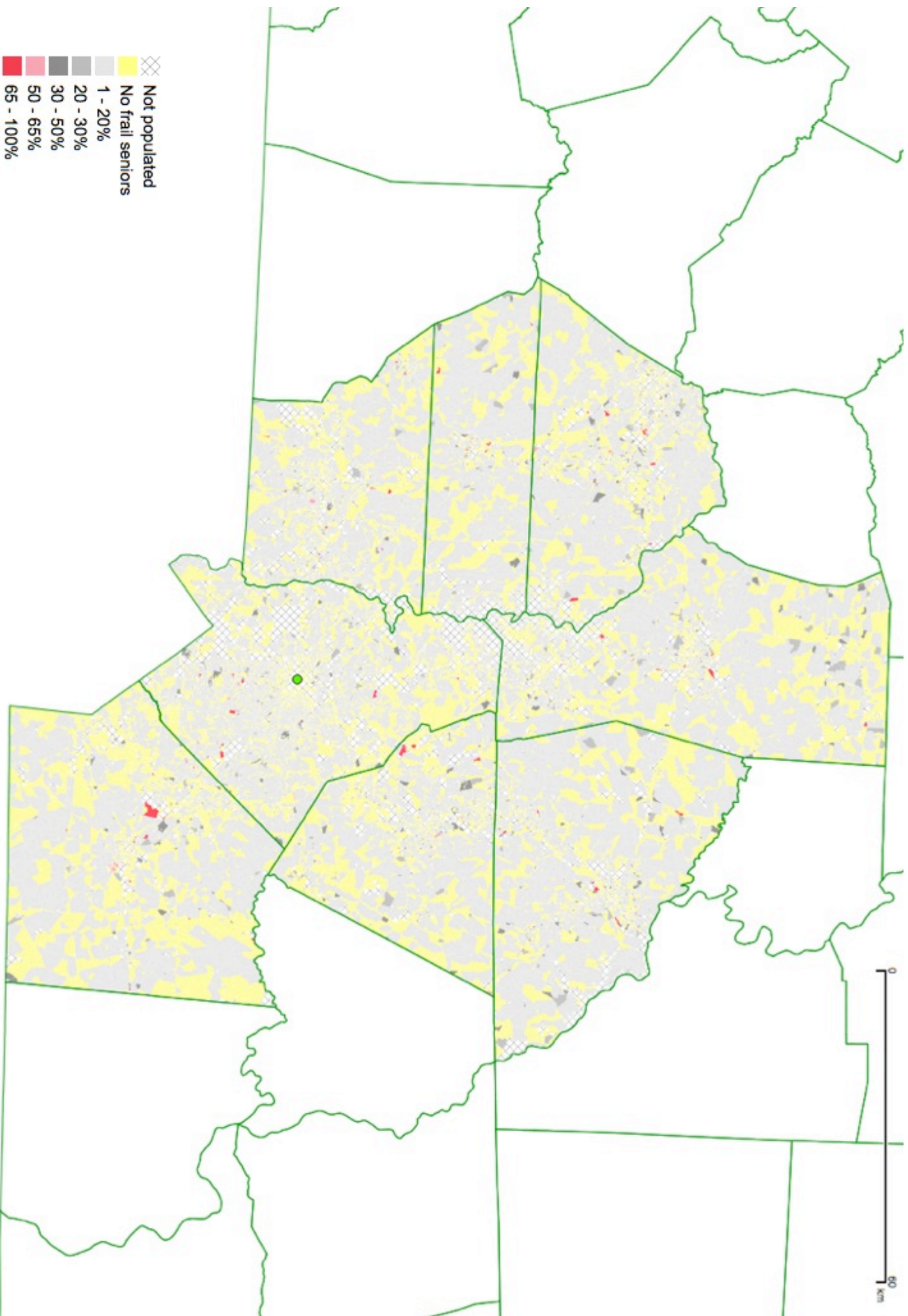
0.1 - 4%
 4 - 7%
 7 - 15%
 15-25%
 over 25%

● City Center

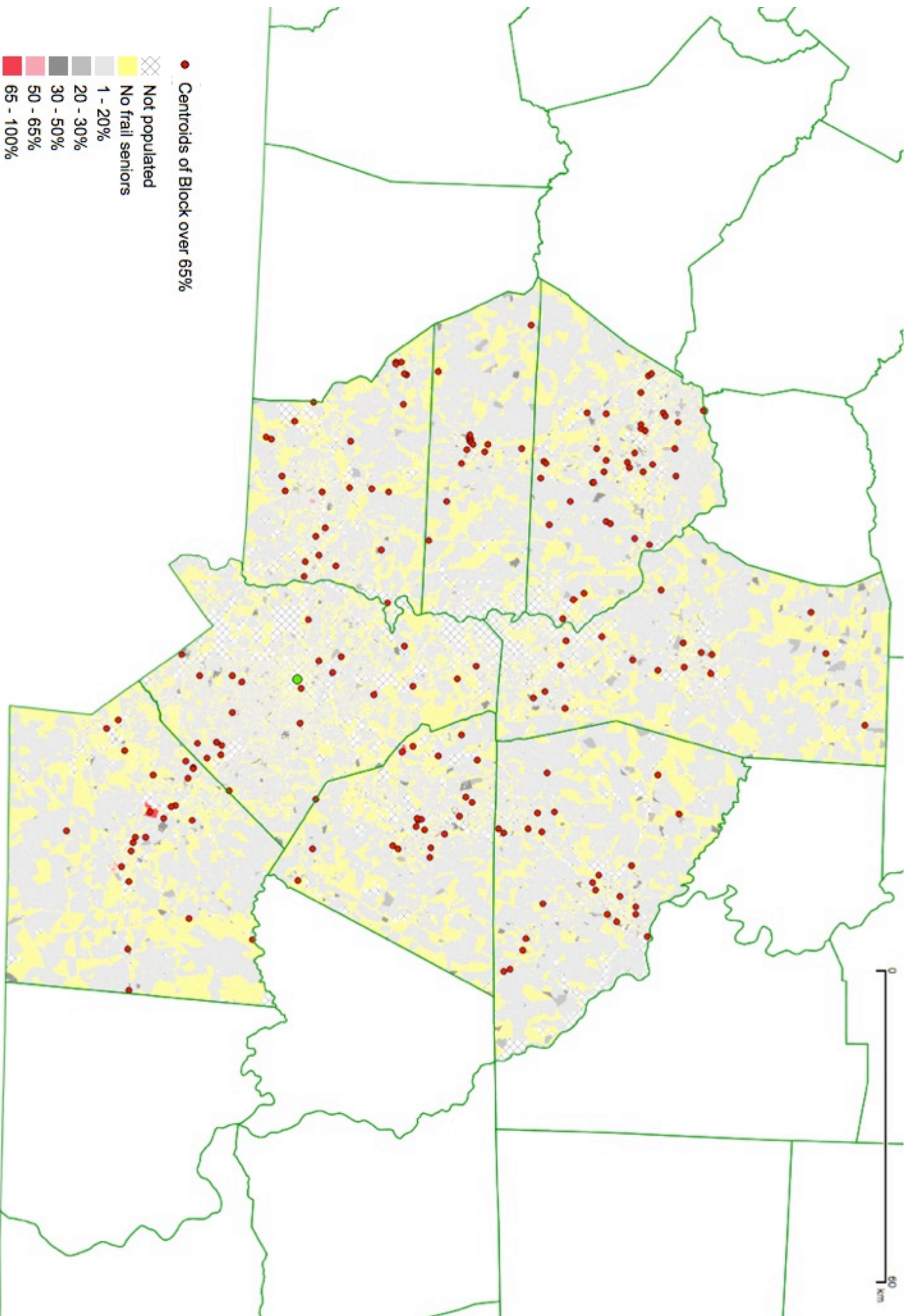
Charlotte, NC and surrounding counties: Percent aged 75 and over 2010 Census Blocks



Charlotte, NC and surrounding counties: Percent aged 75 and over 2010 Census Blocks



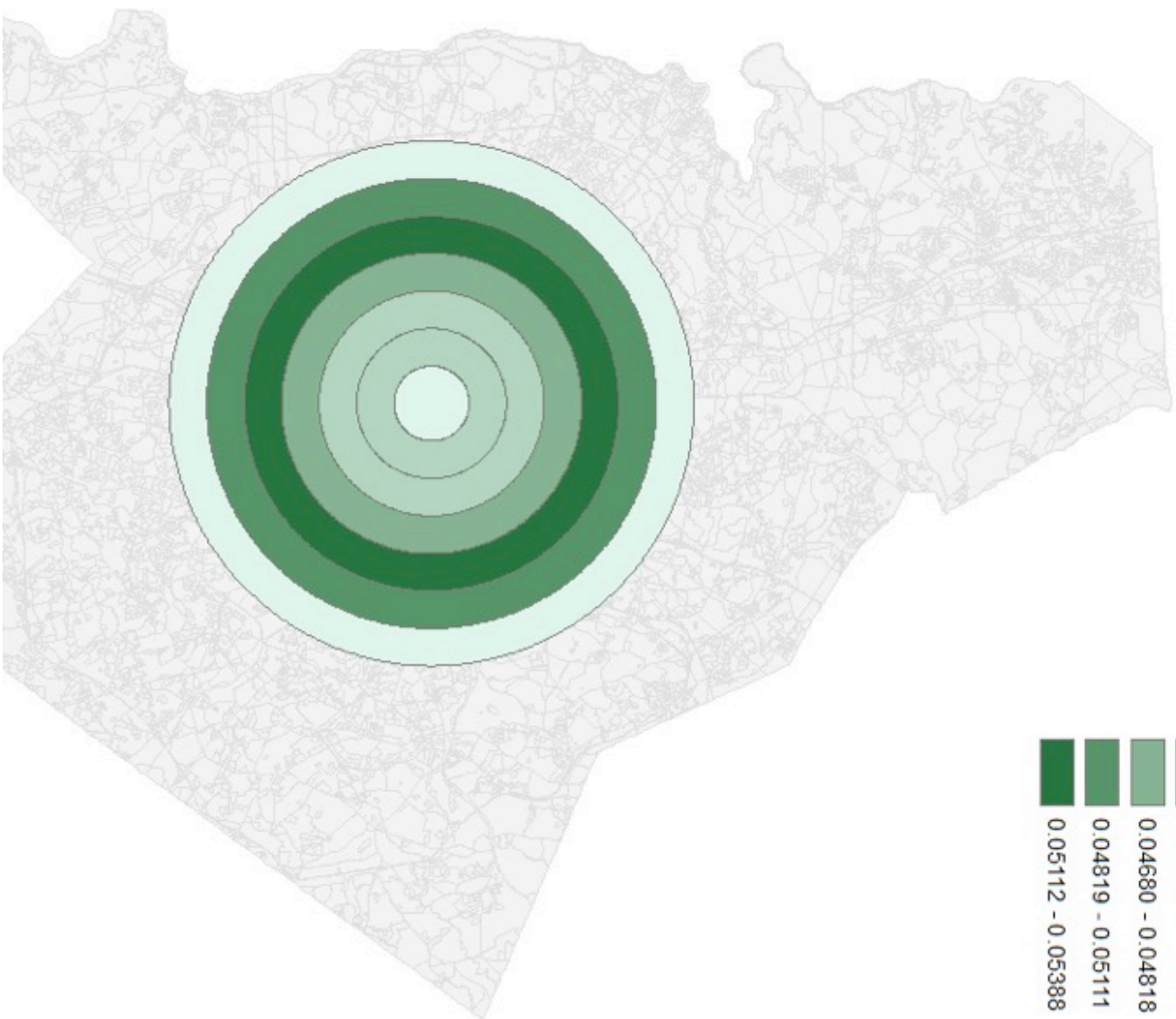
Charlotte, NC and surrounding counties: Pct. Households with Frail Seniors (75 and over, living alone) 2010 Census Blocks



Charlotte, NC and surrounding counties: Pct. Households with Frail Seniors (75 and over, living alone) 2010 Census Blocks



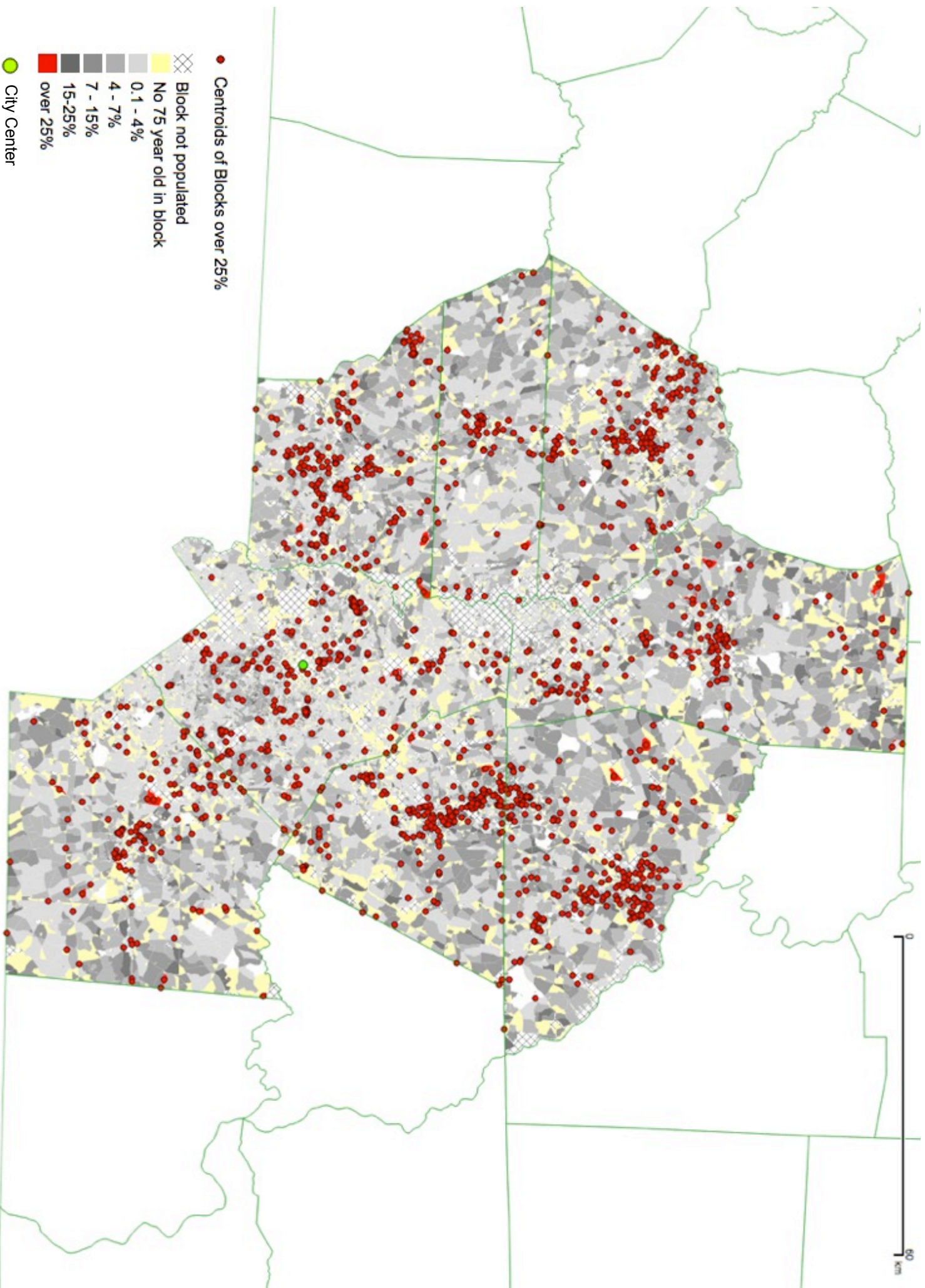
Charlotte, NC: Percent aged 75 and over 2010 Census Blocks



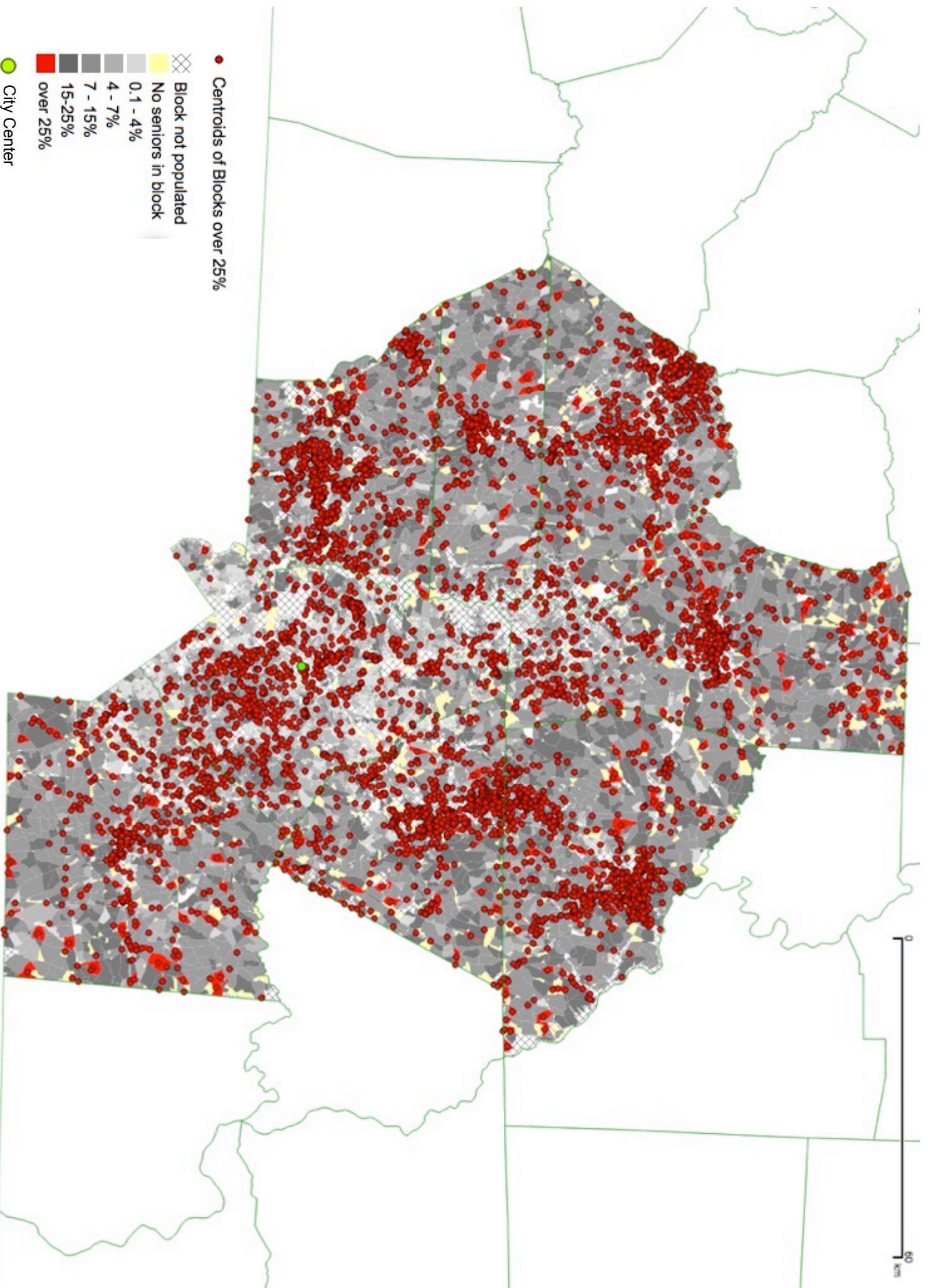
Charlotte, NC, 2010 Ring Buffers based on 2010 Census blocks: Proportion of Population over 75 of total population



Charlotte, NC, 2010 Proportion of Population over 65 and distance of Census block from downtown



Charlotte, NC and surrounding counties: Percent aged 75 and over 2010 Census Blocks



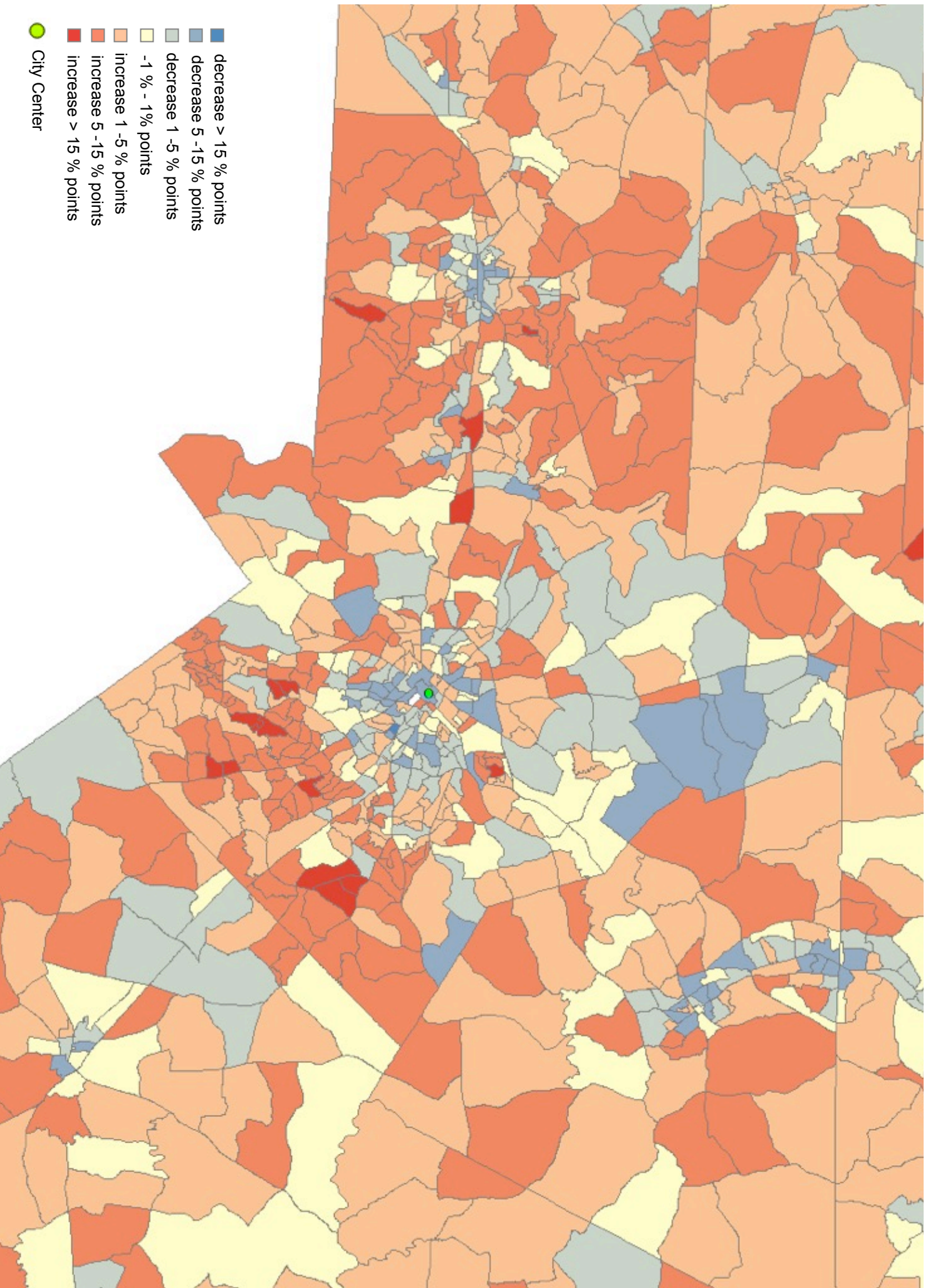
Charlotte, NC and surrounding counties: Percent Seniors (aged 65 and over) 2010 Census Blocks



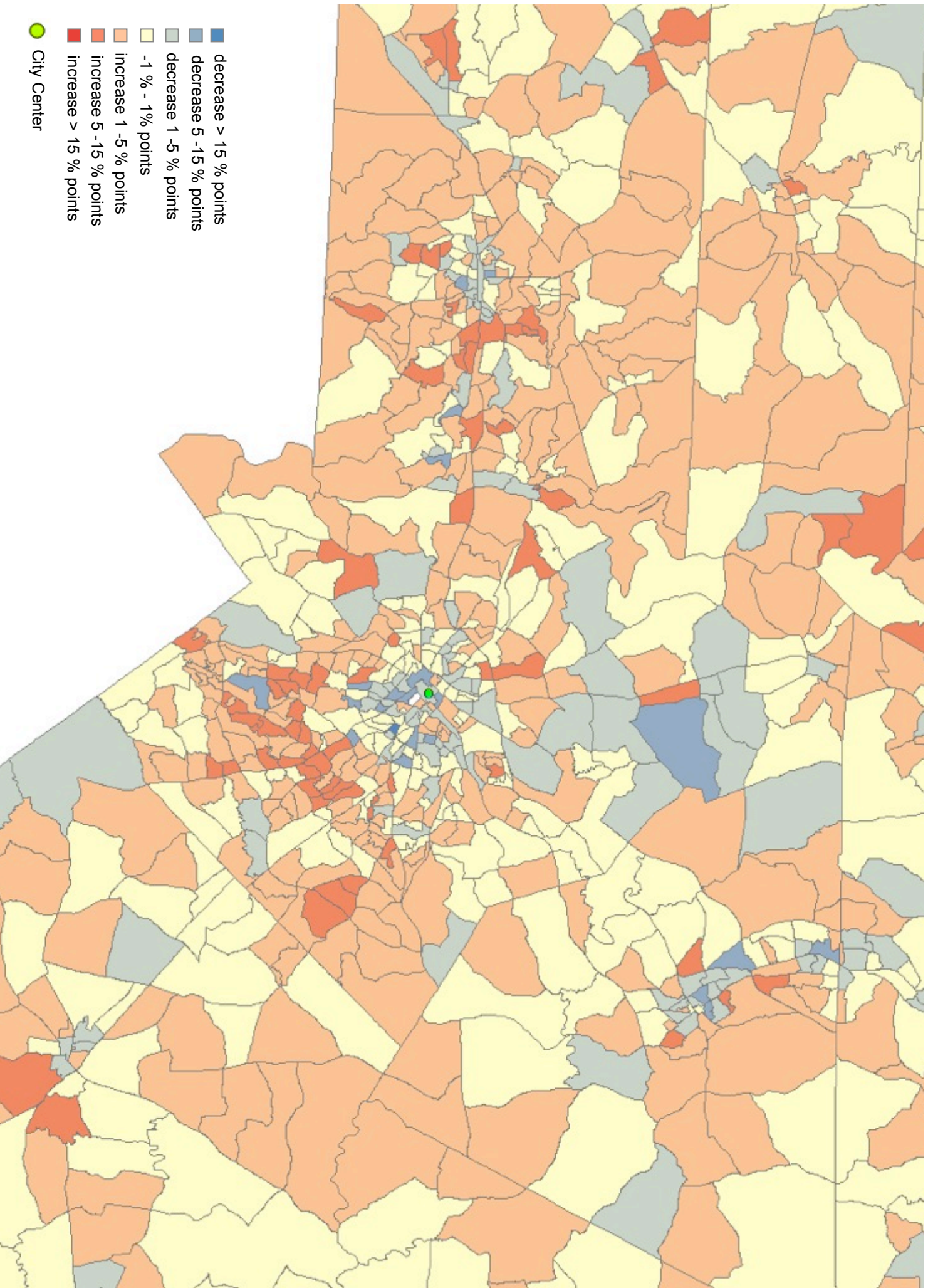
Charlotte, NC: Percent aged 75 and over 2010 Census Blocks



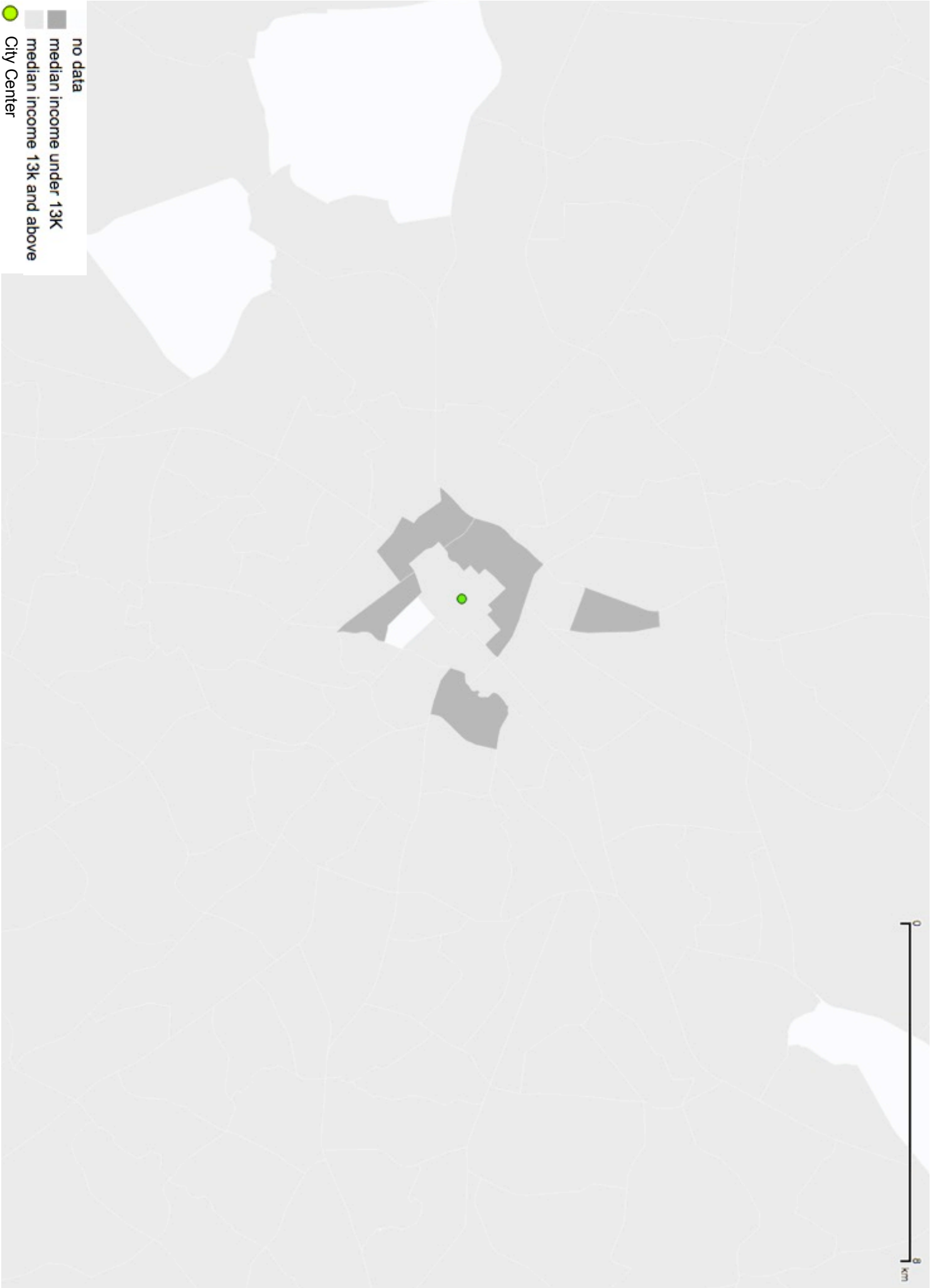
Charlotte, NC: Percent Seniors (aged 65 and over) 2010 Census Blocks



Charlotte, NC: increase (red) and decrease (blue) of pct. age 65 and over 1990-2015, 2010 Census Block Groups



Charlotte, NC: increase (red) and decrease (blue) of pct. age 75 and over 1990-2015, 2010 Census Block Groups

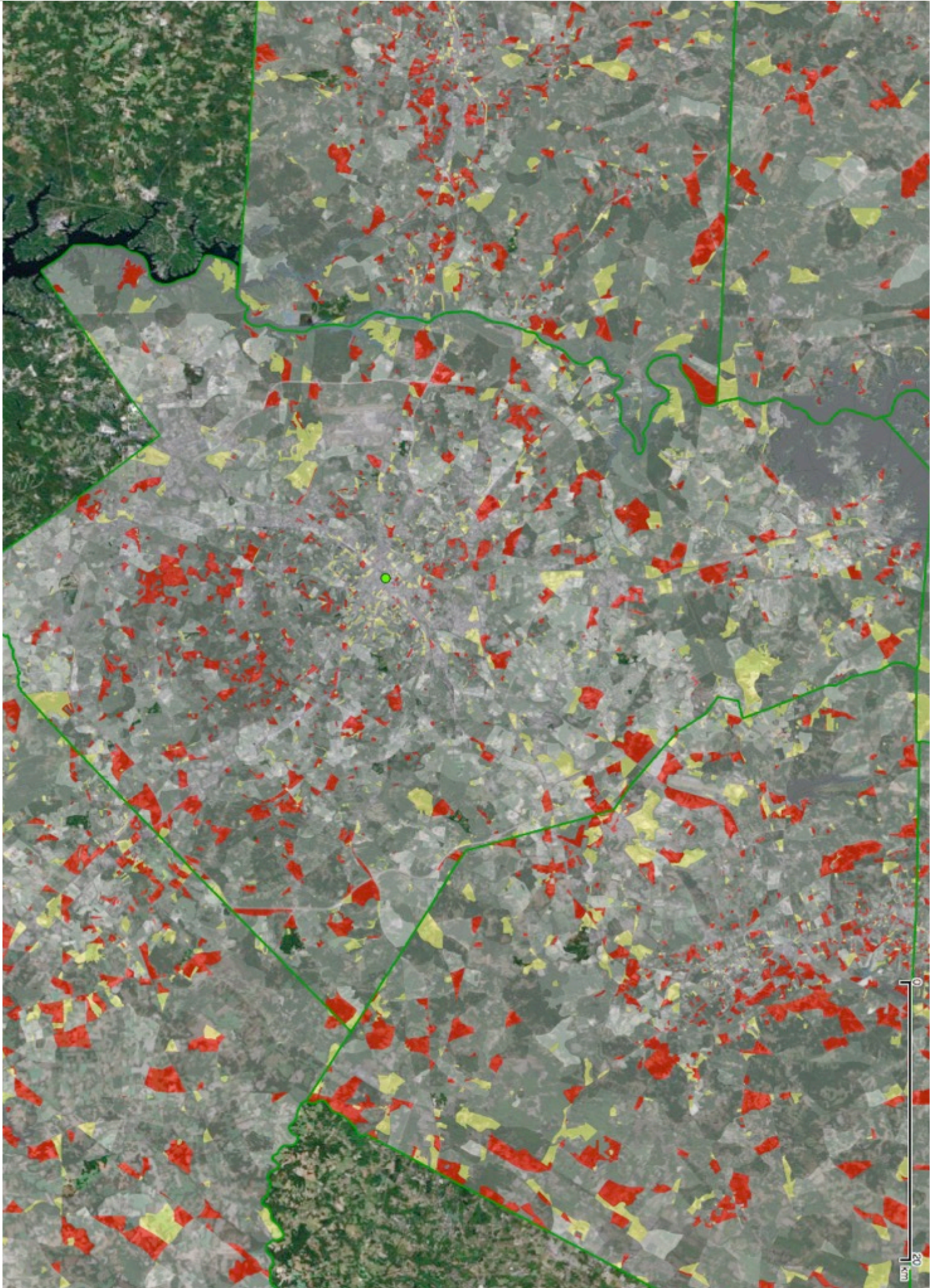


Charlotte, NC: Median income of Households with Householder 65 and older 2010 Census tracts - Data from ACS



Charlotte, NC: Median income of Households with Householder 65 and older 2010 Census tracts - Data from ACS

Charlotte, NC: Blocks with 25% and more Seniors (aged 65 and over) 2010 Census over Google Satellite



Charlotte, NC: Blocks with 25% and more Seniors (aged 65 and over) 2010 Census over Google Satellite



NORCs in Mecklenburg County, NC

Adjust the age and the ratio of seniors per block to define areas of Naturally Occurring Retirement Communities (NORCs)

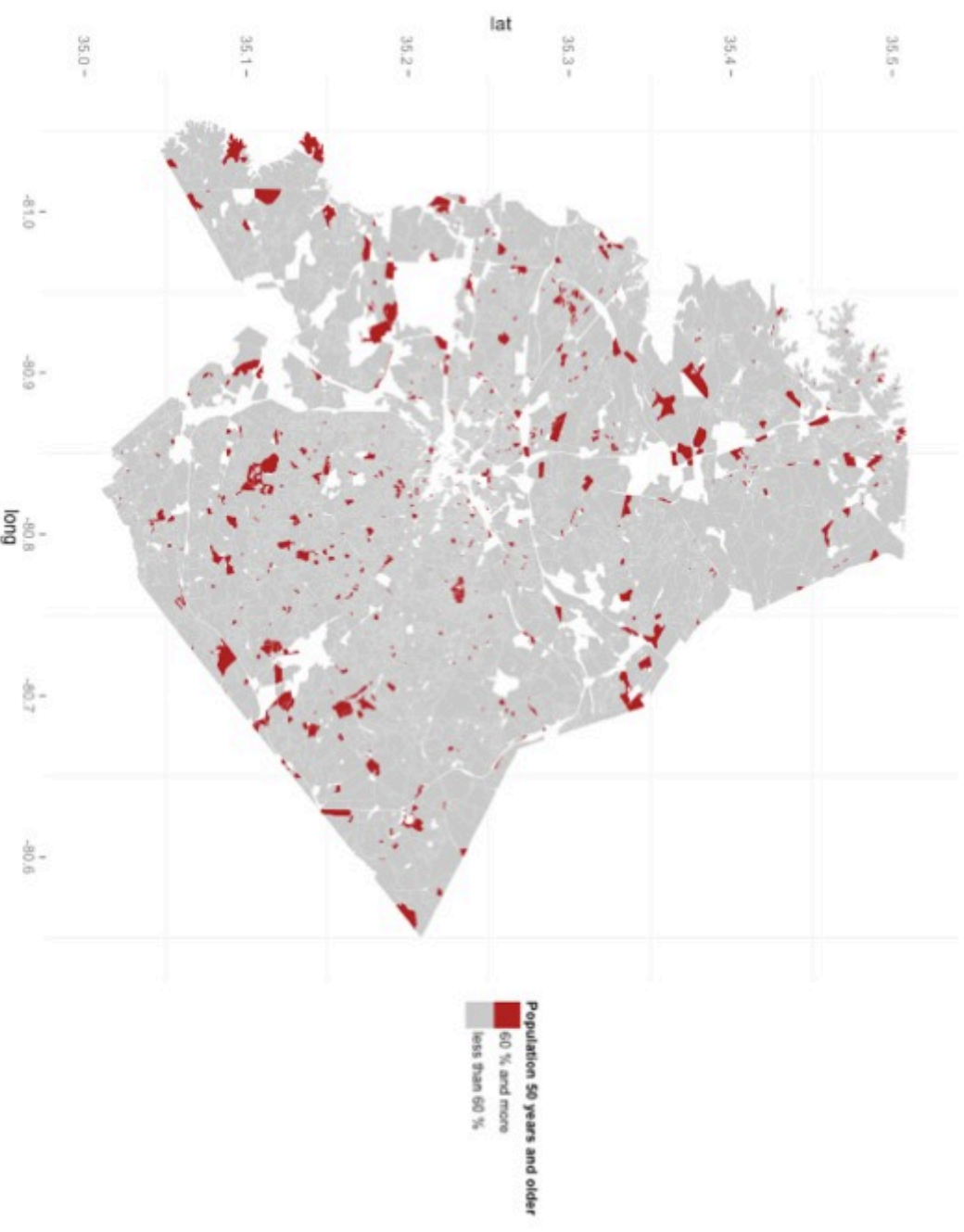
Age Bracket:

50 years and above

Ratio of seniors:



Block level data from 2010 US Census



NORCs in Mecklenburg County, NC

Adjust the age and the ratio of seniors per block to define areas of Naturally Occurring Retirement Communities (NORCs)

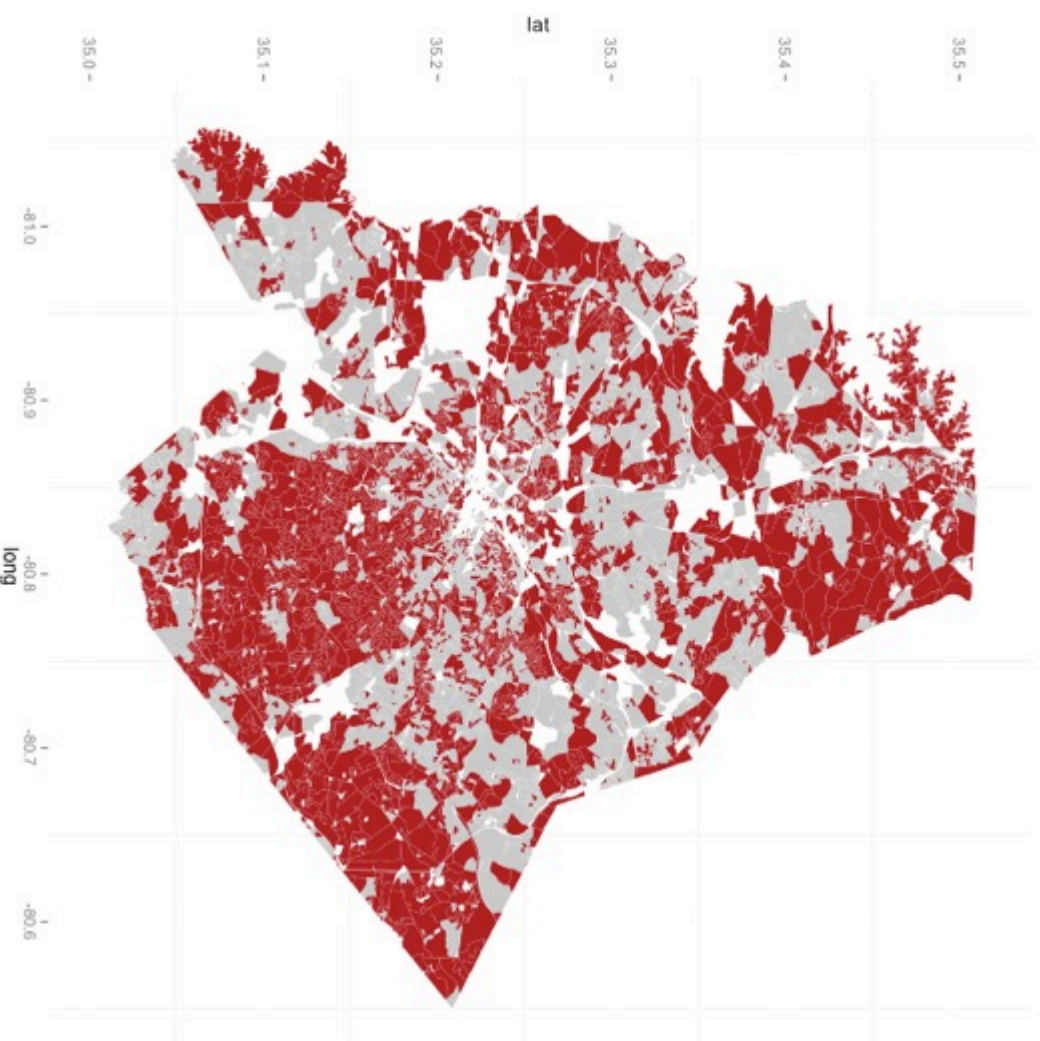
Age Bracket:

50 years and above

Ratio of seniors:



Block level data from 2010 US Census



Population 50 years and older
25 % and more
less than 25 %

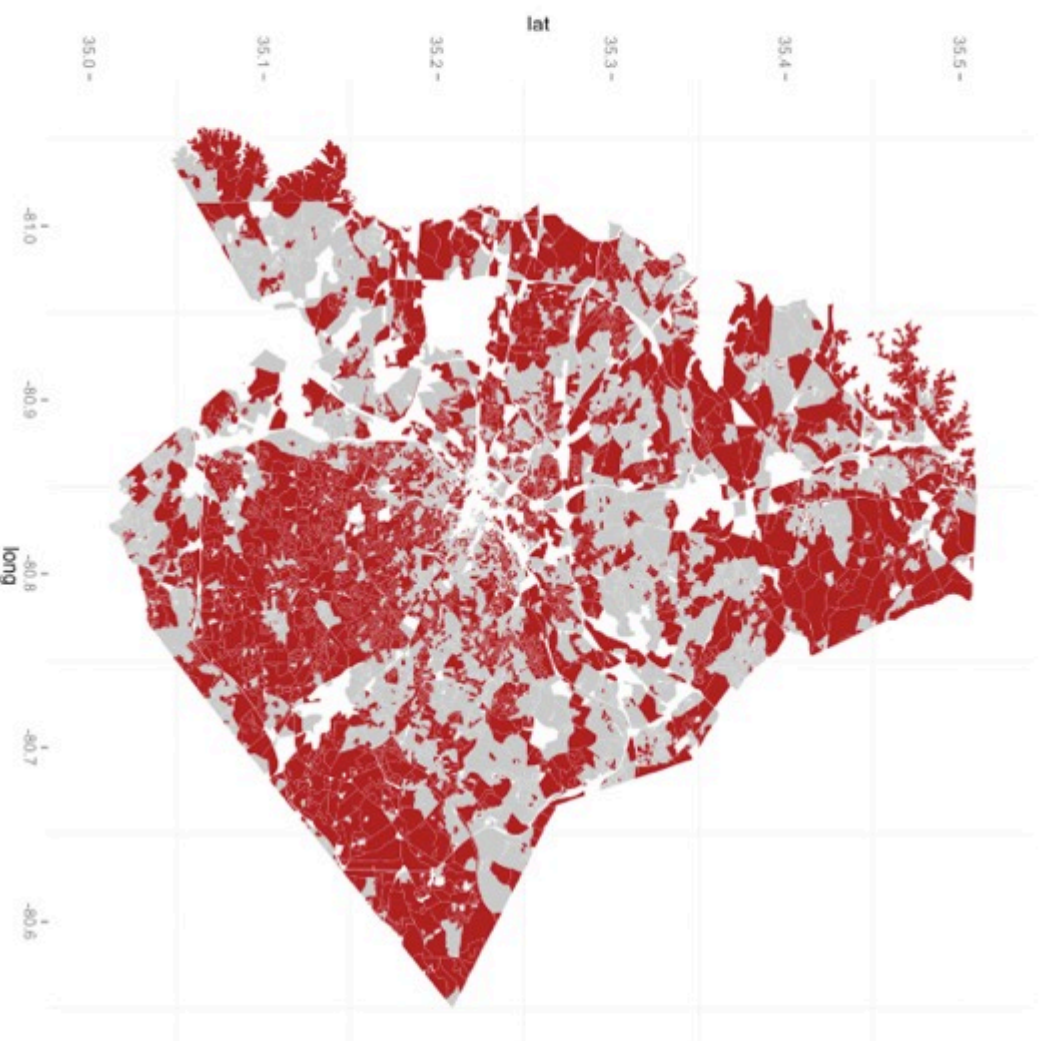
NORCs in Mecklenburg County, NC

Adjust the age and the ratio of seniors per block to define areas of Naturally Occurring Retirement Communities (NORCs)

Age Bracket:

- ✓ 50 years and above
- 55 years and above
- 60 years and above
- 65 years and above
- 70 years and above
- 75 years and above
- 80 years and above
- 85 years and above

Census



Population 50 years and older
25 % and more
less than 25 %

NORCs in Mecklenburg County, NC

Adjust the age and the ratio of seniors per block to define areas of Naturally Occurring Retirement Communities (NORCs)

Age Bracket:

70 years and above

Ratio of seniors:



Block level data from 2010 US Census

