

The background of the slide is a photograph of the Memorial Court at Stanford University. In the foreground, there are several bronze statues of figures in classical or religious attire. Behind them is a two-story building with a red-tiled roof and a series of stone arches supported by columns. A sign on the building reads "MEMORIAL COURT".

# Data Governance at Stanford

Matt Hoying

[hoying@stanford.edu](mailto:hoying@stanford.edu)

# Data Governance

DG is the formalizing of behavior around the definition, production and usage of data to manage risk and improve the quality and usability of the selected data.\*

*Non-Invasive Data Governance, Robert Seiner, TDAN*

\* As the quality and the usability enables more efficient and effective operational processes and strategic decisions

# Data Governance Components

## PEOPLE

Authority

Data Stewardship

Business Role

Collaboration

Accountability

Cultural Attitude

## POLICY

Policy Management

Communication

Issue Resolution

Decision Rights

Performance Mgmt

Info Flow Mgmt

## TECHNOLOGY

Data Policies and Rules

Process Orchestration

Compliance Monitoring

Modeling

Master Data

Data Quality Mgmt

From the Kalido DG Maturity Model



# Data Governance Plan

## PROJECT

HR Metrics  
Dashboard

Org Hierarchy

Research Data  
Quality

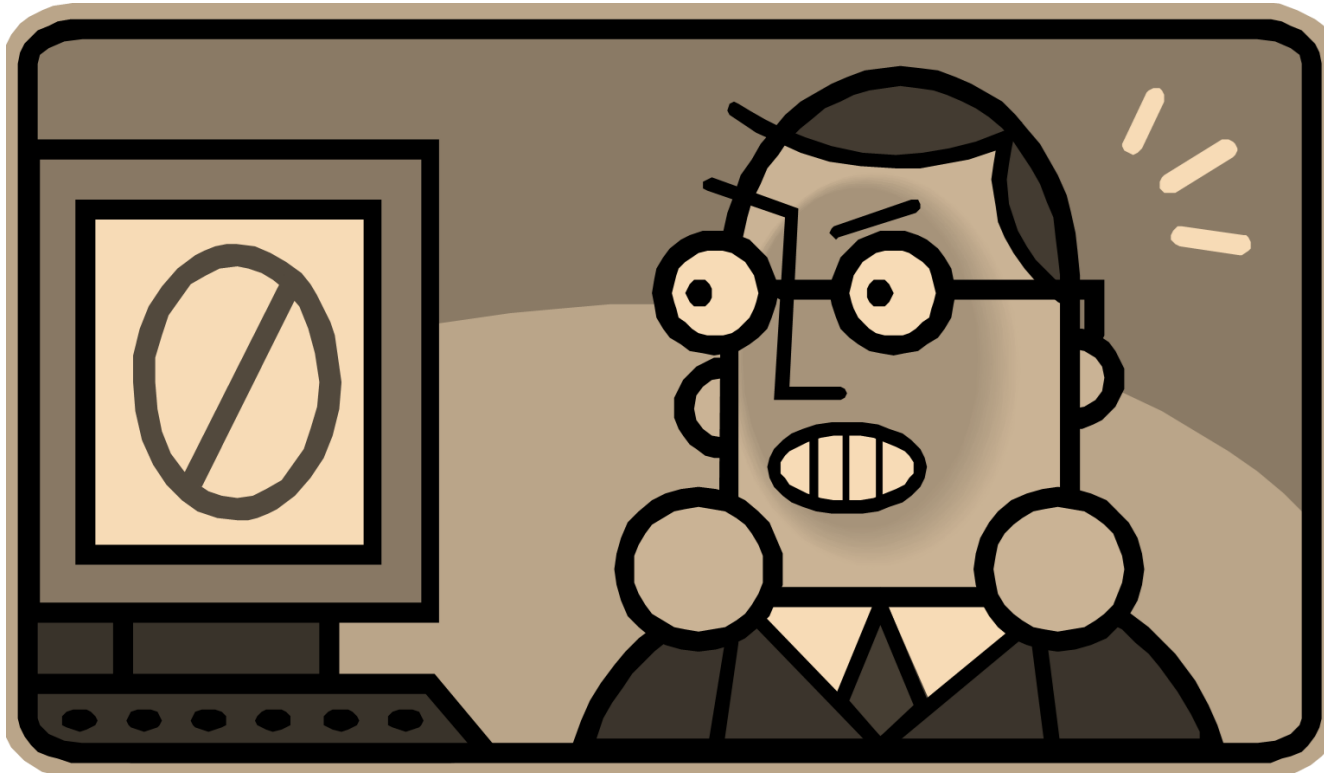
## FOUNDATION

Institutional Data  
Dictionary

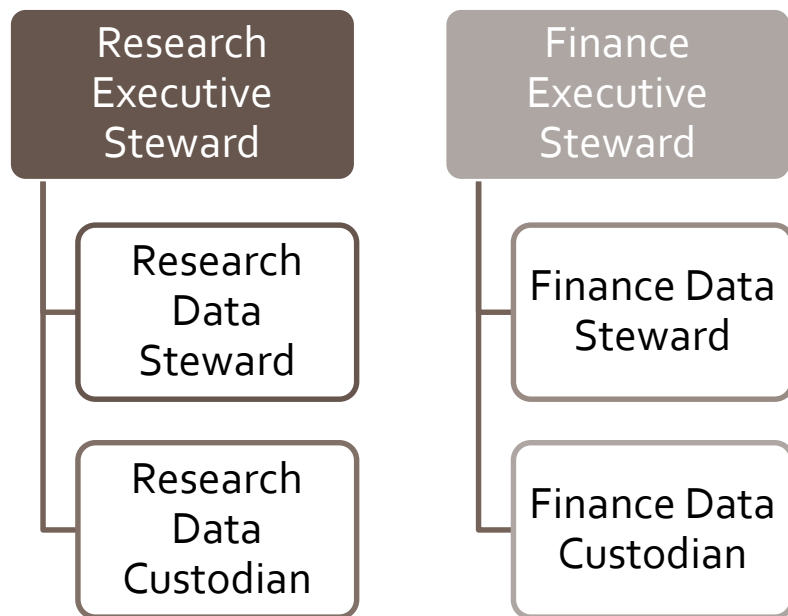
Institutional  
Information Flows

DG Processes and  
Procedures

# Data Opportunities at Stanford?

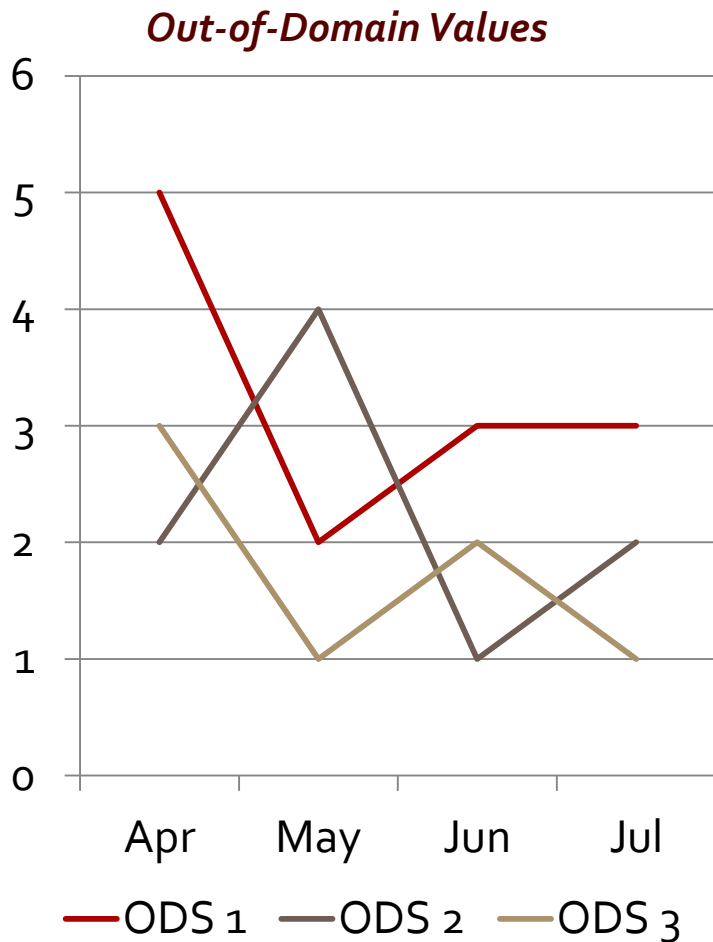


# Stewardship



- **Resolve institutional data definitions**
- **Resolve institutional code sets**
- **Develop data decision rights matrix**

# Data Quality



- **Develop data content and structure standards**
- **Develop quality thresholds**
- **Design and implement data-improvement workflows**

# Ongoing Foundation-Building

- Develop an institutional data dictionary
  - Build consistent understanding
- Document institutional data flows
  - Understand cross functional impacts
- Model data shared across the organization
  - Reconcile functional “versions of the truth”





# Contact Info

**Matthew Hoying**

Institutional Research and Decision Support

Main Quad, Building 60, Room 202

<http://dg.stanford.edu>

[hoying@stanford.edu](mailto:hoying@stanford.edu)

(650)-736-8192



This work is licensed under the Creative Commons Attribution 4.0 International License. To view a copy of this license, visit <http://creativecommons.org/licenses/by/4.0/>.

# Resources

- Data Governance Website
  - <http://dg.stanford.edu/>
- Data Governance Wiki
  - <https://asconfluence.stanford.edu/confluence/display/~mhoying/Home>
- This presentation
  - <http://dg.stanford.edu/wp-content/uploads/2011/11/DG-Pres001.pdf>
- The presentation supplement (newsletter)
  - <http://dg.stanford.edu/wp-content/uploads/2011/11/DG-News001.pdf>