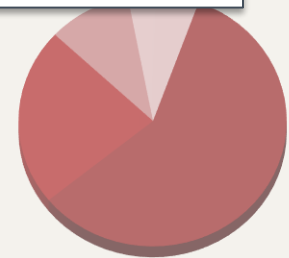
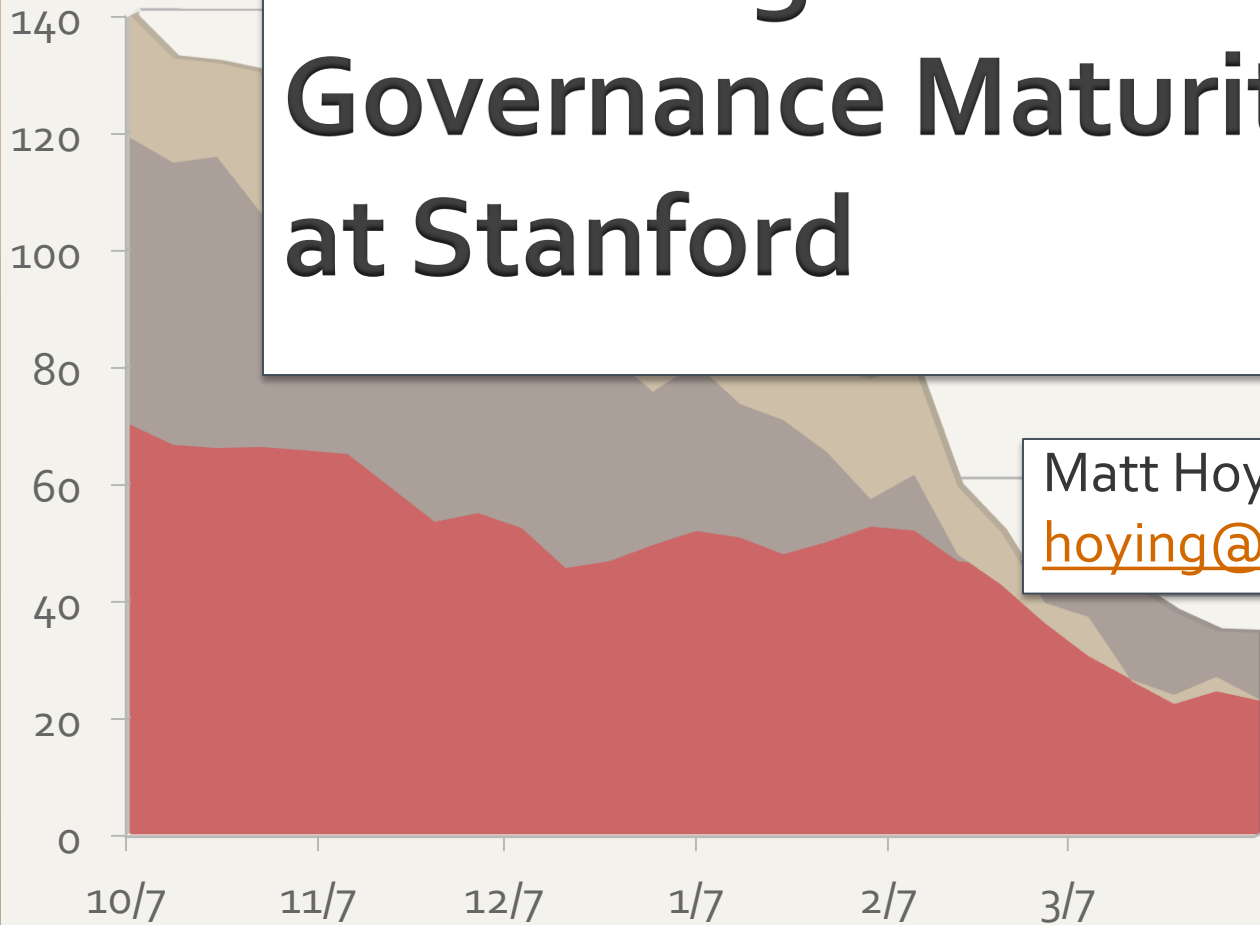


Measuring Data Governance Maturity at Stanford

0 DG
11
1000
00
110010
101
1011110
111000011
01100
011001010
111000
00110111
101101100011
01001011000110
11110 01 011
10
10
00
110
01010110
001101101000

Matt Hoying
hoying@stanford.edu



Data Governance

DG is the formalizing of behavior around the definition, production and usage of data to manage risk and improve the quality and usability of the selected data.*

Non-Invasive Data Governance, Robert Seiner, TDAN

* As the quality and the usability enables more efficient and effective operational processes and strategic decisions

Data Governance Components

PEOPLE

Authority

Data Stewardship

Business Role

Collaboration

Accountability

Cultural Attitude

POLICY

Policy Management

Communication

Issue Resolution

Decision Rights

Performance Mgmt

Info Flow Mgmt

TECHNOLOGY

Data Policies and Rules

Process Orchestration

Compliance Monitoring

Modeling

Master Data

Data Quality Mgmt

Data Governance Plan

PROJECT

HR Metrics
Dashboard

Org Hierarchy

Research Data
Quality

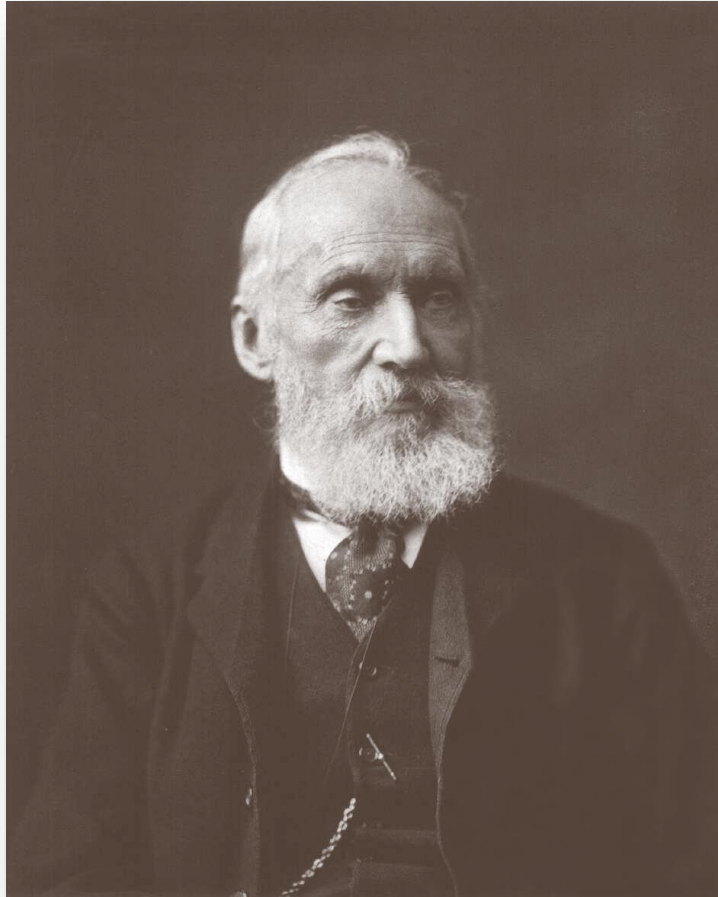
FOUNDATION

Institutional Data
Dictionary

Institutional
Information Flows

DG Processes and
Procedures

Why Build a Maturity Model



*If you cannot
measure it, you
cannot improve it.*
- Lord Kelvin (William
Thompson)

Stanford DG Maturity Scorecard

Foundational	People	Policies	Capabilities	Total
Awareness	3	2	1	2
Formalization	2	4	2	2.7
Metadata	1	1	2	1.7
Total	2	2.3	1.7	2

Project	People	Policies	Capabilities	Total
Stewardship	5	2	4	3.7
Data Quality	2	1	3	2
Master Data	3	2	2	2.3
Total	3.3	1.7	3	2.3

Qualitative and Quantitative Measures

Formalization — Policies

		Qualitative	Quantitative
Maturity Level	1	No formal data governance policies exist.	
	2	High-level data governance meta-policies are defined and distributed.	<ul style="list-style-type: none"> • # of meta-policies defined • # of meta-policies documented • # of meta-policies approved
	3	Data policies around the governance of specific data are defined and distributed as best practices.	<ul style="list-style-type: none"> • # of data policies identified • # of data policies documented • # of data policies approved
	4	Data policies become official Stanford data polices and compliance with approved data policies is audited.	<ul style="list-style-type: none"> • # of official data policies approved • # of data policies with audit process implemented
	5	Compliance with official Stanford data policies is actively enforced by a governing body.	<ul style="list-style-type: none"> • # of exceptions to official data policies • Average time to resolution of policy exceptions

Short-term DG Activities

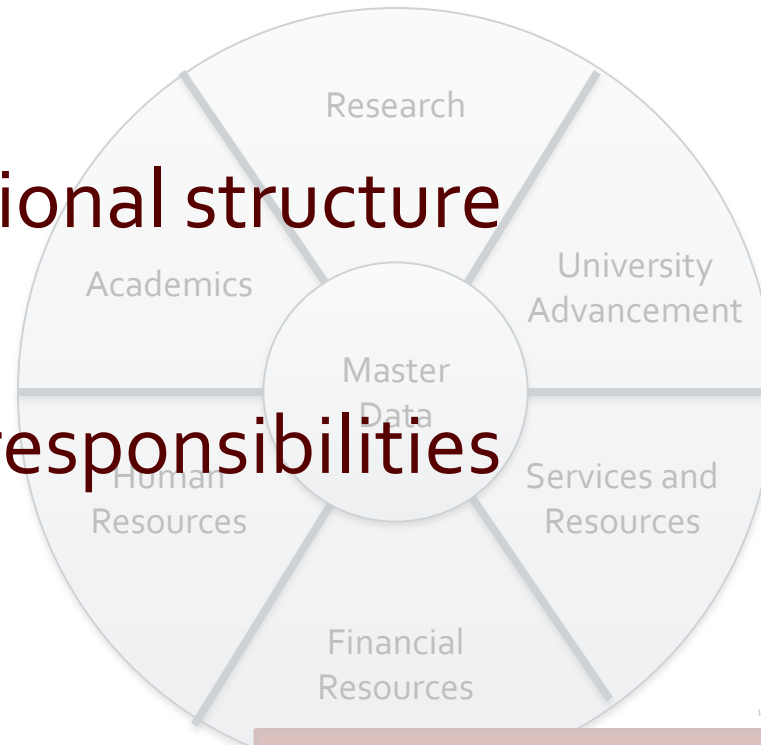
- Finalize DG maturity model and indicators
- Establish Stanford DG maturity baseline
- Develop metadata through HR Metrics project

Short-term DG Activities

- Develop institutional data subject areas
 - Map to major data entities

- Define DG organizational structure

- Define stewardship responsibilities



Univ Subject Areas - UW

Contact Info

Matthew Hoying

Institutional Research and Decision Support

Main Quad, Building 60, Room 202

<http://dg.stanford.edu/>

hoying@stanford.edu

(650)-736-8192



This work is licensed under the Creative Commons Attribution 4.0 International License. To view a copy of this license, visit <http://creativecommons.org/licenses/by/4.0/>.

Resources

- Data Governance Website
 - <http://dg.stanford.edu/>
- Data Governance Wiki
 - <https://asconfluence.stanford.edu/confluence/display/~mhoying/Home>
- This presentation
 - <http://dg.stanford.edu/?p=133>
- The presentation supplement (newsletter)
 - <http://dg.stanford.edu/?p=123>
- Old presentations and newsletters and the current version of the DG maturity model
 - <http://dg.stanford.edu/?tag=bicc>