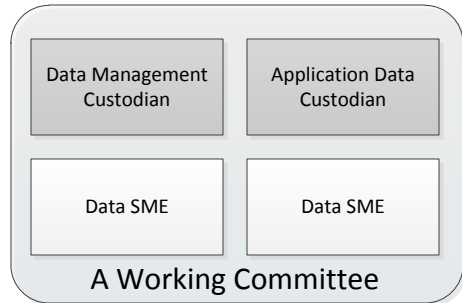
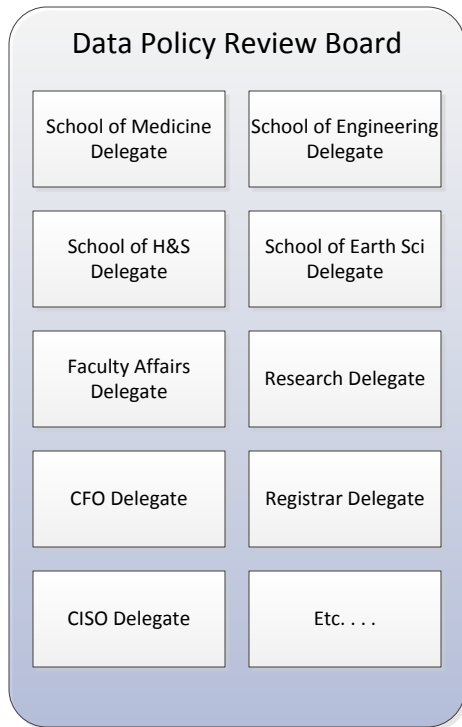
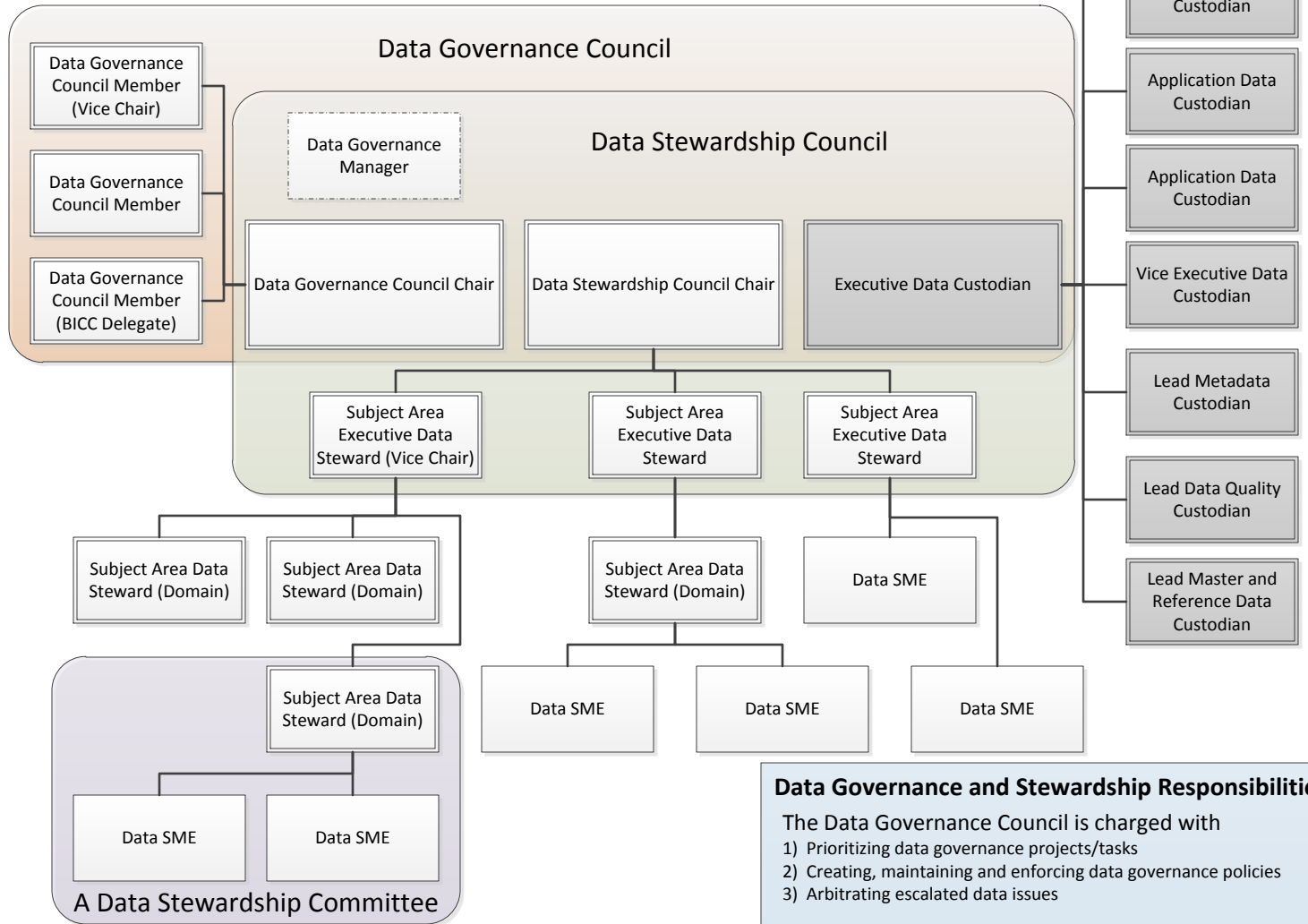


Stanford Data Governance Organization



Working Committees are:

- 1) Assembled to solve defined data quality issues
- 2) Have a clearly defined scope
- 3) Consist of Data SMEs, Application Data Custodians and Data Management Custodians (e.g. Reference Data, Metadata, Data Security, Data Quality)
- 4) Only exist for the length of the project
- 5) Propose solution as new project or business process modification



Subject Areas:

- 1) Each defined data subject area is headed by a Subject Area Executive Steward
- 2) Have as many or few sub-domains as the Executive Data Steward defines
- 3) Must cover all data in the scope of governed university data (as defined by the Data Policy Review Board)
- 4) Must have representation from all "significant" data stakeholder functions (as defined in RACI matrix)
- 5) Are business function independent

Data Governance and Stewardship Responsibilities

The Data Governance Council is charged with

- 1) Prioritizing data governance projects/tasks
- 2) Creating, maintaining and enforcing data governance policies
- 3) Arbitrating escalated data issues

The Data Stewardship Council is charged with

- 1) Coordinating Data Stewardship Committees
- 2) Provisioning data SMEs to projects
- 3) Mediating escalated data issues

The Data Stewardship Committees are charged with

- 1) Creating, maintaining and approving business metadata
- 2) Assessing and monitoring data quality in domains
- 3) Identifying and resolving data meaning and usage issues
- 4) Populating and maintaining the RACI Matrix for data domains

The Data Policy Review Board is charged with

- 1) Providing final approval on data governance policies
- 2) Providing final approval on the scope of governed university data