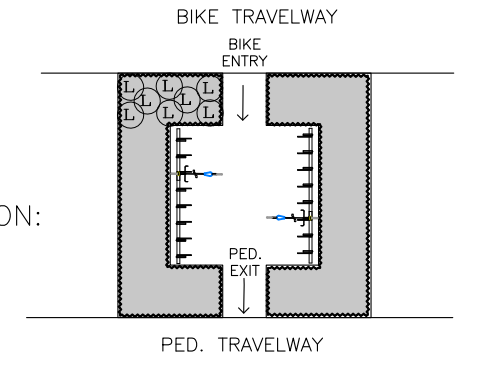
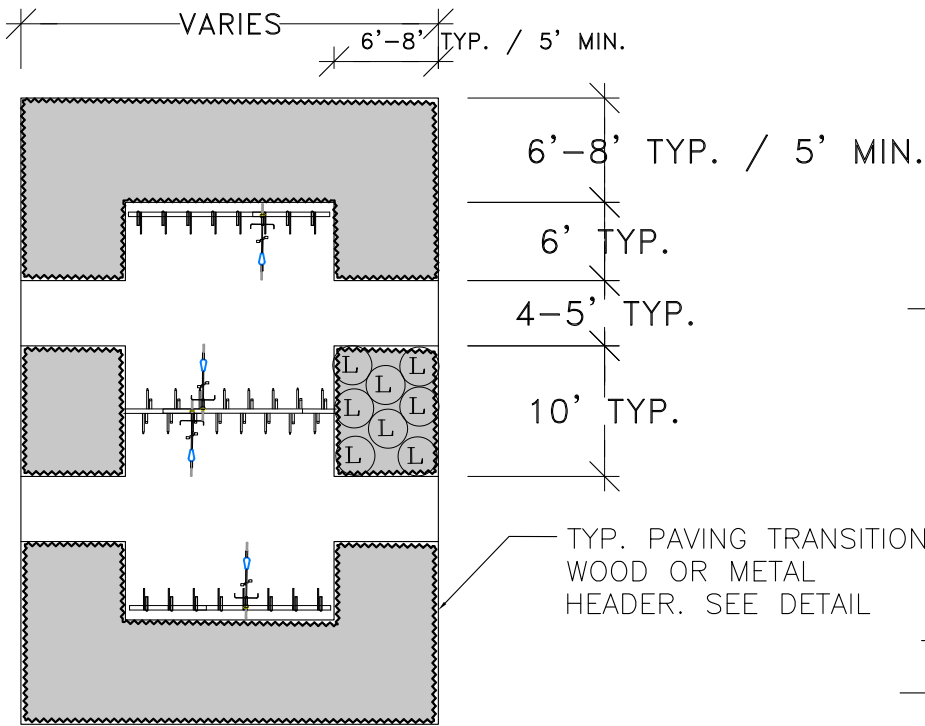
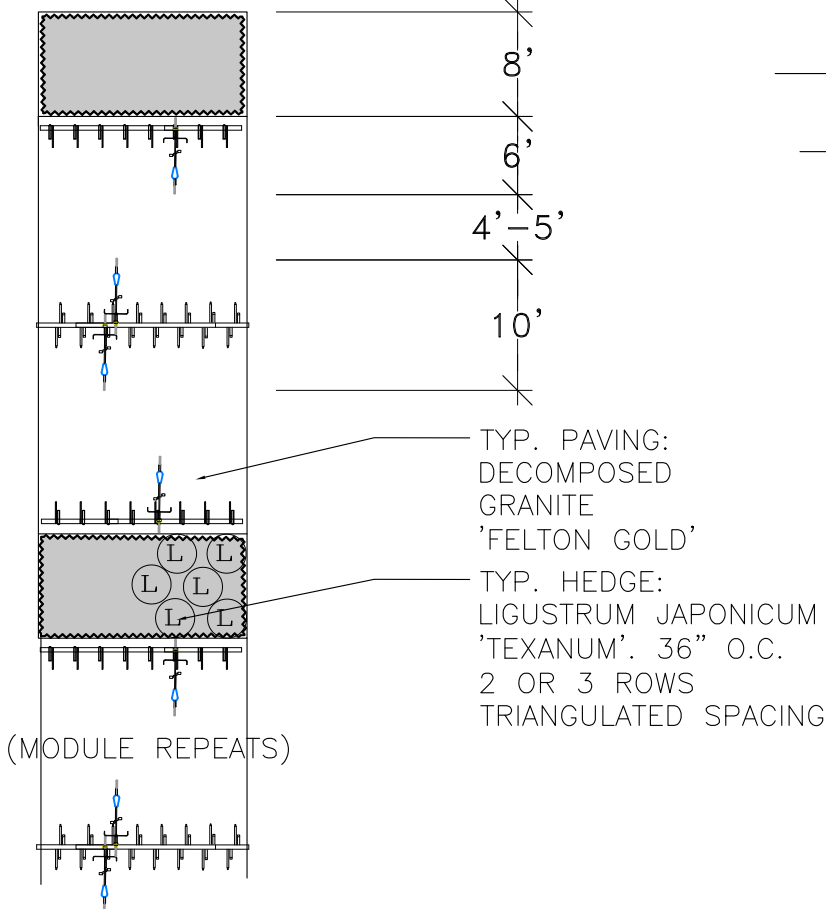


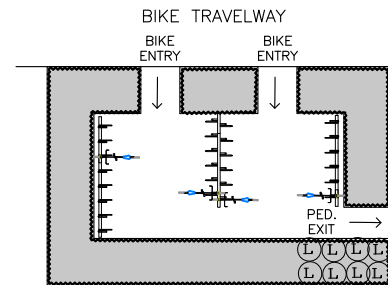
TYP. LAYOUT FOR SMALL AREAS



ALT. LAYOUT FOR LARGE AREAS



TYPICAL CIRCULATION CONCEPTS



TYPICAL BIKE PARKING CONCEPTS

Stanford University Architect/Planning Office
Standard Campus Site Furnishings Guidelines

Scale: NTS

Updated: 08/18/10

Superseded: N/A

Bicycle Rack 1

Lightning Bolt Rack

The Lightning Bolt series bicycle rack is the most commonly seen rack on campus, one of only two campus standard rack styles. The favorite of bikers, it was chosen as a standard for its security and ease of use. A choice of configurations and lengths is available in the “LR” series to respond to physical constraints of spaces: single row configuration, perpendicular to rack base, double row perpendicular, or, for very tight spaces, single row diagonal. The Stanford University Architect/Planning Office sites new racks, and works with the Transportation Department to replace nonstandard racks and relocate existing racks when needs change. Although many other rack styles are seen on campus, an ongoing goal is to replace all nonstandard with standard racks.

Specifications:

- Extra Heavy .188 wall square steel tubing with .75” solid bar loops, thermoplastic polyester powder coat, matte black.
- Single-sided perpendicular racks require six feet of space for bikes and approximately four feet for aisles, a total of ten feet.
- Double-sided perpendicular racks require approximately ten feet of space for two rows of bikes and approximately four feet on each side for aisles, a total of eighteen feet.

Manufacturer/Model:

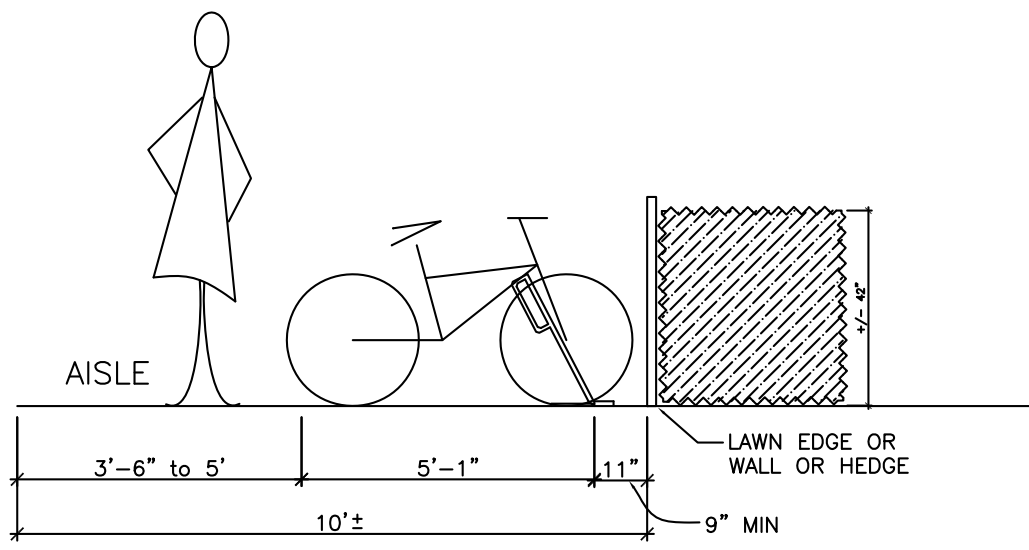
Creative Pipe, Inc. Contact: Mark Pappas, P.O. BOX 2458 Rancho Mirage, CA 92270 (760) 340-5555, Model LR-P (single side perpendicular) and LR-XP (double side perpendicular).



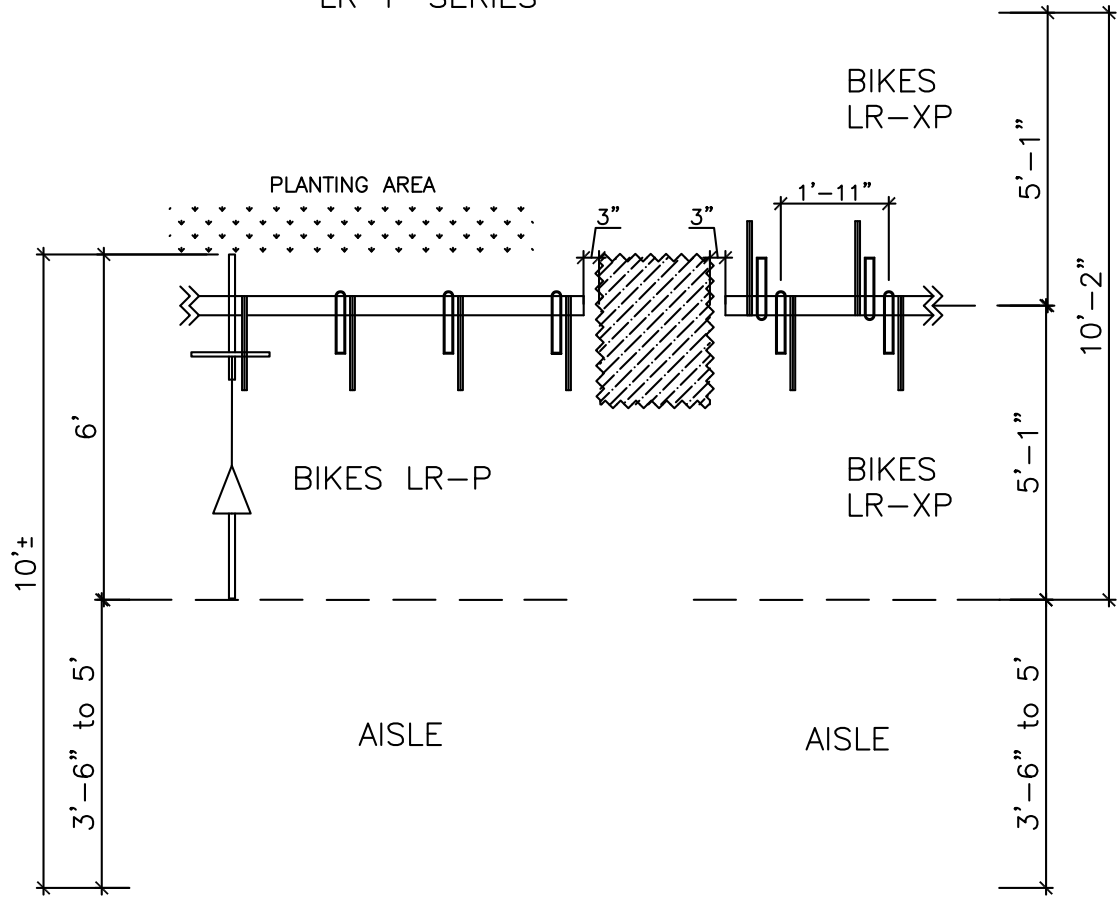
LR-XP



LR-P



ELEVATION
LR-P SERIES



PLAN
LR-P AND LR-XP SERIES

CPD_PLANNING\2 CAMPUS STANDARDS\STANDARD SPECS\SITE FURNISHINGS CAD DETAILS\SITE FURNISHINGS\CURRENT SPECS\BIKE RACK.DWG

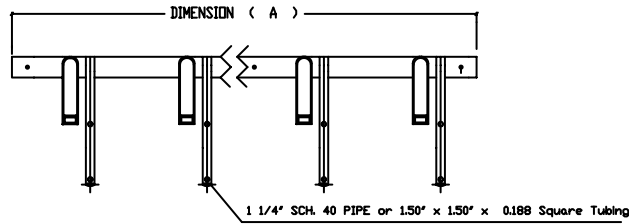


BIKE RACK DIMENSIONS & PLACEMENT

Scale: 1:40

Stanford University Architect/Planning Office
Standard Campus Site Furnishings Guidelines

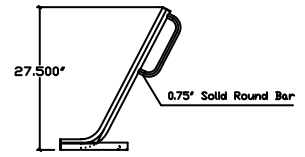
Updated: 6/09/2010
Superseded: 6/18/2004



TOP VIEW

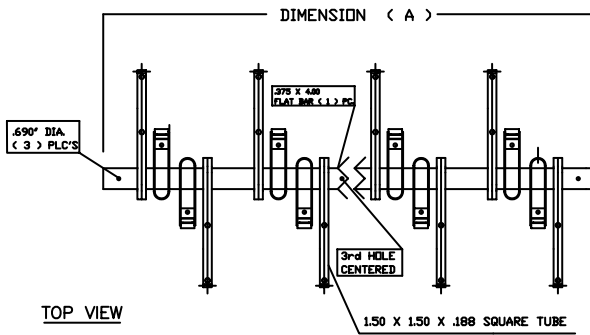
MODEL #	DIM. (A)
LR - P - 2	44.50"
LR - P - 3	67.00"
LR - P - 4	89.50"
LR - P - 5	112.00"

DASH NUMBER IS THE NUMBER OF BIKES PER RACK



END VIEW

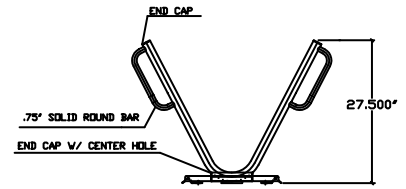
LR-P-SERIES WITHOUT COUPLER



TOP VIEW

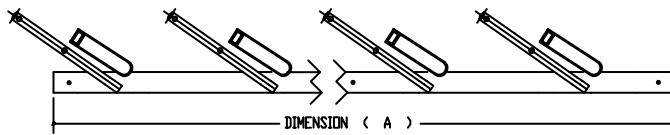
MODEL #	DIM. (A)
LR - XP - 2	27.00
LR - XP - 4	49.50
LR - XP - 6	72.00
LR - XP - 8	94.50

DASH NUMBER IS THE NUMBER OF BIKES PER RACK



END VIEW

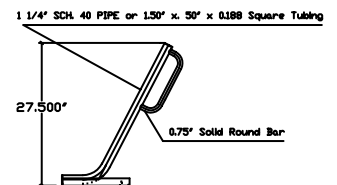
LR-XP-DOUBLE SERIES WITHOUT COUPLER



TOP VIEW

MODEL #	DIM. (A)
LR - D - 2	59.50"
LR - D - 3	89.50"
LR - D - 4	119.50"

DASH NUMBER IS THE NUMBER OF BIKES PER RACK



END VIEW

LR-D-SERIES WITHOUT COUPLER

MOUNTING OPTION: Surface Mount
 FINISH OPTIONS:
 Standard: PFS Thermoplastic Coat (")

NOTE: ALL DIMENSIONS + / - .250"
 SQUARE TUBING IS RECOMMENDED.
 DO NOT REPRODUCE WITHOUT WRITTEN PERMISSION OF CREATIVE PIPE INC., OR THE PATENT WORDING.

C:\PLAN-SERV\CAD_PLANNING\2CAMPUSSTANDARDS\SITEFURNISHINGS\CURRENTSPECS\BIKERACK_LR SERIES.DWG



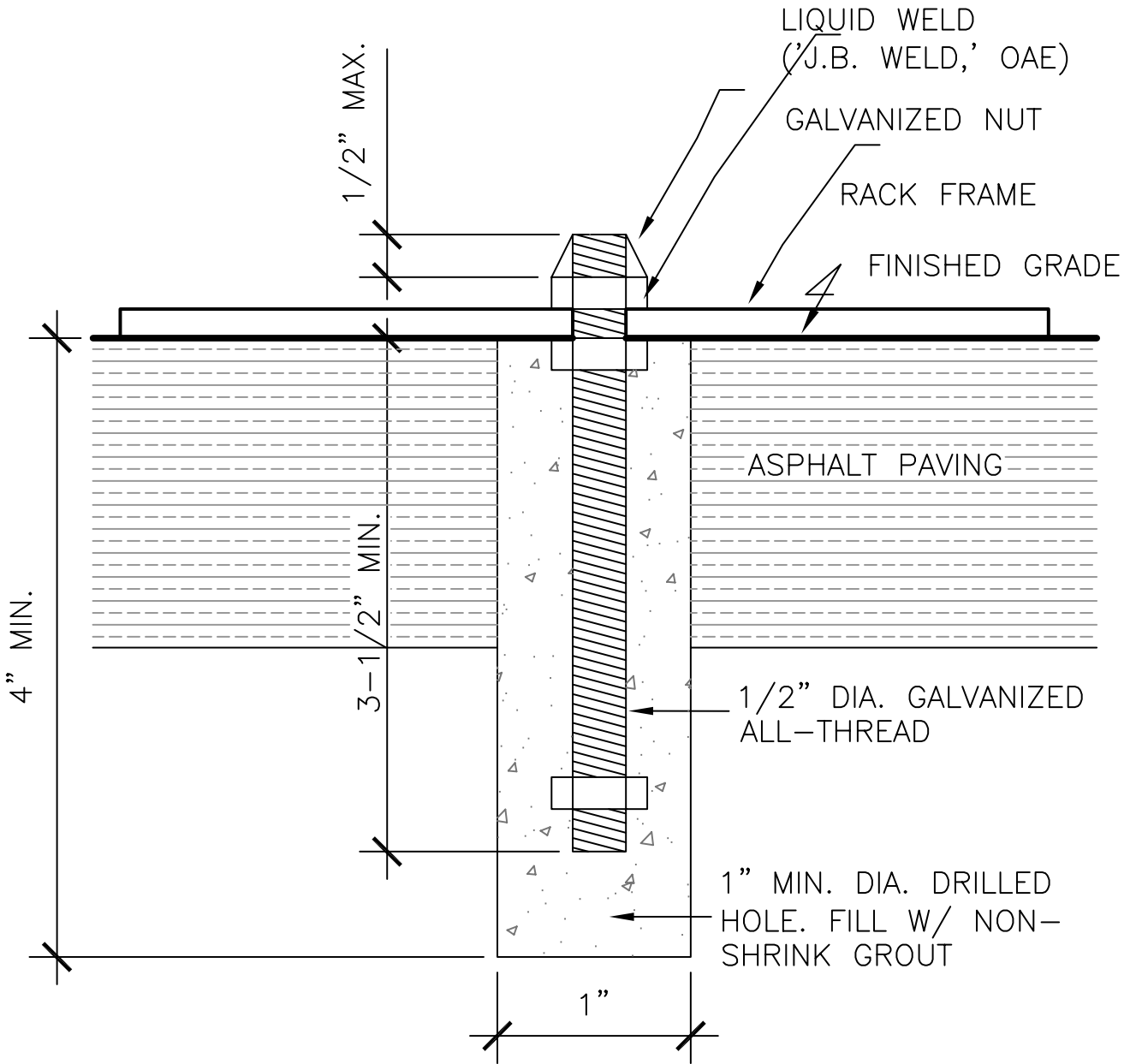
LR SERIES BIKE RACK DETAILS

Stanford University Architect/Planning Office
 Standard Campus Site Furnishings Guidelines

Scale: not to scale

Updated: 06/24/2003

Superseded: 7/25/2001



NOTE:

1. FINGER TIGHTEN NUT FIRST DAY, THEN TIGHTEN FULLY NEXT DAY.
2. ONE ANCHOR IN EACH HOLE.

C:\PLAN-SERV\CAD_PLANNING\2CAMPUSSTANDARDS\SITEFURNISHINGS\CURRENTSPECS\BIKERACK_ASPHALT.DWG



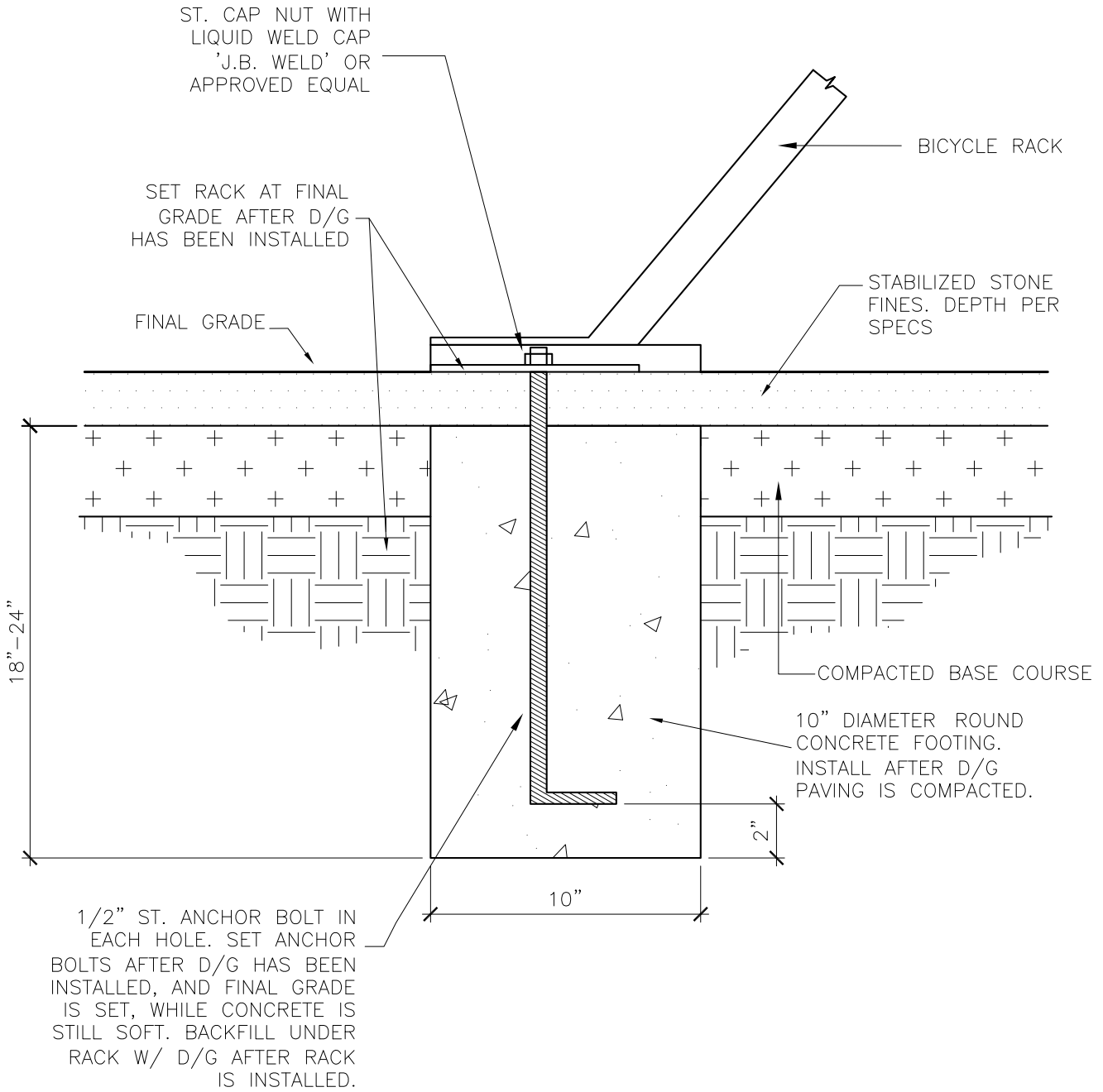
BIKE RACK ANCHOR IN ASPHALT

Scale: not to scale

Stanford University Architect/Planning Office
Standard Campus Site Furnishings Guidelines

Updated: 10/16/2002

Superseded: 10/16/2002



C:\PLAN-SERV\CAD_PLANNING\2CAMPUSSTANDARDS\SITEFURNISHINGS\CURRENTSPECS\BIKERACK_MOUNTING.DWG



BIKE RACK MOUNTING IN STONE FINES

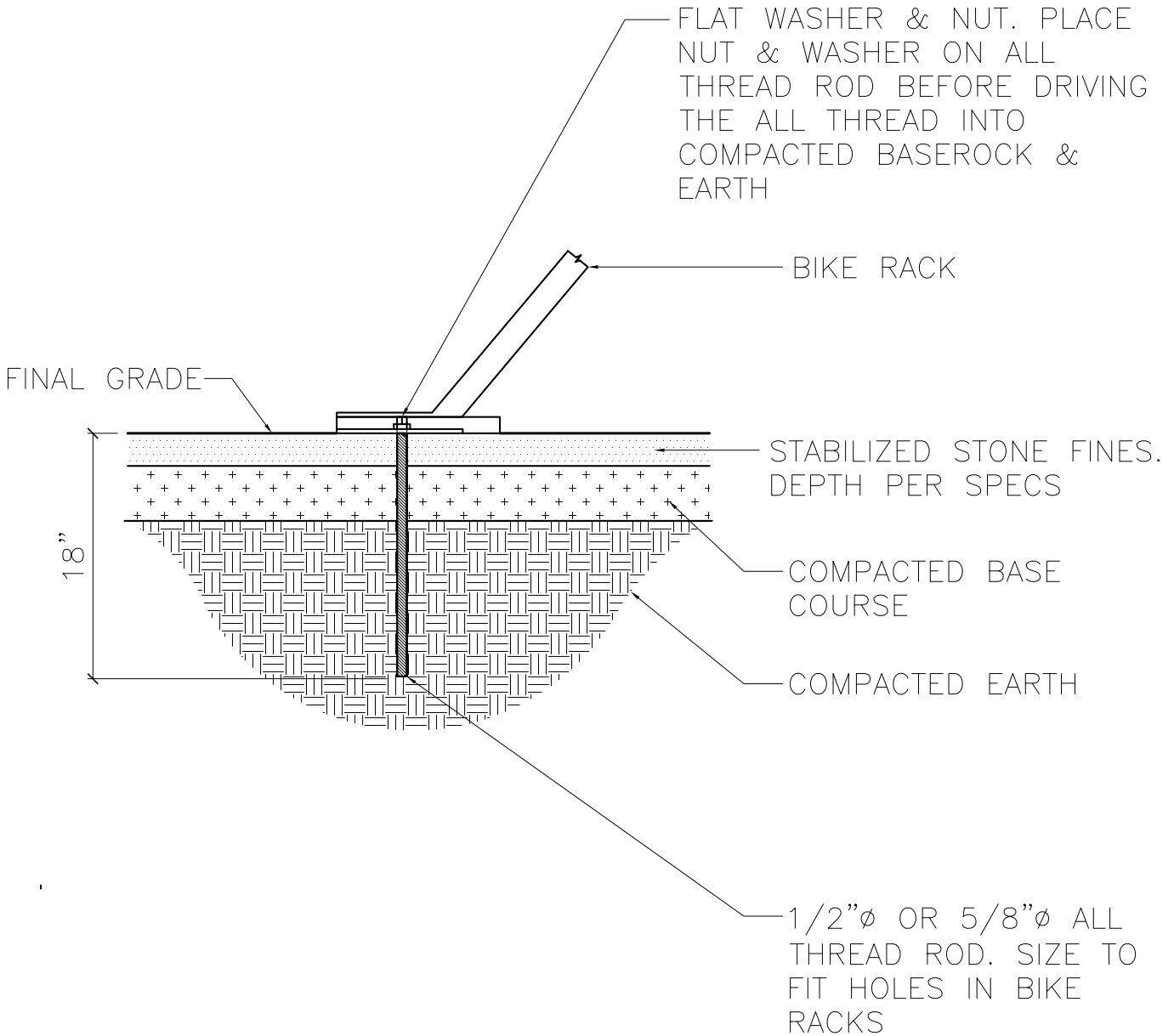
Scale: not to scale

Stanford University Architect/Planning Office
Standard Campus Site Furnishings Guidelines

Updated: 04/13/2009

Superseded: 11/02/2002

NOTE: SET RACK AT FINAL GRADE AFTER D/G HAS BEEN INSTALLED



TEMPORARY BIKE RACK MOUNTING IN STONE FINES

Stanford University Architect/Planning Office
Standard Campus Site Furnishings Guidelines

Scale: 1"=1'

Updated: 03/03/09

Superseded: 11/02/2002

Bicycle Locker

Bike-to-work Locker, metal

Stanford University is committed to promoting commuting by bicycle. Bike locker compounds shall be located regionally by the UA/CPD office to provide secure, covered parking for Commute Club members who apply for them. The restriction on eligibility is due to the many competing needs for Stanford lands. Parking & Transportation Services manages locker tenants, requests and waiting lists. The SU standard bike locker is rectangular black metal remaining consistent with other standard bicycle site furnishings. Orthogonal layouts and drought tolerant screening shrubs are to be employed in the design of bike locker compounds. For installation information, see detail drawing entitled “Bike Locker Standard Installation”. The Palmer Group is an approved vendor but equal products may be used pending submittal & approval by UA/CPD.

Specifications:

- Solid door of 12 gauge sheet metal. 16 gauge sheet metal walls, top and door frames.
- Pop-out T-handle locking mechanism.
- Powder coat, matte black.
- Single-sided dimensions: 76”x30”x47”. Double sided dimensions: 76”x39”x47”.
- 48” minimum aisle width.

Manufacturer/Model:

Palmer Group Bike to Work Locker, metal. 1072 Folsom Street #328, San Francisco, CA 94103 (415)333-6428 or (888)764-2563. Model# BTWL01 (single sided) or BTWL02M (double sided).



Regional Locker Compound at Memorial Way (immature landscape).



BIKE LOCKER STANDARD INSTALLATION

Not to Scale

