

**Permit 10478
Time Extension Project**

Final Environmental Impact Report

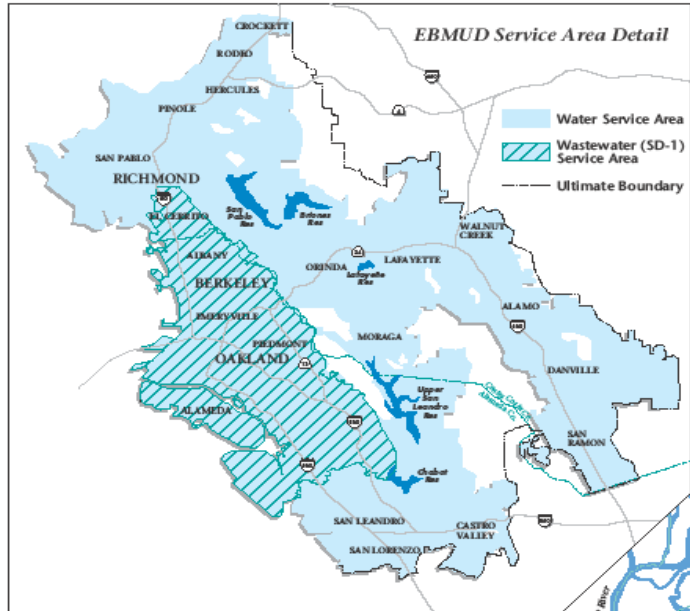
September 23, 2014

Presentation Outline



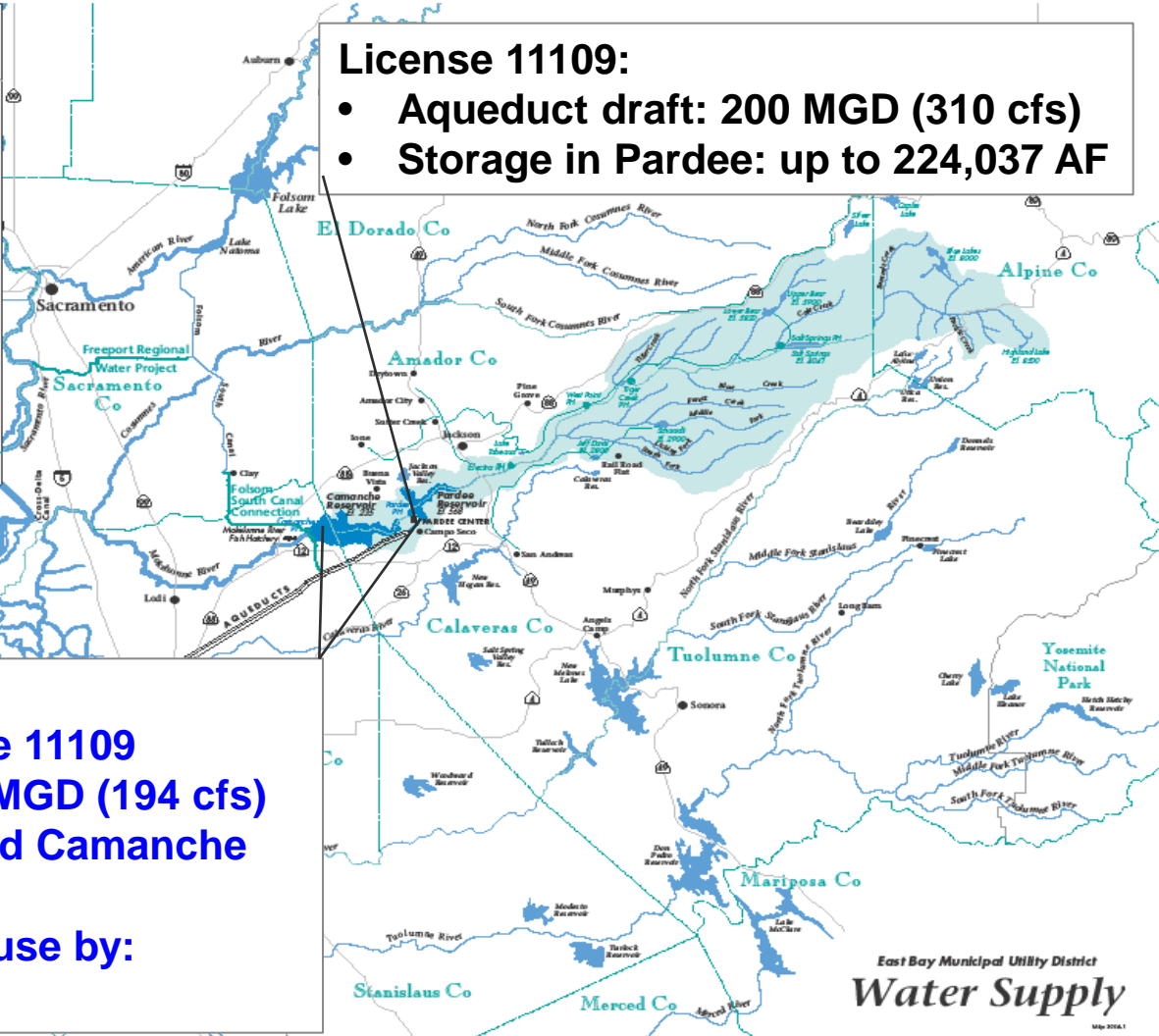
- **Background**
 - Water Supply System
 - Water Rights
 - Water Supply Operations
- **Proposed Project**
- **Environmental Review Process**
- **Public Input**
- **Next Steps**

Water Supply System



License 11109:

- Aqueduct draft: 200 MGD (310 cfs)
- Storage in Pardee: up to 224,037 AF



Permit 10478:

- Supplements License 11109
- Aqueduct draft: 125 MGD (194 cfs)
- Storage in Pardee and Camanche up to 353,000 AF
- Complete beneficial use by: 12/1/2000

Water Supply Operation



Pardee and Camanche Reservoirs are operated in an integrated manner to meet a myriad of obligations:

- Water supply
- Flood Control
- Streamflow Regulation
- Fishery Requirements
- Obligations to Downstream Diverters
- Recreation
- Hydropower Generation



Proposed Project

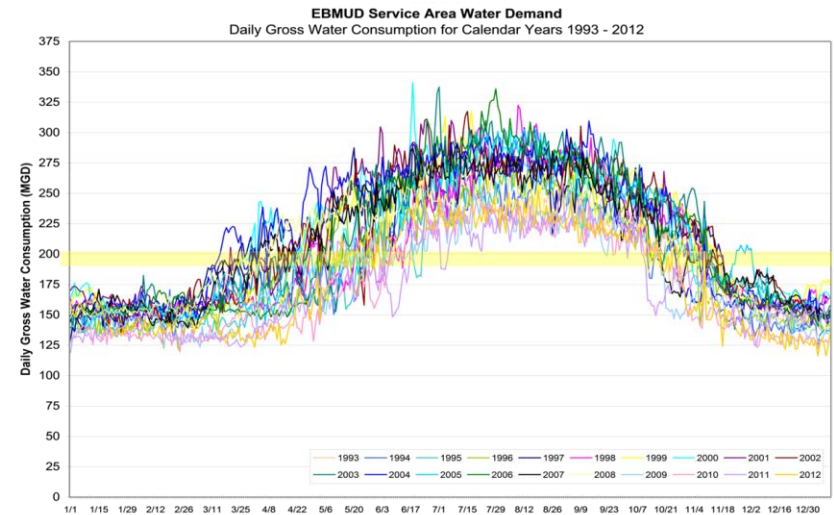


- **Extend existing Permit 10478 to the year 2040 to allow EBMUD additional time to apply the water to beneficial use**
 - 40-year time frame based on planning horizon of the 2040 Water Demand Study and land-use plans
 - No new water rights authorizations
 - No new construction
 - No change in operations

Project Objectives and Need



- The fundamental objective:
 - Continue to reliably meet water demands in the most cost-effective and environmentally responsible manner through the year 2040
- Basic objectives:
 - Meet overall demand for water:
 - Peak demands and future projected increases in demand
 - demands following prolonged droughts or catastrophic events
 - Protect ecosystem and anadromous fish
 - Satisfy senior rights downstream; and
 - Use existing water rights and infrastructure



Public Outreach



- **Notice of Preparation: November 7, 2008**
 - 3 scoping meetings in Oakland, Lodi and Sutter Creek
 - Newspaper notices

- **Draft EIR: September 30, 2013**
 - Over 100 mailed, including 5 public libraries

- **Comment period: October 3, 2013 – Jan. 10, 2014**
 - 4 public meetings in Oakland, Lodi, Jackson, San Andreas
 - 11 Newspaper notices, filings with County Clerks
 - EBMUD Website

- **Received Seven Comment Letters**

Final Environmental Impact Report



- **FEIR published September 12, 2014**
- **Addresses all comments received on DEIR**
- **Includes four master responses and individual responses**
 - **Project Description and Maximum Use Analysis**
 - **Baseline**
 - **Alternatives Analysis**
 - **Water Rights**
- **Findings**
 - **No significant and irreversible impact**
 - **Two potentially significant impacts to Fish and Agricultural resources**
 - **Potentially significant impacts reduced to less than significant with mitigation.**

Recommended Action



- **Certify the Final Environmental Impact Report for the Permit 10478 Time Extension Project**
- **Make Findings in accordance with CEQA**
- **Adopt the Mitigation Monitoring & Reporting Plan in accordance with CEQA**
- **Approve the Permit 10478 Time Extension Project**

Next Steps



- **Upon certification, file Notice of Determination with County Clerks.**
- **Filing initiates the 30-day limitations period for litigation**
- **State Water Board, as the responsible agency, is expected to consider the project and rely on the EIR**

WaterSmart Gardener Program Update

**Board of Directors
September 23, 2014**

Water Conservation Master Plan Implementation Strategies



Water
Management

The logo for EBMUD Water Smart Business, featuring the EBMUD logo, the words 'water SMART' in a stylized font, and 'BUSINESS' below it.

Education &
Outreach

Conservation
Incentives



Regulation &
Legislation

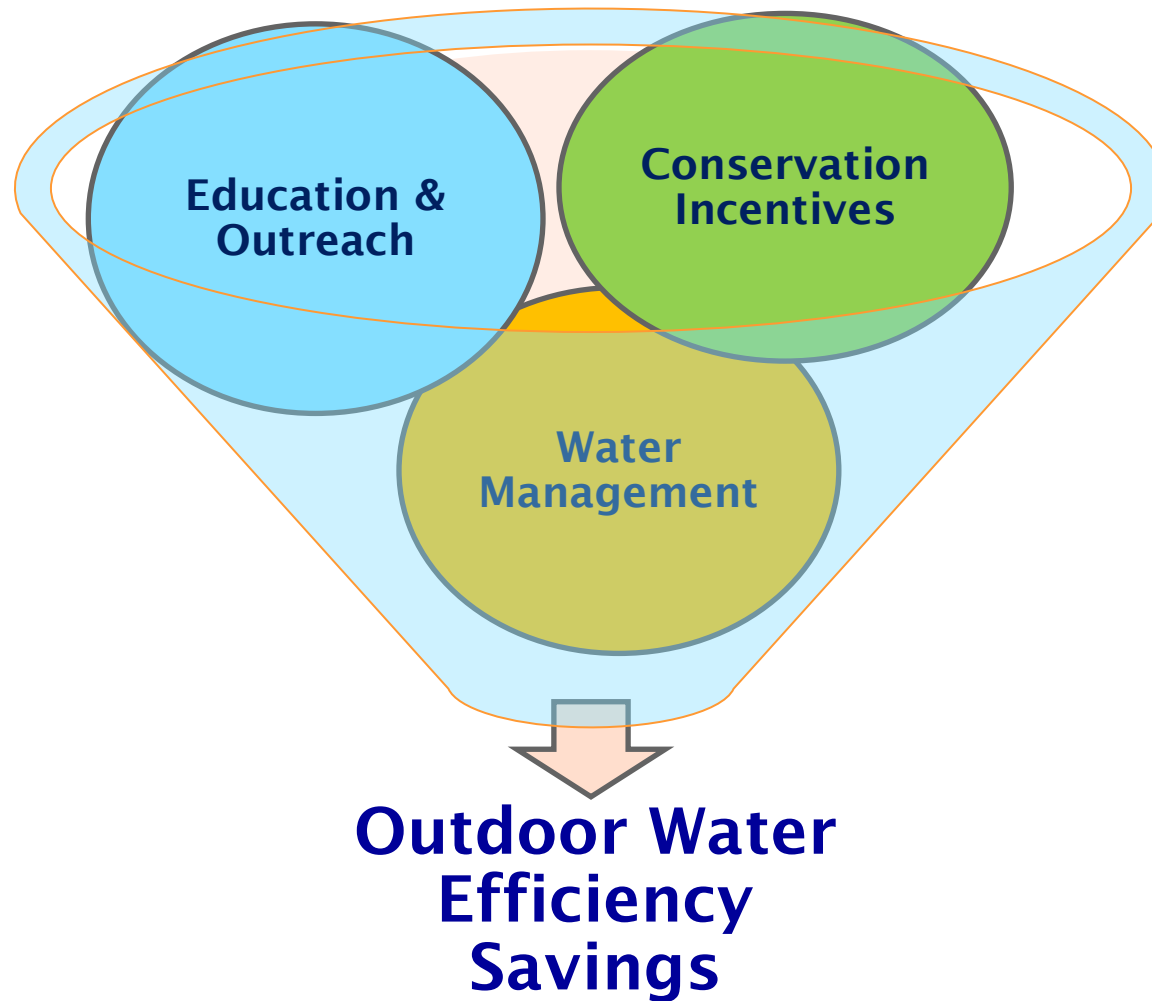


Supply Side
Conservation



Research &
Development

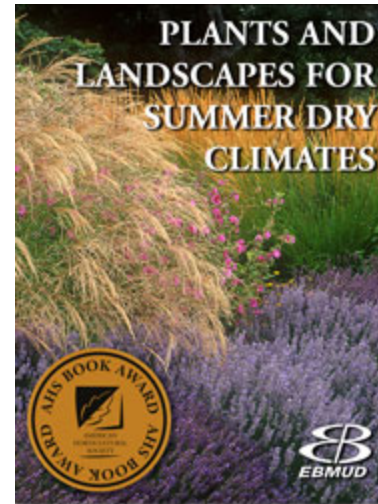
WaterSmart Gardener Program Elements



WaterSmart Gardener Program Education & Outreach



- Public education
- Marketing (nurseries)
- Community events
- Conservation workshops
- Training/certification (landscapers)



A WORKSHOP FOR LANDSCAPE IRRIGATION MANAGERS

GET AHEAD OR GET PARCHED: SIX WAYS TO SURVIVE THE DROUGHT

Learn how to keep your landscape and reduce water use by improving water management and system efficiency. This workshop features indoor presentations and outdoor demonstrations on the following topics:

TOPICS

1. Understanding precipitation rates (PR) to reduce runoff
2. Improving sprinkler distribution uniformity (DU) to reduce water use
3. Improving controller programs during mandatory water restrictions
4. Determining application rates and PR of drip/micro irrigation
5. Understanding soils to reduce runoff or deep percolation
6. Understanding water meters to improve irrigation efficiency

WHEN June 25th, 2014, English 7:30 AM-11:30 AM & Spanish 12:00 PM-3:30 PM

WHERE The Gardens at Heather Farm
1540 Marchbanks Drive
Walnut Creek, CA 94598

COST \$20; includes a CEU certificate (for IA and PLANET CEUs)

Attendees will be provided with useful tools and resources to complement the workshop. Refreshments provided by Netafim. Register online at <http://ccuh.ucdavis.edu/>

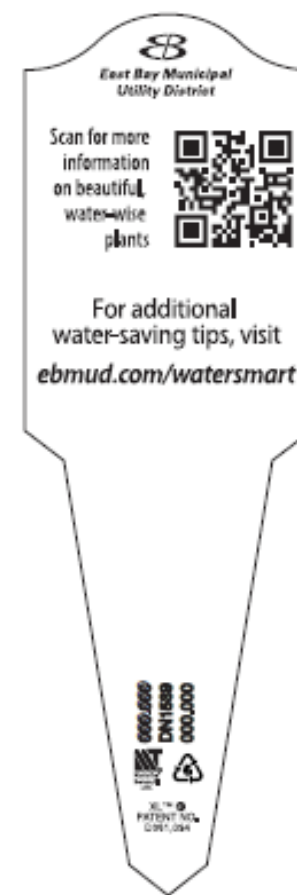


WaterSmart Gardener Program: Nursery Plant Tags/Signage



water SMART Plants

- Beautiful plants that thrive in the East Bay's winter-wet and summer-dry climate
- Water misers that require little to no water once grown
- Resilient plants that resist diseases and pests

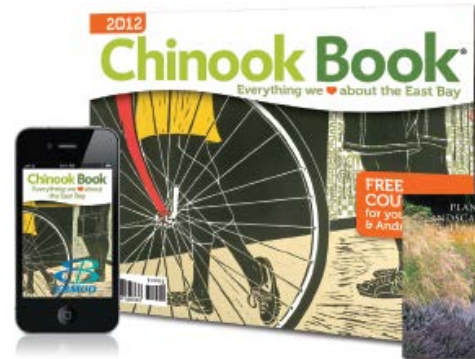


WaterSmart Gardener Program Conservation Incentives



- **Bundled Outdoor Incentives**

- lawn and pool conversions
- drip irrigation
- mulch
- pressure regulators
- sprinkler retrofits
- submetering



- **Mulch Coupon Offers**

- **Community Garden Grants**

- **Graywater “Laundry to Landscape”**

- \$50 for brass 3-way diverter valve

 EAST BAY
MUNICIPAL UTILITY DISTRICT



Up to \$ 2,500 Rebate
Single-Family Residential
Up to \$20,000 Rebate
Commercial & Multi-family
**For Lawn Conversion
& Irrigation Upgrades**

Effective January 1, 2013



EAST BAY MUNICIPAL UTILITY DISTRICT



Community WaterSmart
Garden Grant Program

EAST BAY MUNICIPAL UTILITY DISTRICT



Graywater Rebate
Application Form

WaterSmart Gardener Program Bundled Outdoor Rebates



- Up to \$2,500 residential
- Up to \$20,000 commercial
- \$0.45M in support grants
- 9x increase in participation

