

Water Shortage Emergency Action Plan

Public Outreach Goals



- Thank routine conservers
- Support and encourage customers to continue their voluntary cutbacks
- Give specific information to customer classes about what they can do
- Offer free devices and technical assistance to help customers conserve
- **Implement state water use prohibitions**

Local Agency Responsibilities: Education and Outreach



- Provide notice of the state regulations in English and Spanish to customers
- Train personnel on the regulations
- Coordinate with Save Our Water statewide campaign
- Provide recycled/reclaimed water signage
- Promote conservation and provide incentives

Inform Customers of of State Regulation



- Top of bill message running mid-August to mid-September alerting customers that outdoor watering prohibitions are in effect
- Bill insert describing the state regulations in English, Spanish and Chinese;
- E-mails and *Splashes* articles to educate all staff;
- FAQs for staff who work with customers;

Save Our Water Coordination



- Provided free use of EBMUD billboard at the base of the Bay Bridge in April
- Save Our Water link on our website
- Investigating more opportunities to collaborate



Alert Customers to Water Shortage Emergency Declaration



- Media outreach
- President's letter to stakeholders
- Website update
- Revised drought fact sheet
- Employee notification

A screenshot of the EBMUD website homepage. The header features the EBMUD logo and the text 'EAST BAY MUNICIPAL UTILITY DISTRICT'. A search bar is located in the top right corner. Below the header is a navigation menu with links for 'customers', 'recreation', 'water & wastewater', 'business', and 'about'. The main content area is divided into two columns. The left column features a banner for 'Break up with your lawn' with an image of a lawnmower and dollar signs, followed by a 'Customer Services' section with links for 'My Account', 'Start/Stop Service', 'Service Application for New Construction', 'Water Pressure and Hydrant Flow Information', 'Recreation', 'Wastewater and Bay Protection', and 'A Clean Bay Begins with You'. The right column features a banner for 'SAVE WATER' with the text 'New restrictions in effect.', followed by a 'Project Updates' section with a link for 'Construction Projects', and an 'Our Water' section with a link for 'Drought 2014'. A 'Water Quality' section and a 'Conservation' section with a link for 'WaterSmart Center' are also visible. A 'NEW! Drought Items Available' section is at the bottom right.

Upcoming Actions



- **Ongoing**
 - Reports to SWRCB and to Board on drought
- **September**
 - Supplemental Supply: Year 1 Lessons (September)
- **October - December**
 - End of Water Year Supply Update (October)
 - Supplemental Supply Early '15 Take Decision (Dec)
- **January - April**
 - FY16-17 Budget and Rate Workshops (TBD)

Water Shortage Emergency Declaration

Board of Directors
August 12, 2014

Recommended Action

August 12, 2014



- Declare a Water Shortage Emergency
- Adopt Section 28 –
“Water Use During Water Shortage Emergency
Condition”

State Drought Actions



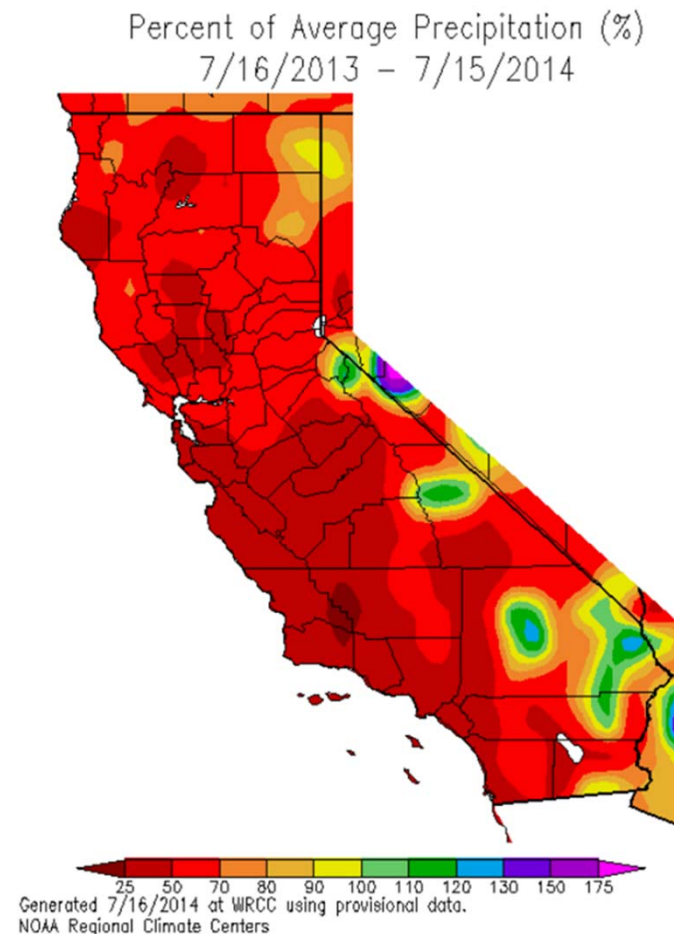
- ✓ Jan 2014 – Drought Emergency Proclamation
- ✓ April 2014 – Executive Order to “redouble state drought actions”
- ✓ July 2014 – Drought Emergency Regulations



State Water Board (SWRCB) Emergency Regulations



- Preserve State's water supplies
- Increase urban water conservation
- User/Water Supplier Regulations
- Remain in effect for 270 days –
(July 28, 2014 - April 25, 2015)



SWRCB Water Waste Prohibitions



1. Watering of outdoor landscapes that cause excess runoff
 2. Using hose to wash motor vehicle, without shut-off nozzle
 3. Washing down driveways and sidewalks
 4. Use of potable water in fountains or water features unless it is recirculated
- (Except for health & safety purposes)



SWRCB Water Supplier Actions



1. Implement a Water Shortage Contingency Plan with mandatory restrictions on outdoor use
2. Customer education/outreach
employee training
3. Advance leak programs and non-potable water supply
4. Evaluate rate structures
5. Monthly water production report to SWRCB



SWRCB Enforcement Actions



1. Water Waste Prohibitions

- Local agency could fine up to \$500/day
- Local agency retains enforcement discretion

2. Mandatory actions by Water Suppliers

- Subject to cease and desist orders with fines up to \$10k/day



Section 28 Regulation Prohibitions



1. Watering of outdoor landscapes that cause excess runoff and no more than 2 days per week
 2. Using hose to wash vehicles, boats, trailers, aircraft without shut-off nozzle
 3. Washing down driveways and sidewalks
 4. Use of potable water in fountains or water features unless it is recirculated
 5. Flushing of sewers or hydrants
- (Except for health & safety, economic, purposes)

Section 28 Regulation – Exceptions and Enforcement



Exceptions –

- Exceptions will be considered and administered by the Manager of Customer and Community Services
- Appeals to the General Manager

Enforcement –

- Education and outreach
- Five stage process

Next Steps



Ongoing Actions –

- Outreach to customers and stakeholders of the new emergency regulations
- Continue to monitor water supply, demand, and conservation savings
- Prepare and take action for future drought
- Complete Water Shortage Action Plan initiatives
- Provide updates to the Board

Chabot Dam Seismic Upgrade Pilot Project Labor Agreement

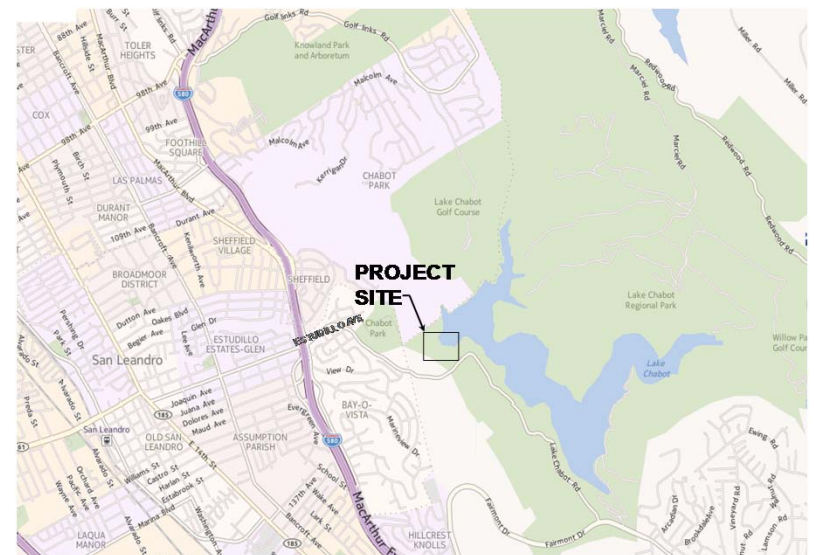
Board Meeting

August 12, 2014

Pilot Project Labor Agreement



- Implement Pilot PLA on Chabot Dam Seismic Upgrade project
 - Authorized on February 11, 2014
 - Currently beginning design
 - Construction to begin in Fall 2015
- Gain experience with level of effort
 - Cost to negotiate and administer
 - Contractor feedback on process and impact



Recent and Upcoming Actions



- Selected Davillier-Sloan to negotiate PLA for District
- Begin exploratory meetings with potential stakeholders and development of negotiating principles in August 2014
- Present negotiating principles for Board consideration in November 2014

Potential Stakeholders



- Alameda County Trades Council
- Individual Building Trades Unions
- Association of General Contractors
- Associated Builders and Contractors
- SBE and Specialty CDSM Contractors
- Interested Community-based Organizations
- Local Pre-apprenticeship Programs

Preliminary Schedule



Action	Date
Exploratory Meetings with Stakeholders	August – October 2014
Board Consideration and Discussion of Principles	November 2014
Negotiation of PLA and Periodic Board Updates	November 2014 – February 2015
Board Consideration of PLA for Approval	March 2015
Final Implementation Plan	April 2015
Construction Contract Bid/Award	Fall 2015

EBMUD has lead over 20 years of habitat improvement on the lower Mokelumne River



• Since 1990, roughly \$1.4 million dollars have been contributed for spawning habitat rehabilitation projects on the LMR

- USFWS – AFRP funding (68%)
- EBMUD funding (24%)
- CADFW funding (6%)
- LMR Partnership funding (2%)

Years	Short tons added	Percent of total added
1990–1995	1,608	2%
1996–2000	8,742	13%
2001–2005	15,104	23%
2006–2012	39,978	61%
	<hr/> 65,432	



Required Environmental Documentation and Permit Renewal



- We are on a 5 year cycle for CEQA Compliance and Permitting
- 2014 new features
 - floodplain habitat
 - Using gravel tailings from EBMUD watershed
 - Calaveras County

**INITIAL STUDY AND
MITIGATED NEGATIVE DECLARATION FOR THE
LOWER MOKELUMNE RIVER SPAWNING
AND REARING HABITAT IMPROVEMENT PROJECT**

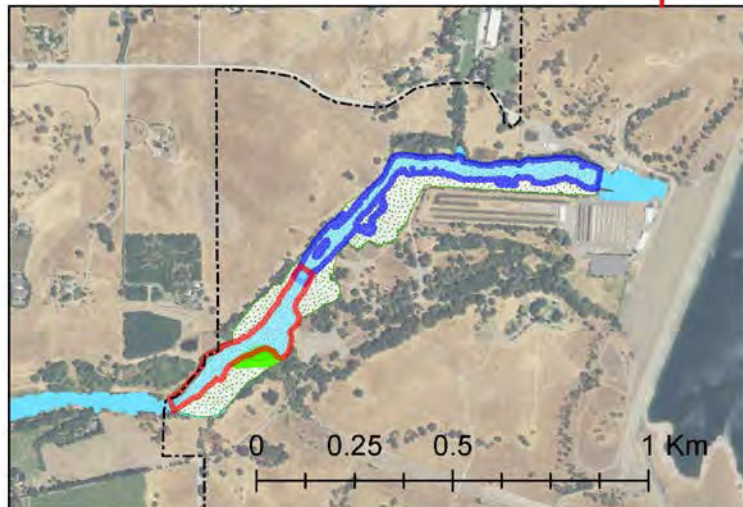
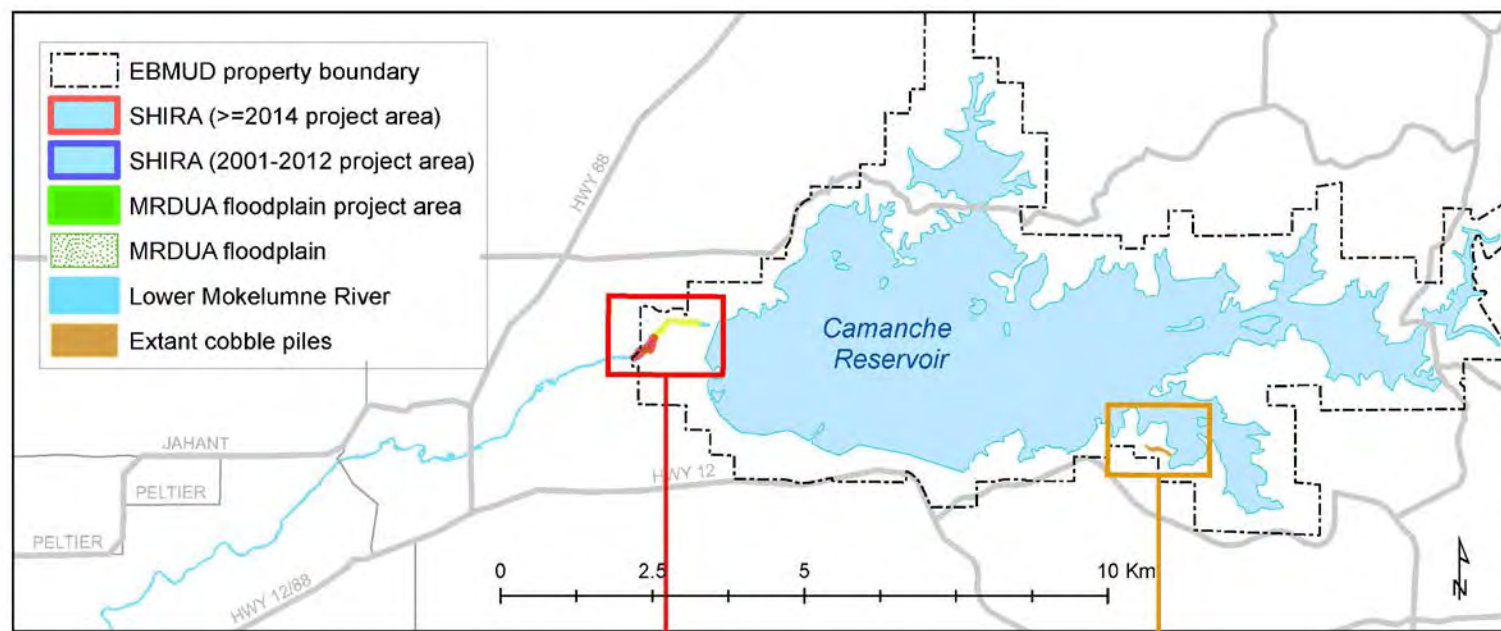
Prepared by:

East Bay Municipal Utility District
1 Winemasters Way, Suite K
Lodi, CA 95240
Contact: Michelle Workman
(209)365-1467

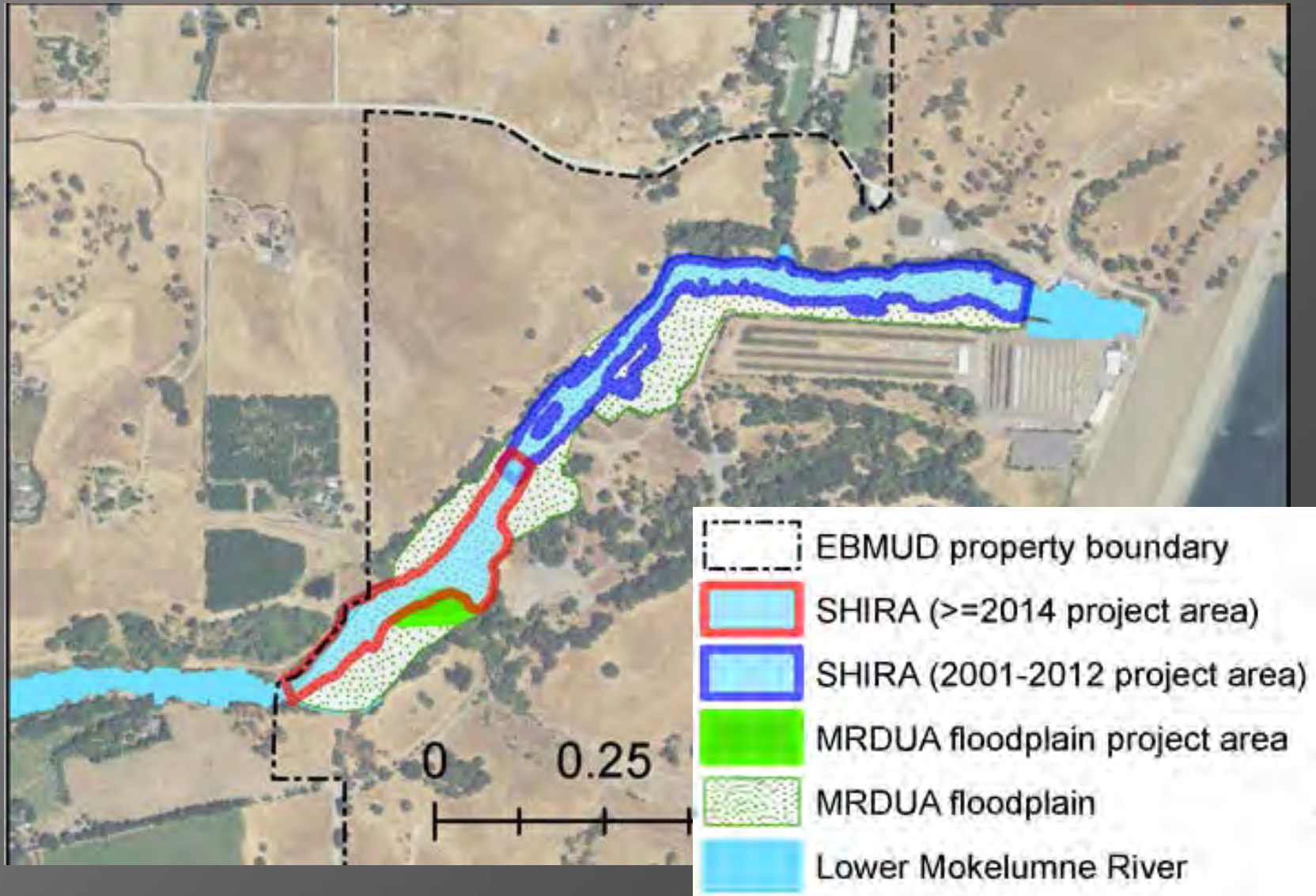


August 2014

2014-2019 Project Area



Spawning Habitat Work

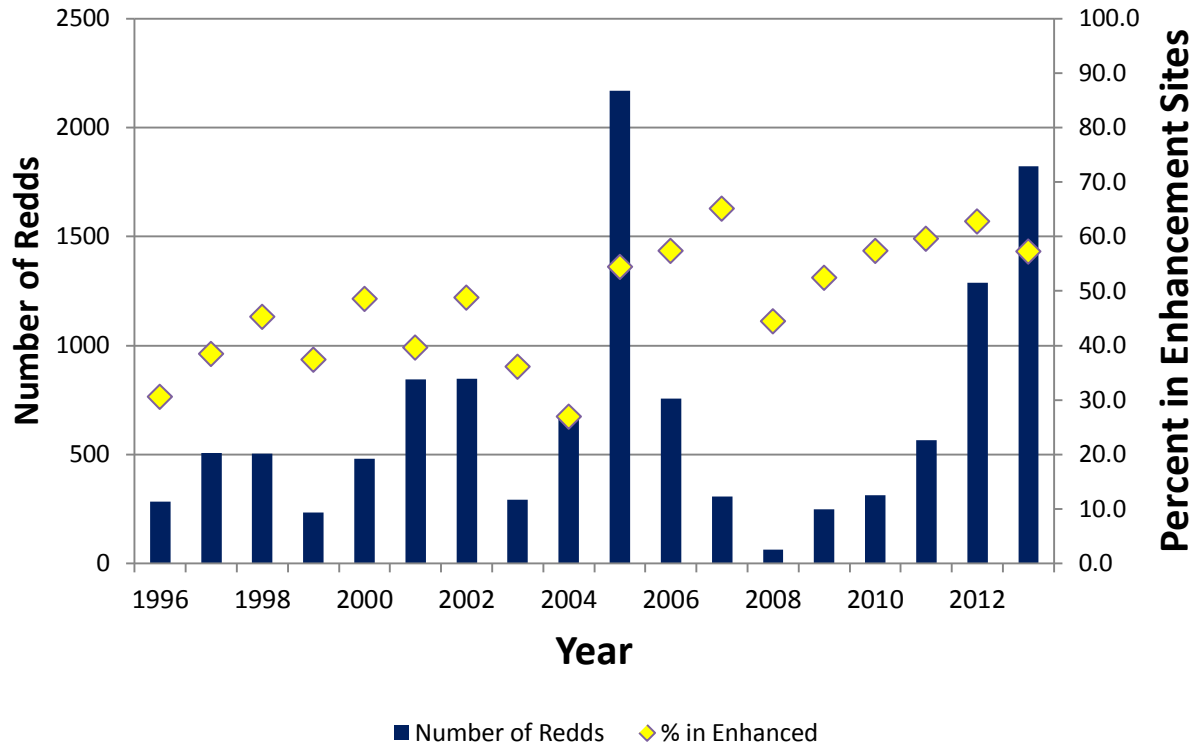


Existing Gravel Piles

- 68 piles on the Camanche Watershed
- Estimated 7,200 yds³ of spawning size material



Project Results - Fish Use



Percent of Use over Time

1996-2001	40.5%
2002-2007	48.1%
2008-2013	55.6%