

Learning Spaces and Conference Center | Overview

LI KA SHING CENTER FOR LEARNING AND KNOWLEDGE | <http://lksc.stanford.edu>

Lecture

Conference Center

Studio

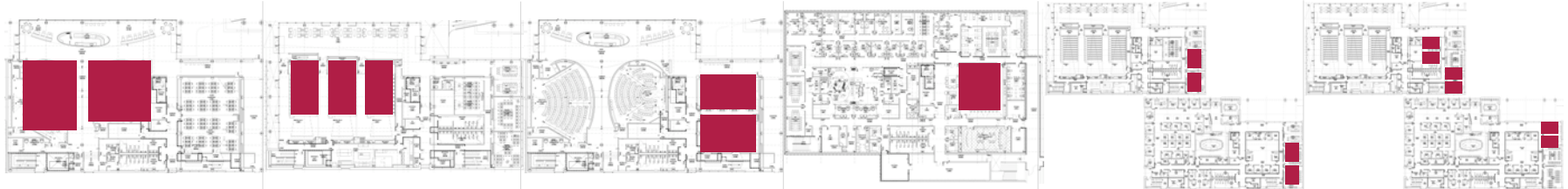
Project

Standard Seminar

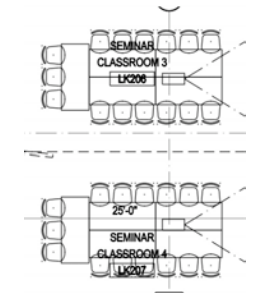
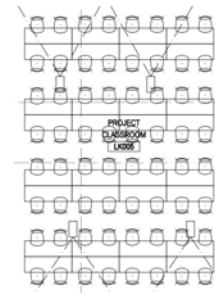
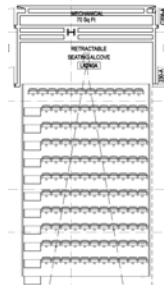
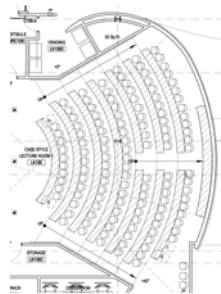
Divisible Seminar



Location



Seating



Rooms

LK120, LK130

LK230/LK240/LK250

LK101/LK102

LK005

LK208, LK209, LK306,
LK308

LK203/LK204, LK205/
LK206, LK304/LK305

Capacity

94 People (LK120)
132 People (LK130)

120/350 People

68/140 People

82 People

33 People

17/35 People

Description

Large tiered spaces with fixed tables and movable chairs; data and power at every seat.

One large "ballroom" style space holding 350 people in pullout tiered seating; divisible into 3 smaller rooms seating about 120 each; can be used for dining at round tables seating 300.

Large flat-floored space similar to M112 with movable tables and chairs around the room to support team-based and small group learning; divisible space will seat 140 when open and 68 in each divided space.

Flat floored space with hard floors intended for group clinical skills training; can also be used for lectures; projection on opposite walls.

Flat floored space with movable tables and chairs with a single screen that seats about 33.

Flat floored space with movable tables and chairs that seat about 17; seats about 35 and provides dual projection when combined.

Immersive Learning Center (ILC) | Overview

LI KA SHING CENTER FOR LEARNING AND KNOWLEDGE | <http://lksc.stanford.edu>

Clinical Skills Exam

Acute Care

Debriefing

Simulation Suite (OR)

Simulation Suite

Part-task Training



Ground Floor

Ground Floor

Ground Floor

Ground Floor

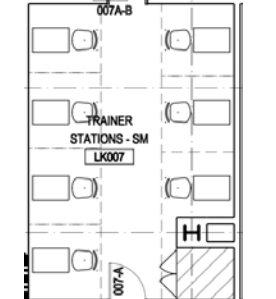
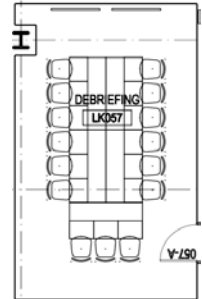
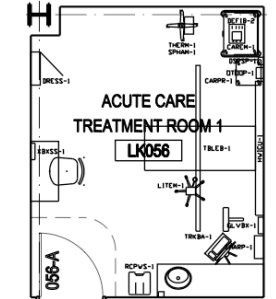
Ground Floor

Ground Floor

Location



Seating



Rooms

LK051 (GYN), LK047 (GYN), LK043, LK040, LK037, LK033, LK030, LK025, LK026, LK027

LK056 (250 sq ft), LK053 (260 sq ft, Bariatric Lift in ceiling)

LK057, LK060, LK063, LK009 (all 360 sq ft)

LK062 (600 sq ft)

LK064 (720 sq ft)

LK007A, LK007B, LK013

Capacity

1-2 Students; 1 Standardized Patient (SP)

1-5 Students; 1 SP or 1 Simulation mannequin

16 People

Variable student capacity, 1 mannequin

Variable student capacity, 3 mannequins

Variable

Description

Clinic-like exam rooms for SP activities. Rooms include B-Line system for AV capture, patient exam table, computer workstation. All rooms can be viewed by instructors via the monitoring room or control room.

Hospital-type room that can be configured as acute care, OB or clinic room for either SP or mannequin-based simulations. Rooms include B-Line system for AV capture, patient bed, computer workstation.

Conference rooms adjacent to simulation suites used for video playback from B-Line AV System.

Simulated OR suite with OR lights, anesthesia machine, etc. Pediatric/adult capabilities. Room can be viewed via the control room. B-Line System for AV capture. Room can be combined with LK064.

Simulated 3 Bay Suite, pediatric/adult capabilities. Room can be viewed via the control room. B-Line AV system. Room can be opened for mass causality simulation activities by combining with LK062.

Part-task training suite is designed for surgical/procedural simulators (e.g. endovascular, endoscopy, central line, etc) and other hands on training. Actual simulation activities to be determined.