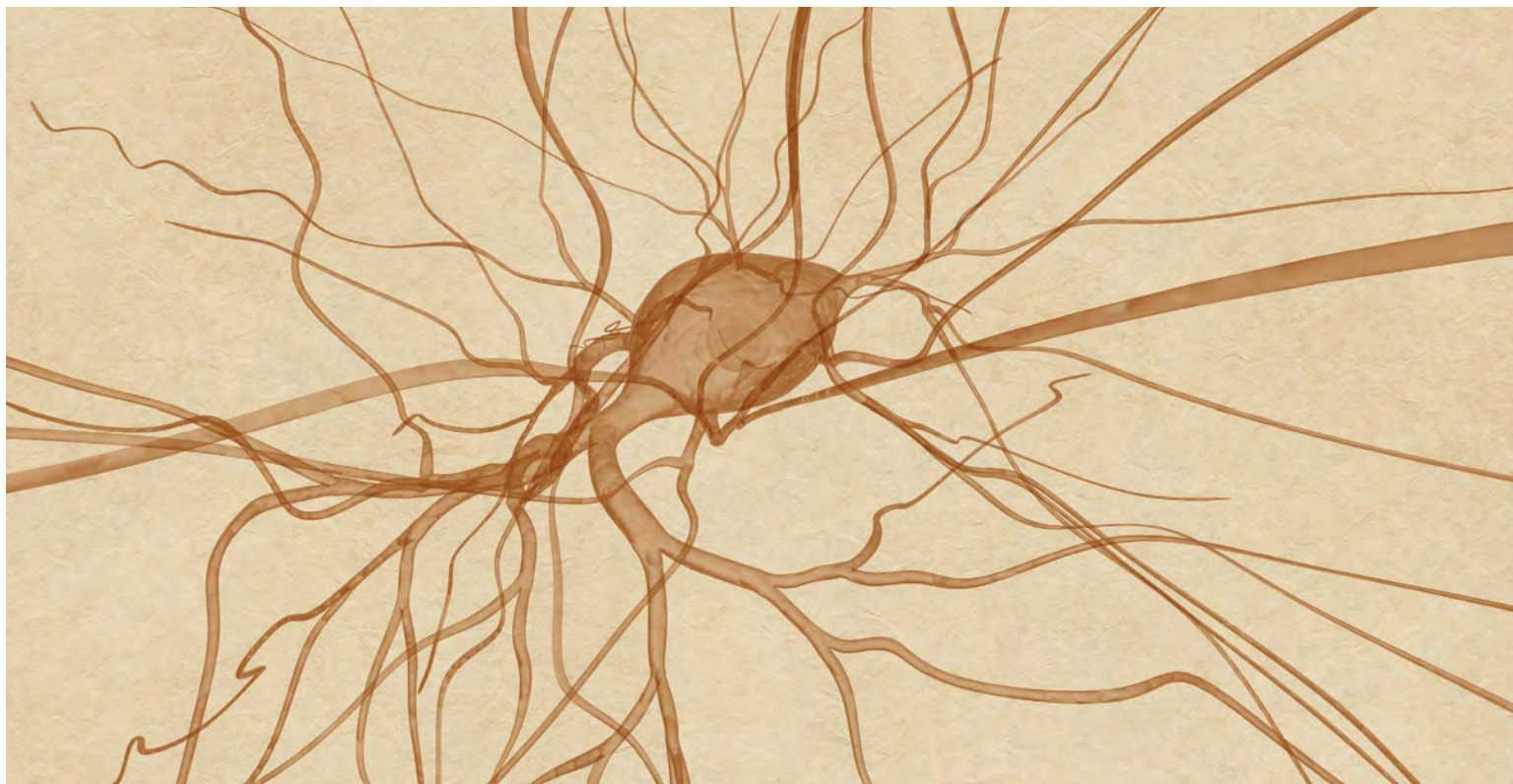


# OVERVIEW

4<sup>th</sup> Annual Breakthroughs in Neurologic Therapies:  
Restoring Function to the Nervous System  
NOVEMBER 1-2, 2013



## STATEMENT OF NEED

This CME activity seeks to fulfill the educational needs of healthcare professionals who manage patients with neurologic conditions. The goal of the symposium is to address identified clinical challenges, to update practitioners on latest advances and best practices in the rapidly evolving field of neuroscience, and to assist practitioners in developing strategies to apply this knowledge to the diagnosis, treatment and/or referral of patients with neurologic diseases and disorders. Lectures with question and answer sessions, panels and case discussions will afford learners the opportunity to discuss practice dilemmas with the expert faculty.

## TARGET AUDIENCE

This course is designed for primary care physicians, neurologists, interventional radiologists, neurosurgeons, rehabilitation physicians, neuro-oncologists, emergency medicine physicians, nurses and allied health professionals who manage patients with neurologic diseases and disorders.

## ACCREDITATION

The Stanford University School of Medicine is accredited by the Accreditation Council for Continuing Medical Education (ACCME) to provide continuing medical education for physicians.

## CREDIT DESIGNATION

Stanford University School of Medicine designates this live activity for a maximum of 12.50 *AMA PRA Category 1 Credits™*. Physicians should claim only the credit commensurate with the extent of their participation in the activity.

The California Board of Registered Nursing recognizes that Continuing Medical Education (CME) is acceptable for meeting RN continuing education requirements; as long as the course is certified for *AMA PRA Category 1 credit(s)™ (rn.ca.gov)*. Nurses will receive a Certificate of Attendance following this activity that may be used for license renewal.

## ADDITIONAL PROGRAMMING OFFERED BY STANFORD CENTER FOR CME

### Navigating Spine Care 2014

May 3, 2014

Palo Alto, CA

For additional details visit online at:  
[cme.stanfordhospital.org](http://cme.stanfordhospital.org)

Tell a colleague; to register online go to: [cme.stanfordhospital.org](http://cme.stanfordhospital.org)

**Stanford Hospital & Clinics**

Stanford Center for Continuing Medical Education  
1070 Arastradero Road, Suite 230  
Palo Alto, CA 94304

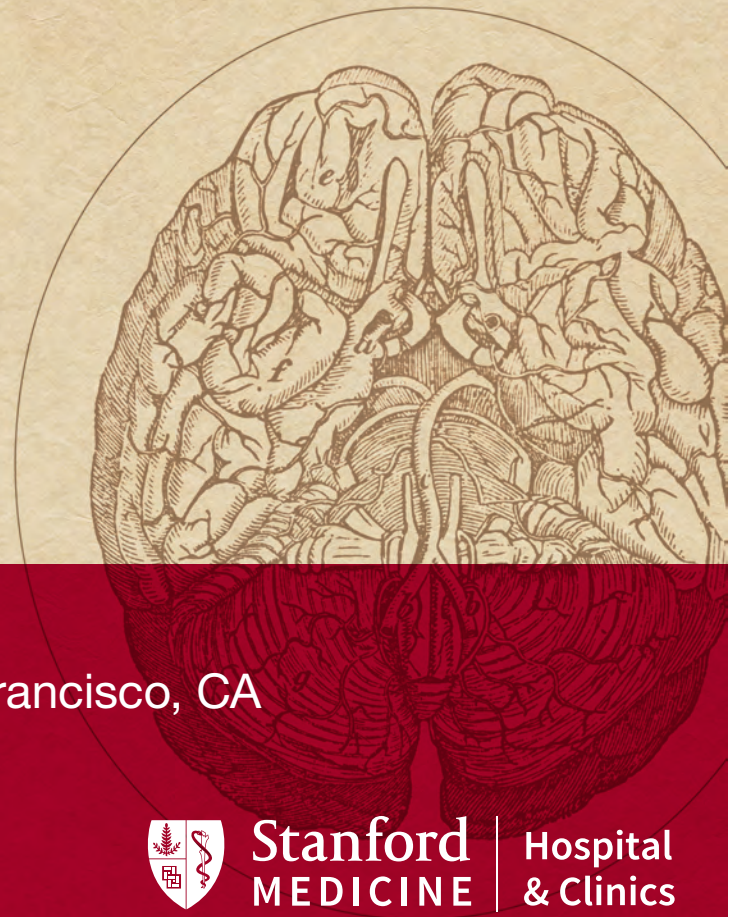
NONPROFIT ORG.  
U.S. POSTAGE  
**PAID**  
PALO ALTO, CA  
PERMIT NO. 188

[cme.stanfordhospital.org](http://cme.stanfordhospital.org)

STANFORD HOSPITAL & CLINICS PRESENTS

# 4th Annual Breakthroughs In Neurologic Therapies

RESTORING FUNCTION TO THE NERVOUS SYSTEM



November 1-2, 2013

JW Marriott • Union Square • San Francisco, CA

Sponsored by the Stanford University School of Medicine  
A Continuing Medical Education Conference



**Stanford**  
MEDICINE

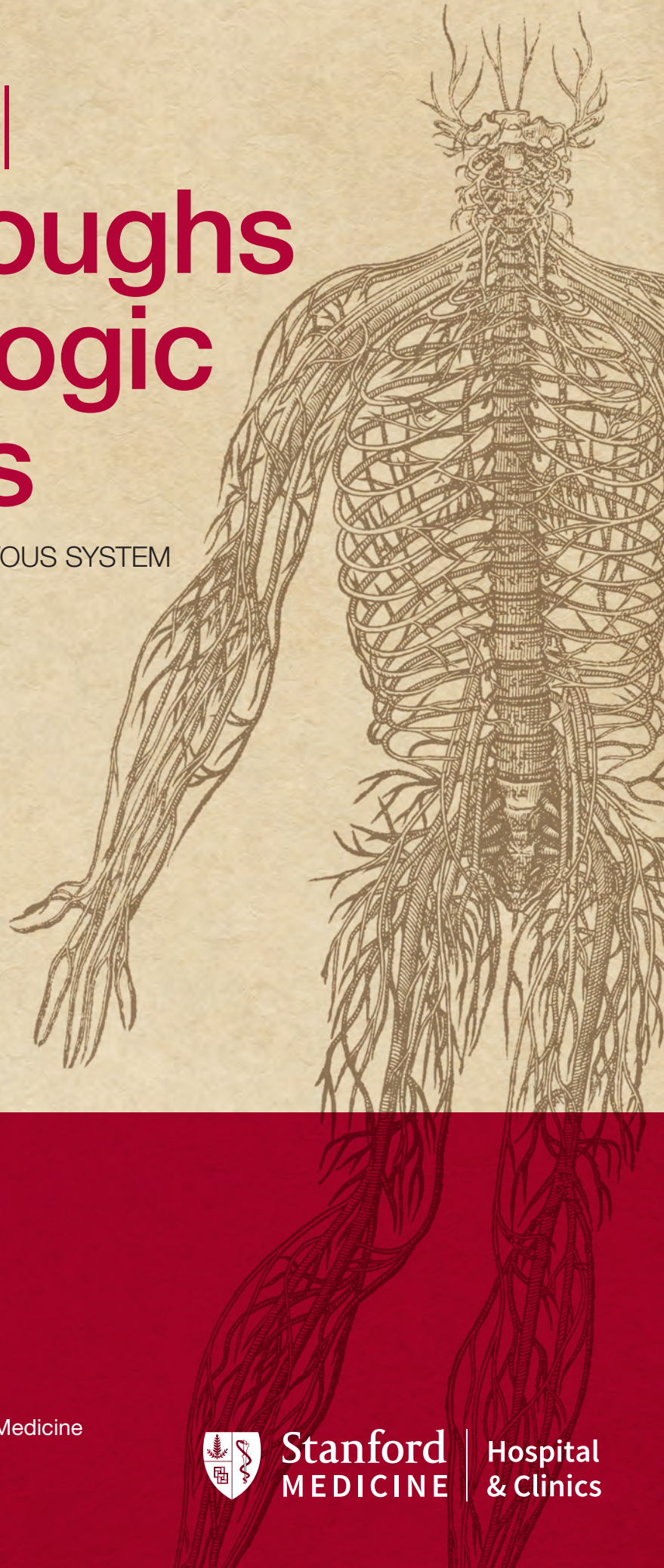
**Hospital  
& Clinics**



STANFORD HOSPITAL & CLINICS PRESENTS

# 4th Annual Breakthroughs In Neurologic Therapies

RESTORING FUNCTION TO THE NERVOUS SYSTEM



November 1-2, 2013

JW Marriott  
Union Square  
San Francisco, CA

Sponsored by the Stanford University School of Medicine  
A Continuing Medical Education Conference



**Stanford**  
MEDICINE

**Hospital  
& Clinics**



# PROGRAM

4<sup>th</sup> Annual Breakthroughs in Neurologic Therapies:  
Restoring Function to the Nervous System  
NOVEMBER 1-2, 2013

## FRIDAY, NOVEMBER 1, 2013

- 8:00-8:10am **Welcome and Announcements**  
Gregory Albers, MD
- 8:10-8:30 **Indications for New and Emerging Therapies for Multiple Sclerosis**  
Alexandra Goodyear, MD, MS
- 8:30-8:50 **Risks of New and Emerging Therapies for Multiple Sclerosis**  
Jeffrey Dunn, MD
- 8:50-9:10 **Antiepileptic Drugs and Pregnancy**  
Kimford Meador, MD
- 9:10-9:30 **Top 10 Epilepsy Errors**  
Robert Fisher, MD, PhD
- 9:30-10:00 **Q&A discussion**  
Moderator: Robert Fisher, MD, PhD
- 10:00-10:20 Break**
- 10:20-10:40 **Stroke Prevention Update**  
Gregory Albers, MD
- 10:40-11:00 **Advances in Therapy for Acute Ischemic Stroke**  
Maarten Lansberg, MD, PhD
- 11:00-11:20 **Intracerebral Hemorrhage: What Comes Next?**  
Marion Buckwalter, MD, PhD
- 11:20-11:40 **Endovascular and Minimally Invasive Interventions for Hemorrhagic Stroke**  
Robert Dodd, MD, PhD
- 11:40-12:10 **Q&A Discussion**  
Moderator: Greg Albers, MD
- 12:10-1:20pm **Lunch provided onsite**
- 1:20-2:20 **Panel presentation—Neuromuscular Disorders**  
Moderator: John Day, MD, PhD  
Panel: Neelam Goyal, MD; John Ratliff, MD; Yuen So, MD; Carolina Tesi Rocha, MD
- 2:20-2:50 **Diagnosis, Please: Neuroimaging Challenge**  
Nancy Fischbein, MD
- 2:50-3:10 Break**
- 3:10-3:30 **Formal Autonomic Testing: How Does it Help?**  
Srikanth Muppidi, MD
- 3:30-3:50 **Autonomic Lab**  
Safwan Jaradeh, MD
- 3:50-4:10 **Practical Implications of Accurate Dementia Diagnosis**  
Sharon Sha, MD, MS
- 4:10-4:30 **Current Alzheimer's Disease Therapeutics**  
Frank Longo, MD, PhD
- 4:30-4:50 **Q&A Discussion**  
Moderator: Frank Longo, MD, PhD
- 5:00-6:00 WELCOME RECEPTION**

## SATURDAY, NOVEMBER 2, 2013

- 8:00-8:10am **Announcements**  
Jaimie Henderson, MD
- 8:10-8:30 **Staying Current in the Management of the Neurotrauma Patient: Polytrauma System of Care**  
Odette Harris, MD, MPH
- 8:30-8:50 **Management of Traumatic Brain Injury: From Concussion to Severe TBI**  
Karen Hirsch, MD
- 8:50-9:30 **Management Approaches to Challenging Movement Disorders**  
Helen Bronte-Stewart, MD, MSE and Camilla Kilbane, MD
- 9:30-10:00 **Q&A Session**  
Moderator: Helen Bronte-Stewart, MD, MSE
- 10:00-10:20 Break**
- 10:20-10:40 **Neurosurgical Advances in the Treatment of Brain Tumors**  
Gordon Li, MD
- 10:40-11:00 **Medical Management of Glioma: Moving Toward Personalized Care**  
Seema Nagpal, MD
- 11:00-11:30 **Stem Cell Update**  
Gary Steinberg, MD, PhD
- 11:30-12:00pm **Q&A Session**  
Moderator: Griffith Harsh, MD
- 12:00-1:30 Lunch on your own in the city**
- 1:30-1:50 **Hypopituitarism in the Setting of Brain Injury: An Evolving Field**  
Laurence Katznelson, MD
- 1:50-2:50 **Panel Presentation—Facial Pain/Headache**  
Moderator: Jaimie Henderson, MD  
Panelists: Steven Chang, MD; Robert Cowan, MD; Sheena Aurora, MD
- 2:50-3:10 Break**
- 3:10-3:30 **Early Introduction to Rehabilitation in ICU**  
Stephen McKenna, MD
- 3:30-3:50 **Physical Activity: A Common Link Between Back Pain and Obesity**  
Matthew Smuck, MD
- 3:50-4:10 **When Should You Send Your Back Pain Patient to the Neurosurgeon**  
Lawrence Shuer, MD, FAANS
- 4:10-4:40 **Q&A Discussion**  
Moderator: Gary Steinberg, MD, PhD
- 4:40 **ADJOURN**

# FACULTY

4<sup>th</sup> Annual Breakthroughs in Neurologic Therapies:  
Restoring Function to the Nervous System  
NOVEMBER 1-2, 2013

All faculty affiliated with Stanford University School of Medicine.

## COURSE DIRECTORS

### Gregory Albers, MD

Coyote Foundation Professor of Neurology and  
Neurological Sciences  
Director, Stanford Stroke Center

### Jaimie Henderson, MD

Associate Professor of Neurosurgery  
Robert and Ruth Halperin Faculty Scholar  
Director, Stereotactic and Functional Neurosurgery  
Co-Director, Neural Prosthetics Translational Laboratory

## FACULTY

### Sheena Aurora, MD

Clinical Associate Professor of Neurology &  
Neurological Sciences

### Helen Bronte-Stewart, MD, MSE

John E. Cahill Family Professor of Neurology &  
Neurological Sciences  
Director, Stanford Movement Disorders Center

### Marion S. Buckwalter, MD, PhD

Assistant Professor of Neurology & Neurological  
Sciences and Neurosurgery

### Steven D. Chang, MD

Robert C. and Jeannette Powell Professor of Neurosurgery  
Co-Director, Stanford Cyberknife Program

### Robert Cowan, MD

Clinical Professor of Neurology & Neurological Sciences  
Director, Stanford Headache Program

### John Day, MD, PhD

Professor of Neurology & Neurologic Sciences  
and of Pediatrics  
Director, Neuromuscular Division and Clinics

### Robert Dodd, MD, PhD

Assistant Professor, Departments of Neurosurgery  
and Radiology

### Jeffrey Dunn, MD

Professor of Neurology  
Director, Stanford Multiple Sclerosis Center

### Nancy Fischbein, MD

Professor of Radiology  
Acting Chief, Neuroradiology  
Chief, Head and Neck Radiology

### Robert Fisher, MD, PhD

Maslah Saul, MD Professor of Neurology  
& Neurological Sciences  
Director, Comprehensive Epilepsy Center

### Alexandra Goodyear, MD, MS

Clinical Assistant Professor of Neurology &  
Neurological Sciences  
Medical Director, Stanford Neurosciences  
Clinical Trials Group

### Neelam Goyal, MD

Clinical Assistant Professor of Neurology &  
Neurological Sciences

### Odette Harris, MD, MPH

Associate Professor of Neurosurgery  
Director, Brain Injury, Department of Neurosurgery  
Associate Chief of Staff, Polytrauma, Palo Alto Veterans'  
Affairs Health Care System (PAVAHCS)

### Griffith Harsh, MD

Professor of Neurosurgery  
Associate Dean, Stanford Center for CME  
Director, Stanford Brain Tumor Center

### Karen Hirsch, MD

Assistant Professor of Neurology  
Interim Program Director, Neurocritical Care

### Safwan Jaradeh, MD

Professor of Neurology and Neurological Sciences  
Director, Stanford Autonomic Disorders Program

### Laurence Katznelson, MD

Professor of Neurosurgery and of Medicine  
(Endocrinology, Gerontology, Metabolism)  
Medical Director, Pituitary Center  
Director, Endocrinology Fellowship Training Program

### Camilla Kilbane, MD

Clinical Assistant Professor of Neurology &  
Neurological Sciences

### Maarten Lansberg, MD, PhD

Assistant Professor of Neurology & Neurological Sciences

### Gordon Li, MD

Assistant Professor of Neurosurgery

### Frank M. Longo, MD, PhD

George and Lucy Becker Professor  
Chair, Department of Neurology and Neurologic Sciences

### Stephen L. McKenna, MD

Clinical Assistant Professor of Internal Medicine  
and of Neurosurgery  
Director, Rehabilitation Trauma Center Santa Clara Valley  
Medical Center (SCVMC)  
Department of Physical Medicine and Rehabilitation

### Kimford Meador, MD

Professor of Neurology & Neurological Sciences  
Director, Epilepsy Monitoring Unit

### Srikanth Muppudi, MD

Assistant Professor of Neurology

### Seema Nagpal, MD

Clinical Assistant Professor of Neurology &  
Neurological Sciences

### John Ratliff, MD

Associate Professor of Neurosurgery  
Co-director, Division of Spine and Peripheral Nerve Surgery

### Ana Carolina Tesi Rocha, MD

Pediatric Neurologist

### Sharon J. Sha, MD, MS

Clinical Assistant Professor of Neurology &  
Neurological Sciences

### Lawrence M. Shuer, MD, FAANS

Professor of Neurosurgery  
Associate Chair, Quality, Department of Neurosurgery  
Clinic Chief, Neurosurgery

### Matthew Smuck, MD

Associate Professor of Orthopaedics  
Chief, Physical Medicine & Rehabilitation  
Medical Director, Rehabilitation Services

### Yuen So, MD

Professor of Neurology & Neurological Sciences  
Director, Neurology Clinics

### Gary Steinberg, MD, PhD

Bernard and Ronni Lacroute-William Randolph Hearst  
Professor of Neurosurgery and the Neurosciences  
Director, Stanford Institute for Neuro-Innovation and  
Translational Neurosciences  
Chairman, Department of Neurosurgery

## LEARNING OBJECTIVES

- Incorporate current screening, diagnosis and/or management strategies for patients presenting with the following selected diseases and disorders in order to improve quality of care:
  - Multiple Sclerosis
  - Alzheimer's Disease
  - Parkinson's Disease
  - Stroke
  - Traumatic Brain Injury
  - Epilepsy
  - Headache/Facial Pain
  - Back Pain
- Evaluate the most current technologies utilized for diagnosing and treating patients with neurologic disorders including:
  - Neuro-rehabilitation
  - Stem cell therapy
  - Neuroimaging
- Appropriately determine when patients should be referred for additional diagnostic and/or treatment of neurological disorders.
- Develop strategies to educate, counsel, treat and/or refer patients with primary and secondary CNS tumors utilizing knowledge regarding recent advances in neuro-oncology.
- Develop strategies for utilizing autonomic testing to accurately diagnose autonomic impairment in patients with neurological syndromes (including neuropathy, autonomic failure, multiple system atrophy, Parkinson's disease and postural orthostatic tachycardia syndrome) in a timely fashion.

# REGISTRATION

4<sup>th</sup> Annual Breakthroughs in Neurologic Therapies:  
Restoring Function to the Nervous System  
NOVEMBER 1-2, 2013

## VENUE INFORMATION

**JW Marriott San Francisco Union Square**  
500 Post Street • San Francisco, CA, 94102  
*Corner of Post and Mason*

Hotel phone: 415.771.8600  
Marriott reservations: 800.228.9290  
[www.marriott.com/sfojw](http://www.marriott.com/sfojw)

## REGISTRATION

Please register early — hotel and conference space are limited. Registration fee includes welcome reception, continental breakfasts with course faculty, lunch on Friday, course materials and certificate of attendance.

Please register and pay online by credit card at [cme.stanfordhospital.org/#neuro](http://cme.stanfordhospital.org/#neuro). If you prefer to pay by check, please first register online, then send your check to the Stanford Center for CME address below (*Note that your registration is not confirmed until payment is received*).

	Early Bird Discount	After October 15, 2013
Physician	<input type="checkbox"/> \$495	<input type="checkbox"/> \$645
Allied Health Professional	<input type="checkbox"/> \$300	<input type="checkbox"/> \$345

## CANCELLATION POLICY

A written notice of cancellation must be received by **October 15, 2013**. A \$75.00 cancellation fee will be assessed at that time; after that date, cancellation refund requests cannot be honored. Program materials cannot be guaranteed unless enrollment is received by **October 15, 2013**. Stanford University School of Medicine reserves the right to cancel this program: in the event of cancellation, course fees will be fully refunded.

## Stanford Center for Continuing Medical Education

1070 Arastradero Road, Suite 230 • Palo Alto, CA 94304  
Phone: 650.497.8554 • Email: [stanfordcme@stanford.edu](mailto:stanfordcme@stanford.edu) • Web: [cme.stanfordhospital.org](http://cme.stanfordhospital.org)

## FACULTY DISCLOSURE

The Stanford University School of Medicine adheres to ACCME Essential Areas, Standards, and Policies regarding industry support of continuing medical education. Disclosure of faculty and commercial relationships will be made prior to the activity.



Stanford University School of Medicine is fully ADA compliant. If you have needs that require special accommodations, including dietary concerns, please contact [bpannoni@stanfordmed.org](mailto:bpannoni@stanfordmed.org) or **650.724.7166**, before October 15, 2013.

## ABOUT STANFORD HOSPITAL & CLINICS

Stanford Hospital & Clinics is known worldwide for advanced treatment of complex disorders in areas such as cardiovascular disease, cancer treatment, neurosciences, surgery and organ transplant. Consistently ranked among "America's Best Hospitals" by U.S. News and World Report, Stanford is internationally recognized for translating medical breakthroughs into care of patients. For more information, please visit [stanfordhospital.org](http://stanfordhospital.org).

For more information about Stanford School of Medicine Departments of Neurology and Neurosurgery, please visit:

- [neurology.stanford.edu](http://neurology.stanford.edu)
- [med.stanford.edu/neurosurgery](http://med.stanford.edu/neurosurgery)

## ACCOMMODATIONS

A block of rooms is being held for conference participants. Rooms at these special rates have been reserved for attendees on a first-come, first-served basis and may sell out before the cut-off date. Please contact the hotel directly at 800.605.6568 to make reservations, or visit <https://resweb.passkey.com/go/jwmarriott> to register online. To receive the group rate of \$239 per night, single or double occupancy, indicate that you are attending the Stanford University School of Medicine 4<sup>th</sup> Annual Breakthroughs in Neurologic Therapies. The JW Marriott reserves the right to close the room block 30 days before the conference.

## PARKING AND TRANSPORTATION

Valet parking is available at the JW Marriott San Francisco Union Square. The charge is \$56.00 per day including in and out privileges, and \$66.00 per day for oversized vehicles, plus applicable taxes. For other parking options, visit [www.unionsquarshop.com/parking.html](http://www.unionsquarshop.com/parking.html). Consider utilizing public transportation during your visit to San Francisco. For Bay Area transportation information, please visit [www.511.org](http://www.511.org).

## OTHER ACTIVITIES

For information on local activities, please visit [www.onlyinsanfrancisco.com](http://www.onlyinsanfrancisco.com). For questions about this symposium, please contact Barbara Pannoni, CME Coordinator, Stanford Center for Continuing Medical Education at **650.724.7166** or email [bpannoni@stanfordmed.org](mailto:bpannoni@stanfordmed.org). For registration assistance, please phone 650.497.8554 or email [stanfordcme@stanford.edu](mailto:stanfordcme@stanford.edu).

Tell a colleague; to register online go to: [cme.stanfordhospital.org](http://cme.stanfordhospital.org)