

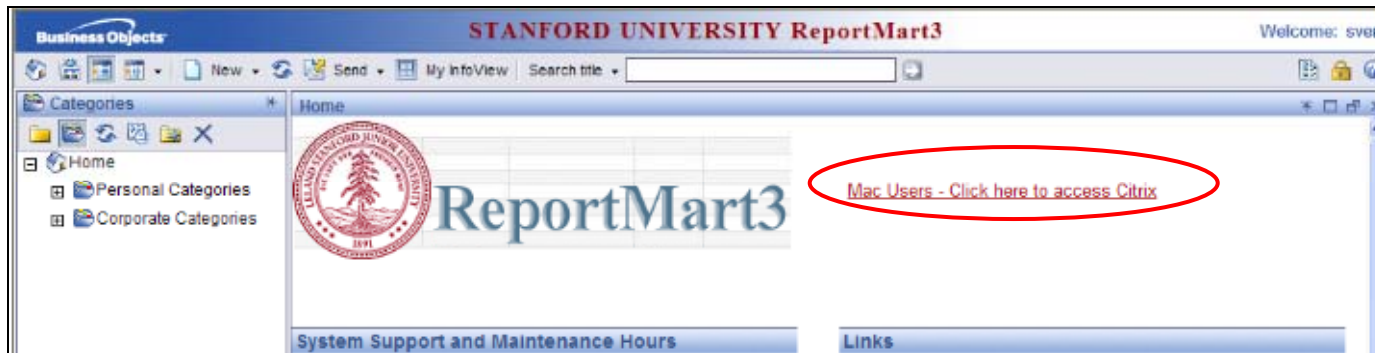
Launching ReportMart3 from a Mac via Citrix/Connect

Step-by-Step Instructions:

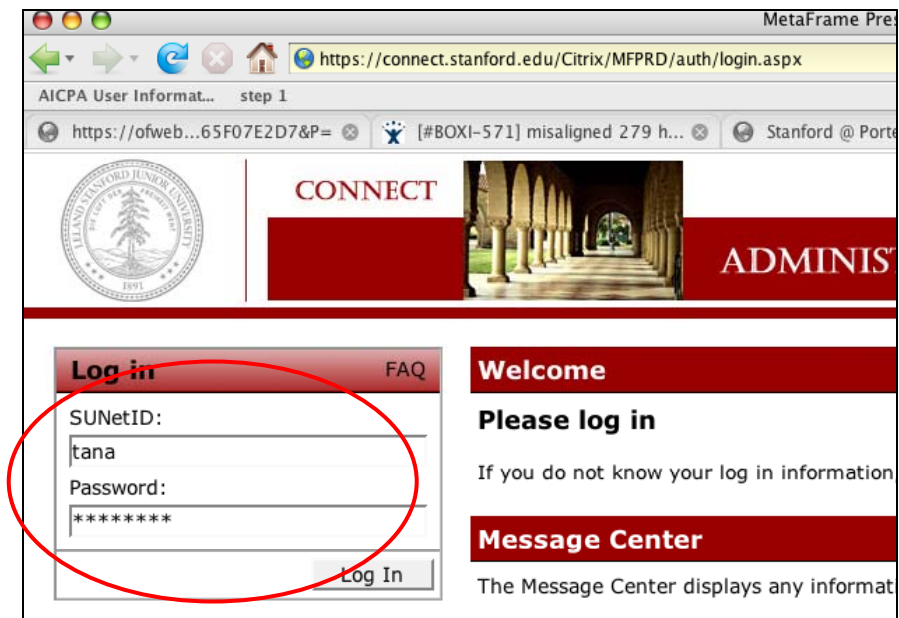
- 1 – Using any browser (Safari or Firefox), access the Connect/Citrix website either directly (<http://connect.stanford.edu>) or log in to ReportMart3 and click on the Mac User link.
- 2 – Log in with your SUNet ID and password.
- 3 – If you've used Connect before, you will be presented a group of icons for Applications to which you have access. If you don't see the icons, then you will need to download the Citrix client. In the center of the window, click on the "MetaFrame Presentation Server Client for OS X" link, which will trigger the installation
- 4 – Click on the ReportMart3 icon.
- 5 – Click "OK" on the confirmation window.
- 6 – Launch iCA will be downloaded and Citrix will be initialized. The Citrix icon will be added to your dock.
- 7 – Click "OK" on Computer and Network Policy Notice.
- 8 – Citrix will begin to launch ReportMart3.
- 9 – Click "yes" to proceed in answer to Security Alert.
- 10 – Log in to authenticate.
- 11 – Click the link to go to ReportMart3.
- 12 – Arrive at ReportMart3 (as if you are running it on a PC with Internet Explorer)! Note that the application that is running is Citrix ICA Client. It will cover 80% of your desktop (see [Setting Preferences for Citrix/Connect Screen Size on a Mac](#)).

The following pages contain the steps with example screen shots.


1 – Using any browser (Safari or Firefox), access the Connect/Citrix website either directly (<http://connect.stanford.edu>) or log in to ReportMart3 and click on the Mac User link:



2 – Log in with your SUNet ID and password:



3 – If you've used Connect before, you will be presented a group of icons for Applications to which you have access. If you don't see the icons, then you will need to download the Citrix client. In the center of the window, click on the "MetaFrame Presentation Server Client for OS X" link, which will trigger the installation.

 **CONNECT**  **ADMINISTRATIVE SYSTEMS**

Log in [FAQ](#)

SUNetID:

Password:

Welcome

Please log in

If you do not know your log in information, or need additional information regard

Message Center

The Message Center displays any information or error messages that may occur.

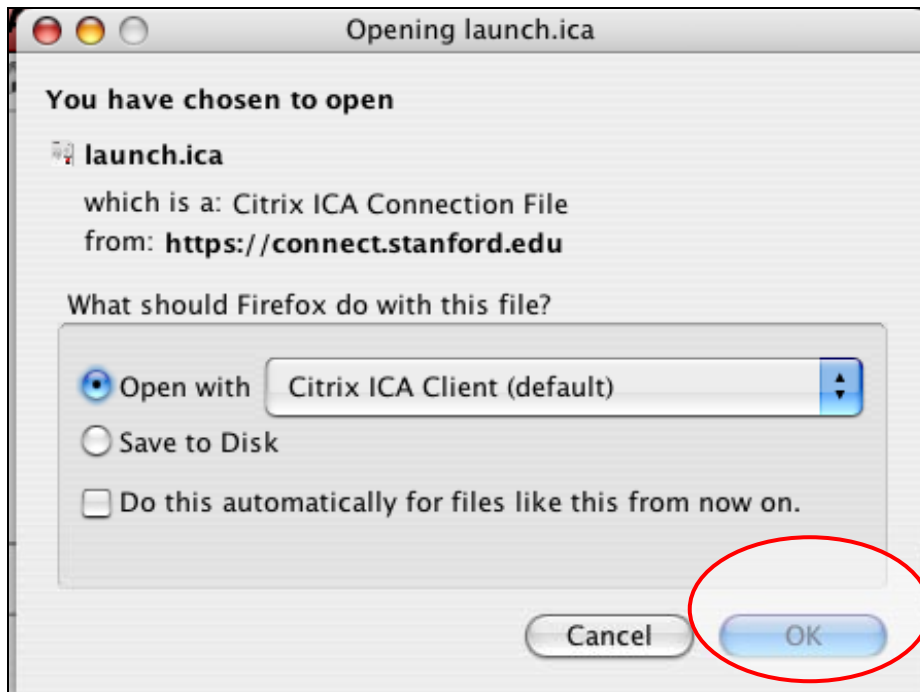
 **WINDOWS USERS:** Administrative Systems recommends that you upgrad
Please uninstall your current Citrix client, and remove any Citrix Program
Click [here](#) for more instructions.

 [MetaFrame Presentation Server Client for Macintosh OSX systems](#)

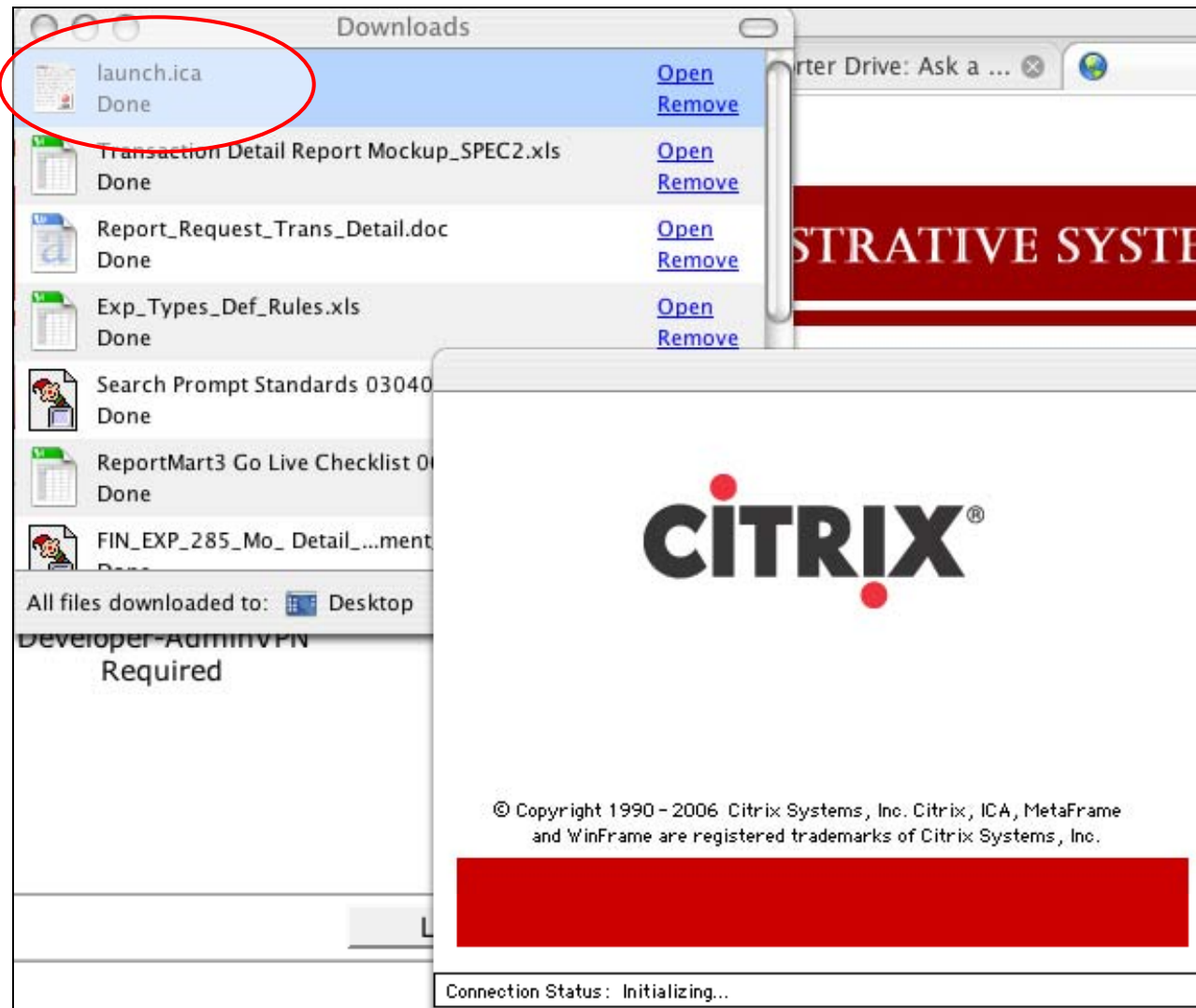
3 – Click on the ReportMart3 icon:



5 – Click “OK” on the confirmation window:



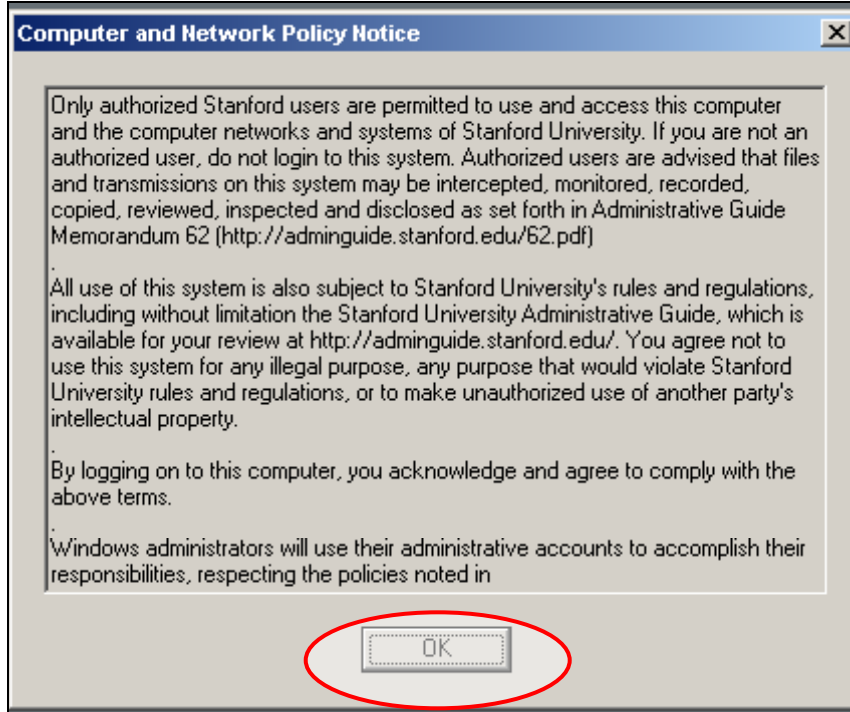
6 – Launch.iCA will be downloaded and Citrix will be initialized:



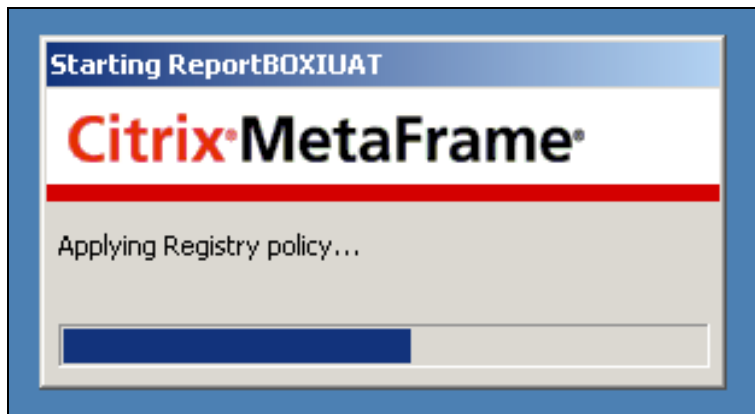
The Citrix icon will be added to your dock:



7 – Click “OK” on Computer and Network Policy Notice:



8 – Citrix will begin to launch ReportMart3 (picture below mentions UAT):



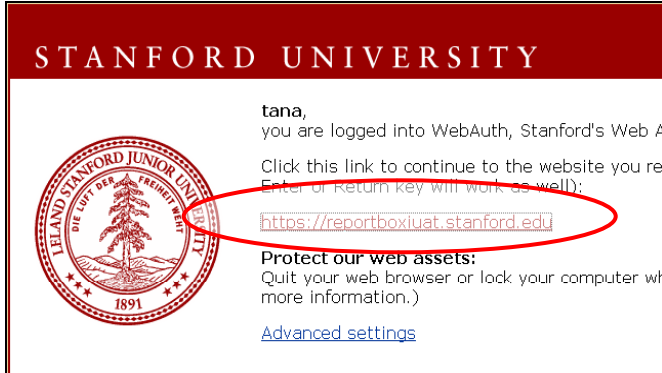
9 – Click “yes” to proceed in answer to Security Alert:



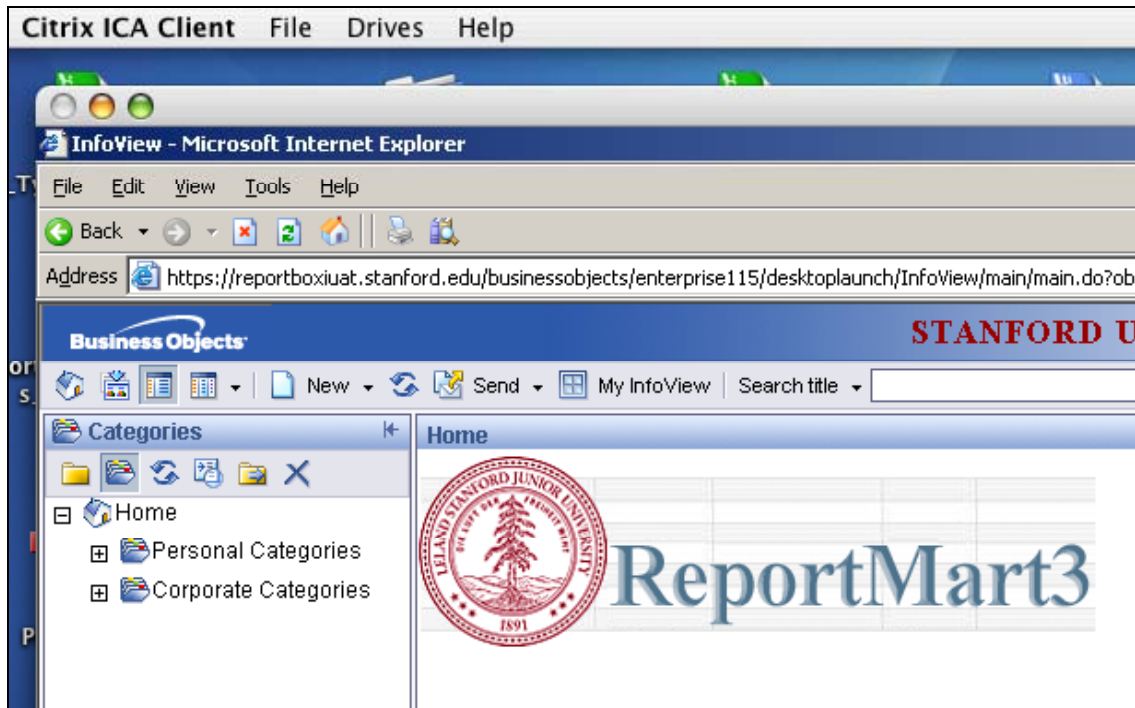
10 – Log in to authenticate:



11 – Click the link to go to ReportMart3:



12 – Arrive at ReportMart3 (as if you are running it on a PC with Internet Explorer)!



Note that the application that is running is Citrix ICA Client. It will cover 80% of your desktop (see Citrix Settings Job Aid)