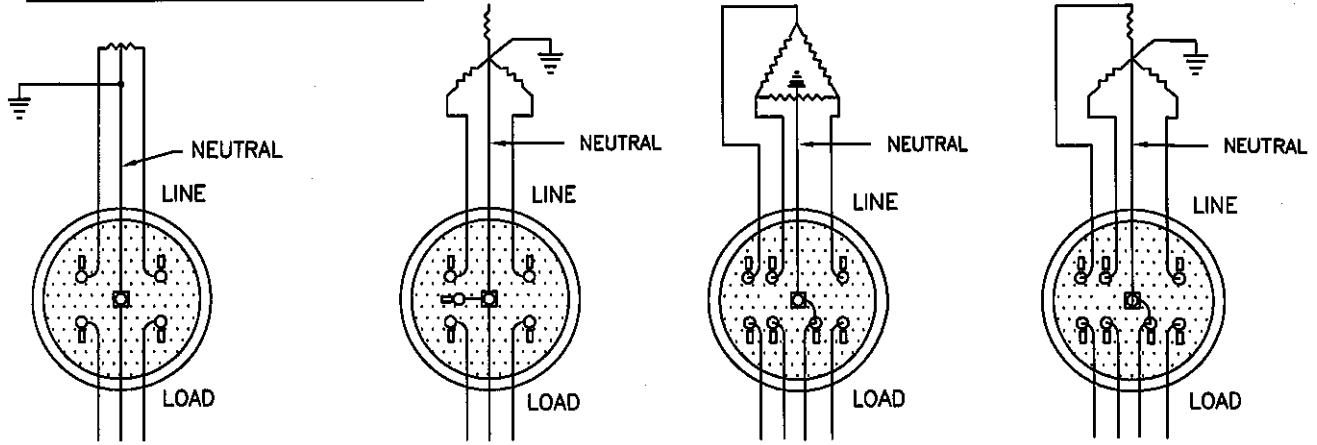


SELF CONTAINED METER SOCKETS



120/240V 1 ϕ 3-WIRE
4-JAW SOCKET

120/208Y V 1 ϕ 3-WIRE
5-JAW SOCKET

120/240V 3 ϕ 4-WIRE
7-JAW SOCKET

120/208Y V 3 ϕ 4-WIRE
7-JAW SOCKET

RESID SERVICES \leq 400 AMPS
(CLASS 320 METERS)

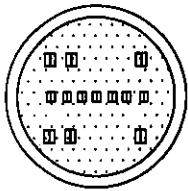
SERVICES \leq 200 AMPS

(REFERENCE ONLY,
NOT AVAILABLE FOR
UPGRADES OR
NEW APPLICATIONS)

SERVICES \leq 200 AMPS

COM SERVICES \leq 200 AMPS

TRANSFORMER RATED METER SOCKETS



120/240 V 1 ϕ 3-WIRE: COM SERVICES > 200 AMPS
120/208Y V 3 ϕ 4-WIRE: SERVICES > 200 AMPS
277/480Y V 3 ϕ 4-WIRE: ALL SERVICE SIZES
13-JAW SOCKET

TEST BYPASS SWITCH REQUIREMENTS

SERVICE TYPE/SIZE	TEST BYPASS SWITCH:
TEMPORARY POWER	
3-PHASE	REQUIRED
1-PHASE	NOT REQUIRED
PERMANENT POWER	
COMMERCIAL	REQUIRED FOR ALL
RESIDENTIAL \leq 200 AMPS	NOT ALLOWED
>200A & \leq 400A	ALLOWED, NOT REQUIRED
>400 AMPS	REQUIRED
3-PHASE	REQUIRED

NOTES:

- TEST BYPASS DEVICES ARE NOT ALLOWED FOR RESIDENTIAL ("RESID") SERVICES \leq 200 A AND ARE REQUIRED FOR RESIDENTIAL SERVICES GREATER THAN 400 A OR FOR 3-PHASE SERVICE.
- TEST BYPASS FACILITIES ARE REQUIRED FOR ALL COMMERCIAL ("COM") PANELS AND ANY 3-PHASE SERVICE.
- LINE CONDUCTORS SHALL ALWAYS BE CONNECTED TO THE TOP TERMINALS OF THE SOCKET, AND LOAD CONDUCTORS CONNECTED TO THE BOTTOM TERMINALS OF THE SOCKET.
- NEUTRAL TAPS SHALL BE CONNECTED TO THE SERVICE NEUTRAL CONDUCTOR AND LOCATED BEHIND SEALED PANELS. WIRE NUTS ARE NOT PERMITTED.
- RESIDENTIAL, SELF-CONTAINED METER SOCKETS SHALL BE UL APPROVED AND SHALL HAVE A MAXIMUM CURRENT RATING EQUAL TO OR GREATER THAN THE CURRENT RATING OF THE ASSOCIATED SERVICE EQUIPMENT.
- METER SOCKETS WITH EXTRUDED OR CAST ALUMINUM JAWS ARE NOT ACCEPTABLE AND WILL NOT BE CONNECTED.
- THE NEUTRAL WIRE (WHITE) SHALL BE CONTINUOUS WITHOUT A SPLICE FROM THE WEATHERHEAD THROUGH THE SOCKET BONDING LUG TO THE NEUTRAL BAR IN THE MAIN SWITCH. WITH SPECIAL PERMISSION, THE NEUTRAL WIRE MAY BE BROKEN IF THE SOCKET IS EQUIPPED WITH AN APPROVED CONNECTION DEVICE.
- THE UTILITY WILL INSTALL THE NECESSARY TRANSFORMERS AND WIRE TRANSFORMER RATED METER SOCKETS.
- FOR RESIDENTIAL SWITCHBOARDS ABOVE 200 AMPS AND ALL COMMERCIAL SWITCHBOARDS FINAL SERVICE EQUIPMENT SUBMITTALS MUST BE PROVIDED TO, AND APPROVED BY CPAU ENGINEERING, PRIOR TO PROCUREMENT AND INSTALLATION. INSTALLATION MUST BE APPROVED BY CITY OF PALO ALTO BUILDING DEPARTMENT AND CPAU BEFORE CONNECTION TO CPAU'S ELECTRIC SYSTEM.

APPROVED 3/1994

MDB
ENGR. MANAGER

ENGINEERING STANDARD
**DIAGRAM OF ELECTRIC
METER SOCKETS**

**CITY OF PALO ALTO
CALIFORNIA**

3	6/13	Added meter connections	TT
2	8/08	REVISED - Test bypass reqs.	TT
1	6/99	REVISED	FINCH
REV	DATE	DESCRIPTION	APPR

ENGR	PEV
DRAWN	MJ
CHECKED	PEV

NTS	SR-MT-E-1014	1 OF 1
SCALE	STANDARD NO.	SHEET NO.