

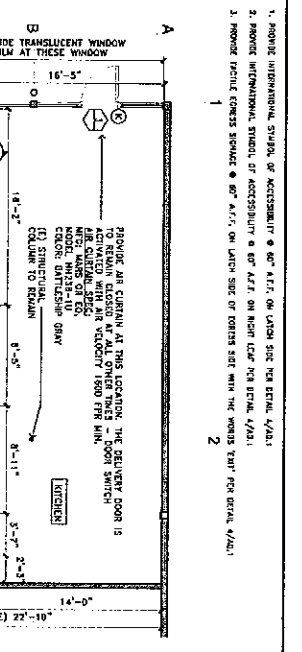
DOOR SCHEDULE

NO.	TYPE	LOCATION	SIZE	THICKNESS	MATERIAL	FINISH	REMARKS
1	DOOR	STORAGE ENTRANCE	3'-0" X 7'-0"	1 1/2"	WOOD	SS	
2	DOOR	STORAGE ENTRANCE	3'-0" X 7'-0"	1 1/2"	WOOD	SS	
3	DOOR	STORAGE ENTRANCE	3'-0" X 7'-0"	1 1/2"	WOOD	SS	
4	DOOR	STORAGE ENTRANCE	3'-0" X 7'-0"	1 1/2"	WOOD	SS	
5	DOOR	RESTROOM	3'-0" X 7'-0"	1 1/2"	WOOD	SS	
6	DOOR	RESTROOM	3'-0" X 7'-0"	1 1/2"	WOOD	SS	
7	DOOR	RESTROOM	3'-0" X 7'-0"	1 1/2"	WOOD	SS	
8	DOOR	RESTROOM	3'-0" X 7'-0"	1 1/2"	WOOD	SS	
9	DOOR	RESTROOM	3'-0" X 7'-0"	1 1/2"	WOOD	SS	
10	DOOR	RESTROOM	3'-0" X 7'-0"	1 1/2"	WOOD	SS	
11	DOOR	RESTROOM	3'-0" X 7'-0"	1 1/2"	WOOD	SS	
12	DOOR	RESTROOM	3'-0" X 7'-0"	1 1/2"	WOOD	SS	
13	DOOR	RESTROOM	3'-0" X 7'-0"	1 1/2"	WOOD	SS	

1. PROVIDE INTERVENTIONAL STRONG OF ACCESSIBILITY AT 67" A.F.F. ON LATCH SIDE PER DETAIL 4/20.1
 2. PROVIDE INTERVENTIONAL STRONG OF ACCESSIBILITY AT 67" A.F.F. ON HIGH LATCH PER DETAIL 4/20.1
 3. PROVIDE FRUITFUL ACCESS SQUARE AT 67" A.F.F. ON LATCH SIDE OF DOORS SET WITH THE WOODS TYP. PER DETAIL 4/20.1

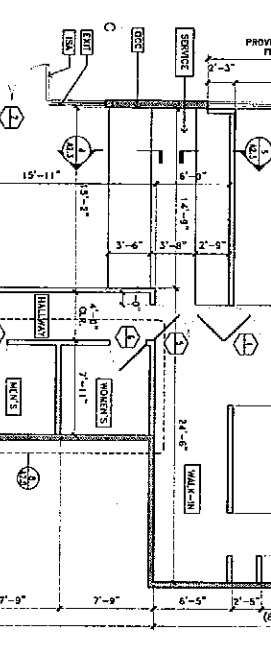
DOOR SCHEDULE

NO.	TYPE	LOCATION	SIZE	THICKNESS	MATERIAL	FINISH	REMARKS
1	DOOR	STORAGE ENTRANCE	3'-0" X 7'-0"	1 1/2"	WOOD	SS	
2	DOOR	STORAGE ENTRANCE	3'-0" X 7'-0"	1 1/2"	WOOD	SS	
3	DOOR	STORAGE ENTRANCE	3'-0" X 7'-0"	1 1/2"	WOOD	SS	
4	DOOR	STORAGE ENTRANCE	3'-0" X 7'-0"	1 1/2"	WOOD	SS	
5	DOOR	RESTROOM	3'-0" X 7'-0"	1 1/2"	WOOD	SS	
6	DOOR	RESTROOM	3'-0" X 7'-0"	1 1/2"	WOOD	SS	
7	DOOR	RESTROOM	3'-0" X 7'-0"	1 1/2"	WOOD	SS	
8	DOOR	RESTROOM	3'-0" X 7'-0"	1 1/2"	WOOD	SS	
9	DOOR	RESTROOM	3'-0" X 7'-0"	1 1/2"	WOOD	SS	
10	DOOR	RESTROOM	3'-0" X 7'-0"	1 1/2"	WOOD	SS	
11	DOOR	RESTROOM	3'-0" X 7'-0"	1 1/2"	WOOD	SS	
12	DOOR	RESTROOM	3'-0" X 7'-0"	1 1/2"	WOOD	SS	
13	DOOR	RESTROOM	3'-0" X 7'-0"	1 1/2"	WOOD	SS	



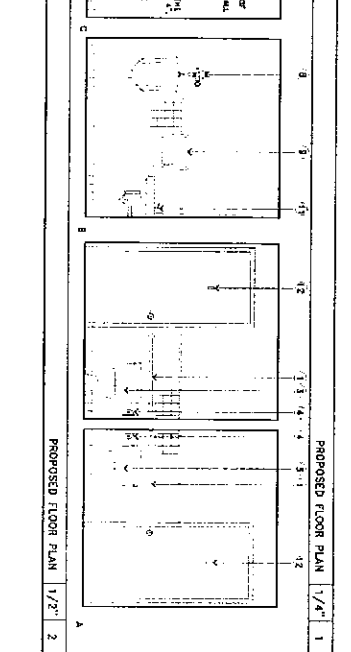
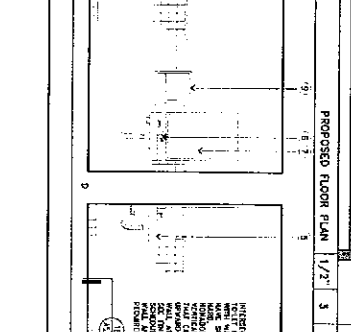
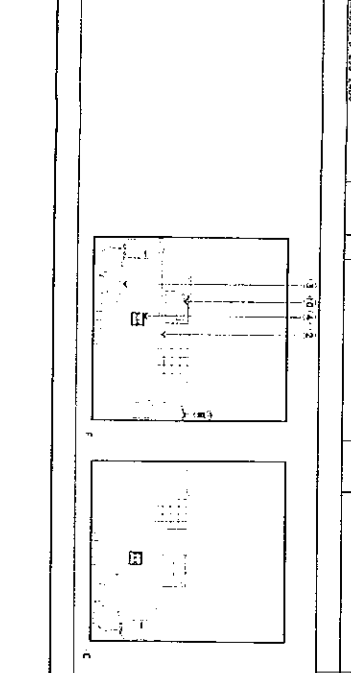
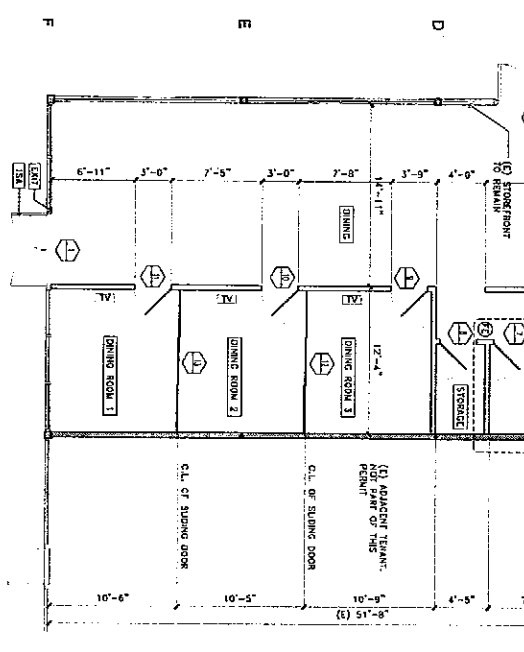
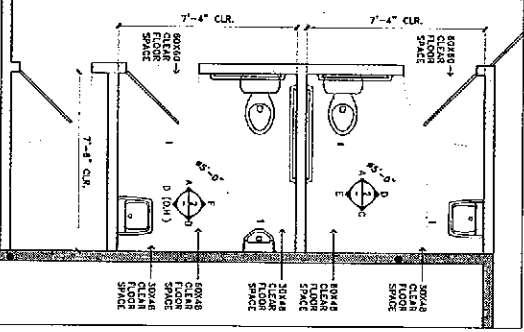
1. PROVIDE INTERVENTIONAL STRONG OF ACCESSIBILITY AT 67" A.F.F. ON LATCH SIDE PER DETAIL 4/20.1
 2. PROVIDE INTERVENTIONAL STRONG OF ACCESSIBILITY AT 67" A.F.F. ON HIGH LATCH PER DETAIL 4/20.1
 3. PROVIDE FRUITFUL ACCESS SQUARE AT 67" A.F.F. ON LATCH SIDE OF DOORS SET WITH THE WOODS TYP. PER DETAIL 4/20.1

1. PROVIDE INTERVENTIONAL STRONG OF ACCESSIBILITY AT 67" A.F.F. ON LATCH SIDE PER DETAIL 4/20.1
 2. PROVIDE INTERVENTIONAL STRONG OF ACCESSIBILITY AT 67" A.F.F. ON HIGH LATCH PER DETAIL 4/20.1
 3. PROVIDE FRUITFUL ACCESS SQUARE AT 67" A.F.F. ON LATCH SIDE OF DOORS SET WITH THE WOODS TYP. PER DETAIL 4/20.1



RESTROOM FIXTURE SCHEDULE

NO.	DESCRIPTION	FINISH	REMARKS
1	W.C. BOWL	SS	1. SEE SCHEDULE 4.1 AND 4.2 FOR FINISH 2. PROVIDE NEURAL INSULATION FOR HOT WATER AND SHOWER PANELS
2	W.C. BOWL	SS	1. SEE SCHEDULE 4.1 AND 4.2 FOR FINISH 2. PROVIDE NEURAL INSULATION FOR HOT WATER AND SHOWER PANELS
3	W.C. BOWL	SS	1. SEE SCHEDULE 4.1 AND 4.2 FOR FINISH 2. PROVIDE NEURAL INSULATION FOR HOT WATER AND SHOWER PANELS
4	W.C. BOWL	SS	1. SEE SCHEDULE 4.1 AND 4.2 FOR FINISH 2. PROVIDE NEURAL INSULATION FOR HOT WATER AND SHOWER PANELS
5	W.C. BOWL	SS	1. SEE SCHEDULE 4.1 AND 4.2 FOR FINISH 2. PROVIDE NEURAL INSULATION FOR HOT WATER AND SHOWER PANELS
6	W.C. BOWL	SS	1. SEE SCHEDULE 4.1 AND 4.2 FOR FINISH 2. PROVIDE NEURAL INSULATION FOR HOT WATER AND SHOWER PANELS
7	W.C. BOWL	SS	1. SEE SCHEDULE 4.1 AND 4.2 FOR FINISH 2. PROVIDE NEURAL INSULATION FOR HOT WATER AND SHOWER PANELS



PROJECT: 15-3333
 PROPOSED FLOOR PLAN
 A.I.D.
 Copyright 2015, Studio 02, Inc.

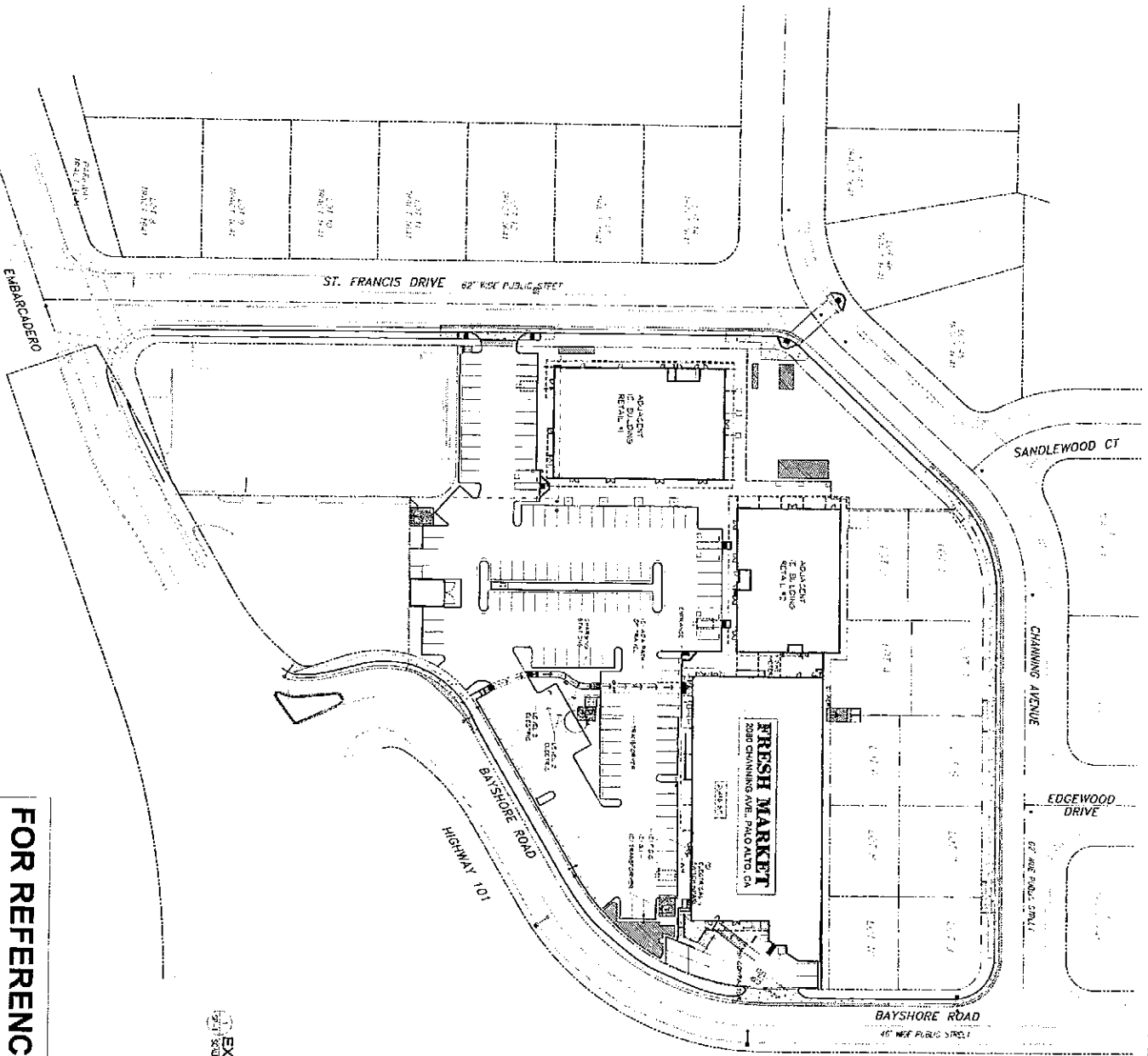
TENANT IMPROVEMENT
CHEF ZHAO'S KITCHEN
 EDGEWOOD PLAZA SHOPPING CENTER
 2180 WEST BAYSHORE ROAD, SUITE 120
 PALO ALTO, CA 94303



05.01.13 ISSUED FOR PLAN CHECK

FOR REFERENCE USE ONLY

EXISTING SITE PLAN



LITTLE
 CONSULTING
 1000 CHANNING AVE. PALO ALTO, CA
 650.962.3300
 WWW.LITTLECONSULTING.COM

THE FRESH MARKET
 2000 CHANNING AVE. PALO ALTO, CA
 650.962.3300

2nd Phase
 Submittal
 08/18/12

Honey Moon
 JC

EXISTING
 SITE PLAN
 SP-1