



GOSTANFORD.COM • #GOSTANFORD



2015-16 SCHEDULE AND RESULTS

NOVEMBER

7	Academy of Art (Ex.)	W, 81-48
13	at UC Davis	W, 74-45
15	at Gonzaga	W, 65-48
21	#22/20 George Washington	W, 84-63
23	Santa Clara	L, 61-58
27	vs. Missouri State ⁽¹⁾	W, 82-65
28	vs. Dayton ⁽¹⁾	W, 74-66
29	vs. Purdue ⁽¹⁾	W, 71-65 (OT)

DECEMBER

13	at #5/6 Texas (ESPN)	L, 77-69
16	#14/16 Tennessee (ESPN)	W, 69-55
19	Cornell	W, 93-38
22	CSU Bakersfield	W, 83-41
28	Chattanooga	W, 73-30

JANUARY

2	at Arizona * (P12N)	W, 59-34
4	at #14/21 Arizona State * (P12N)	L, 49-31
8	Utah *	7 p.m.
10	Colorado * (P12N)	noon
15	at Oregon * (P12N)	6 p.m.
17	at Oregon State * (P12N)	6 p.m.
22	at USC * (P12N)	8 p.m.
24	at UCLA * (P12N)	6 p.m.
29	Washington * (P12N)	8 p.m.
31	Washington State * (P12N)	noon

FEBRUARY

2	California * (P12N)	7 p.m.
5	at California * (P12N)	7 p.m.
12	Arizona * (P12N)	7:30 p.m.
14	Arizona State * (P12N)	6 p.m.
19	at Colorado * (P12N)	7 p.m.
21	at Utah * (P12N)	1 p.m.
26	Oregon State * (P12N)	8 p.m.
28	Oregon * (P12N)	11 a.m.

MARCH

3-6	Pac-12 Tournament ⁽²⁾	TBD
-----	----------------------------------	-----

(1) - Gulf Coast Showcase; Estero, Fla.
 (2) - Pac-12 Tournament; Seattle, Wash.
 * - Pac-12 game;

All times Pacific and subject to change;

Home games in Bold;

[#/#] - Indicates national ranking (AP/USA Today)

(P12N) - Game televised on Pac-12 Networks,

(ESPN/ESPN) - Game televised on ESPN family of networks

Athletic Communications

Assistant Director John Cantalupi
 Cell Phone (650) 924-8304
 E-Mail johncan@stanford.edu

THE GAME: No. 9/13 Stanford (11-3, 1-1) begins its home conference schedule when it hosts Utah (10-3, 2-0) in Maples Pavilion on Friday, Jan. 8 at 7 p.m.

THE RUNDOWN: Stanford split its first two conference games for the first time since 2005-06 ... It was held under 30 percent shooting for only the 11th time since 1988-89 on Monday at ASU ... The Cardinal is 59-4 in the month of January over the past seven seasons and 69-3 in Pac-12 home games since 2007-08 ... Stanford is No. 3 in the country in RPI and has played the nation's fourth-toughest schedule ... Stanford is without a senior starter for the first time since the 2002-03 season ... The Cardinal leads the nation in field goal percentage defense (.300) and is fifth in blocks per game (6.4) ... Stanford's opponents have put up 15.1 points less than their season scoring average when facing the Cardinal ... Stanford has tied a school record by holding five straight opponents under 50 points ... Lili Thompson is 17 points away from 1,000 in her career ... Erica McCall entered the season with two career double-doubles and is eighth in the nation with eight already this year ... Kaylee Johnson is averaging 7.7 points on 78.3 percent shooting in Stanford's last six games after averaging 1.1 points while shooting just 22.2 percent from the floor in the Cardinal's first eight ... Alanna Smith is scoring 10.2 points in Stanford's last five after accounting for 6.3 per game in the team's first nine ... Tara VanDerveer is 36 victories away from joining Pat Summitt as the only NCAA women's basketball coaches with 1,000 career wins ... The Cardinal is 988-307 all-time and is 12 wins shy of the exclusive 1,000-victory club.

STANFORD AT A GLANCE

Game 15

Overall Record	11-3
Pac-12 Record	1-1
Home Record	5-1
Road Record	3-2
Neutral Record	3-0

HEAD COACH TARA VANDERVEER

Stanford Record (30th year).....	812-169
Career Record (37th year)	964-220
All-Time vs. Utah	18-0

SERIES HISTORY

All-Time vs. Utah	18-0
At Stanford.....	7-0
At Utah	10-0
Streak.....	Stanford, 18
Last Stanford Win	1/5/15 (55-44 @ STAN)
Last Utah Win	N/A

VS. UTAH: Stanford is 18-0 all-time against Utah dating back to the first meeting on Jan. 13, 1986. This will be the seventh games between the two schools as conference foes. Stanford has won those previous six matchups by an average of 20.0 points. In the only meeting last season, Amber Orange scored 13 of her game-high 17 in the second half and grabbed seven rebounds, Lili Thompson scored 14 to go along with five rebounds and three assists and No. 15 Stanford won in Maples Pavilion, 55-44 to start its Pac-12 schedule 2-0.

STANFORD PROBABLE STARTERS

No.	Player	Pos.	Ht.	Yr.	PPG	RPG	APG
10	Briana Roberson	G	5-7	Jr.	8.1	2.8	2.7
1	Lili Thompson	G	5-7	Jr.	15.5	4.1	4.6
44	Karlie Samuelson	G	6-0	Jr.	8.7	3.4	1.6
32	Kailee Johnson	F	6-3	Jr.	2.4	4.0	0.5 (BPG)
24	Erica McCall	F	6-3	Jr.	13.1	9.3	2.1 (BPG)

STANFORD OFF THE BENCH

No.	Player	Pos.	Ht.	Yr.	PPG	RPG	APG
00	Alex Green	G	5-6	RS Sr.	0.2	0.8	0.5
2	Shannon Coffee	C	6-5	Fr.	2.1	1.3	0.1
5	Kaylee Johnson	F	6-3	So.	3.9	5.3	1.4 (BPG)
11	Alanna Smith	F	6-3	Fr.	7.7	2.9	0.9 (BPG)
12	Brittany McPhee	G	6-0	So.	6.4	3.1	0.6
13	Marta Sniezek	G	5-8	Fr.	2.4	1.9	1.8
22	Alexa Romano	G	5-10	Fr.	0.7	0.4	0.4
25	Kiran Lakhian	G	6-0	Sr.	1.4	0.9	0.1
34	Tess Picknell	C	6-5	Sr.	1.0	1.6	1.0 (BPG)

QUICK FACTS

The University

Location Stanford, Calif.
 Founded..... 1891
 Enrollment..... 16, 795 (7,019 undergraduate)
 Nickname..... Cardinal
 Colors..... Cardinal and White
 Affiliation NCAA Division I
 Conference Pac-12
 President John Hennessy
 Provost..... John Etchemendy
 Director of Athletics..... Bernard Muir
 Faculty Representative Pat Jones
 Senior Women's Administrator..... Beth Goode
 Athletic Department Phone 650-723-4591
 Ticket Office Phone 800-STANFORD
 Home Facility..... Maples Pavilion
 Capacity 7,233
 Web Site www.gostanford.com

Stanford Women's Basketball History

First Year 1974-75 (41 seasons)
 All-Time Record 988-307 (.763)
 All-Time Pac-12 (since 1986-87) 458-66 (.874)
 NCAA Championships 2 (1990, 1992)
 NCAA Tournament Appearances 29 (77-27)
 Last NCAA Tournament Appearance 2015
 NCAA Final Four Appearances 12
 Last NCAA Final Four Appearance 2014

Staff Information

Head Coach Tara VanDerveer (30th season)
 Alma Mater Indiana, 1975
 Stanford Record 812-169/29+ seasons
 Career Record..... 964-220/36+ seasons
 Assoc. Head Coach Amy Tucker (31st season)
 Alma Mater Ohio State, 1982
 Assistant Coach Kate Paye (ninth season)
 Alma Mater Stanford, 1995
 Assistant Coach Tempie Brown (third season)
 Alma Mater Michigan, 1990
 Dir. of Operations Eileen Roche (Ohio Wesleyan '81)
 Video Coordinator Hana Potter (Washington St. '14)
 Athletic Trainer Katelin Knox (Santa Clara '09)
 Sports Performance Brittany Keil (Holy Cross '07)
 Administrative Associate DeeDee Zawaydeh
 Basketball Office Phone..... (650) 723-0284

Team Information

Letterwinners Returning/Lost9/6
 Starters Returning/Lost3/2
 Newcomers..... 5
 2013-14 Record.....26-10
 Home14-3
 Away8-5
 Neutral.....4-2
 2013-14 Conference Record13-5
 Finisht3rd

CATCHING YOU UP »

- Stanford split its opening Pac-12 weekend in Arizona, beating the Wildcats on Saturday, 59-34, before losing to No. 14 Arizona State on Monday, 49-31.
- It's the first time since 2005-06 that the Cardinal has lost one of its first two conference games. That season, Stanford won at Washington State (75-56) on Dec. 20 and then dropped a decision at Washington (77-72) two days later.
- Stanford's defense was strong, limiting Arizona and Arizona State to 41.5 combined points on 25.9 percent shooting, but the Sun Devils did the Cardinal one better on Monday night.
- The Cardinal's 31 points were the fewest in program history, one shy of the 32 it scored against No. 16 Missouri at the Dial Classic in Miami on Jan. 2, 1984.
- At Arizona on Saturday, Stanford held that program to lows for a Pac-12 game in both points and field goal percentage (.208). The 34 points allowed also tied a Stanford record for fewest allowed in a Pac-12 game, matching the same total from a 60-34 win against Washington State on Feb. 8, 2007.

SUN DEVIL STRUGGLES »

- Arizona State has won three of last four against Stanford, including each regular-season meeting the past two years. The Sun Devils are the first Pac-12 team to beat the Cardinal in three straight regular-season games since 1988.
- Stanford's 25.6 percent shooting at ASU was its lowest in a conference game since 1988-89. Game-by-game records from the first two years of Pac-12 women's basketball (1986-87 and 1987-88) are not available.
- Arizona State is responsible for three of the Cardinal's 11 games shooting less than 30 percent since 1988-89, also accomplishing it in 2003-04 and 2011-12. Tennessee (2014-15), Chattanooga (2014-15), Connecticut (2009-10 and 2012-13), UCLA (2007-08), Cal (2006-07), Maine (1998-99) and Arizona (1992-93) are the others.
- Stanford's 18-point loss was its largest in conference action since a 73-53 defeat to the Sun Devils on Feb. 7, 2004.
- Monday also marked the second time since 1988-89 that Stanford has had a game without a double-digit scorer, with the other coming last Dec. 17 at Chattanooga.

SETTING THE STAGE »

- Stanford is looking to avoid its third two-game losing streak since the start of last year. The Cardinal has dropped back-to-back games just seven times since 2001-02.
- Beginning with the formation of Pac-12 women's basketball, Stanford has lost consecutive league games only 11 times, with four of those occurrences happening in that first season of 1986-87.
- Stanford has not been below .500 in conference play since 2001 when it started 1-3.
- Since 2007-08, the Cardinal sports a conference road record of 66-7 and a Pac-12 home record of 69-3.
- Over the past seven seasons, the Cardinal is 59-4 in the month of January.

STARTING LINEUP »

- In 2015-16, Stanford is without a senior starter for the first time in 13 seasons. The 2002-03 campaign was the last time the Cardinal didn't have a senior in its first five. That 13-player roster featured two juniors and 11 underclassmen.

SCHEDULE STRENGTH »

- In the official NCAA RPI released on Jan. 6 Stanford sits at No. 3 and has played one of the nation's toughest schedules. The NCAA's most recent in-depth RPI report from Jan. 3 has the Cardinal's sched-

2015-16 STANFORD ROSTER						
No.	Player	Pos.	Ht.	Yr.	Major	Hometown (High School)
00	Alex Green	G	5-6	RSr.	Science, Technology and Society	Dallas, Texas (Bishop Lynch)
1	Lili Thompson	G	5-7	Jr.	Science, Technology and Society	Mansfield, Texas (Timberview)
2	Shannon Coffee	F/C	6-5	Fr.	Undeclared	Dayton, Ohio (Centerville)
5	Kaylee Johnson	F	6-3	So.	Undeclared	Casper, Wyo. (Natrona County)
10	Briana Roberson	G	5-7	Jr.	Political Science	Fullerton, Calif. (Troy)
11	Alanna Smith	F	6-3	Fr.	Undeclared	Melbourne, Victoria, Australia (Wesley College)
12	Brittany McPhee	G	6-0	So.	Undeclared	Normandy Park, Wash. (Mount Rainier)
13	Marta Sniezek	G	5-8	Fr.	Undeclared	McLean, Va. (National Cathedral [D.C.]
22	Alexa Romano	G	5-10	Fr.	Undeclared	Albuquerque, N.M. (La Cueva)
24	Erica McCall	F	6-3	Jr.	Psychology	Bakersfield, Calif. (Ridgeview)
25	Kiran Lakhian	G	6-0	Sr.	Human Biology	Plano, Texas (Plano West)
32	Kailee Johnson	F	6-3	Jr.	Science, Technology and Society	Portland, Ore. (Central Catholic)
34	Tess Picknell	F/C	6-5	Sr.	Film and Media Studies	Medford, Ore. (South Medford)
44	Karlie Samuelson	G	6-0	Jr.	Human Biology	Huntington Beach, Calif. (Mater Dei)
TEMPIE Brown (TEMP-ee)		KIRAN LAKHIAN (KIER-in Lock-EE-in)		Marta SNEZEK (SNEEZE-ick)		
KAILIE Johnson (KY-lee)		BRIANA ROBERSON (Bre-ANN-ah RO-bur-son)		LILI Thompson (LEE-lee)		
KAYLEE Johnson (K-lee)		ALANNA Smith (uh-LAN-uh)		Tara VANDERVEER (TAR-uh van-DER-veer)		

STANFORD'S RECORD WHEN

Category	H	R	N	O
Scoring First	3-0	1-1	2-0	6-1
Opponent Scores First	2-1	2-1	1-0	5-2
Lead at Half	5-0	2-0	2-0	9-0
Trail at Half	0-0	0-2	1-0	1-2
Tied at Half	0-1	1-0	0-0	1-1
Overtime	0-0	0-0	1-0	1-0
vs. Top 25	2-0	0-2	0-0	2-2
Decided by 1-4 Points	0-1	0-0	0-0	0-1
Decided by 5-9 Points	0-0	0-1	2-0	2-1
Decided by 10+ Points	5-0	3-1	1-0	9-1
Scoring 100+	0-0	0-0	0-0	0-0
Scoring 90-99	1-0	0-0	0-0	1-0
Scoring 80-89	2-0	0-0	1-0	3-0
Scoring 70-79	1-0	1-0	2-0	4-0
Scoring 60-69	1-0	1-1	0-0	2-1
Scoring 50-59	0-1	1-0	0-0	1-1
Scoring 40-49	0-0	0-1	0-0	0-1
Opp. Scoring 90-99	0-0	0-0	0-0	0-0
Opp. Scoring 80-89	0-0	0-0	0-0	0-0
Opp. Scoring 70-79	0-0	0-1	0-0	0-1
Opp. Scoring 60-69	1-1	0-0	3-0	4-1
Opp. Scoring 50-59	1-0	0-0	0-0	1-0
Opp. 49 or Fewer	3-0	3-1	0-0	6-1
50%-plus FG Pct.	2-0	0-0	0-0	2-0
40-49.9% FG Pct.	3-0	2-1	2-0	7-1
39.9%-minus FG Pct.	0-1	1-1	1-0	2-2
Opp. 50%-plus FG Pct.	0-0	0-0	0-0	0-0
Opp. 40-49.9% FG Pct.	0-0	0-1	0-0	0-1
Opp. 39.9%-minus	5-1	3-1	3-0	11-2
Better FG% than Opp.	5-1	3-0	2-0	10-1
FG% is Equal	0-0	0-1	0-0	0-1
Opp. Better FG%	0-0	0-1	1-0	1-1
80%-plus FT Pct.	2-0	0-0	1-0	4-0
70-79% FT Pct.	0-0	0-1	0-0	0-1
69%-minus FT Pct.	3-1	3-1	1-0	7-2
Better FT% than Opp.	2-0	2-0	2-0	6-0
FT% is Equal	0-0	0-0	0-0	0-0
Opp. Better FT%	3-1	1-2	1-0	5-3
Outrebounding Opp.	4-1	2-0	2-0	9-1
Rebounds are Equal	0-0	0-0	0-0	0-0
Outrebounded by Opp.	1-0	1-2	0-0	2-2
Fewer TO than Opp.	3-0	2-0	0-0	5-0
Turnovers are Equal	0-0	0-0	0-0	0-0
More TO than Opp.	2-1	1-2	3-0	6-3
6 in Double Figures	0-0	0-0	0-0	0-0
5 in Double Figures	1-0	0-0	0-0	1-0
4 in Double Figures	2-0	1-0	0-0	3-0
3 in Double Figures	2-0	0-1	3-0	5-1
2 in Double Figures	0-1	2-0	0-0	2-1
1 in Double Figures	0-0	0-0	0-0	0-0
Bench Scores More	5-0	3-2	1-0	9-2
Opp. Bench Scrs. More	0-1	0-0	2-0	2-1
Wearing Black	0-0	3-2	0-0	3-2
Wearing White	5-0	0-0	2-0	7-0
Wearing Cardinal	0-0	0-0	1-0	1-0

ule as the fourth-toughest.

- Through games as of Jan. 6, Stanford's 14 opponents this year have the second-highest combined winning percentage in the country of .721 (129-50). Tennessee leads that category with opponents who have gone 115-40 (.742).
- As of Jan. 3 and that most recent RPI report, the Cardinal was 7-2 against the RPI top 100. Only Connecticut (7) and Notre Dame (7) have as many RPI top 100 wins.
- The average RPI of Stanford's opponents is 81. Eleven other schools have played a schedule in which its opponents average RPI is in the top 100 - BYU (96), Chattanooga (90), Connecticut (82), Dayton (63), Green Bay (93), Notre Dame (91), Ohio State (94), Rutgers (94), St. Joseph's (84), Tennessee (89) and Texas A&M (94).

APPLYING PRESSURE »

- The Cardinal has held 13 of 14 opponents below 40 percent shooting, six below 30 percent and one below 20 percent. Stanford leads the nation in field goal percentage defense (.300).
- Each of Stanford's 13 opponents (not counting the season opener at UC Davis) have been held below their season shooting average. Those foes have also put up 15.1 points less than their scoring average when facing Stanford.
- The Cardinal has forced six straight opponents to shoot less than 32 percent. In those last six games, Stanford is allowing just 41.2 points on 24.3 percent shooting (87-of-358).
- Stanford has also allowed less than 50 points in five straight games for only the second time in school history. In the 2012-13 season, the Cardinal each of Long Beach State (41), UC Davis (38), Gonzaga (41), Pacific (43) and South Carolina (49) under that point threshold. The program has never done it in six straight.
- One game after holding Chattanooga to 30 points on Dec. 28, the sixth-fewest for an opponent in program history, the Cardinal only surrendered 34 on Jan. 2 at Arizona, a total now tied for 10th in its record books. Stanford had never before held back-to-back opponents to less than 35 points.
- Stanford has held its opponent below 10 points 16 times in 56 quarters, or 28.6 percent of the time this season. It did so in eight straight quarters over games against CSU Bakersfield, Chattanooga and Arizona.
- Stanford is also fifth in the country in blocked shots per game (6.4) and has tallied seven or more blocks in a game six times this season after doing it five times all of last year. The Cardinal is on pace for 198 rejections this season, which would surpass the school record of 196 set in 2001-02.
- The Cardinal's 12 blocks against CSU Bakersfield on Dec. 22 are tied for second in Cardinal single-game history with games against New Mexico (2013), UC Davis (2012) and Massachusetts (2000). The school record of 13 was set on Feb. 3, 1989 against Arizona State.
- Its defensive prowess this season is a return to normal for the Cardinal. Last year's 37.0 percent field goal percentage defense mark was 43rd and the lowest in some time. Stanford hadn't surrendered a better percentage since 2005-06 (36th; .373) and hadn't finished a season ranked lower in that category since 2002-03 (57th; .384).
- From 2006-07 to 2013-14, the Cardinal did not finish outside the nation's top 15 in field goal percentage defense, capping that stretch with a 35.7 percent mark to check in 14th in the country in 2013-14.
- Stanford was the nation's best with a school record field goal percentage defense in 2012-13 (.316). The Cardinal was seventh in 2011-12 (.339), fifth in 2010-11 (.336), third in 2009-10 (.339), 13th in 2008-09 (.352), 11th in 2007-08 (.355) and sixth in 2006-07 (.346).

INSIDE AND OUTSIDE »

- Stanford scored 48 points in the paint in last season's opener against Boston College and then went 43 straight games without putting up 40 from inside.
- Since its loss to Texas on Dec. 13, the Cardinal has seemed to have found its flow on the block. Stanford has put up at least 40 points in the paint in three of its last six, going for 40 against Tennessee, 40

STANFORD POINTS ALLOWED

OPPONENT	AVERAGE PPG	VS. STANFORD	DIFFERENCE
Gonzaga	88.0	48	-40.0
George Washington	81.5	63	-18.5
Santa Clara	56.3	61	+4.7
Missouri State	72.2	65	-7.2
Dayton	76.8	66	-10.8
Purdue	66.0	65	-1.0
Texas	72.6	77	+4.4
Tennessee	66.0	55	-11.0
Cornell	61.3	38	-23.3
CSU Bakersfield	64.3	41	-23.3
Chattanooga	54.7	30	-24.7
Arizona	63.4	34	-29.4
Arizona State	64.9	49	-15.9
AVERAGE DIFFERENCE	888.0	692	-15.1

VANDERVEER'S HEAD COACHING CAREER

Year	School	Overall	Post.
1978-79	Idaho	17-8	
1979-80	Idaho	25-6	AIAW Championships
1980-81	Ohio State	17-15	---
1981-82	Ohio State	20-7	NCAA First Round
1982-83	Ohio State	23-5	---
1983-84	Ohio State	22-7	NCAA First Round
1984-85	Ohio State	28-3	NCAA Elite 8
1985-86	Stanford	13-15	---
1986-87	Stanford	14-14	---
1987-88	Stanford	27-5	NCAA Sweet 16
1988-89	Stanford	28-3	NCAA Elite 8
1989-90	Stanford	32-1	NCAA Champions
1990-91	Stanford	26-6	NCAA Final Four
1991-92	Stanford	30-3	NCAA Champions
1992-93	Stanford	26-6	NCAA Sweet 16
1993-94	Stanford	25-6	NCAA Elite 8
1994-95	Stanford	30-3	NCAA Final Four
1995-96	Stanford	---	USA Head Coach
1996-97	Stanford	34-2	NCAA Final Four
1997-98	Stanford	21-6	NCAA First Round
1998-99	Stanford	18-12	NCAA First Round
1999-00	Stanford	21-9	NCAA Second Round
2000-01	Stanford	19-11	NCAA Second Round
2001-02	Stanford	32-3	NCAA Sweet 16
2002-03	Stanford	27-5	NCAA Second Round
2003-04	Stanford	27-7	NCAA Elite 8
2004-05	Stanford	32-3	NCAA Elite 8
2005-06	Stanford	26-8	NCAA Elite 8
2006-07	Stanford	29-5	NCAA Second Round
2007-08	Stanford	35-4	NCAA Runner-Up
2008-09	Stanford	33-5	NCAA Final Four
2009-10	Stanford	36-2	NCAA Runner-Up
2010-11	Stanford	33-3	NCAA Final Four
2011-12	Stanford	35-2	NCAA Final Four
2012-13	Stanford	33-3	NCAA Sweet 16
2013-14	Stanford	33-4	NCAA Final Four
2014-15	Stanford	26-10	NCAA Sweet 16
2015-16	Stanford	11-3	

35 seasons **964-220****COACHING HIGHLIGHTS**

- Became the fifth Division I women's basketball coach to win 900 games when the Cardinal defeated Florida Gulf Coast, 83-59, in Puerto Vallarta, Mexico on Nov. 27, 2013.
- Possesses the third-highest career winning percentage among Division I women's basketball coaches, and has won two NCAA Championships and 25 regular-season conference titles (22 Pac-12, three B1G).

HONORS AND AWARDS

- Naismith Memorial Basketball Hall of Fame ('11)
- Women's Basketball Hall of Fame ('02)
- Two NCAA Championships (1990, 1992)
- Head of the 1996 United States Olympic Team
 - Gold Medal
- 60-0 record with USA Olympic Team in 1995-96
- 88-8 record (.917) as USA Basketball Head Coach
- 11 NCAA Final Fours
- 22 regular-season Pac-12 titles
- Four-time National Coach of the Year
- 14-time Pac-12 Coach of the Year

against CSU Bakersfield and 41 against Chattanooga.

- In the seven seasons prior to last year, Stanford had averaged 10.5 games with at least 40 points in the paint.
- Stanford is also 36th in the nation in percentage (.360) and 42nd in field goals made per game (7.5) from behind the arc.
- Stanford has made 10 or more 3-pointers four times in its first 14 games, including in three straight against Santa Clara, Missouri State and Dayton. All of last season, the Cardinal did that seven times in 36 total games.

TRACKING THOMPSON »

- Lili Thompson has scored 20 or more in five of Stanford's 14 games this season. She's had 10 career 20-point efforts, with eight coming in the month of November. The only non-November 20-point efforts came at USC on Jan. 25, 2015 (21) and on Dec. 13 at Texas (21).
- Her 26-point outing against Missouri State on Nov. 27 was her fourth consecutive, making the junior captain the first Cardinal guard to score 20 in four straight games since Candice Wiggins in 2008.
- She is also the first Stanford guard to start a season with 10 straight games in double figures scoring in a decade. Candice Wiggins scored 10 or more in all 34 games in 2005-06. That career-best streak was broken with nine points against CSU Bakersfield on Dec. 22.
- In 21 career November games, Thompson is averaging 15.0 points. The junior scores 10.4 points per game in her 64 other career games in December, January, February, March and April.
- At 15.5 points per game, the junior is 10th in the Pac-12 in scoring to go along with ninth in the league in assists (4.6). With 983 career points she is close to becoming the 36th Stanford player to reach 1,000 in a career.
- On Nov. 17, Thompson was named to the John R. Wooden Award Women's Preseason Top 30 and she was part of the Naismith Trophy Women's Watch List released on Dec. 9.
- She has also won a pair of Pac-12 Player of the Week awards this season (Nov. 24 and Dec. 21). Her most recent nod came after averaging 15.0 points, 4.0 rebounds and 5.0 assists in Stanford's wins over then-No. 14 Tennessee and Cornell.

FLYING HIGH »

- Erica McCall, who entered 2015-16 with just two career double-doubles, has quadrupled that total 14 games into her junior season.
- McCall has eight this season, including four straight to open the year. In the past decade, only Chiney Ogwumike has had a better start to a year for the Cardinal. Ogwumike also had four straight double-doubles to start the 2013-14 campaign. McCall's eight double-doubles are tied for eighth in the NCAA.
- Only five Stanford players have ever averaged a double-double for an entire season: Chiney Ogwumike (2012, 2013, 2014), Nnemkadi Ogwumike (2012), Nicole Powell (2004), Jeanne Ruark Hoff (1980) and Kathy Murphy (1978). McCall is currently averaging 13.1 points and 9.3 rebounds per outing.

ROUNDING INTO FORM »

- Kaylee Johnson has come on strong in Stanford's last five games, averaging 7.7 points on 78.3 percent shooting (18-of-23) to go along with 6.3 rebounds.
- The sophomore opened the year averaging 1.1 points and 4.5 rebounds while shooting just 22.2 percent from the floor in the Cardinal's first eight games.
- After scoring in double figures six times as a freshman, Johnson has now put up 10+ in three of the

VANDERVEER'S CAREER MILESTONES

Win #1	Dec. 1, 1978	Win #1 at Stanford	Nov. 22, 1985
	Idaho vs. Northern Montana, 70-68		vs. Hawaii, 68-65
Win #100	1982-83 (date N/A)	Win #100 at Stanford	Jan. 27, 1990
	Ohio State vs. Michigan, 74-60		vs. Arizona State, 90-63
Win #200	Feb. 12, 1988	Win #200 at Stanford	Dec. 18, 1993
	Stanford vs. Washington, 70-66		vs. SW Missouri St., 74-63
Win #300	Dec. 20, 1991	Win #300 at Stanford	Feb. 14, 1998
	Stanford vs. Southern Illinois, 82-63		vs. USC, 91-63
Win #400	March 16, 1995	Win #400 at Stanford	Nov. 30, 2002
	Stanford vs. UC Irvine (NCAA), 88-55		vs. Kansas State, 63-57
Win #500	Nov. 26, 2000	Win #500 at Stanford	Feb. 11, 2006
	Stanford vs. Pacific, 73-65		at California, 55-46
Win #600	March 20, 2004	Win #600 at Stanford	March 14, 2009
	Stanford vs. Missouri, 68-44		vs. UCLA, 73-47 (at Los Angeles, Calif.)
Win #700	Dec. 28, 2007	Win #700 at Stanford	Feb. 25, 2012
	Stanford vs. Washington State, 105-47		vs. Utah, 69-42
Win #800	Dec. 22, 2010	Win #800 at Stanford	March 21, 2015
	Stanford at San Francisco, 100-45		vs. CSUN, 73-60
Win #900	Nov. 27, 2013		
	Stanford vs. Florida Gulf Coast, 83-59 (Puerto Vallarta, Mexico)		

'LAST TIME' RANKINGS HISTORY (AP)

No. 1	December 24, 2012
No. 2	March 5, 2012
No. 3	February 3, 2014
No. 4	March 3, 2014
No. 5	November 24, 2014
No. 6	November 17, 2014
No. 7	December 15, 2014
No. 8	December 1, 2014
No. 9	January 4, 2016
No. 10	January 7, 2007
No. 11	December 28, 2015
No. 12	December 21, 2015
No. 13	November 23, 2015
No. 14	December 7, 2015
No. 15	December 14, 2015
No. 16	November 30, 2015
No. 17	December 26, 2000
No. 18	February 17, 2015
No. 19	February 23, 2015
No. 20	November 30, 1999
No. 21	January 2, 2001
No. 22	December 7, 1999
No. 23	November 23, 1999
No. 24	January 9, 2001
No. 25	February 29, 2000
Unranked	March 13, 2001

STANFORD WEEK-BY-WEEK

	AP	Coaches
Preseason	16	14
Week 2 (Nov. 16 & 17)	15	10
Week 3 (Nov. 23 & 24)	13	16
Week 4 (Nov. 30 & Dec. 1)	16	15
Week 5 (Dec. 7 & 8)	14	12
Week 6 (Dec. 14 & 15)	15	14
Week 7 (Dec. 21 & 22)	12	11
Week 8 (Dec. 28 & 29)	11	11
Week 9 (Jan. 4 & 5)	9	13

2014-15 INDIVIDUAL ACCOLADES

Naismith Trophy Women's Watch List

John R. Wooden Award Women's Preseason Top 30

Lili Thompson

Pac-12 Player of the Week

Lili Thompson - Dec. 21, 2015

Lili Thompson - Nov. 30, 2015

- In November 2013, she became just the fifth college women's basketball coach to win 900 career games. This past March she won her 800th game at Stanford, becoming the 10th college basketball coach – men's or women's – with that many victories at a single Division I school, Pat Summitt (Tennessee), Mike Krzyzewski (Duke), Geno Auriemma (Connecticut), Dean Smith (North Carolina), Adolph Rupp (Kentucky), Andy Landers (Georgia), Jim Boeheim (Syracuse), Robin Selvig (Montana) and Jim Phelan (Mount St. Mary's).
- One of the greatest leaders in any sport at any level, VanDerveer enters the 2015-16 season as the third-winningest coach in NCAA women's basketball history and is 36 victories away from joining Pat Summitt as the only coaches with 1,000 career wins.
- VanDerveer is the 16th Division I women's basketball coach in NCAA history to coach 30 or more seasons at the same institution and is one of five on the active coaching list. Pat Summitt (Tennessee; 1975-12), Harry Perretta (Villanova; 1979-15), Robin Selvig (Montana; 1979-15), Andy Landers (Georgia; 1980-15), Cindy Russo (FIU; 1978, 1981-15), Debbie Ryan (Virginia; 1978-11), Kay Yow (North Carolina St.; 1976-09), Wanda Watkins (Campbell; 1982-15), Kathleen Delaney-Smith (1983-15), Frank Bennett (Lipscomb; 1981-12), , Mike Granelli (Saint Peter's; 1973-04), Jody Conradt (Texas; 1977-07), Marian Washington (Kansas; 1974-04), Lynne Agee (UNC Greensboro; 1982-11), Shirley Walker (Alcorn; 1979-08) are the others.
- Off the court and on the gridiron, she served as Stanford football's honorary captain for its Oct. 3 home win over Arizona, 55-17.

PROGNOSTICATIONS »

- Stanford is No. 9 in the AP top 25 and No. 13 in the USA TODAY Coaches Poll.
- Stanford has appeared in the AP rankings a possible 485 times out of 700 total polls since 1977 (69.3 percent), with an average positioning of 6.9. It's been in the past 267 polls, the fourth-longest active streak behind Tennessee (543), Connecticut (421) and Duke (350). Stanford has also been in 283 consecutive coaches polls.
- The Cardinal's 485 all-time appearances in the AP top 25 are fourth behind Tennessee (686), Georgia (522) and Texas (491).
- Stanford was picked to finish second in the Pac-12 when the conference released the results of the preseason coaches' poll on Oct. 14. Those results snapped Stanford's 15-year streak at the top of the league's preseason rankings. Before that announcement, UCLA was the last team to finish atop the preseason poll, receiving the honor two straight years in 1998-99 and 1999-2000.
- The Cardinal, last year's Pac-12 Tournament champion, totaled 104 points. Oregon State, the league's 2015 regular-season winner, was the leading vote-getter, garnering 11 first-place votes and 121 points.

SO INTERNATIONAL »

- Stanford forward Erica McCall won her fourth gold medal representing the United States at the 2015 World University Games in Gwangju, South Korea in July.
- A United States co-captain, McCall finished the event tied for eighth overall in scoring (15.2), was eighth in rebounds (8.5), tied for third in blocks (1.8) and led all players in South Korea in field goal percentage, converting 37 of her 62 attempts from the floor (.597). Team USA went a perfect 6-0 and defeated its opponents by an average of nearly 22 points per game.
- In July, freshman Alanna Smith led Australia to a third-place finish and was named to the All-Star Five at the FIBA U19 Women's World Championship in Chekhov, Russia.
- The first international recruit in Stanford women's basketball history, Smith tied for 12th in the entire tournament in points per game (12.6), tied for 15th in rebounds (7.0), tied for third in blocks (2.7), tied for 23rd in steals (1.3) and led Australia in each of those categories.

ALWAYS LEARNING »

- Last year it was Mike D'Antoni, Joe Prunty, Jenny Boucek and others who helped Tara VanDerveer and her staff learn the intricacies of a more guard-oriented, fast-paced, pick-and-roll offense as Stanford moved away from the triangle for the first time since the 2002-03 season.
- This year it has been a give-and-take with the NBA Champion Golden State Warriors. The Warriors practiced at Stanford on Oct. 5 before preseason game in San Jose and assistant coach Kate Paye attended another Golden State practice in the East Bay. When the Warriors were on the road in San Diego, VanDerveer's sister and UCSD women's coach, Heidi VanDerveer, attended a practice.
- Warriors assistant coach and former Stanford star Jarron Collins » "It goes back to, men's team or women's team, basketball's basketball and we're all trying to improve. There's this synergy of just talking shop. We've had a level of success, obviously, and you just want to borrow from those that have achieved a certain level. Our practices are very open to coaches who want to come and watch and observe. It's pretty cool for us getting to interact with Coach VanDerveer."
- VanDerveer, who also asks former Stanford guard and now-Warriors sideline reporter Rosalyn Gold-Onwude of her observations on what Golden State is doing, says "it's kind of a little clinic happening every two or three nights on television."

THE LAST TIME STANFORD**BEAT A NO. 1 TEAM:**

11/17/14 vs. No. 1 Connecticut (88-86 [OT])

BEAT A TOP 25 TEAM:

12/16/15 vs. No. 14 Tennessee (69-55)

BEAT A TOP 5 TEAM:

11/17/14 vs. No. 1 Connecticut (88-86 [OT])

BEAT A TOP 25 TEAM ON THE ROAD:

2/26/15 at No. 7 Oregon State (69-58)

SCORED 100+ POINTS:

3/11/11 vs. Arizona (100)

ALLOWED 100+ POINTS:

12/27/00 at Oklahoma (102)

SCORED FEWER THAN 50 POINTS:

1/4/16 at Arizona State (31)

ALLOWED FEWER THAN 50 POINTS:

1/4/16 at Arizona State (49)

SCORED FEWER THAN 40 POINTS:

1/4/16 at Arizona State (31)

ALLOWED FEWER THAN 40 POINTS:

1/2/16 at Arizona (34)

SHOT 60+ PERCENT:

11/14/14 vs. Boston College (.649)

OPPONENT SHOT 59+ PERCENT:

12/16/10 at DePaul (.596)

SHOT LESS THAN 30 PERCENT:

1/4/16 at Arizona State (.256)

OPPONENT SHOT LESS THAN 30 PERCENT:

1/2/16 at Arizona (.208)

FIVE CARDINAL IN DOUBLE-FIGURES:

12/19/15 vs. Cornell

(E. McCall 12, A. Smith 12, K. Samuelson 11,
L. Thompson 11, Kaylee Johnson 10)**TWO PLAYERS WITH 20+ POINTS:**

11/15/15 at Gonzaga,

(E. McCall 23, L. Thompson 21)

THREE PLAYERS WITH 20+ POINTS:

1/23/15 at UCLA,

(B. Roberson 21, B. Samuelson 21, A. Orrange 20)

PLAYER SCORED 40+ POINTS:

12/20/11, Nnemkadi Ogumike vs. Tenn. (42)

PLAYER SCORED 30+ POINTS:

12/22/14, Bonnie Samuelson vs. UC Davis (30)

PLAYER MADE 10+ FIELD GOALS:

11/27/15, Lili Thompson vs. Missouri State (10)

PLAYER MADE 5+ 3-POINTERS:

11/29/15, Briana Roberson vs. Purdue (5)

PLAYER MADE 10+ FREE THROWS:

1/25/15, Lili Thompson at USC (12)

PLAYER HAD 10+ ASSISTS:

11/9/13, Amber Orrange at Boston College (10)

PLAYER HAD 15+ REBOUNDS:

2/2/15, Kaylee Johnson vs. Washington (17)

PLAYER HAD 5+ BLOCKED SHOTS:

12/13/15, Erica McCall at Texas (5)

PLAYER HAD 5+ STEALS:

3/8/15, Amber Orrange vs. California (6)

PLAYER HAD A DOUBLE-DOUBLE:

12/22/15, Erica McCall vs. CSUB (15 - 10)

TWO PLAYERS HAD A DOUBLE-DOUBLE:

3/30/14, Chiney Ogumike (29 pts, 15 reb)

and Mikaela Ruef (11 pts, 13 reb) vs. Penn St.

PLAYER HAD A TRIPLE-DOUBLE:

3/18/02, N. Powell vs. Tulane (16 pts, 10 reb, 10 ast)

STANFORD HIGHS/LOWS

Most Points.....	93 vs. Cornell (12/19/15)
Fewest Points.....	31 at Arizona State (1/4/16)
Most 1st Quarter Points.....	27 vs. Cornell (12/19/15)
Fewest 1st Quarter Points.....	7 at Arizona State (1/4/16)
Most 2nd Quarter Points.....	31 vs. George Washington (11/21/15)
Fewest 2nd Quarter Points.....	6 at Arizona State (1/4/16)
Most 3rd Quarter Points.....	31 at UC Davis (11/13/15)
Fewest 3rd Quarter Points.....	9 at Arizona State (1/4/16)
Most 4th Quarter Points.....	25 vs. Santa Clara (11/23/15)
Fewest 4th Quarter Points.....	9, two times [last at Arizona State (1/4/16)]
Best FG Pct.....	50.8% (32-63) vs. CSU Bakersfield (12/22/15)
Worst FG Pct.....	25.6% (11-43) at Arizona State (1/4/16)
Most 3-Pt. FGs Made.....	15 vs. Missouri State (11/27/15)
Fewest 3-Pt. FGs Made.....	1 at Arizona State (1/4/16)
Most 3-Pt. FGs Attempted.....	33 vs. Missouri State (11/27/15)
Fewest 3-Pt. FGs Attempted.....	9 at Arizona State (1/4/16)
Best 3-Pt. FG Pct. (min. five attempts).....	45.8% (11-24) vs. Dayton (11/28/15)
Worst 3-Pt. FG Pct.....	11.1% (1-9) at Arizona State (1/4/16)
Most Free Throws Made.....	25 vs. Purdue (11/29/15)
Fewest Free Throws Made.....	7 vs. Missouri State (11/27/15)
Most Free Throws Attempted.....	33 vs. CSU Bakersfield (12/22/15)
Fewest Free Throws Attempted.....	12, two times [last at Arizona State (1/4/16)]
Best Free Throw Pct. (min. five attempts).....	96.2% (25-26) vs. Purdue (11/29/15)
Worst Free Throw Pct.....	39.4% (13-33) vs. CSU Bakersfield (12/22/15)
Most Rebounds.....	61 vs. CSU Bakersfield (12/22/15)
Fewest Rebounds.....	29 at Texas (12/13/15)
Best Rebound Margin.....	+26 vs. Cornell (12/19/15)
Worst Rebound Margin.....	-15 at Texas (12/13/15)
Most Assists.....	22 vs. CSU Bakersfield (12/22/15)
Fewest Assists.....	8 at Arizona State (1/4/16)
Most Turnovers.....	26 vs. Santa Clara (11/23/15)
Fewest Turnovers.....	8 vs. Cornell (12/19/15)
Best Turnover Margin.....	+12 vs. Chattanooga (12/28/15)
Worst Turnover Margin.....	-13 vs. Santa Clara (11/23/15)
Most Blocked Shots.....	12 vs. CSU Bakersfield (12/22/15)
Fewest Blocked Shots.....	3, two times [last vs. Purdue (11/29/15)]
Most Steals.....	11 vs. Chattanooga (12/28/15)
Fewest Steals.....	3 vs. CSU Bakersfield (12/22/15)

OPPONENT HIGHS/LOWS

Most Points.....	77 by Texas (12/13/15)
Fewest Points.....	30 by Chattanooga (12/28/15)
Most 1st Quarter Points.....	24 by Dayton (11/28/15)
Fewest 1st Quarter Points.....	6 by Cornell (12/19/15)
Most 2nd Quarter Points.....	19 by Texas (12/13/15)
Fewest 2nd Quarter Points.....	6 by CSU Bakersfield (12/22/15)
Most 3rd Quarter Points.....	24 by Purdue (11/29/15)
Fewest 3rd Quarter Points.....	7, two times [last by Arizona (1/2/16)]
Most 4th Quarter Points.....	25 vs. Tennessee (12/16/15)
Fewest 4th Quarter Points.....	5 by Chattanooga (12/28/15)
Best FG Pct.....	42.4% (25-59) by Texas (12/13/15)
Worst FG Pct.....	19.1% (13-68) by CSU Bakersfield (12/22/15)
Most 3-Pt. FGs Made.....	9, three times [last by Purdue (11/29/15)]
Fewest 3-Pt. FGs Made.....	1, two times [last by Arizona (1/2/16)]
Most 3-Pt. FGs Attempted.....	29 by Dayton (11/28/15)
Fewest 3-Pt. FGs Attempted.....	10 by Arizona (1/2/16)
Most FTs Made.....	23 by Texas (12/13/15)
Fewest FTs Made.....	2 by Chattanooga (12/28/15)
Most FTs Attempted.....	30 by Texas (12/13/15)
Fewest FTs Attempted.....	2 by Chattanooga (12/28/15)
Most Rebounds.....	50 by George Washington (11/21/15)
Fewest Rebounds.....	28 by Cornell (12/19/15)
Most Assists.....	13, two times [last by Purdue (11/29/15)]
Fewest Assists.....	5, two times [last by Chattanooga (12/28/15)]
Most Turnovers.....	21, two times [last by Chattanooga (12/28/15)]
Fewest Turnovers.....	11, three times [last by CSU Bakersfield (12/22/15)]
Best Turnover Margin.....	+13 by Santa Clara (11/23/15)
Worst Turnover Margin.....	-12 by Chattanooga (12/28/15)
Most Blocked Shots.....	4, two times [last by George Washington (11/21/15)]
Fewest Blocked Shots.....	0, three times [last by CSU Bakersfield (12/22/15)]
Most Steals.....	15 by Santa Clara (11/23/15)
Fewest Steals.....	3 by Texas (12/13/15)

2015-16 Results

RECORD:	OVERALL	HOME	AWAY	NEUTRAL
ALL GAMES	11-3	5-1	3-2	3-0
CONFERENCE	1-1	0-0	1-1	0-0
NON-CONFERENCE	10-2	5-1	2-1	3-0

DATE	TIME	OPPONENT		SCORE	ATTEND	HIGH POINTS	HIGH REBOUNDS
11/13/15	7:30 p.m.	at UC Davis	W	74-45	3,366	(15) Roberson, Briana	(11) McCall, Erica
11/15/15	1:00 p.m.	at Gonzaga	W	65-48	6,000	(23) McCall, Erica	(13) McCall, Erica
11/21/15	12:00 p.m.	GEORGE WASHINGTON	W	84-63	2,854	(21) Thompson, Lili	(10) Johnson, Kaylee (10) McCall, Erica
11/23/15	7:00 p.m.	SANTA CLARA		58-61 L	2,668	(21) Thompson, Lili	(11) McCall, Erica
11/27/15	1:30 p.m.	# vs. Missouri State	W	82-65	1,006	(26) Thompson, Lili	(10), McCall, Erica
11/28/15	5:00 p.m.	# vs. Dayton	W	74-66	1,407	(22) Smith, Alanna	(9) McCall, Erica
11/29/15	7:30 p.m.	# vs. Purdue	Wot	71-65	1,417	(26) Roberson, Briana	(11) McCall, Erica
12/13/15	12:00 p.m.	at Texas		69-77 L	3,942	(21) Thompson, Lili	(13) McCall, Erica
12/16/15	6:00 p.m.	TENNESSEE	W	69-55	3,768	(19) Thompson, Lili	(10) McCall, Erica
12/19/15	2:00 p.m.	CORNELL	W	93-38	3,015	(12) McCall, Erica (12) Smith, Alanna	(11) Johnson, Kaylee
12/22/15	2:00 p.m.	CSU BAKERSFIELD	W	83-41	2,625	(15) McCall, Erica	(10) McCall, Erica
12/28/15	7:00 p.m.	CHATTANOOGA	W	73-30	3,410	(18) McCall, Erica	(8) McCall, Erica
1/2/16	3:00 p.m.	* at Arizona	W	59-34	1,491	(21) McPhee, Brittany	(7) Johnson, Kailee
1/4/16	6:00 p.m.	* at Arizona State		31-49 L	1,708	(7) Thompson, Lili	(4) Johnson, Kailee (4) Thompson, Lili

* - Pac-12 game

- Gulf Coast Showcase; Estero, Fla.

ATTENDANCE	GAMES	TOTALS	AVG/GAME
HOME	6	18,340	3,057
AWAY	5	16,507	3,301
NEUTRAL	3	3,830	1,277
TOTAL	14	38,677	2,763

2015-16 Team Game-by-Game

	Date	Score	W/L	---TOTAL---		--3-PTRS--		FT-FTA Pct		----REBOUNDS----				PF	A	TO	Blk	Stl	Pts	Avg
				FG-FGA	Pct	3FG-FGA	Pct		Pct	Off	Def	Tot	Avg							
UC Davis	11/13	74-45	W	13-55	.236	5-21	.238	14-20	.700	16	29	45	45.0	21	8	21	2	7	45	45.0
Stanford				27-71	.380	7-24	.292	13-21	.619	19	28	47	47.0	20	16	11	10	7	74	74.0
Gonzaga	11/15	65-48	W	18-58	.310	3-21	.143	9-20	.450	16	28	44	44.5	21	9	14	4	4	48	46.5
Stanford				23-57	.404	6-15	.400	13-24	.542	13	30	43	45.0	17	12	11	4	7	65	69.5
Geo. Washington	11/21	84-63	W	25-85	.294	9-23	.391	4-6	.667	24	26	50	46.3	14	6	14	4	5	63	52.0
Stanford				30-65	.462	9-20	.450	15-18	.833	10	36	46	45.3	10	16	12	8	9	84	74.3
Santa Clara	11/23	58-61	L	22-71	.310	1-16	.063	16-22	.727	23	20	43	45.5	16	9	13	2	15	61	54.2
Stanford				19-53	.358	10-32	.313	10-17	.588	16	29	45	45.2	21	13	26	7	5	58	70.2
Missouri State	11/27	82-65	W	26-73	.356	6-23	.261	7-10	.700	21	19	40	44.4	12	10	13	1	9	65	56.4
Stanford				30-65	.462	15-33	.455	7-12	.583	16	26	42	44.6	9	17	15	6	9	82	72.6
Dayton	11/28	74-66	W	26-66	.394	9-29	.310	5-7	.714	13	19	32	42.3	18	13	13	0	6	66	58.0
Stanford				25-52	.481	11-24	.458	13-16	.813	10	26	36	43.2	14	17	20	3	5	74	72.8
Purdue	11/29	71-65	Wot	24-62	.387	9-23	.391	8-12	.667	13	25	38	41.7	22	13	11	2	6	65	59.0
Stanford				19-55	.345	8-18	.444	25-26	.962	12	27	39	42.6	16	12	13	3	6	71	72.6
Texas	12/13	69-77	L	25-59	.424	4-12	.333	23-30	.767	16	28	44	42.0	16	11	13	3	3	77	61.2
Stanford				25-59	.424	8-21	.381	11-15	.733	8	21	29	40.9	24	13	15	5	6	69	72.1
Tennessee	12/16	69-55	W	20-63	.317	3-14	.214	12-17	.706	13	18	31	40.8	25	9	14	2	8	55	60.6
Stanford				24-48	.500	2-11	.182	19-30	.633	10	32	42	41.0	12	10	20	4	8	69	71.8
Cornell	12/19	93-38	W	14-62	.226	6-16	.375	4-12	.333	9	19	28	39.5	14	9	11	0	4	38	58.3
Stanford				31-63	.492	10-23	.435	21-24	.875	14	40	54	42.3	11	20	8	6	7	93	73.9
CSU Bakersfield	12/22	83-41	W	13-68	.191	5-24	.208	10-12	.833	12	24	36	39.2	27	5	11	0	7	41	56.7
Stanford				32-63	.508	6-19	.316	13-33	.394	18	43	61	44.0	14	22	14	12	3	83	74.7
Chattanooga	12/28	73-30	W	12-57	.211	4-17	.235	2-2	1.000	16	24	40	39.2	9	5	21	1	6	30	54.5
Stanford				30-70	.429	5-22	.227	8-13	.615	19	29	48	44.3	5	17	9	8	11	73	74.6
Arizona	1/2	59-34	W	11-53	.208	1-10	.100	11-10	.579	13	16	29	38.5	16	7	13	1	9	34	52.9
Stanford				19-43	.442	7-21	.333	14-22	.636	13	32	45	44.4	19	13	23	9	8	59	73.4
Arizona State	1/4	31-49	L	17-55	.309	6-15	.400	9-11	.818	20	21	41	38.6	16	12	14	3	10	49	52.6
Stanford				11-43	.256	1-9	.111	8-12	.667	13	19	32	43.5	14	8	17	5	8	31	70.4

**2015-16 Stanford Women's Basketball
Stanford Combined Team Statistics (as of Jan 04, 2016)
All games**

RECORD:	OVERALL	HOME	AWAY	NEUTRAL
ALL GAMES	11-3	5-1	3-2	3-0
CONFERENCE	1-1	0-0	1-1	0-0
NON-CONFERENCE	10-2	5-1	2-1	3-0

#	Player	gp-gs	min	avg	Total			3-Point		F-Throw		Rebounds				pf	dq	a	to	blk	stl	pts	avg
					fg-fga	fg%	3fg-fga	3fg%	ft-fa	ft%	off	def	tot	avg									
01	Thompson, Lili	14-12	408	29.1	68-180	.378	29-83	.349	52-61	.852	11	47	58	4.1	24	0	64	43	3	19	217	15.5	
24	McCall, Erica	14-14	429	30.6	82-160	.513	0-0	.000	19-33	.576	43	87	130	9.3	21	1	7	20	29	14	183	13.1	
44	Samuelson, Karlie	14-14	394	28.1	38-85	.447	28-69	.406	18-21	.857	14	34	48	3.4	26	0	22	14	3	15	122	8.7	
10	Roberson, Briana	14-14	359	25.6	38-105	.362	19-48	.396	18-25	.720	12	27	39	2.8	21	1	38	28	2	10	113	8.1	
11	Smith, Alanna	14-0	197	14.1	39-76	.513	14-36	.389	16-27	.593	14	27	41	2.9	29	0	4	22	12	2	108	7.7	
12	McPhee, Brittany	13-0	213	16.4	26-71	.366	10-33	.303	21-30	.700	11	29	40	3.1	15	1	8	23	2	6	83	6.4	
05	Johnson, Kaylee	14-7	213	15.2	20-32	.625	0-0	.000	15-29	.517	26	48	74	5.3	27	0	11	16	20	10	55	3.9	
32	Johnson, Kailee	12-7	224	18.7	9-32	.281	1-6	.167	10-15	.667	16	32	48	4.0	23	0	15	7	6	10	29	2.4	
13	Snizek, Marta	14-2	220	15.7	9-27	.333	0-5	.000	15-22	.682	5	21	26	1.9	9	0	25	23	0	11	33	2.4	
02	Coffee, Shannon	8-0	32	4.0	7-16	.438	0-2	.000	3-13	.231	2	8	10	1.3	1	0	1	4	1	0	17	2.1	
25	Lakhian, Kiran	8-0	33	4.1	4-9	.444	3-4	.750	0-0	.000	2	5	7	0.9	0	0	1	2	2	1	11	1.4	
34	Picknell, Tess	8-0	36	4.5	3-4	.750	0-0	.000	2-5	.400	5	8	13	1.6	5	0	4	4	8	0	8	1.0	
22	Romano, Alexa	7-0	34	4.9	2-6	.333	1-3	.333	0-0	.000	1	2	3	0.4	1	0	3	1	2	0	5	0.7	
00	Green, Alex	6-0	34	5.7	0-4	.000	0-3	.000	1-2	.500	2	3	5	0.8	4	0	3	2	0	1	1	0.2	
	Team										27	40	67				5						
	Total.....	14	2826		345-807	.428	105-292	.360	190-283	.671	191	418	609	43.5	206	3	206	214	90	99	985	70.4	
	Opponents.....	14	2825		266-887	.300	71-264	.269	134-200	.670	225	316	541	38.6	247	-	126	196	25	99	737	52.6	

TEAM STATISTICS	STAN	OPP	Date	Opponent	Score	Att.
SCORING	985	737	11/13/15	at UC Davis	w 74-45	3366
Points per game	70.4	52.6	11/15/15	at Gonzaga	w 65-48	6000
Scoring margin	+17.7	-	11/21/15	GEORGE WASHINGTON	w 84-63	2854
FIELD GOALS-ATT	345-807	266-887	11/23/15	SANTA CLARA	L 58-61	2668
Field goal pct	.428	.300	# 11/27/15	vs Missouri State	w 82-65	1006
3 POINT FG-ATT	105-292	71-264	# 11/28/15	vs Dayton	w 74-66	1407
3-point FG pct	.360	.269	# 11/29/15	vs Purdue	Wot 71-65	1417
3-pt FG made per game	7.5	5.1	12/13/15	at Texas	L 69-77	3942
FREE THROWS-ATT	190-283	134-200	12/16/15	TENNESSEE	w 69-55	3768
Free throw pct	.671	.670	12/19/15	CORNELL	w 93-38	3015
F-Throws made per game	13.6	9.6	12/22/15	CSU BAKERSFIELD	w 83-41	2625
REBOUNDS	609	541	12/28/15	CHATTANOOGA	w 73-30	3410
Rebounds per game	43.5	38.6	* 1/2/16	at Arizona	w 59-34	1491
Rebounding margin	+4.9	-	* 1/4/16	at Arizona State	L 31-49	1708
ASSISTS	206	126				
Assists per game	14.7	9.0				
TURNOVERS	214	196				
Turnovers per game	15.3	14.0				
Turnover margin	-1.3	-				
Assist/turnover ratio	1.0	0.6				
STEALS	99	99				
Steals per game	7.1	7.1				
BLOCKS	90	25				
Blocks per game	6.4	1.8				
ATTENDANCE	18340	20337				
Home games-Avg/Game	6-3057	5-3301				
Neutral site-Avg/Game	-	3-1277				

* = Pac-12 game

- Gulf Coast Showcase; Estero, Fla.

Score by Periods	1st	2nd	3rd	4th	OT	Totals
Stanford	228	253	230	262	12	985
Opponents	183	160	200	188	6	737

POINTS-REBOUNDS-ASSISTS

OPPONENT	#00 AG	#1 LT	#2 SC	#5 KJ	#10 BR	#11 AS	#12 BM	#13 MS	#22 AR	#24 EM	#25 KL	#32 KJ	#34 TP	#44 KS
UC Davis	DNP	10-3-2	5-1-0	0-5-1	15-4-3	13-1-0	7-4-1	2-2-4	0-0-0	10-11-0	0-1-0	3-4-1	0-2-2	9-3-2
Gonzaga	DNP	21-2-3	DNP	1-10-2	3-2-5	4-1-0	6-5-1	0-0-0	DNP	23-13-0	DNP	0-2-0	DNP	7-3-1
GW	DNP	21-5-6	2-0-0	3-10-0	4-3-4	10-1-0	0-6-0	6-2-2	3-0-0	18-10-2	0-0-0	DNP	0-0-1	17-3-1
Santa Clara	DNP	21-4-6	2-0-0	0-2-1	9-6-3	2-6-1	4-6-0	0-0-1	DNP	12-11-0	DNP	DNP	0-0-0	8-3-1
Missouri State	DNP	26-3-6	0-1-0	5-8-0	18-2-3	0-3-0	5-3-1	4-2-3	0-0-0	9-10-1	0-0-0	0-2-1	DNP	15-5-2
Dayton	DNP	19-4-7	DNP	0-1-0	5-3-1	22-4-1	2-1-0	0-2-1	DNP	16-9-2	DNP	2-2-3	DNP	8-4-2
Purdue	DNP	17-6-5	DNP	0-0-1	26-5-1	0-3-1	7-2-0	0-1-0	DNP	12-11-2	DNP	3-4-1	DNP	6-2-1
Texas	0-0-0	21-5-6	DNP	0-0-0	7-1-3	2-3-1	12-2-1	3-0-0	DNP	14-13-0	DNP	4-3-2	DNP	6-1-0
Tennessee	DNP	19-7-4	DNP	10-5-0	2-2-1	4-1-0	1-4-0	9-3-4	DNP	14-10-0	DNP	3-2-0	DNP	7-3-1
Cornell	0-1-1	11-3-4	2-4-1	10-11-3	9-3-3	12-3-0	9-1-0	4-5-1	2-2-1	12-7-0	9-2-1	2-6-2	0-2-0	11-4-3
CSUB	1-1-1	9-4-7	4-4-0	11-7-1	2-3-3	14-3-0	5-4-2	1-4-4	0-0-0	15-10-0	2-2-0	2-8-2	4-6-0	13-5-2
Chattanooga	0-2-1	11-5-3	2-0-0	8-6-0	9-1-5	7-7-0	DNP	0-0-1	0-0-2	18-8-0	0-1-0	4-4-1	4-2-0	10-3-4
Arizona	0-1-0	4-3-4	0-0-0	3-6-1	3-1-2	16-4-0	21-1-1	4-4-3	0-1-0	6-4-0	0-1-0	2-7-1	0-1-0	0-6-1
Arizona State	0-0-0	7-4-1	DNP	4-3-1	1-3-1	2-1-0	4-1-1	0-1-1	DNP	4-3-0	0-0-0	4-4-1	0-0-1	5-3-1

GAME-BY-GAME STARTERS

OPPONENT	DATE	SCORE	W/L	1	2	3	4	5
UC Davis	11/13	74-45	W	Snizek	Roberson	Samuelson	Kaylee Johnson	McCall
Gonzaga	11/15	65-48	W	Snizek	Roberson	Samuelson	Kaylee Johnson	McCall
GW	11/21	84-63	W	Roberson	Thompson	Samuelson	Kaylee Johnson	McCall
Santa Clara	11/23	58-61	L	Roberson	Thompson	Samuelson	Kaylee Johnson	McCall
Missouri State	11/27	82-65	W	Roberson	Thompson	Samuelson	Kaylee Johnson	McCall
Dayton	11/28	74-66	W	Roberson	Thompson	Samuelson	Kaylee Johnson	McCall
Purdue	11/29	71-65	Wot	Roberson	Thompson	Samuelson	Kaylee Johnson	McCall
Texas	12/13	69-77	L	Roberson	Thompson	Samuelson	Kailee Johnson	McCall
Tennessee	12/16	69-55	W	Roberson	Thompson	Samuelson	Kailee Johnson	McCall
Cornell	12/19	93-38	W	Roberson	Thompson	Samuelson	Kailee Johnson	McCall
CSUB	12/22	83-41	W	Roberson	Thompson	Samuelson	Kailee Johnson	McCall
Chattanooga	12/28	73-30	W	Roberson	Thompson	Samuelson	Kailee Johnson	McCall
Arizona	1/2	59-34	W	Roberson	Thompson	Samuelson	Kailee Johnson	McCall
Arizona State	1/4	31-49	L	Roberson	Thompson	Samuelson	Kailee Johnson	McCall

**2015-16 Stanford Women's Basketball
Stanford Season/Career Statistics (as of Jan 04, 2016)
All games**

SEASON STATISTICS

CAREER STATISTICS

SUMMARY	gp-gs	min/g	fg%	3fg%	ft%	r/g	a/g	stl	blk	pts/g	gp-gs	min/g	fg%	3fg%	ft%	r/g	a/g	stl	blk	pts/g
Thompson, Lili	14-12	29.1	.378	.349	.852	4.1	4.6	19	3	15.5	85-78	27.9	.403	.383	.790	2.9	2.8	77	17	11.6
McCall, Erica	14-14	30.6	.513	.000	.576	9.3	0.5	14	29	13.1	86-34	16.5	.496	.000	.541	5.1	0.3	27	100	5.9
Samuelson, Karlie	14-14	28.1	.447	.406	.857	3.4	1.6	15	3	8.7	75-32	20.7	.426	.383	.763	2.1	1.2	43	10	6.3
Roberson, Briana	14-14	25.6	.362	.396	.720	2.8	2.7	10	2	8.1	69-21	15.7	.400	.400	.797	1.6	1.2	28	2	5.4
Smith, Alanna	14-0	14.1	.513	.389	.593	2.9	0.3	2	12	7.7	14-0	14.1	.513	.389	.593	2.9	0.3	2	12	7.7
McPhee, Brittany	13-0	16.4	.366	.303	.700	3.1	0.6	6	2	6.4	43-8	11.9	.362	.250	.746	2.5	0.4	20	17	4.3
Johnson, Kaylee	14-7	15.2	.625	.000	.517	5.3	0.8	10	20	3.9	50-35	21.3	.539	.000	.545	8.4	0.5	34	71	5.3
Johnson, Kailee	12-7	18.7	.281	.167	.667	4.0	1.3	10	6	2.4	65-10	10.6	.348	.346	.521	2.1	0.5	26	28	1.9
Snizek, Marta	14-2	15.7	.333	.000	.682	1.9	1.8	11	0	2.4	14-2	15.7	.333	.000	.682	1.9	1.8	11	0	2.4
Coffee, Shannon	8-0	4.0	.438	.000	.231	1.3	0.1	0	1	2.1	8-0	4.0	.438	.000	.231	1.3	0.1	0	1	2.1
Lakhian, Kiran	8-0	4.1	.444	.750	.000	0.9	0.1	1	2	1.4	19-0	2.6	.545	.750	.000	0.6	0.1	2	2	0.8
Picknell, Tess	8-0	4.5	.750	.000	.400	1.6	0.5	0	8	1.0	79-0	3.7	.421	.000	.349	1.3	0.1	3	27	0.6
Romano, Alexa	7-0	4.9	.333	.333	.000	0.4	0.4	0	2	0.7	7-0	4.9	.333	.333	.000	0.4	0.4	0	2	0.7
Green, Alex	6-0	5.7	.000	.000	.500	0.8	0.5	1	0	0.2	66-2	5.0	.328	.174	.600	0.4	0.4	15	0	0.8

SCORING	fg-fga	fg%	3fg-fga	3fg%	ft-fa	ft%	pts	pts/g	fg-fga	fg%	3fg-fga	3fg%	ft-fa	ft%	pts	pts/g
Thompson, Lili	68-180	.378	29-83	.349	52-61	.852	217	15.5	332-824	.403	120-313	.383	199-252	.790	983	11.6
McCall, Erica	82-160	.513	0-0	.000	19-33	.576	183	13.1	222-448	.496	0-0	.000	60-111	.541	504	5.9
Samuelson, Karlie	38-85	.447	28-69	.406	18-21	.857	122	8.7	149-350	.426	101-264	.383	71-93	.763	470	6.3
Roberson, Briana	38-105	.362	19-48	.396	18-25	.720	113	8.1	120-300	.400	42-105	.400	94-118	.797	376	5.4
Smith, Alanna	39-76	.513	14-36	.389	16-27	.593	108	7.7	39-76	.513	14-36	.389	16-27	.593	108	7.7
McPhee, Brittany	26-71	.366	10-33	.303	21-30	.700	83	6.4	59-163	.362	16-64	.250	53-71	.746	187	4.3
Johnson, Kaylee	20-32	.625	0-0	.000	15-29	.517	55	3.9	97-180	.539	0-0	.000	72-132	.545	266	5.3
Johnson, Kailee	9-32	.281	1-6	.167	10-15	.667	29	2.4	46-132	.348	9-26	.346	25-48	.521	126	1.9
Snizek, Marta	9-27	.333	0-5	.000	15-22	.682	33	2.4	9-27	.333	0-5	.000	15-22	.682	33	2.4
Coffee, Shannon	7-16	.438	0-2	.000	3-13	.231	17	2.1	7-16	.438	0-2	.000	3-13	.231	17	2.1
Lakhian, Kiran	4-9	.444	3-4	.750	0-0	.000	11	1.4	6-11	.545	3-4	.750	0-0	.000	15	0.8
Picknell, Tess	3-4	.750	0-0	.000	2-5	.400	8	1.0	16-38	.421	0-0	.000	15-43	.349	47	0.6
Romano, Alexa	2-6	.333	1-3	.333	0-0	.000	5	0.7	2-6	.333	1-3	.333	0-0	.000	5	0.7
Green, Alex	0-4	.000	0-3	.000	1-2	.500	1	0.2	19-58	.328	4-23	.174	9-15	.600	51	0.8

TOTALS	o-reb	d-reb	t-reb	pf	fo	ast	to	a/to	o-reb	d-reb	t-reb	pf	fo	ast	to	a/to
Thompson, Lili	11	47	58	24	0	64	43	1.5	37	212	249	144	0	242	182	1.3
McCall, Erica	43	87	130	21	1	7	20	0.4	163	279	442	116	1	25	85	0.3
Samuelson, Karlie	14	34	48	26	0	22	14	1.6	32	122	154	100	0	93	66	1.4
Roberson, Briana	12	27	39	21	1	38	28	1.4	30	83	113	85	1	83	94	0.9
Smith, Alanna	14	27	41	29	0	4	22	0.2	14	27	41	29	0	4	22	0.2
McPhee, Brittany	11	29	40	15	1	8	23	0.3	40	68	108	45	1	16	43	0.4
Johnson, Kaylee	26	48	74	27	0	11	16	0.7	143	275	418	118	3	25	67	0.4
Johnson, Kailee	16	32	48	23	0	15	7	2.1	50	85	135	90	1	35	47	0.7
Snizek, Marta	5	21	26	9	0	25	23	1.1	5	21	26	9	0	25	23	1.1
Coffee, Shannon	2	8	10	1	0	1	4	0.3	2	8	10	1	0	1	4	0.3
Lakhian, Kiran	2	5	7	0	0	1	2	0.5	3	8	11	1	0	1	4	0.3
Picknell, Tess	5	8	13	5	0	4	4	1.0	23	80	103	44	0	9	24	0.4
Romano, Alexa	1	2	3	1	0	3	1	3.0	1	2	3	1	0	3	1	3.0
Green, Alex	2	3	5	4	0	3	2	1.5	7	22	29	29	0	29	22	1.3

#2 SHANNON COFFEE

Center • Freshman • 6-5 • Dayton, Ohio (Centerville)

2015-16: Put up four points and four rebounds against CSUB (12/22) ... Played a career-high nine minutes in a 93-38 win over Cornell (12/19) and pulled down multiple rebounds for the first time (4) ... Scored five points in her collegiate debut at UC Davis (11/13).

Coffee's 2015-16 Game-By-Game Stats

Date	Opp.	Min.	FG-A	3PT-A	FT-A	Reb.	A	B	S	Pts.
11/13	UC Davis	3	2-2	0-0	1-1	1	0	0	0	5
11/15	Gonzaga				DNP					
11/21	GW	1	1-1	0-0	0-0	0	0	0	0	2
11/23	SCU	5	1-1	0-0	0-0	0	0	1	0	2
11/27	Missouri St.	3	0-1	0-1	0-2	1	0	0	0	0
11/28	Dayton				DNP					
11/29	Purdue				DNP					
12/13	Texas				DNP					
12/16	Tennessee				DNP					
12/19	Cornell	9	1-4	0-0	0-0	4	1	0	0	2
12/22	CSUB	5	1-2	0-1	2-10	4	0	0	0	4
12/28	Chattanooga	3	1-3	0-0	0-0	0	0	0	0	2
1/2	Arizona	3	0-2	0-0	0-0	0	0	0	0	0
1/4	Arizona State				DNP					

Coffee's Career & 2015-16 Game Highs

Career (Last)	Category	15-16 (Last)
5 at UC Davis, 11/13/15	Points	5 at UC Davis, 11/13/15
4, 2x (vs. CSUB, 12/22/15)	Rebounds	4, 2x (vs. CSUB, 12/22/15)
1 vs. Cornell, 12/19/15	Assists	1 vs. Cornell, 12/19/15
0	Steals	0
1 vs. Santa Clara, 11/23/15	Blocks	1 vs. Santa Clara, 11/23/15
2 at UC Davis, 11/13/15	FG Made	2 at UC Davis, 11/13/15
4 vs. Cornell, 12/19/15	FG Attempted	4 vs. Cornell, 12/19/15
0	3PT Made	0
1, 2x (vs. CSUB, 12/22/15)	3PT Attempted	1, 2x (vs. CSUB, 12/22/15)
2 vs. CSUB, 12/22/15	FT Made	2 vs. CSUB, 12/22/15
10 vs. CSUB, 12/22/15	FT Attempted	10 vs. CSUB, 12/22/15
9 vs. Cornell, 12/19/15	Minutes	9 vs. Cornell, 12/19/15

#00 ALEX GREEN

Guard • RS Senior • 5-6 • Dallas, Texas (Bishop Lynch)

CAREER ACCOLADES: 2013-14 Pac-12 All-Academic Honorable Mention.

2015-16: Tied a career high with two rebounds against Chattanooga (12/28) ... Made one free throw against CSUB (12/22), her first point since Feb. 15, 2015 against UCLA ... Played more than 10 minutes for the first time in nearly a year, appearing in 14 off the bench of a win over Cornell (12/19) and notching a rebound, assist and steal ... Made her first appearance of the season at Texas (12/13) ... Missed the first seven games while rehabbing from an ACL tear suffered in practice prior to Stanford's first round NCAA tournament game against CSUN last March.

Green's 2015-16 Game-By-Game Stats

Date	Opp.	Min.	FG-A	3PT-A	FT-A	Reb.	A	B	S	Pts.
11/13	UC Davis									
11/15	Gonzaga									
11/21	GW									
11/23	SCU									
11/27	Missouri St.									
11/28	Dayton									
11/29	Purdue									
12/13	Texas	1	0-0	0-0	0-0	0	0	0	0	0
12/16	Tennessee									
12/19	Cornell	14	0-2	0-1	0-0	1	1	0	1	0
12/22	CSUB	9	0-0	0-0	1-2	1	1	0	0	1
12/28	Chattanooga	3	0-1	0-1	0-0	2	1	0	0	0
1/2	Arizona	5	0-1	0-1	0-0	1	0	0	0	0
1/4	Arizona State	2	0-0	0-0	0-0	0	0	0	0	0

Green's Career & 2015-16 Game Highs

Career (Last)	Category	15-16 (Last)
8 vs. FGCU, 11/27/13	Points	1 vs. CSUB, 12/22/15
2, 5x (vs. Chattanooga, 12/28/15)	Rebounds	2 vs. Chattanooga, 12/28/15
3, 4x (vs. UC Davis, 12/22/14)	Assists	1, 3x (vs. Chattanooga, 12/28/15)
2, 2x (vs. Arizona, 1/16/15)	Steals	1 vs. Cornell, 12/19/15
0	Blocks	0
3 vs. FGCU, 11/27/13	FG Made	0
4, 2x (vs. Boston Coll., 11/14/14)	FG Attempted	2 vs. Cornell, 12/19/15
2 vs. FGCU, 11/27/13	3PT Made	0
2, 6x (vs. Boston Coll., 11/14/14)	3PT Attempted	1, 3x (at Arizona, 1/2/16)
2, 2x (at Chattanooga, 12/17/14)	FT Made	1 vs. CSUB, 12/22/15
2, 7x (vs. CSUB, 12/22/15)	FT Attempted	2 vs. CSUB, 12/22/15
18 vs. SDSU, 11/28/13	Minutes	14 vs. Cornell, 12/19/15

#32 KAILEE JOHNSON

Forward • Junior • 6-3 • Portland, Ore. (Central Catholic)

CAREER ACCOLADES: 2013 McDonald's All-American.

2015-16: Tied a season high with four points at Arizona State (1/4) ... Nabbed two steals for the third time this season at Arizona (1/2) ... Made a season high two field goals to go along with four rebounds and two steals in a win over Chattanooga (12/28) ... Tied a career high with eight boards in a win over CSUB (12/22) ... Pulled down six rebounds in a 93-38 win over Cornell (12/19), her most since Nov. 30, 2014 vs. Prairie View A&M (6) ... Made the fourth start of her career and first since Nov. 15, 2013 at Texas (12/13) ... Scored a season-high four points against the Longhorns ... Drained her first 3-pointer since Feb. 2014 with 1:16 left in overtime against Purdue (11/29) ... Assisted on Karlie Samuelson's 3-pointer with 27 seconds left against Dayton (11/28) which put Stanford up six ... Played a career high 27 minutes in the opener of the Gulf Coast Showcase against Missouri State.

Johnson's 2015-16 Game-By-Game Stats

Date	Opp.	Min.	FG-A	3PT-A	FT-A	Reb.	A	B	S	Pts.
11/13	UC Davis	18	1-4	0-1	1-2	4	1	2	1	3
11/15	Gonzaga	8	0-1	0-0	0-0	2	0	1	0	0
11/21	GW				DNP					
11/23	SCU				DNP					
11/27	Missouri St.	27	0-3	0-2	0-0	2	1	0	0	0
11/28	Dayton	19	0-2	0-0	2-2	2	3	1	0	2
11/29	Purdue	22	1-4	1-2	0-0	4	1	0	0	3
12/13	Texas	25	1-2	0-0	2-2	3	2	0	2	4
12/16	Tennessee	19	1-2	0-0	1-2	2	0	0	1	3
12/19	Cornell	16	1-1	0-0	0-0	6	2	0	1	2
12/22	CSUB	18	1-5	0-1	0-0	8	2	1	0	2
12/28	Chattanooga	15	2-4	0-0	0-1	4	1	0	2	4
1/2	Arizona	19	0-1	0-0	2-4	7	1	1	2	2
1/4	Arizona State	24	1-3	0-0	2-2	4	1	0	1	4

Johnson's Career & 2015-16 Game Highs

Career (Last)	Category	15-16 (Last)
11 vs. Gonzaga, 12/14/13	Points	4, 2x (at Arizona State, 1/4/16)
8, 2x (vs. CSUB, 12/22/15)	Rebounds	8 vs. CSUB, 12/22/15
3, 3x (vs. Dayton, 11/28/15)	Assists	3 vs. Dayton, 11/28/15
2, 4x (at Arizona, 1/2/16)	Steals	2, 3x (at Arizona, 1/2/16)
3 vs. Boston Coll., 11/14/14	Blocks	2 at UC Davis, 11/13/15
4, 2x (vs. Gonzaga, 12/14/13)	FG Made	2 vs. Chattanooga, 12/28/15
9 at UConn, 11/11/13	FG Attempted	5 vs. CSUB, 12/22/15
2 vs. Gonzaga, 12/14/13	3PT Made	1 vs. Purdue, 11/29/15
3, 2x (vs. Gonzaga, 12/14/13)	3PT Attempted	2 vs. Purdue, 11/29/15
3 vs. Purdue, 11/26/13	FT Made	2, 4x (at Arizona State, 1/4/16)
4, 6x (at Arizona, 1/2/16)	FT Attempted	4 at Arizona, 1/2/16
27 vs. Missouri St., 11/27/15	Minutes	27 vs. Missouri St., 11/27/15

#5 KAYLEE JOHNSON

Forward • Sophomore • 6-3 • Casper, Wyo. (Natrona County)

CAREER ACCOLADES: 2014-15 Pac-12 All-Freshman Team ... Pac-12 Freshman of the Week (Feb. 16, 2015) ... USBWA National Freshman of the Week (Dec. 16, 2014) ... Pac-12 Freshman of the Week (Dec. 15, 2014) ... Pac-12 Freshman of the Week (Dec. 1, 2014).**USA BASKETBALL:** Participated in the USA Basketball Women's Pan American Games and World University Games Team Trials at the United States Olympic Training Center in May 2015.

2015-16: Seventh in the Pac-12 in blocked shots (1.5) ... Over the last five games, is averaging 8.4 points on 80.0 percent shooting (16-of-20) and 7.0 rebounds ... Has scored in double figures in three of the past five games after doing it just six times as a freshman last season ... Nabbed a career-high four steals in a win over Chattanooga (12/28) ... Went 5-of-7 from the floor against CSUB (12/22), tying a personal best in field goals made ... Notched the sixth double-double of her career and first of the season with 10 points and 11 rebounds in a win over Cornell (12/19) ... Scored a season-high 10 points on 3-of-4 shooting off the bench against Tennessee ... Was her first game in double figures since Feb. 2, 2015 vs. Washington ... Notched three blocks in three straight games against George Washington (11/21), Santa Clara (11/23) and Missouri State (11/27) ... Grabbed 10+ rebounds in consecutive games against Gonzaga (11/15) and No. 22 George Washington (11/21) ... Has pulled down at least that many in 21 of her 47 career games.

Johnson's 2015-16 Game-By-Game Stats

Date	Opp.	Min.	FG-A	3PT-A	FT-A	Reb.	A	B	S	Pts.
11/13	UC Davis	10	0-1	0-0	0-2	5	1	2	1	0
11/15	Gonzaga	32	0-3	0-0	1-2	10	2	1	0	1
11/21	GW	19	1-3	0-0	1-2	10	0	3	1	3
11/23	SCU	25	0-1	0-0	0-0	2	1	3	2	0
11/27	Missouri St.	16	1-1	0-0	3-4	8	0	3	0	5
11/28	Dayton	3	0-0	0-0	0-0	1	0	0	0	0
11/29	Purdue	6	0-0	0-0	0-0	0	1	0	0	0
12/13	Texas	3	0-0	0-0	0-0	0	0	0	0	0
12/16	Tennessee	16	3-4	0-0	4-6	5	0	2	0	10
12/19	Cornell	16	4-4	0-0	2-2	11	3	3	1	10
12/22	CSUB	11	5-7	0-0	1-5	7	1	0	0	11
12/28	Chattanooga	20	4-4	0-0	0-0	6	0	0	4	8
1/2	Arizona	19	0-1	0-0	3-6	6	1	2	1	3
1/4	Arizona State	17	2-3	0-0	0-0	3	1	1	0	4

Johnson's Career & 2015-16 Game Highs

Career (Last)	Category	15-16 (Last)
13 at Washington St., 1/11/15	Points	11 vs. CSUB, 12/22/15
22, 2x (vs. Santa Clara, 12/14/14)	Rebounds	11 vs. Cornell, 12/19/15
3 vs. Cornell, 12/19/15	Assists	3 vs. Cornell, 12/19/15
4 vs. Chattanooga, 12/28/15	Steals	4 vs. Chattanooga, 12/28/15
5 vs. Arizona State, 3/7/15	Blocks	3, 4x (vs. Cornell, 12/19/15)
5, 4x (vs. CSUB, 12/22/15)	FG Made	5 vs. CSUB, 12/22/15
9 vs. UC Davis, 12/22/14	FG Attempted	7 vs. CSUB, 12/22/15
0	3PT Made	0
0	3PT Attempted	0
6, 2x (at UCLA, 1/23/15)	FT Made	4 vs. Tennessee, 12/16/15
12 at UCLA, 1/23/15	FT Attempted	6, 2x (at Arizona, 1/2/16)
38 vs. Texas, 11/20/14	Minutes	32 at Gonzaga, 11/15/15

#25 KIRAN LAKHIAN

Guard • Senior • 6-0 • Plano, Texas (Plano West)

2015-16: Set career highs in minutes (10) and points (9) while going 3-of-4 from deep against Cornell (12/19) ... Also handed out the first assist of her career against the Big Red ... Walk-on in 2012-13, then attended Stanford without playing basketball before returning to the team for her senior season.

Lakhian's 2015-16 Game-By-Game Stats

Date	Opp.	Min.	FG-A	3PT-A	FT-A	Reb.	A	B	S	Pts.
11/13	UC Davis	5	0-2	0-0	0-0	1	0	0	0	0
11/15	Gonzaga				DNP					
11/21	GW	0+	0-0	0-0	0-0	0	0	0	0	0
11/23	SCU				DNP					
11/27	Missouri St.	2	0-0	0-0	0-0	0	0	1	0	0
11/28	Dayton				DNP					
11/29	Purdue				DNP					
12/13	Texas				DNP					
12/16	Tennessee				DNP					
12/19	Cornell	10	3-4	3-4	0-0	2	1	1	0	9
12/22	CSUB	5	1-2	0-0	0-0	2	0	0	0	2
12/28	Chattanooga	6	0-1	0-0	0-0	1	0	0	1	0
1/2	Arizona	3	0-0	0-0	0-0	1	0	0	0	0
1/4	Arizona State	2	0-0	0-0	0-0	0	0	0	0	0

Lakhian's Career & 2015-16 Game Highs

Career (Last)	Category	15-16 (Last)
9 vs. Cornell, 12/19/15	Points	9 vs. Cornell, 12/19/15
3 at UC Davis, 11/30/12	Rebounds	2, 2x (vs. CSUB, 12/22/15)
1 vs. Cornell, 12/19/15	Assists	1 vs. Cornell, 12/19/15
1, 2x (vs. Chattanooga, 12/28/15)	Steals	1 vs. Chattanooga, 12/28/15
1, 2x (vs. Cornell, 12/19/15)	Blocks	1, 2x (vs. Cornell, 12/19/15)
3 vs. Cornell, 12/19/15	FG Made	3 vs. Cornell, 12/19/15
4 vs. Cornell, 12/19/15	FG Attempted	4 vs. Cornell, 12/19/15
3 vs. Cornell, 12/19/15	3PT Made	3 vs. Cornell, 12/19/15
4 vs. Cornell, 12/19/15	3PT Attempted	4 vs. Cornell, 12/19/15
0	FT Made	0
0	FT Attempted	0
10 vs. Cornell, 12/19/15	Minutes	10 vs. Cornell, 12/19/15

#24 ERICA MCCALL

Forward • Junior • 6-3 • Bakersfield, Calif. (Ridgeview)

CAREER ACCOLADES: 2014-15 Pac-12 All-Academic Honorable Mention ... 2013 McDonald's All-American.

USA BASKETBALL: Co-captained the United States to a perfect 6-0 record and gold at the 2015 World University Games in Gwangju, South Korea ... Tied for eighth at the event in scoring (15.2), was eighth in rebounds (8.5) and tied for third in blocks (1.8) ... Led all players in South Korea in field goal percentage, converting 37 of her 62 attempts from the floor (.597) ... Has captured four gold medals with USA Basketball teams - 2011 FIBA U16 Americas Championship; 2012 FIBA U17 World Championship; 2012 FIBA 3x3 U18 World Championship For Women; 2015 FISU World University Games.

2015-16: Team captain ... Had four rejections for the second straight game against Chattanooga (12/28) to go along with 18 points and eight rebounds ... Went for 15 points and 10 boards against her father's CSU Bakersfield squad on Dec. 22 ... Began the season with four consecutive double-doubles ... Joined Chiney Ogwumike (2013-14) as the only Stanford players in the past decade to register double-doubles in the first four games of the year ... Eight of her 10 career double-doubles have come this season ... Eighth in the nation in double-doubles ... Sixth in the Pac-12 in rebounds (9.3) ... Third in the conference in blocks per game (2.07) ... Swatted a career-high five shots at No. 5 Texas (12/13) ... Scored a career-high 23 points at Gonzaga (11/15).

McCall's 2015-16 Game-By-Game Stats

Date	Opp.	Min.	FG-A	3PT-A	FT-A	Reb.	A	B	S	Pts.
11/13	UC Davis	26	4-14	0-0	2-4	11	0	2	1	10
11/15	Gonzaga	35	9-17	0-0	5-11	13	0	1	4	23
11/21	GW	36	9-15	0-0	0-0	10	2	2	0	18
11/23	SCU	39	4-9	0-0	4-6	11	0	2	0	12
11/27	Missouri St.	31	4-7	0-0	1-2	10	1	1	0	9
11/28	Dayton	37	8-13	0-0	0-0	9	2	0	0	16
11/29	Purdue	40	4-13	0-0	4-4	11	2	3	2	12
12/13	Texas	38	6-12	0-0	2-3	13	0	5	0	14
12/16	Tennessee	36	7-12	0-0	0-1	10	0	1	1	14
12/19	Cornell	16	6-9	0-0	0-0	7	0	0	0	12
12/22	CSUB	22	7-11	0-0	1-1	10	0	4	1	15
12/28	Chattanooga	29	9-16	0-0	0-1	8	0	4	2	18
1/2	Arizona	19	3-4	0-0	0-0	4	0	2	1	6
1/4	Arizona State	25	2-8	0-0	0-0	3	0	2	2	4

McCall's Career & 2015-16 Game Highs

Career (Last)	Category	15-16 (Last)
23 at Gonzaga, 11/15/15	Points	23 at Gonzaga, 11/15/15
16 vs. Arizona, 1/16/15	Rebounds	13, 2x (at Texas, 12/13/15)
2, 5x (vs. Purdue, 11/29/15)	Assists	2, 3x (vs. Purdue, 11/29/15)
4 at Gonzaga, 11/15/15	Steals	4 at Gonzaga, 11/15/15
5 at Texas, 12/13/15	Blocks	5 at Texas, 12/13/15
9, 3x (vs. Chattanooga, 12/28/15)	FG Made	9, 3x (vs. Chattanooga, 12/28/15)
17 at Gonzaga, 11/15/15	FG Attempted	17 at Gonzaga, 11/15/15
0	3PT Made	0
0	3PT Attempted	0
5 at Gonzaga, 11/15/15	FT Made	5 at Gonzaga, 11/15/15
11 at Gonzaga, 11/15/15	FT Attempted	11 at Gonzaga, 11/15/15
40 vs. Purdue, 11/29/15	Minutes	40 vs. Purdue, 11/29/15

#12 BRITTANY MCPHEE

Guard • Sophomore • 6-0 • Normandy Park, Wash. (Mount Rainier)

CAREER ACCOLADES: *Pac-12 Freshman of the Week (Feb. 23, 2015).*

2015-16: Had the second-highest scoring output of her career when she put up 21 on 6-of-10 shooting in the Pac-12 opener at Arizona (1/2) ... Set career highs in both free throw makes (6) and attempts (8) ... Handed out multiple assists for the second time in her career against CSUB (12/22) ... Scored nine points in 15 minutes in a win over Cornell (12/19) ... Scored 12 points on a career-best four made 3-pointers at Texas (12/13).

McPhee's 2015-16 Game-By-Game Stats

Date	Opp.	Min.	FG-A	3PT-A	FT-A	Reb.	A	B	S	Pts.
11/13	UC Davis	20	2-7	0-3	3-4	4	1	0	1	7
11/15	Gonzaga	21	2-7	1-2	1-2	5	1	0	0	6
11/21	GW	11	0-2	0-1	0-0	6	0	0	1	0
11/23	SCU	25	1-8	1-7	1-2	6	0	0	0	4
11/27	Missouri St.	15	2-5	1-3	0-0	3	1	0	0	5
11/28	Dayton	6	1-1	0-0	0-0	1	0	0	0	2
11/29	Purdue	17	3-7	0-1	1-2	2	0	0	1	7
12/13	Texas	21	4-9	4-4	0-0	2	1	0	0	12
12/16	Tennessee	7	0-1	0-1	1-2	4	0	0	0	1
12/19	Cornell	15	2-7	0-3	5-6	1	0	0	1	9
12/22	CSUB	17	2-5	0-2	1-2	4	2	0	0	5
12/28	Chattanooga				DNP					
1/2	Arizona	26	6-10	3-6	6-8	1	1	1	1	21
1/4	Arizona State	12	1-2	0-0	2-2	1	1	1	0	4

McPhee's Career & 2015-16 Game Highs

Career (Last)	Category	15-16 (Last)
24 vs. California, 2/22/15	Points	21 at Arizona, 1/2/16
8 at Oregon, 3/1/15	Rebounds	6 vs. GW, 11/21/15
2, 2x (vs. CSUB, 12/22/15)	Assists	2 vs. CSUB, 12/22/15
3 vs. UCSB, 12/28/14	Steals	1, 5x (at Arizona, 1/2/16)
3, 2x (vs. Utah, 1/3/15)	Blocks	1 at Arizona, 1/2/16
10 vs. California, 2/22/15	FG Made	6 at Arizona, 1/2/16
16 vs. California, 2/22/15	FG Attempted	10 at Arizona, 1/2/16
4 at Texas, 12/13/15	3PT Made	4 at Texas, 12/13/15
7 vs. Santa Clara, 11/23/15	3PT Attempted	7 vs. Santa Clara, 11/23/15
6 at Arizona, 1/2/16	FT Made	6 at Arizona, 1/2/16
8 at Arizona, 1/2/16	FT Attempted	8 at Arizona, 1/2/16
26 at Arizona, 1/2/16	Minutes	26 at Arizona, 1/2/16

#34 TESS PICKNELL

Center • Senior • 6-5 • Medford, Ore. (South Medford)

2015-16: Made multiple field goals for the first time in her career against Chattanooga (12/28) ... Tied career highs in points (4) and blocks (3) in seven minutes of action in a win over CSUB (12/22) ... Appeared in nine minutes off the bench against Cornell (12/19), grabbing two rebounds ... Also had two boards in the season opener at UC Davis (11/13).

Picknell's 2015-16 Game-By-Game Stats

Date	Opp.	Min.	FG-A	3PT-A	FT-A	Reb.	A	B	S	Pts.
11/13	UC Davis	5	0-0	0-0	0-0	2	2	2	0	0
11/15	Gonzaga				DNP					
11/21	GW	2	0-0	0-0	0-0	0	1	0	0	0
11/23	SCU	1	0-0	0-0	0-0	0	0	1	0	0
11/27	Missouri St.				DNP					
11/28	Dayton				DNP					
11/29	Purdue				DNP					
12/13	Texas				DNP					
12/16	Tennessee				DNP					
12/19	Cornell	9	0-0	0-0	0-0	2	0	0	0	0
12/22	CSUB	7	1-2	0-0	2-5	6	0	3	0	4
12/28	Chattanooga	5	2-2	0-0	0-0	2	0	1	0	4
1/2	Arizona	5	0-0	0-0	0-0	1	0	1	0	0
1/4	Arizona State	2	0-0	0-0	0-0	0	1	0	0	0

Picknell's Career & 2015-16 Game Highs

Career (Last)	Category	15-16 (Last)
4, 3x (vs. Chattanooga, 12/28/15)	Points	4, 2x (vs. Chattanooga, 12/28/15)
8 at Hawai'i, 11/17/12	Rebounds	6 vs. CSUB, 12/22/15)
2, 2x (at UC Davis, 11/13/15)	Assists	2 at UC Davis, 11/13/15
1, 3x (vs. Penn St., 3/30/14)	Steals	0
3, 2x (vs. CSUB, 12/22/15)	Blocks	3 vs. CSUB, 12/22/15
2 vs. Chattanooga, 12/28/15	FG Made	2 vs. Chattanooga, 12/28/15
3 vs. Santa Clara, 12/14/14	FG Attempted	2, 2x (vs. Chattanooga, 12/28/15)
0	3PT Made	0
0	3PT Attempted	0
2, 4x (vs. CSUB, 12/22/15)	FT Made	2 vs. CSUB, 12/22/15
5 vs. CSUB, 12/22/15	FT Attempted	5 vs. CSUB, 12/22/15
16 at Hawai'i, 11/17/12	Minutes	9 vs. Cornell, 12/19/15

#10 BRIANA ROBERSON

Guard • Junior • 5-7 • Fullerton, Calif. (Troy)

CAREER ACCOLADES: 2014-15 Pac-12 All-Academic Honorable Mention.

2015-16: Team captain ... Tied a career high with five assists in a win over Chattanooga (12/28) ... Scored a career-high 26 points in an overtime win against Purdue in the championship of the Gulf Coast Showcase (11/29) ... Went 5-of-6 from deep against the Boilermakers, a career high in both makes and attempts ... Fourth the Pac-12 in 3-point field goal percentage (.463) ... Grabbed a personal best six rebounds against Santa Clara (11/23) ... Set a career high with three steals in a win over No. 22 George Washington (11/21).

Roberson's 2015-16 Game-By-Game Stats

Date	Opp.	Min.	FG-A	3PT-A	FT-A	Reb.	A	B	S	Pts.
11/13	UC Davis	23	6-12	3-4	0-0	4	3	0	1	15
11/15	Gonzaga	35	1-6	0-2	1-1	2	5	1	0	3
11/21	GW	25	1-12	0-2	2-2	3	4	1	3	4
11/23	SCU	25	3-7	2-5	1-3	6	3	0	0	9
11/27	Missouri St.	28	6-10	4-6	2-2	2	3	0	2	18
11/28	Dayton	26	1-6	0-2	3-4	3	1	0	1	5
11/29	Purdue	42	7-12	5-6	7-7	5	1	0	1	26
12/13	Texas	34	3-8	1-5	0-0	1	3	0	1	7
12/16	Tennessee	17	1-4	0-2	0-2	2	1	0	0	2
12/19	Cornell	18	4-7	1-3	0-0	3	3	0	0	9
12/22	CSUB	21	1-4	0-1	0-0	3	3	0	1	2
12/28	Chattanooga	21	3-5	3-3	0-0	1	5	0	0	9
1/2	Arizona	19	1-6	0-5	1-2	1	2	0	0	3
1/4	Arizona State	25	0-6	0-2	1-2	3	1	0	0	1

Roberson's Career & 2015-16 Game Highs

Career (Last)	Category	15-16 (Last)
26 vs. Purdue, 11/29/15	Points	26 vs. Purdue, 11/29/15
6 vs. Santa Clara, 11/23/15	Rebounds	6 vs. Santa Clara, 11/23/15
5, 3x (vs. Chattanooga, 12/28/15)	Assists	5, 2x (vs. Chattanooga, 12/28/15)
3 vs. GW, 11/21/15	Steals	3 vs. GW, 11/21/15
1, 2x (vs. GW, 11/21/15)	Blocks	1, 2x (vs. GW, 11/21/15)
8 at UCLA, 1/23/15	FG Made	7 vs. Purdue, 11/29/15
15 at UCLA, 1/23/15	FG Attempted	12, 3x (vs. Purdue, 11/29/15)
5 vs. Purdue, 11/29/15	3PT Made	5 vs. Purdue, 11/29/15
7 at UCLA, 1/23/15	3PT Attempted	6 vs. Purdue, 11/29/15
8, 3x (vs. Oklahoma, 3/23/15)	FT Made	7 vs. Purdue, 11/29/15
10 vs. Texas, 11/20/14	FT Attempted	7 vs. Purdue, 11/29/15
42 vs. Purdue, 11/29/15	Minutes	42 vs. Purdue, 11/29/15

#22 ALEXA ROMANO

Guard • Freshman • 5-10 • Albuquerque, N.M. (La Cueva)

2015-16: Handed out multiple assists for the first time in her career against Chattanooga (12/28) ... Played 12 minutes in a win over Cornell (12/19), making one field goal and pulling down two rebounds ... Scored her first collegiate points on a late 3-pointer in a win over No. 22 George Washington (11/21).

Romano's 2015-16 Game-By-Game Stats

Date	Opp.	Min.	FG-A	3PT-A	FT-A	Reb.	A	B	S	Pts.
11/13	UC Davis	5	0-1	0-1	0-0	0	0	1	0	0
11/15	Gonzaga				DNP					
11/21	GW	2	1-1	1-1	0-0	0	0	0	0	3
11/23	SCU				DNP					
11/27	Missouri St.	2	0-1	0-1	0-0	0	0	0	0	0
11/28	Dayton				DNP					
11/29	Purdue				DNP					
12/13	Texas				DNP					
12/16	Tennessee				DNP					
12/19	Cornell	12	1-3	0-0	0-0	2	1	0	0	2
12/22	CSUB	5	0-0	0-0	0-0	0	0	1	0	0
12/28	Chattanooga	5	0-0	0-0	0-0	0	2	0	0	0
1/2	Arizona	3	0-0	0-0	0-0	1	0	0	0	0
1/4	Arizona State				DNP					

Romano's Career & 2015-16 Game Highs

Career (Last)	Category	15-16 (Last)
3 vs. GW, 11/21/15	Points	3 vs. GW, 11/21/15
2 vs. Cornell, 12/19/15	Rebounds	2 vs. Cornell, 12/19/15
2 vs. Chattanooga, 12/28/15	Assists	2 vs. Chattanooga, 12/28/15
0	Steals	0
1, 2x (vs. CSUB, 12/22/15)	Blocks	1, 2x (vs. CSUB, 12/22/15)
1, 2x (vs. Cornell, 12/19/15)	FG Made	1, 2x (vs. Cornell, 12/19/15)
3 vs. Cornell, 12/19/15	FG Attempted	3 vs. Cornell, 12/19/15
1 vs. GW, 11/21/15	3PT Made	1 vs. GW, 11/21/15
1, 3x (vs. Missouri St., 11/27/15)	3PT Attempted	1, 3x (vs. Missouri St., 11/27/15)
0	FT Made	0
0	FT Attempted	0
12 vs. Cornell, 12/19/15	Minutes	12 vs. Cornell, 12/19/15

#44 KARLIE SAMUELSON

Guard • Junior • 6-0 • Huntington Beach, Calif. (Mater Dei)

CAREER ACCOLADES: 2014-15 Pac-12 All-Academic Honorable Mention ... 2013-14 Pac-12 All-Freshman Honorable Mention.

2015-16: Team captain ... Set a career best with three steals at Arizona State (1/4) ... Tied a career high with six rebounds in the Pac-12 opener at Arizona (1/2) ... Hit double figures in scoring for the 17th time in her career with 10 in a win over Chattanooga (12/28) to go along with a season-high four assists ... Has scored in double figures in three of the past five games ... Drained four 3-pointers against No. 22 George Washington (11/21), five against Missouri State (11/27) and has hit at least four in a game seven times in her career ... Eighth in the Pac-12 in 3-point field goal percentage (.406) ... Iced the win over Dayton (11/28) by nailing a 3-pointer with 27 seconds left to put Stanford up six ... Her 17 points against the Colonials were her best since a career-high 23 at New Mexico on Nov. 24, 2014.

Samuelson's 2015-16 Game-By-Game Stats

Date	Opp.	Min.	FG-A	3PT-A	FT-A	Reb.	A	B	S	Pts.
11/13	UC Davis	29	3-7	2-6	1-2	3	2	0	0	9
11/15	Gonzaga	26	3-6	1-4	0-1	3	1	0	1	7
11/21	GW	35	6-8	4-6	1-2	3	1	0	1	17
11/23	SCU	21	2-8	2-8	2-2	3	1	0	0	8
11/27	Missouri St.	29	5-9	5-7	0-0	5	2	1	2	15
11/28	Dayton	39	2-7	2-7	2-2	4	2	0	1	8
11/29	Purdue	37	1-3	0-1	4-4	2	1	0	1	6
12/13	Texas	21	2-4	2-4	0-0	1	0	0	1	6
12/16	Tennessee	37	2-7	1-5	2-2	3	1	0	2	7
12/19	Cornell	16	3-3	3-3	2-2	4	3	1	2	11
12/22	CSUB	25	4-5	3-4	2-2	5	2	1	0	13
12/28	Chattanooga	32	3-13	2-10	2-2	3	4	0	1	10
1/2	Arizona	18	0-1	0-1	0-0	6	1	0	0	0
1/4	Arizona State	29	2-4	1-3	0-0	3	1	0	3	5

Samuelson's Career & 2015-16 Game Highs

Career (Last)	Category	15-16 (Last)
23 at New Mexico, 11/24/14	Points	17 vs. GW, 11/21/15
6, 2x (at Arizona, 1/2/16)	Rebounds	6 at Arizona, 1/2/16
6 vs. UC Davis, 11/17/13	Assists	4 vs. Chattanooga, 12/28/15
3 at Arizona State, 1/4/16	Steals	3 at Arizona State, 1/4/16
1, 10x (vs. CSUB, 12/22/15)	Blocks	1, 3x (vs. CSUB, 12/22/15)
8 at New Mexico, 11/24/14	FG Made	6 vs. GW, 11/21/15
16 at New Mexico, 11/24/14	FG Attempted	13 vs. Chattanooga, 12/28/15
6 at New Mexico, 11/24/14	3PT Made	5 vs. Missouri St., 11/27/15
12 at New Mexico, 11/24/14	3PT Attempted	10 vs. Chattanooga, 12/28/15
7 at California, 2/2/14	FT Made	4 vs. Purdue, 11/29/15
7, 2x (at California, 2/2/14)	FT Attempted	4 vs. Purdue, 11/29/15
40 vs. UConn, 11/17/14	Minutes	39 vs. Dayton, 11/28/15

#11 ALANNA SMITH

Forward • Freshman • 6-3 • Melbourne, Australia (Wesley College)

BASKETBALL AUSTRALIA: Led Australia to a third-place finish and was named to the All-Star Five at the FIBA U19 Women's World Championship in Chekhov, Russia in July 2015 ... Paced Australia's Under-19 Gems squad in points, rebounds, blocks and steals while playing 22.3 minutes per game ... Tied for 12th in the entire tournament in points per game (12.6), tied for 15th in rebounds (7.0), tied for third in blocks (2.7) and tied for 23rd in steals (1.3) ... Made 33-of-76 attempts from the floor in seven games and finished 22nd at the event in field goal percentage (.434).

2015-16: Has scored in double figures six times this season, including in three of Stanford's last five games ... Is the team's second-leading scorer over that span, averaging 10.2 points on 52.9 percent shooting, including a 40.0 percent mark from deep ... Scored 16, including making 4-of-5 from 3-point range, in the Pac-12 opener at Arizona (1/2) ... Pulled down a career-high seven rebounds against Chattanooga (12/28) ... Scored 14 points in 17 minutes on 6-of-11 shooting in a win over CSUB (12/22) ... Reached double figures in scoring for the fourth time this season in a win over Cornell (12/19), going 6-of-8 from the line ... Exploded for a career-high 22 points on 6-of-8 shooting from behind the arc in 21 minutes of a win against Dayton (11/28) at the Gulf Coast Showcase ... Grabbed six rebounds against Santa Clara (11/23) ... One of four Cardinal players in double-figures in a win over No. 22 George Washington (11/21) ... Scored 13 points on 6-of-11 shooting in her collegiate debut at UC Davis (11/13) ... Highest scoring output for a Cardinal freshman in a season opener since Amber Orrange had 14 at Texas on Nov. 11, 2011.

Smith's 2015-16 Game-By-Game Stats

Date	Opp.	Min.	FG-A	3PT-A	FT-A	Reb.	A	B	S	Pts.
11/13	UC Davis	16	6-11	1-4	0-0	1	0	1	0	13
11/15	Gonzaga	5	2-2	0-0	0-1	1	0	0	0	4
11/21	GW	18	4-7	1-3	1-2	1	0	2	0	10
11/23	SCU	16	0-1	0-1	2-4	6	1	0	0	2
11/27	Missouri St.	8	0-3	0-1	0-0	3	0	0	0	0
11/28	Dayton	21	7-9	6-8	2-4	4	1	2	0	22
11/29	Purdue	14	0-3	0-2	0-0	3	1	0	0	0
12/13	Texas	15	1-4	0-2	0-0	3	1	0	0	2
12/16	Tennessee	8	1-2	0-0	2-2	1	0	0	1	4
12/19	Cornell	14	3-6	0-1	6-8	3	0	1	1	12
12/22	CSUB	17	6-11	2-6	0-0	3	0	2	0	14
12/28	Chattanooga	15	2-6	0-2	3-4	7	0	1	0	7
1/2	Arizona	17	6-8	4-5	0-0	4	0	2	0	16
1/4	Arizona State	13	1-3	0-1	0-2	1	0	1	0	2

Smith's Career & 2015-16 Game Highs

Career (Last)	Category	15-16 (Last)
22 vs. Dayton, 11/28/15	Points	22 vs. Dayton, 11/28/15
7 vs. Chattanooga, 12/28/15	Rebounds	7 vs. Chattanooga, 12/28/15
1, 4x (at Texas, 12/13/15)	Assists	1, 4x (at Texas, 12/13/15)
1, 2x (vs. Cornell, 12/19/15)	Steals	1, 2x (vs. Cornell, 12/19/15)
2, 4x (at Arizona, 1/2/16)	Blocks	2, 4x (at Arizona, 1/2/16)
7 vs. Dayton, 11/28/15	FG Made	7 vs. Dayton, 11/28/15
11, 2x (vs. CSUB, 12/22/15)	FG Attempted	11, 2x (vs. CSUB, 12/22/15)
6 vs. Dayton, 11/28/15	3PT Made	6 vs. Dayton, 11/28/15
8 vs. Dayton, 11/28/15	3PT Attempted	8 vs. Dayton, 11/28/15
6 vs. Cornell, 12/19/15	FT Made	6 vs. Cornell, 12/19/15
8 vs. Cornell, 12/19/15	FT Attempted	8 vs. Cornell, 12/19/15
21 vs. Dayton, 11/28/15	Minutes	21 vs. Dayton, 11/28/15

#13 MARTA SNIEZEK

Guard • Freshman • 5-8 • McLean, Va. (National Cathedral [D.C.]

2015-16: Handed out four assists for the third time this season against CSUB (12/22) ... Grabbed season-high five rebounds in a win over Cornell (12/19) ... Played a career-high 29 minutes in a win over No. 14 Tennessee (12/16), putting up personal bests in points (9), assists (4), free throws made (5) and free throws attempts (9) ... Went a perfect 4-of-4 from the line and scored six points in a win over No. 22 George Washington (11/21) ... Started the season opener at UC Davis (11/13), becoming the 12th true freshman to start a season opener for Stanford since 2000-01.

Sniezek's 2015-16 Game-By-Game Stats

Date	Opp.	Min.	FG-A	3PT-A	FT-A	Reb.	A	B	S	Pts.
11/13	UC Davis	26	1-3	0-1	0-0	2	4	0	2	2
11/15	Gonzaga	9	0-1	0-0	0-0	0	0	0	0	0
11/21	GW	18	1-3	0-1	4-4	2	2	0	1	6
11/23	SCU	9	0-0	0-0	0-0	0	1	0	0	0
11/27	Missouri St.	18	2-4	0-1	0-0	2	3	0	3	4
11/28	Dayton	13	0-2	0-1	0-0	2	1	0	0	0
11/29	Purdue	8	0-0	0-0	0-0	1	0	0	1	0
12/13	Texas	6	1-1	0-0	1-3	0	0	0	0	3
12/16	Tennessee	29	2-3	0-0	5-9	3	4	0	2	9
12/19	Cornell	16	0-2	0-0	4-4	5	1	0	0	4
12/22	CSUB	15	0-1	0-0	1-2	4	4	0	1	1
12/28	Chattanooga	17	0-1	0-0	0-0	0	1	0	0	0
1/2	Arizona	18	2-3	0-0	0-0	4	3	0	0	4
1/4	Arizona State	18	0-3	0-1	0-0	1	1	0	1	0

Sniezek's Career & 2015-16 Game Highs

Career (Last)	Category	15-16 (Last)
9 vs. Tennessee, 12/16/15	Points	9 vs. Tennessee, 12/16/15
5 vs. Cornell, 12/19/15	Rebounds	5 vs. Cornell, 12/19/15
4, 3x (vs. CSUB, 12/22/15)	Assists	4, 3x (vs. CSUB, 12/22/15)
3 vs. Missouri St., 11/27/15	Steals	3 vs. Missouri St., 11/27/15
0	Blocks	0
2, 3x (at Arizona, 1/2/16)	FG Made	2, 3x (at Arizona, 1/2/16)
4 vs. Missouri St., 11/27/15	FG Attempted	4 vs. Missouri St., 11/27/15
0	3PT Made	0
1, 5x (at Arizona State, 1/4/16)	3PT Attempted	1, 5x (at Arizona State, 1/4/16)
5 vs. Tennessee, 12/16/15	FT Made	5 vs. Tennessee, 12/16/15
9 vs. Tennessee, 12/16/15	FT Attempted	9 vs. Tennessee, 12/16/15
29 vs. Tennessee, 12/16/15	Minutes	29 vs. Tennessee, 12/16/15

#1 LILI THOMPSON

Guard • Junior • 5-7 • Mansfield, Texas (Timberview)

CAREER ACCOLADES: 2015-16 Naimsmith Trophy Women's Watch List ... 2015-16 John R. Wooden Award Women's Preseason Top 30 ... Pac-12 Player of the Week (Dec. 21, 2015) ... Pac-12 Player of the Week (Nov. 30, 2015) ... 2014-15 All-Pac-12 ... 2014-15 Capital One Academic All-District ... Pac-12 Player of the Week (Nov. 24, 2014) ... espnW National Player of the Week (Nov. 23, 2014) ... 2013-14 Pac-12 All-Freshman Team.

USA BASKETBALL: Participated in the USA Basketball Women's Pan American Games and World University Games Team Trials at the United States Olympic Training Center in May 2015.

2015-16: Naimsmith Trophy Women's Watch List ... John R. Wooden Award Women's Pre-season Top 30 ... Pac-12 Player of the Week (Dec. 21) ... Pac-12 Player of the Week (Nov. 30) ... Gulf Coast Showcase MVP ... Team captain ... 10th in the Pac-12 in scoring (15.5) ... Seventh in the league in 3-pointers made per game (2.1) ... Ninth in the Pac-12 in assists (4.6) ... Has scored in double figures in 11 of 14 games this season and put up at least 20 five times ... Half of her 10 career 20-point efforts have come this year ... Tied a career high with two blocks against Chattanooga (12/28) ... Tied a season high with seven assists in a win over CSUB (12/22) ... Won her second Pac-12 Player of the Week award of the season on Dec. 21 after averaging 15.0 points, 5.0 rebounds and 4.0 assists in wins over Tennessee (12/16) and Cornell (12/19) ... Scored 19 and tied a career high with seven rebounds in the victory against the No. 14 Lady Vols ... Led the Cardinal to the Gulf Coast Showcase title with averages of 21.0 points and 6.0 assists per game at the event in Florida ... Started off with 26 points on 10-of-21 shooting in the opener against Missouri State (11/27) ... Scored 19 and handed out a season-high seven assists against Dayton (11/28) ... Scored 19 and went 9-of-9 at the line to lift Stanford to a 71-65 overtime win against Purdue (11/29) ... Began the week with a 21-point outing against Santa Clara (11/23) to earn her second career Pac-12 Player of the Week honor on Nov. 30 ... Her 26-point outing against Missouri State was her fourth consecutive, making the junior captain the first Cardinal guard to score 20 in four straight games since Candice Wiggins in 2008 ... Tied a career high with three steals against Santa Clara (11/23) ... Had six assists with zero turnovers against the Colonials, the best assist to turnover ratio of her career.

Thompson's 2015-16 Game-By-Game Stats

Date	Opp.	Min.	FG-A	3PT-A	FT-A	Reb.	A	B	S	Pts.
11/13	UC Davis	14	2-7	1-4	5-6	3	2	0	0	10
11/15	Gonzaga	29	6-14	4-7	5-6	2	3	0	2	21
11/21	GW	33	6-13	3-6	6-6	5	6	0	2	21
11/23	SCU	35	8-18	5-11	0-0	4	6	0	3	21
11/27	Missouri St.	27	10-21	5-11	1-2	3	6	0	1	26
11/28	Dayton	36	6-12	3-6	4-4	4	7	0	3	19
11/29	Purdue	39	3-13	2-6	9-9	6	5	0	0	17
12/13	Texas	36	7-19	1-6	6-7	5	6	0	2	21
12/16	Tennessee	31	7-13	1-3	4-4	7	4	1	1	19
12/19	Cornell	19	3-11	3-8	2-2	3	4	0	0	11
12/22	CSUB	23	3-8	1-4	2-4	4	7	0	0	9
12/28	Chattanooga	29	4-14	0-6	3-5	5	3	2	1	11
1/2	Arizona	26	1-6	0-3	2-2	3	4	0	3	4
1/4	Arizona State	31	2-11	0-2	3-4	4	1	0	1	7

Thompson's Career & 2015-16 Game Highs

Career (Last)	Category	15-16 (Last)
28 vs. Texas, 11/20/14	Points	26 vs. Missouri St., 11/27/15
7, 3x (vs. Tennessee, 12/16/15)	Rebounds	7 vs. Tennessee, 12/16/15
8 vs. California, 1/30/14	Assists	7, 2x (vs. CSUB, 12/22/15)
3, 5x (at Arizona, 1/2/16)	Steals	3, 3x (at Arizona, 1/2/16)
2, 2x (vs. Chattanooga, 12/28/15)	Blocks	2 vs. Chattanooga, 12/28/15
10 vs. Missouri St., 11/27/15	FG Made	10 vs. Missouri St., 11/27/15
22 vs. Texas, 11/20/14	FG Attempted	21 vs. Missouri St., 11/27/15
6 at Hawaii, 11/29/14	3PT Made	5, 2x (vs. Missouri St., 11/27/15)
11, 2x (vs. Missouri St., 11/27/15)	3PT Attempted	11, 2x (vs. Missouri St., 11/27/15)
12 at USC, 1/25/15	FT Made	9 vs. Purdue, 11/29/15
14 at USC, 1/25/15	FT Attempted	9 vs. Purdue, 11/29/15
43 vs. Texas, 11/20/14	Minutes	39 vs. Purdue, 11/29/15

Stanford Women's Basketball Individual Career History

Coffee, Shannon

Season	gp-gs	min/avg	Total		3-Point		F-Throws		Rebounds				Scoring							
			fg-fga	pct	fg-fga	pct	ft-fta	pct	off	def	tot	avg	pf	fo	ast	to	blk	stl	pts	avg
2015-16	8-0	32/4.0	7-16	.438	0-2	.000	3-13	.231	2	8	10	1.3	1	0	1	4	1	0	17	2.1
TOTAL	8-0	32/4.0	7-16	.438	0-2	.000	3-13	.231	2	8	10	1.3	1	0	1	4	1	0	17	2.1

Green, Alex

Season	gp-gs	min/avg	Total		3-Point		F-Throws		Rebounds				Scoring							
			fg-fga	pct	fg-fga	pct	ft-fta	pct	off	def	tot	avg	pf	fo	ast	to	blk	stl	pts	avg
2011-12	2-0	10/5.0	0-0	.000	0-0	.000	0-0	.000	1	1	2	1.0	1	0	1	1	0	0	0	0.0
2012-13	7-0	18/2.6	0-1	.000	0-0	.000	0-0	.000	0	2	2	0.3	1	0	0	2	0	1	0	0.0
2013-14	28-2	173/6.2	10-33	.303	4-14	.286	5-7	.714	2	11	13	0.5	18	0	16	12	0	5	29	1.0
2014-15	23-0	93/4.0	9-20	.450	0-6	.000	3-6	.500	2	5	7	0.3	5	0	9	5	0	8	21	0.9
2015-16	6-0	34/5.7	0-4	.000	0-3	.000	1-2	.500	2	3	5	0.8	4	0	3	2	0	1	1	0.2
TOTAL	66-2	328/5.0	19-58	.328	4-23	.174	9-15	.600	7	22	29	0.4	29	0	29	22	0	15	51	0.8

Johnson, Kailee

Season	gp-gs	min/avg	Total		3-Point		F-Throws		Rebounds				Scoring							
			fg-fga	pct	fg-fga	pct	ft-fta	pct	off	def	tot	avg	pf	fo	ast	to	blk	stl	pts	avg
2013-14	29-3	283/9.8	26-67	.388	8-20	.400	11-24	.458	20	28	48	1.7	41	1	16	24	9	10	71	2.4
2014-15	24-0	182/7.6	11-33	.333	0-0	.000	4-9	.444	14	25	39	1.6	26	0	4	16	13	6	26	1.1
2015-16	12-7	224/18.7	9-32	.281	1-6	.167	10-15	.667	16	32	48	4.0	23	0	15	7	6	10	29	2.4
TOTAL	65-10	689/10.6	46-132	.348	9-26	.346	25-48	.521	50	85	135	2.1	90	1	35	47	28	26	126	1.9

Johnson, Kaylee

Season	gp-gs	min/avg	Total		3-Point		F-Throws		Rebounds				Scoring							
			fg-fga	pct	fg-fga	pct	ft-fta	pct	off	def	tot	avg	pf	fo	ast	to	blk	stl	pts	avg
2014-15	36-28	850/23.6	77-148	.520	0-0	.000	57-103	.553	117	227	344	9.6	91	3	14	51	51	24	211	5.9
2015-16	14-7	213/15.2	20-32	.625	0-0	.000	15-29	.517	26	48	74	5.3	27	0	11	16	20	10	55	3.9
TOTAL	50-35	1063/21.3	97-180	.539	0-0	.000	72-132	.545	143	275	418	8.4	118	3	25	67	71	34	266	5.3

Lakhian, Kiran

Season	gp-gs	min/avg	Total		3-Point		F-Throws		Rebounds				Scoring							
			fg-fga	pct	fg-fga	pct	ft-fta	pct	off	def	tot	avg	pf	fo	ast	to	blk	stl	pts	avg
2012-13	11-0	17/1.5	2-2	1.000	0-0	.000	0-0	.000	1	3	4	0.4	1	0	0	2	0	1	4	0.4
2015-16	8-0	33/4.1	4-9	.444	3-4	.750	0-0	.000	2	5	7	0.9	0	0	1	2	2	1	11	1.4
TOTAL	19-0	50/2.6	6-11	.545	3-4	.750	0-0	.000	3	8	11	0.6	1	0	1	4	2	2	15	0.8

McCall, Erica

Season	gp-gs	min/avg	Total		3-Point		F-Throws		Rebounds				Scoring							
			fg-fga	pct	fg-fga	pct	ft-fta	pct	off	def	tot	avg	pf	fo	ast	to	blk	stl	pts	avg
2013-14	36-2	377/10.5	50-114	.439	0-0	.000	18-33	.545	42	74	116	3.2	45	0	10	30	21	5	118	3.3
2014-15	36-18	615/17.1	90-174	.517	0-0	.000	23-45	.511	78	118	196	5.4	50	0	8	35	50	8	203	5.6
2015-16	14-14	429/30.6	82-160	.513	0-0	.000	19-33	.576	43	87	130	9.3	21	1	7	20	29	14	183	13.1
TOTAL	86-34	1421/16.5	222-448	.496	0-0	.000	60-111	.541	163	279	442	5.1	116	1	25	85	100	27	504	5.9

McPhee, Brittany

Season	gp-gs	min/avg	Total		3-Point		F-Throws		Rebounds				Scoring							
			fg-fga	pct	fg-fga	pct	ft-fta	pct	off	def	tot	avg	pf	fo	ast	to	blk	stl	pts	avg
2014-15	30-8	298/9.9	33-92	.359	6-31	.194	32-41	.780	29	39	68	2.3	30	0	8	20	15	14	104	3.5
2015-16	13-0	213/16.4	26-71	.366	10-33	.303	21-30	.700	11	29	40	3.1	15	1	8	23	2	6	83	6.4
TOTAL	43-8	511/11.9	59-163	.362	16-64	.250	53-71	.746	40	68	108	2.5	45	1	16	43	17	20	187	4.3

Stanford Women's Basketball Individual Career History

Picknell, Tess

Season	gp-gs	min/avg	Total		3-Point		F-Throws		Rebounds				Scoring							
			fg-fga	pct	fg-fga	pct	ft-fta	pct	off	def	tot	avg	pf	fo	ast	to	blk	stl	pts	avg
2012-13	32-0	140/4.4	6-16	.375	0-0	.000	7-25	.280	9	39	48	1.5	19	0	3	8	15	1	19	0.6
2013-14	22-0	60/2.7	4-11	.364	0-0	.000	3-7	.429	3	21	24	1.1	12	0	2	7	1	2	11	0.5
2014-15	17-0	55/3.2	3-7	.429	0-0	.000	3-6	.500	6	12	18	1.1	8	0	0	5	3	0	9	0.5
2015-16	8-0	36/4.5	3-4	.750	0-0	.000	2-5	.400	5	8	13	1.6	5	0	4	4	8	0	8	1.0
TOTAL	79-0	291/3.7	16-38	.421	0-0	.000	15-43	.349	23	80	103	1.3	44	0	9	24	27	3	47	0.6

Roberson, Briana

Season	gp-gs	min/avg	Total		3-Point		F-Throws		Rebounds				Scoring							
			fg-fga	pct	fg-fga	pct	ft-fta	pct	off	def	tot	avg	pf	fo	ast	to	blk	stl	pts	avg
2013-14	19-1	126/6.6	11-27	.407	3-8	.375	6-10	.600	3	10	13	0.7	11	0	9	12	0	3	31	1.6
2014-15	36-6	597/16.6	71-168	.423	20-49	.408	70-83	.843	15	46	61	1.7	53	0	36	54	0	15	232	6.4
2015-16	14-14	359/25.6	38-105	.362	19-48	.396	18-25	.720	12	27	39	2.8	21	1	38	28	2	10	113	8.1
TOTAL	69-21	1082/15.7	120-300	.400	42-105	.400	94-118	.797	30	83	113	1.6	85	1	83	94	2	28	376	5.4

Romano, Alexa

Season	gp-gs	min/avg	Total		3-Point		F-Throws		Rebounds				Scoring							
			fg-fga	pct	fg-fga	pct	ft-fta	pct	off	def	tot	avg	pf	fo	ast	to	blk	stl	pts	avg
2015-16	7-0	34/4.9	2-6	.333	1-3	.333	0-0	.000	1	2	3	0.4	1	0	3	1	2	0	5	0.7
TOTAL	7-0	34/4.9	2-6	.333	1-3	.333	0-0	.000	1	2	3	0.4	1	0	3	1	2	0	5	0.7

Samuelson, Karlie

Season	gp-gs	min/avg	Total		3-Point		F-Throws		Rebounds				Scoring							
			fg-fga	pct	fg-fga	pct	ft-fta	pct	off	def	tot	avg	pf	fo	ast	to	blk	stl	pts	avg
2013-14	32-2	495/15.5	46-114	.404	32-92	.348	39-43	.907	4	33	37	1.2	34	0	43	21	4	13	163	5.1
2014-15	29-16	667/23.0	65-151	.430	41-103	.398	14-29	.483	14	55	69	2.4	40	0	28	31	3	15	185	6.4
2015-16	14-14	394/28.1	38-85	.447	28-69	.406	18-21	.857	14	34	48	3.4	26	0	22	14	3	15	122	8.7
TOTAL	75-32	1556/20.7	149-350	.426	101-264	.383	71-93	.763	32	122	154	2.1	100	0	93	66	10	43	470	6.3

Smith, Alanna

Season	gp-gs	min/avg	Total		3-Point		F-Throws		Rebounds				Scoring							
			fg-fga	pct	fg-fga	pct	ft-fta	pct	off	def	tot	avg	pf	fo	ast	to	blk	stl	pts	avg
2015-16	14-0	197/14.1	39-76	.513	14-36	.389	16-27	.593	14	27	41	2.9	29	0	4	22	12	2	108	7.7
TOTAL	14-0	197/14.1	39-76	.513	14-36	.389	16-27	.593	14	27	41	2.9	29	0	4	22	12	2	108	7.7

Sniezek, Marta

Season	gp-gs	min/avg	Total		3-Point		F-Throws		Rebounds				Scoring							
			fg-fga	pct	fg-fga	pct	ft-fta	pct	off	def	tot	avg	pf	fo	ast	to	blk	stl	pts	avg
2015-16	14-2	220/15.7	9-27	.333	0-5	.000	15-22	.682	5	21	26	1.9	9	0	25	23	0	11	33	2.4
TOTAL	14-2	220/15.7	9-27	.333	0-5	.000	15-22	.682	5	21	26	1.9	9	0	25	23	0	11	33	2.4

Thompson, Lili

Season	gp-gs	min/avg	Total		3-Point		F-Throws		Rebounds				Scoring							
			fg-fga	pct	fg-fga	pct	ft-fta	pct	off	def	tot	avg	pf	fo	ast	to	blk	stl	pts	avg
2013-14	36-33	899/25.0	103-250	.412	46-109	.422	48-65	.738	10	75	85	2.4	66	0	97	61	7	28	300	8.3
2014-15	35-33	1063/30.4	161-394	.409	45-121	.372	99-126	.786	16	90	106	3.0	54	0	81	78	7	30	466	13.3
2015-16	14-12	408/29.1	68-180	.378	29-83	.349	52-61	.852	11	47	58	4.1	24	0	64	43	3	19	217	15.5
TOTAL	85-78	2370/27.9	332-824	.403	120-313	.383	199-252	.790	37	212	249	2.9	144	0	242	182	17	77	983	11.6

Official Basketball Box Score -- Game Totals -- Final Statistics
Stanford vs UC Davis

11/13/15 7:30 PM at Davis, Calif. (The Pavilion)

Stanford 74 • 1-0

#	Player	Total			3-Ptr			Rebounds			PF	TP	A	TO	Blk	Stl	Min
		FG	FGA	FT	FTA	Off	Def	Tot									
05	Johnson, Kaylee	f	0-1	0-0	0-2	1	4	5	3	0	1	0	2	1	0	10	
24	McCall, Erica	f	4-14	0-0	2-4	5	6	11	1	10	0	1	2	1	2	26	
10	Roberson, Briana	g	6-12	3-4	0-0	2	2	4	0	15	3	0	0	1	23		
13	Sniezek, Marta	g	1-3	0-1	0-0	1	1	2	0	2	4	2	0	2	26		
44	Samuelson, Karlie	g	3-7	2-6	1-2	1	2	3	2	9	2	0	0	0	29		
01	Thompson, Lili	g	2-7	1-4	5-6	1	2	3	2	10	2	4	0	0	14		
02	Coffee, Shannon	g	2-2	0-0	1-1	0	1	1	0	5	0	1	0	0	3		
11	Smith, Alanna	g	6-11	1-4	0-0	1	0	1	3	13	0	0	1	0	16		
12	McPhee, Brittany	g	2-7	0-3	3-4	3	1	4	5	7	1	2	0	1	20		
22	Romano, Alexa	g	0-1	0-1	0-0	0	0	0	1	0	0	0	1	0	5		
25	Lakhian, Kiran	g	0-2	0-0	0-0	0	1	1	0	0	0	0	0	0	5		
32	Johnson, Kailee	g	1-4	0-1	1-2	0	4	4	3	3	1	0	2	1	18		
34	Picknell, Tess	g	0-0	0-0	0-0	1	1	2	0	0	2	1	2	0	5		
Team						3	3	6									
Totals			27-71	7-24	13-21	19	28	47	20	74	16	11	10	7	200		

FG % 1st Half: 11-36 30.6% 2nd half: 16-35 45.7% Game: 27-71 38.0%
 3FG % 1st Half: 2-10 20.0% 2nd half: 5-14 35.7% Game: 7-24 29.2%
 FT % 1st Half: 5-8 62.5% 2nd half: 8-13 61.5% Game: 13-21 61.9%

UC Davis 45 • 0-1

#	Player	Total			3-Ptr			Rebounds			PF	TP	A	TO	Blk	Stl	Min
		FG	FGA	FT	FTA	Off	Def	Tot									
10	Gianotti, Pele	f	1-7	0-4	1-2	1	9	10	1	3	0	4	0	2	34		
20	Marfone, Celia	f	0-4	0-1	0-0	2	1	3	1	0	0	0	1	0	20		
44	Doherty, Alyson	c	3-9	0-1	4-4	5	6	11	4	10	1	6	1	1	32		
04	Nagel, Rachel	g	5-16	4-10	4-4	1	4	5	3	18	0	3	0	0	25		
13	Nafeh, Dani	g	1-5	0-1	1-2	0	2	2	2	3	3	3	0	1	29		
01	Johnson, Heidi	g	0-3	0-0	0-0	1	1	2	1	0	1	0	0	0	6		
02	Eaton, Kourtney	g	1-4	0-3	0-0	0	0	0	1	2	2	1	0	1	14		
14	Eaton, Karley	g	0-0	0-0	0-0	0	0	0	0	0	0	0	0	0	3		
21	McGuire, Taylor	g	1-2	1-1	0-0	1	0	1	2	3	0	0	0	0	7		
22	Bertsch, Morgan	g	1-3	0-0	4-8	1	4	5	4	6	1	3	0	2	22		
24	Seyranian, Lauren	g	0-2	0-0	0-0	0	1	1	2	0	0	1	0	0	8		
Team						4	1	5									
Totals			13-55	5-21	14-20	16	29	45	21	45	8	21	2	7	200		

FG % 1st Half: 8-27 29.6% 2nd half: 5-28 17.9% Game: 13-55 23.6%
 3FG % 1st Half: 2-8 25.0% 2nd half: 3-13 23.1% Game: 5-21 23.8%
 FT % 1st Half: 6-8 75.0% 2nd half: 8-12 66.7% Game: 14-20 70.0%

Officials: Cathi Cornell, Gordon Torigoe, Danielle Johnson
 Technical fouls: Stanford-None. UC Davis-None.
 Attendance: 3366
 Ray Savorn (courtside technician)

Score by periods	1st	2nd	3rd	4th	Total
Stanford	18	11	31	14	74
UC Davis	15	9	8	13	45

Points	In	Off	2nd	Fast	Bench
STAN	36	24	14	4	11
UCD	6	12	7	2	11

Last FG - STAN 4th-01:29, UCD 4th-02:29.
 Largest lead - STAN by 34 4th-08:32, UCD by 4 1st-03:29.
 STAN led for 32:40. UCD led for 06:10. Game was tied for 01:10.

Official Basketball Box Score -- Game Totals -- Final Statistics
Stanford vs Gonzaga

11/15/15 1:00 PM at Spokane, WA (McCarthy Athletic Center)

Stanford 65 • 2-0

#	Player	Total			3-Ptr			Rebounds			PF	TP	A	TO	Blk	Stl	Min
		FG	FGA	FT	FTA	Off	Def	Tot									
05	Johnson, Kaylee	f	0-3	0-0	1-2	4	6	10	1	1	2	2	1	0	32		
24	McCall, Erica	f	9-17	0-0	5-11	5	8	13	0	23	0	0	1	4	35		
10	Roberson, Briana	g	1-6	0-2	1-1	0	2	2	2	3	5	2	1	0	35		
13	Sniezek, Marta	g	0-1	0-0	0-0	0	0	0	0	2	0	2	0	0	9		
44	Samuelson, Karlie	g	3-6	1-4	0-1	1	2	3	2	7	1	1	0	1	26		
01	Thompson, Lili	g	6-14	4-7	5-6	0	2	4	21	3	1	0	2	29			
11	Smith, Alanna	g	2-2	0-0	0-1	1	0	1	4	4	0	2	0	5			
12	McPhee, Brittany	g	2-7	1-2	1-2	1	4	5	1	6	1	1	0	0	21		
32	Johnson, Kailee	g	0-1	0-0	0-0	0	2	2	1	0	0	0	1	0	8		
Team						1	4	5									
Totals			23-57	6-15	13-24	13	30	43	17	65	12	11	4	7	200		

FG % 1st Half: 11-32 34.4% 2nd half: 12-25 48.0% Game: 23-57 40.4%
 3FG % 1st Half: 1-8 12.5% 2nd half: 5-7 71.4% Game: 6-15 40.0%
 FT % 1st Half: 4-9 44.4% 2nd half: 9-15 60.0% Game: 13-24 54.2%

Gonzaga 48 • 1-1

#	Player	Total			3-Ptr			Rebounds			PF	TP	A	TO	Blk	Stl	Min
		FG	FGA	FT	FTA	Off	Def	Tot									
23	Kudron, Kiara	f	2-2	0-0	1-2	2	5	7	4	5	1	6	2	0	33		
44	Cheslek, Shelby	c	2-4	0-0	4-8	4	3	7	2	8	0	1	2	0	30		
05	Stirton, Georgia	g	0-4	0-1	3-4	1	1	2	2	3	2	1	0	1	24		
14	Stach, Emma	g	2-10	0-2	0-0	1	3	4	1	4	3	0	0	0	25		
31	Tinkle, Elle	g	4-12	2-7	0-0	2	3	5	4	10	1	2	0	0	28		
01	Waters, Chelsea	g	0-0	0-0	0-0	1	1	2	1	0	0	0	0	1	9		
10	Templeton, Zhane	g	1-5	0-4	0-2	0	1	1	2	2	0	0	0	0	15		
11	Stockton, Laura	g	2-6	0-2	1-2	0	1	1	1	5	2	1	0	1	17		
13	Barta, Jill	g	5-15	1-5	0-2	3	5	8	4	11	0	1	0	1	18		
20	Bosch, Kacie	g	0-0	0-0	0-0	0	0	0	0	0	0	0	0	0	1		
Team						2	5	7									
Totals			18-58	3-21	9-20	16	28	44	21	48	9	14	4	4	200		

FG % 1st Half: 11-29 37.9% 2nd half: 7-29 24.1% Game: 18-58 31.0%
 3FG % 1st Half: 2-11 18.2% 2nd half: 1-10 10.0% Game: 3-21 14.3%
 FT % 1st Half: 3-8 37.5% 2nd half: 6-12 50.0% Game: 9-20 45.0%

Officials: Anita Ortega, Kyle Bacon, In'Fini Robinson
 Technical fouls: Stanford-None. Gonzaga-None.
 Attendance: 6000

Score by periods	1st	2nd	3rd	4th	Total
Stanford	12	15	14	24	65
Gonzaga	12	15	11	10	48

Points	In	Off	2nd	Fast	Bench
STAN	26	9	9	2	31
GON	22	10	8	4	18

Last FG - STAN 4th-04:02, GON 4th-07:01.
 Largest lead - STAN by 17 4th-00:37, GON by 5 1st-07:55.
 STAN led for 16:55. GON led for 18:23. Game was tied for 04:42.

Official Basketball Box Score -- Game Totals -- Final Statistics
George Washington vs Stanford

11/21/15 12:00 PM at Stanford, Calif. (Maples Pavilion)

George Washington 63 • 2-1

#	Player	Total			3-Ptr			Rebounds			PF	TP	A	TO	Blk	Stl	Min
		FG	FGA	FT	FTA	Off	Def	Tot									
03	Washington, Caira	f	5-15	0-0	0-0	4	5	9	2	10	0	1	0	0	33		
25	Prange, Kelli	f	2-15	0-2	4-4	5	3	8	1	8	0	2	1	0	21		
35	Jones, Jonquel	f	11-18	5-6	0-0	7	10	17	5	27	1	5	3	0	34		
04	Chase, Lauren	g	4-13	1-2	0-2	1	2	3	2	9	4	1	0	2	27		
13	Cranshaw, Shannon	g	1-7	1-5	0-0	0	1	1	1	3	1	2	0	1	25		
05	Brown, Aaliyah	g	0-2	0-2	0-0	0	0	0	0	0	0	0	0	0	4		
14	Anderson, Dalacy	g	0-1	0-1	0-0	0	0	0	0	0	0	0	0	0	6		
15	Farmer, Mia	g	0-0	0-0	0-0	0	0	0	0	0	0	0	0	0	1		
21	Bautista, Mei-Lyn	g	1-2	1-2	0-0	0	0	0	0	3	0	0	0	0	4		
22	Matthews, Jada	g	0-0	0-0	0-0	0	1	1	0	0	0	1	0	0	3		
24	Chandler, Alexis	g	0-3	0-1	0-0	1	3	4	0	0	1	0	2	1	16		
34	Cummings, Brianna	g	1-9	1-2	0-0	4	1	5	3	3	0	1	0	0	26		
Team						2	0	2									
Totals			25-85	9-23	4-6	24	26	50	14	63	6	14	4	5	200		

FG % 1st Half: 13-50 26.0% 2nd half: 12-35 34.3% Game: 25-85 29.4%
 3FG % 1st Half: 4-14 28.6% 2nd half: 5-9 55.6% Game: 9-2

Official Basketball Box Score -- Game Totals -- Final Statistics

Missouri State vs Stanford
11/27/15 1:30 PM at Estero, Fla. (Germain Arena)

Missouri State 65 • 2-3

#	Player	Total			3-Ptr			Rebounds			PF	TP	A	TO	Blk	Stl	Min
		FG-FGA	FG-FGA	FT-FTA	FG-FGA	FG-FGA	FT-FTA	Off	Def	Tot							
04	Williams, Kenzie	* 5-16	0-3	2-2	2	1	3	3	12	4	1	0	2	25			
12	Chvatal, Hillary	* 4-5	2-2	2-2	4	2	6	3	12	0	1	0	0	26			
21	Buckley, Aubrey	* 1-5	1-2	1-2	2	3	5	1	4	0	1	0	2	23			
22	Snow, Tyonna	* 5-15	1-2	2-4	2	0	2	1	13	0	2	1	1	20			
25	Rose, Riley	* 0-1	0-1	0-0	0	0	0	0	0	2	1	0	1	12			
01	Gitzen, Danielle	* 1-5	0-1	0-0	2	0	2	1	2	1	0	0	1	14			
02	Hughes, Lexi	* 1-6	0-4	0-0	0	1	1	0	2	1	2	0	0	15			
05	Fruendt, Liza	* 4-11	2-6	0-0	0	3	3	1	10	0	2	0	0	20			
15	Vander Weide, Grace	* 1-3	0-1	0-0	0	2	2	0	2	2	1	0	2	19			
34	Swartz, Rachel	* 1-2	0-1	0-0	2	1	3	0	2	0	1	0	0	10			
40	Osemenam, Onye	* 3-4	0-0	0-0	1	1	2	2	6	0	1	0	0	16			
Team					6	5	11										
Totals		26-73	6-23	7-10	21	19	40	12	65	10	13	1	9	200			

FG % 1st Half: 11-33 33.3% 2nd half: 15-40 37.5% Game: 26-73 35.6%
 3FG % 1st Half: 3-13 23.1% 2nd half: 3-10 30.0% Game: 11-24 45.8%
 FT % 1st Half: 5-8 62.5% 2nd half: 2-2 100.0% Game: 7-10 70.0%

Stanford 82 • 4-1

#	Player	Total			3-Ptr			Rebounds			PF	TP	A	TO	Blk	Stl	Min
		FG-FGA	FG-FGA	FT-FTA	FG-FGA	FG-FGA	FT-FTA	Off	Def	Tot							
01	Thompson, Lili	* 10-21	5-11	1-2	2	1	3	0	26	6	1	0	1	27			
05	Johnson, Kaylee	* 1-1	0-0	3-4	2	6	8	2	5	0	4	3	0	16			
10	Roberson, Briana	* 6-10	4-6	2-2	0	2	2	2	18	3	2	0	2	28			
24	McCall, Erica	* 4-7	0-0	1-2	3	7	10	1	9	1	0	1	0	31			
44	Samuelson, Karlie	* 5-9	5-7	0-0	2	3	5	1	15	2	1	1	2	29			
02	Coffee, Shannon	* 0-1	0-1	0-2	0	1	1	0	0	0	0	0	0	3			
11	Smith, Alanna	* 0-3	0-1	0-0	3	0	3	1	0	0	1	0	0	8			
12	McPhee, Brittany	* 2-5	1-3	0-0	2	1	3	1	5	1	0	0	1	15			
13	Sniezek, Marta	* 2-4	0-1	0-0	0	2	2	0	4	3	2	0	3	18			
22	Romano, Alexa	* 0-1	0-1	0-0	0	0	0	0	0	0	1	0	0	2			
25	Lakhian, Kiran	* 0-0	0-0	0-0	0	0	0	0	0	0	0	1	0	2			
32	Johnson, Kailee	* 0-3	0-2	0-0	1	1	2	1	0	1	2	0	0	21			
Team					1	2	3										
Totals		30-65	15-33	7-12	16	26	42	9	82	17	15	6	9	200			

FG % 1st Half: 15-35 42.9% 2nd half: 15-30 50.0% Game: 30-65 46.2%
 3FG % 1st Half: 8-18 44.4% 2nd half: 7-15 46.7% Game: 15-33 45.5%
 FT % 1st Half: 6-10 60.0% 2nd half: 1-2 50.0% Game: 7-12 58.3%

Officials: Gina Cross, Kevin Pethel, Mark McClenny
 Technical fouls: Missouri State-None. Stanford-None.
 Attendance: 1006
 Gulf Coast Showcase - Game 2

Score by periods	1st	2nd	3rd	4th	Total	Points	In	Off	2nd	Fast	Bench
Missouri State	16	14	22	13	65	30	16	12	6	24	24
Stanford	22	22	22	16	82	22	14	17	8	9	9

Last FG - MSU 4th-00:13, STAN 4th-01:52.
 Largest lead - MSU by 11st-04:18, STAN by 23 2nd-03:36.
 MSU led for 00:21. STAN led for 38:32. Game was tied for 00:52.

Official Basketball Box Score -- Game Totals -- Final Statistics

Stanford vs Dayton
11/28/15 5:00 PM at Estero, Fla. (Germain Arena)

Stanford 74 • 5-1

#	Player	Total			3-Ptr			Rebounds			PF	TP	A	TO	Blk	Stl	Min
		FG-FGA	FG-FGA	FT-FTA	FG-FGA	FG-FGA	FT-FTA	Off	Def	Tot							
01	Thompson, Lili	* 6-12	3-6	4-4	0	4	3	4	19	7	5	0	3	36			
05	Johnson, Kaylee	* 0-0	0-0	0-0	0	1	1	1	0	0	2	0	0	3			
10	Roberson, Briana	* 1-6	0-2	3-4	2	1	3	1	5	1	4	0	1	26			
24	McCall, Erica	* 8-13	0-0	0-0	2	7	9	3	16	2	4	0	0	37			
44	Samuelson, Karlie	* 2-7	2-7	2-2	1	3	4	3	8	2	1	0	1	39			
11	Smith, Alanna	* 7-9	6-8	2-4	0	4	4	2	22	1	1	2	0	21			
12	McPhee, Brittany	* 1-1	0-0	0-0	1	0	1	0	2	0	1	0	0	6			
13	Sniezek, Marta	* 0-2	0-1	0-0	0	2	2	0	0	2	0	0	0	13			
32	Johnson, Kailee	* 0-2	0-0	2-2	2	0	2	0	2	3	0	1	0	19			
Team					2	4	6										
Totals		25-52	11-24	13-16	10	26	36	14	74	17	20	3	5	200			

FG % 1st Half: 13-25 52.0% 2nd half: 12-27 44.4% Game: 25-52 48.1%
 3FG % 1st Half: 3-9 33.3% 2nd half: 8-15 53.3% Game: 11-24 45.8%
 FT % 1st Half: 4-6 66.7% 2nd half: 9-10 90.0% Game: 13-16 81.3%

Dayton 66 • 4-1

#	Player	Total			3-Ptr			Rebounds			PF	TP	A	TO	Blk	Stl	Min
		FG-FGA	FG-FGA	FT-FTA	FG-FGA	FG-FGA	FT-FTA	Off	Def	Tot							
02	Deane, Amber	* 4-14	3-7	0-0	2	1	3	3	11	2	1	0	0	35			
14	Burdette, Jenna	* 5-12	3-10	0-0	2	2	4	1	13	2	3	0	0	34			
22	Austria, Kelley	* 5-8	0-2	2-2	1	0	1	1	12	3	1	0	4	36			
23	Dennis, Madely	* 3-10	1-5	0-0	0	3	3	1	7	2	0	0	1	18			
55	Grant-Allen, Saicha	* 3-8	0-0	3-5	4	3	7	4	9	1	0	0	0	23			
10	Cvitkovic, Andrijana	* 2-6	0-2	0-0	0	0	0	3	4	0	2	0	0	18			
12	Cornelle, Jodie	* 1-4	0-0	0-0	1	7	8	1	2	2	5	0	1	21			
24	Cannatelli, Lauren	* 2-2	2-2	0-0	0	0	0	1	6	1	0	0	0	4			
34	Layfield, Javonna	* 1-2	0-1	0-0	1	0	1	3	2	0	1	0	0	11			
Team					2	3	5										
Totals		26-66	9-29	5-7	13	19	32	18	66	13	13	0	6	200			

FG % 1st Half: 16-34 47.1% 2nd half: 10-32 31.3% Game: 26-66 39.4%
 3FG % 1st Half: 7-19 36.8% 2nd half: 2-10 20.0% Game: 9-29 31.0%
 FT % 1st Half: 1-3 33.3% 2nd half: 4-4 100.0% Game: 5-7 71.4%

Officials: Mark Zentz, Amy Bonner, Troy Winders
 Technical fouls: Stanford-None. Dayton-None.
 Attendance: 1407
 Gulf Coast Showcase - Game 7

Score by periods	1st	2nd	3rd	4th	Total	Points	In	Off	2nd	Fast	Bench
Stanford	14	19	20	21	74	22	18	15	10	0	26
Dayton	24	16	14	12	66	22	27	11	5	14	14

Last FG - STAN 4th-00:27, UD 4th-04:21.
 Largest lead - STAN by 8 4th-07:16, UD by 12 2nd-09:19.
 STAN led for 13:02. UD led for 24:47. Game was tied for 01:50.

Official Basketball Box Score -- Game Totals -- Final Statistics

Purdue vs Stanford
11/29/15 7:30 PM at Estero, Fla. (Germain Arena)

Purdue 65 • 5-1

#	Player	Total			3-Ptr			Rebounds			PF	TP	A	TO	Blk	Stl	Min
		FG-FGA	FG-FGA	FT-FTA	FG-FGA	FG-FGA	FT-FTA	Off	Def	Tot							
01	Morrisette, Ashley	* 5-13	4-11	2-2	0	2	2	4	16	2	2	0	1	37			
04	Thornton, Torrie	* 0-1	0-0	3-4	0	0	0	1	3	0	0	0	1	14			
13	Perry, Bridget	* 4-6	0-0	0-0	1	3	4	5	8	2	2	0	3	26			
24	Keys, Andrea	* 2-8	0-1	0-0	2	1	3	1	4	2	2	1	0	33			
25	Wilson, April	* 7-19	3-7	0-0	0	5	5	4	17	5	2	0	1	42			
03	Murphy, Tiara	* 1-1	0-0	0-0	0	0	0	2	2	0	1	0	0	2			
05	Hall, Justine	* 0-1	0-1	0-0	0	0	0	1	0	0	0	0	0	5			
10	Hamby, Hayden	* 2-4	2-3	1-2	0	2	2	1	7	1	1	0	0	18			
12	Kiesler, Nora	* 3-7	0-0	0-0	5	4	9	1	6	0	1	0	0	29			
20	McBryde, Dominique	* 0-2	0-0	2-4	2	5	7	2	2	1	0	1	0	19			
Team					3	3	6										
Totals		24-62	9-23	8-12	13	25	38	22	65	13	11	2	6	225			

FG % 1st Half: 9-29 31.0% 2nd half: 14-28 50.0% OT: 1-5 20.0% Game: 24-62 38.7%
 3FG % 1st Half: 1-7 14.3% 2nd half: 7-13 53.8% OT: 1-3 33.3% Game: 9-23 39.1%
 FT % 1st Half: 2-4 50.0% 2nd half: 3-4 75.0% OT: 3-4 75.0% Game: 8-12 66.7%

Stanford 71 • 6-1

#	Player	Total			3-Ptr			Rebounds			PF	TP	A	TO	Blk	Stl	Min
		FG-FGA	FG-FGA	FT-FTA	FG-FGA	FG-FGA	FT-FTA	Off	Def	Tot							
01	Thompson, Lili	* 3-13	2-6	9-9	2	4	6	2	17	5	4	0	0	39			
05	Johnson, Kaylee	* 0-0	0-0	0-0	0	0	0	3	0	1	0	0	0	6			
10	Roberson, Briana	* 7-12	5-6	7-7	1	4	5	1	26	1	2	0	1	42			
24	McCall, Erica	* 4-13	0-0	4-4	2	9											

Official Basketball Box Score -- Game Totals -- Final Statistics
Tennessee vs Stanford
12/16/15 6:00 PM at Stanford, Calif. (Maples Pavilion)

Tennessee 55 • 7-3

#	Player	Total			3-Ptr			Rebounds			PF	TP	A	TO	Blk	Stl	Min
		FG	FGA	FT	FTA	Off	Def	Tot									
12	Graves, Bashaara	f	2-6	0-0	6-7	2	3	5	2	10	3	1	0	4	32		
31	Nared, Jaime	f	4-12	2-6	1-2	1	2	3	3	12	0	1	0	2	22		
21	Russell, Mercedes	c	3-6	0-0	2-4	4	4	8	1	7	0	4	0	0	25		
11	DeShields, Diamond	g	6-16	0-3	0-0	0	4	4	4	12	1	1	1	1	28		
14	Carter, Andraya	g	1-5	0-0	2-2	2	2	5	4	2	0	0	0	0	35		
00	Reynolds, Jordan		0-2	0-1	1-2	2	1	3	4	1	1	2	0	0	20		
10	Jackson, MeMe		1-3	0-1	0-0	0	0	0	2	2	0	1	0	0	7		
13	Dunbar, Kortney		1-2	1-2	0-0	0	0	0	0	3	0	1	0	0	6		
20	Cooper, Te'a		2-11	0-1	0-0	0	0	0	4	4	2	2	0	1	25		
Team						2	4	6									
Totals			20-63	3-14	12-17	13	18	31	25	55	9	14	2	8	200		

1st - FG %: 5-17 29.4% 2nd: 4-17 23.5% 3rd: 2-11 18.2% 4th: 9-18 50.0% Game: 20-63 31.7% Deadball Rebounds 3,1
 3FG %: 0-1 0.0% 0-4 0.0% 1-4 25.0% 2-5 40.0% 3-14 21.4%
 FT %: 1-2 50.0% 1-2 50.0% 5-6 83.3% 5-7 71.4% 12-17 70.6%

Stanford 69 • 7-2

#	Player	Total			3-Ptr			Rebounds			PF	TP	A	TO	Blk	Stl	Min
		FG	FGA	FT	FTA	Off	Def	Tot									
24	McCall, Erica	f	7-12	0-0	0-1	4	6	10	3	14	0	2	1	1	36		
32	Johnson, Kailee	f	1-2	0-0	1-2	0	2	2	2	3	0	2	0	1	19		
01	Thompson, Lili	g	7-13	1-3	4-4	1	6	7	0	19	4	5	1	1	31		
10	Roberson, Briana	g	1-4	0-2	0-2	0	2	2	1	2	1	3	0	0	17		
44	Samuelson, Karlie	g	2-7	1-5	2-2	0	3	3	1	7	1	2	0	2	37		
00	Green, Alex		3-4	0-0	4-6	2	3	5	2	10	0	2	0	0	16		
02	Coffee, Shannon		1-2	0-0	2-2	1	0	1	1	4	0	0	0	1	8		
05	Johnson, Kaylee		0-1	0-1	1-2	0	4	4	1	1	0	2	0	0	7		
11	Smith, Alanna		2-3	0-0	5-9	1	2	3	1	9	4	3	0	2	29		
Team						1	4	5									
Totals			24-48	2-11	19-30	10	32	42	12	69	10	20	4	8	200		

1st - FG %: 7-12 58.3% 2nd: 5-11 45.5% 3rd: 4-13 30.8% 4th: 8-12 66.7% Game: 24-48 50.0% Deadball Rebounds 6,1
 3FG %: 0-3 0.0% 0-3 0.0% 1-2 50.0% 1-2 50.0% 2-11 18.2%
 FT %: 3-4 75.0% 8-10 80.0% 4-4 100.0% 4-12 33.3% 19-30 63.3%

Officials: Charles Gonzalez, Brenda Pantoja, Anita Ortega
 Technical fouls: Tennessee-None. Stanford-None.
 Attendance: 3768

Score by periods	1st	2nd	3rd	4th	Total
Tennessee	11	9	10	25	55
Stanford	17	18	13	21	69

In Points Off 2nd Fast
 TENN 26 18 6 8 10
 STAN 40 10 12 8 24

Score tied - 1 time.
 Lead changed - 1 time.

Last FG - TENN 4th-00:56, STAN 4th-01:34.
 Largest lead - TENN by 2 1st-09:50, STAN by 21 3rd-02:05.
 TENN led for 00:50. STAN led for 38:20. Game was tied for 00:50.

Official Basketball Box Score -- Game Totals -- Final Statistics
Cornell vs Stanford
12/19/15 2:00 PM at Stanford, Calif. (Maples Pavilion)

Cornell 38 • 5-5

#	Player	Total			3-Ptr			Rebounds			PF	TP	A	TO	Blk	Stl	Min
		FG	FGA	FT	FTA	Off	Def	Tot									
24	Marshall, Nia	f	2-8	1-1	3-8	1	3	4	3	8	0	1	0	1	28		
32	Aston, Nicholle	f	4-15	0-0	0-2	1	2	3	1	8	0	1	0	1	33		
05	Campbell, Maddie	g	0-6	0-0	0-0	3	2	5	3	0	3	0	0	1	33		
22	Moran, Kerri	g	3-9	0-0	0-0	1	3	4	1	6	4	1	0	0	31		
44	DeLuc, Megan	g	2-7	2-4	0-0	0	3	3	2	6	2	5	0	0	29		
03	DePalma, Taylor		0-2	0-1	0-0	0	1	1	0	0	0	1	0	0	4		
10	Dennis, Janee		1-2	1-1	0-0	0	2	2	0	3	0	0	0	0	5		
13	Shelquist, Caroline		2-9	2-8	0-0	0	0	0	0	3	6	1	0	0	21		
14	Knox, Marisa		0-0	0-0	0-0	0	0	0	0	0	0	0	0	0	3		
23	Clement, Samantha		0-4	0-1	1-2	1	0	1	1	1	0	0	0	1	13		
Team						2	3	5									
Totals			14-62	6-16	4-12	9	19	28	14	38	9	11	0	4	200		

1st - FG %: 2-15 13.3% 2nd: 3-15 20.0% 3rd: 6-15 40.0% 4th: 9-17 52.9% Game: 14-62 22.6% Deadball Rebounds 6,1
 3FG %: 1-5 20.0% 1-3 33.3% 3-5 60.0% 1-3 33.3% 6-16 37.5%
 FT %: 1-2 50.0% 0-4 0.0% 0-0 0.0% 3-6 50.0% 4-12 33.3%

Stanford 93 • 8-2

#	Player	Total			3-Ptr			Rebounds			PF	TP	A	TO	Blk	Stl	Min
		FG	FGA	FT	FTA	Off	Def	Tot									
24	McCall, Erica	f	6-9	0-0	0-0	3	4	7	0	12	0	0	0	0	16		
32	Johnson, Kailee	f	1-1	0-0	0-0	1	5	6	1	2	2	0	0	1	16		
01	Thompson, Lili	g	3-11	3-8	2-2	0	3	3	0	11	4	1	0	0	19		
10	Roberson, Briana	g	4-7	1-3	0-0	0	3	3	0	9	3	1	0	0	18		
44	Samuelson, Karlie	g	3-3	3-3	2-2	1	3	4	0	11	3	0	1	2	16		
00	Green, Alex		0-2	0-1	0-0	0	1	1	1	0	1	0	0	0	14		
02	Coffee, Shannon		1-4	0-0	0-0	1	3	4	1	2	1	1	0	0	9		
05	Johnson, Kaylee		4-4	0-0	2-2	5	6	11	2	10	3	0	3	1	16		
11	Smith, Alanna		3-6	0-1	6-8	1	2	3	2	12	0	2	1	1	14		
12	McPhee, Brittany		2-7	0-3	5-6	0	1	1	1	9	0	1	0	1	15		
13	Sniezek, Marta		0-2	0-0	4-4	1	4	5	1	4	1	0	0	0	16		
22	Romano, Alexa		1-3	0-0	0-0	0	2	2	0	2	1	0	0	0	12		
25	Lakhian, Kiran		3-4	3-4	0-0	0	2	2	0	9	1	0	1	0	10		
34	Picknell, Tess		0-0	0-0	0-0	1	1	2	0	0	1	0	1	0	9		
Team						0	0	0									
Totals			31-63	10-23	21-24	14	40	54	11	93	20	8	6	7	200		

1st - FG %: 9-17 52.9% 2nd: 8-16 50.0% 3rd: 6-16 37.5% 4th: 8-14 57.1% Game: 31-63 49.2% Deadball Rebounds 1,1
 3FG %: 3-7 42.9% 4-7 57.1% 0-5 0.0% 3-4 75.0% 31-63 43.5%
 FT %: 6-6 100.0% 6-6 100.0% 7-8 87.5% 2-4 50.0% 21-24 87.5%

Officials: Michael Price, Alecia Murray, Shelley Nakasone
 Technical fouls: Cornell-None. Stanford-None.
 Attendance: 3015

Score by periods	1st	2nd	3rd	4th	Total
Cornell	6	7	15	10	38
Stanford	27	26	19	21	93

In Points Off 2nd Fast
 COR 10 3 1 0 10
 STAN 32 11 22 4 48

Score tied - 0 times.
 Lead changed - 0 times.

Last FG - COR 4th-00:27, STAN 4th-01:57.
 Largest lead - COR None, STAN by 58 4th-01:57.
 COR led for 00:00. STAN led for 39:12. Game was tied for 00:41.

Official Basketball Box Score -- Game Totals -- Final Statistics
CSU Bakersfield vs Stanford
12/22/15 2:00 PM at Stanford, Calif. (Maples Pavilion)

CSU Bakersfield 41 • 2-11

#	Player	Total			3-Ptr			Rebounds			PF	TP	A	TO	Blk	Stl	Min
		FG	FGA	FT	FTA	Off	Def	Tot									
15	Williams, Erika	f	0-6	0-3	0-0	0	3	3	0	0	1	1	0	0	18		
21	Zempare, Batabe	f	2-4	0-0	2-2	1	5	6	2	6	0	1	0	0	16		
01	Shannon, Alyssa	g	1-4	0-0	2-2	2	1	3	3	4	2	2	0	1	37		
13	Vines, Dajj	g	2-6	2-4	0-2	0	4	4	3	6	0	1	0	0	18		
22	Carmon, Airica	g	2-11	0-2	0-0	0	2	2	3	4	0	0	0	0	15		
00	Fears, Jerice		0-0	0-0	0-0	1	0	1	1	0	0	0	0	1	7		
02	Sims, Brittany		1-7	0-1	0-0	3	4	7	3	2	1	0	0	1	22		
04	Torres-Rodriguez, He		0-0	0-0	0-0	1	0	1	0	0	0	1	0	0	3		
10	Kleist, Kerl		0-8	0-3	0-0	0	3	3	5	0	1	0	1	2	16		
11	Walters, Addi		3-12	2-7	4-4	0	1	1	2	12	1	1	0	2	33		
23	Carter, Tylinn		2-10	1-4	2-2	1	1	2	4	7	0	0	0	0	15		
Team						3	0	3									
Totals			13-68	5-24	10-12	12	24	36	27	41	5	11	0	7	200		

1st - FG %: 4-13 30.8% 2nd: 2-18 11.1% 3rd: 5-17 29.4% 4th: 2-20 10.0% Game: 13-68 19.1% Deadball Rebounds 1
 3FG %: 2-8 25.0% 2-7 28.6% 1-4 25.0% 0-5 0.0% 5-24 20.8%
 FT %: 2-2 100.0% 0-2 0.0% 4-4 100.0% 4-4 100.0% 10-12 83.3%

Stanford 83 • 9-2

#	Player	Total			3-Ptr			Rebounds			PF	TP	A	TO	Blk	Stl	Min
		FG	FGA	FT	FTA	Off	Def	Tot									
24	McCall, Erica	f	7-11	0-0	1-1	2	8	10	0	15	0	3	4	1	22		
32	Johnson, Kailee	f	1-5	0-1	0-0	1	7	8	3	2	2	0	1	0	18		

Official Basketball Box Score -- Game Totals -- Final Statistics
Stanford vs Arizona
1/2/16 3:00 PM at Tucson, Ariz. (McKale Center)

Stanford 59 • 11-2, 1-0

##	Player	Total			3-Ptr			Rebounds			PF	TP	A	TO	Blk	Stl	Min
		FG	FGA	FT	FTA	FG	FGA	FT	FTA	Off							
24	McCall, Erica	f	3-4	0-0	0-0	1	3	4	0	6	0	1	2	1	19		
32	Johnson, Kailee	f	0-1	0-0	2-4	2	5	7	2	2	1	0	1	2	19		
01	Thompson, Lili	g	1-6	0-3	2-2	0	3	3	3	4	4	6	0	3	26		
10	Roberson, Briana	g	1-6	0-5	1-2	1	0	1	1	3	2	2	0	0	19		
44	Samuelson, Karlie	g	0-1	0-1	0-0	3	3	6	3	0	1	0	0	0	18		
00	Green, Alex		0-1	0-1	0-0	0	1	1	1	0	0	1	0	0	5		
02	Coffee, Shannon		0-2	0-0	0-0	0	0	0	0	0	0	1	0	0	3		
05	Johnson, Kaylee		0-1	0-0	3-6	1	5	6	3	3	1	0	2	1	19		
11	Smith, Alanna		6-8	4-5	0-0	1	3	4	3	16	0	3	2	0	17		
12	McPhee, Brittany		6-10	3-6	6-8	0	1	1	0	21	1	2	1	1	26		
13	Sniezek, Marta		2-3	0-0	0-0	0	4	4	2	4	3	3	0	0	18		
22	Romano, Alexa		0-0	0-0	0-0	1	0	1	0	0	0	0	0	0	3		
25	Lakhian, Kiran		0-0	0-0	0-0	0	1	1	0	0	0	1	0	0	3		
34	Picknell, Tess		0-0	0-0	0-0	1	1	1	0	0	2	1	0	0	5		
	Team					2	3	5							1		
	Totals		19-43	7-21	14-22	13	32	45	19	59	13	23	9	8	200		
	1st - FG %:	8-11	72.7%	2nd: 7-14	50.0%	3rd: 2-11	18.2%	4th: 2-7	28.6%	Game: 19-43	44.2%	Deadball					
	3FG %:	1-1	100.0%	3-6	50.0%	2-10	20.0%	1-4	25.0%	7-21	33.3%	Rebounds					
	FT %:	3-5	60.0%	2-3	66.7%	5-10	50.0%	4-4	100.0%	14-22	63.6%				3		

Arizona 34 • 9-4, 0-1

##	Player	Total			3-Ptr			Rebounds			PF	TP	A	TO	Blk	Stl	Min
		FG	FGA	FT	FTA	FG	FGA	FT	FTA	Off							
21	Graham, Destiny	f	0-3	0-0	0-0	1	1	2	3	0	2	1	0	2	20		
24	Jones, LaBrittney	f	3-13	0-2	5-8	2	3	5	1	11	1	4	1	2	30		
03	Griffey, Taryn	g	0-3	0-1	0-0	1	1	2	2	0	0	0	0	0	13		
15	Cannon, Keyahndra	g	1-6	0-2	1-1	1	2	3	1	3	1	3	0	0	27		
33	Bennett, Jalea	g	0-2	0-0	0-2	1	2	3	2	0	0	1	0	1	17		
10	Evans, Lauren		1-2	0-0	3-4	1	0	1	1	5	3	1	0	1	25		
14	Washington, Malena		2-11	1-5	0-0	0	1	1	0	5	0	2	0	1	21		
20	Bell, Farrin		0-1	0-0	0-0	0	1	1	1	0	0	0	0	0	11		
23	Miller, Michal		1-4	0-0	0-0	1	0	1	1	2	0	0	0	1	6		
31	James, Dejza		2-6	0-0	2-4	3	2	5	3	6	0	0	0	1	18		
42	Coleman, A'Shanti		1-2	0-0	0-0	1	2	3	1	2	0	0	0	0	12		
	Team					1	1	2							1		
	Totals		11-53	1-10	11-19	13	16	29	16	34	7	13	1	9	200		
	1st - FG %:	3-13	23.1%	2nd: 2-14	14.3%	3rd: 2-11	18.2%	4th: 4-15	26.7%	Game: 11-53	20.8%	Deadball					
	3FG %:	0-2	0.0%	0-2	0.0%	0-2	0.0%	1-4	25.0%	1-10	10.0%	Rebounds					
	FT %:	2-4	50.0%	3-3	100.0%	3-6	50.0%	3-6	50.0%	11-19	57.9%				5		

Officials: Charles Gonzalez, Clarke Stevens, Tiffany Bird
 Technical fouls: Stanford-None. Arizona-None.
 Attendance: 1491

Score by periods	1st	2nd	3rd	4th	Total
Stanford	20	19	11	9	59
Arizona	8	7	7	12	34

Last FG - STAN 4th-03:35, ARIZ 4th-00:39.
 Largest lead - STAN by 32 4th-06:17, ARIZ None.
 STAN led for 39:32. ARIZ led for 00:00. Game was tied for 00:28.

Points	In	Off	2nd	Fast	Bench
	Paint	T/O	Chance	Break	
STAN	18	8	5	14	44
ARIZ	12	11	7	2	20

Score tied - 0 times.
 Lead changed - 0 times.

Official Basketball Box Score -- Game Totals -- Final Statistics
Stanford vs Arizona State
1/4/16 6:00 PM at Wells Fargo Arena (Tempe, Ariz.)

Stanford 31 • 11-3, 1-1

##	Player	Total			3-Ptr			Rebounds			PF	TP	A	TO	Blk	Stl	Min
		FG	FGA	FT	FTA	FG	FGA	FT	FTA	Off							
24	McCall, Erica	f	2-8	0-0	0-0	2	1	3	1	4	0	1	2	2	25		
32	Johnson, Kailee	f	1-3	0-0	2-2	2	2	4	2	4	1	0	0	1	24		
01	Thompson, Lili	g	2-11	0-2	3-4	1	3	4	2	7	1	3	0	1	31		
10	Roberson, Briana	g	0-6	0-2	1-2	0	3	3	2	1	1	0	0	0	25		
44	Samuelson, Karlie	g	2-4	1-3	0-0	0	3	3	1	5	1	0	0	3	29		
00	Green, Alex		0-0	0-0	0-0	0	0	0	0	0	0	0	0	0	2		
05	Johnson, Kaylee		2-3	0-0	0-0	1	2	3	3	4	1	4	1	0	17		
11	Smith, Alanna		1-3	0-1	0-2	0	1	1	2	2	0	3	1	0	13		
12	McPhee, Brittany		1-2	0-0	2-2	0	1	1	1	4	1	4	1	0	12		
13	Sniezek, Marta		0-3	0-1	0-0	1	0	1	0	0	1	2	0	1	18		
25	Lakhian, Kiran		0-0	0-0	0-0	0	0	0	0	0	0	0	0	0	2		
34	Picknell, Tess		0-0	0-0	0-0	0	0	0	0	0	1	0	0	0	2		
	Team					6	3	9							2		
	Totals		11-43	1-9	8-12	13	19	32	14	31	8	17	5	8	200		
	1st - FG %:	3-13	23.1%	2nd: 2-8	25.0%	3rd: 3-12	25.0%	4th: 3-10	30.0%	Game: 11-43	25.6%	Deadball					
	3FG %:	1-4	25.0%	0-0	0.0%	0-2	0.0%	0-3	0.0%	1-9	11.1%	Rebounds					
	FT %:	0-0	0.0%	2-2	100.0%	3-4	75.0%	3-6	50.0%	8-12	66.7%				2		

Arizona State 49 • 11-3, 2-0

##	Player	Total			3-Ptr			Rebounds			PF	TP	A	TO	Blk	Stl	Min
		FG	FGA	FT	FTA	FG	FGA	FT	FTA	Off							
21	Brunner, Sophie	f	5-10	0-0	2-2	5	5	10	1	12	1	3	1	2	31		
24	Moos, Kelsey	f	1-2	1-1	0-0	2	2	4	2	3	0	0	0	2	23		
00	Hempfen, Katie	g	1-3	1-2	3-4	1	1	2	4	6	5	2	0	1	28		
01	Hawkins, Arnecia	g	5-20	1-5	1-1	1	0	1	1	12	1	1	0	1	30		
23	Davis, Elisha	g	3-7	3-5	0-0	2	4	6	2	9	3	4	0	1	29		
03	Haines, Sabrina		1-3	0-0	2-2	0	0	0	2	4	0	0	0	1	16		
05	Kanoa, Tia		0-0	0-0	0-0	0	0	0	0	0	0	0	0	0	1		
11	Amukamara, Peace		1-4	0-2	0-0	1	1	2	1	2	1	1	0	0	13		
22	Dornstauder, Quinn		0-4	0-0	1-2	1	5	6	2	1	1	1	2	2	18		
42	Ibis, Kianna		0-0	0-0	0-0	0	0	0	1	0	0	0	0	0	2		
43	Normen, Eliza		0-2	0-0	0-0	1	0	1	0	0	0	0	0	0	9		
	Team					6	3	9							2		
	Totals		17-55	6-15	9-11	20	21	41	16	49	12	14	3	10	200		
	1st - FG %:	6-14	42.9%	2nd: 4-13	30.8%	3rd: 4-13	30.8%	4th: 3-15	20.0%	Game: 17-55	30.9%	Deadball					
	3FG %:	2-5	40.0%	1-5	20.0%	3-4	75.0%	0-1	0.0%	6-15	40.0%	Rebounds					
	FT %:	0-0	0.0%	3-4	75.0%	2-2	100.0%	4-5	80.0%	9-11	81.8%				1		

Officials: Melissa Barlow, Kyle Bacon, Kenneth Nash
 Technical fouls: Stanford-None. Arizona State-None.
 Attendance: 1708

Score by periods	1st	2nd	3rd	4th	Total
Stanford	7	6	9	9	31
Arizona State	14	12	13	10	49

Last FG - STAN 4th-00:56, ASU 4th-02:20.
 Largest lead - STAN None, ASU by 20 3rd-01:56.
 STAN led for 00:00. ASU led for 39:32. Game was tied for 00:28.

Points	In	Off	2nd	Fast	Bench
	Paint	T/O	Chance	Break	
STAN	20	5	9	2	10
ASU	12	12	16	0	7

Score tied - 0 times.
 Lead changed - 0 times.

TV/RADIO ROSTER



#00
ALEX GREEN
G • 5-6 • RS SR
DALLAS, TEXAS
BISHOP LYNCH



#1
LILI THOMPSON
G • 5-7 • JR
MANSFIELD, TEXAS
TIMBERVIEW



#2
SHANNON COFFEE
C • 6-5 • FR
DAYTON, OHIO
CENTERVILLE



#5
KAYLEE JOHNSON
F • 6-3 • SO
CASPER, WYO.
NATRONA COUNTY



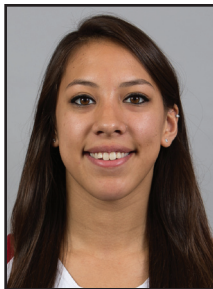
#10
BRIANA ROBERSON
G • 5-7 • JR
FULLERTON, CALIF.
TROY



#11
ALANNA SMITH
F • 6-3 • FR
MELBOURNE, AUSTRALIA
WESLEY COLLEGE



#12
BRITTANY MCPHEE
G • 6-0 • SO
NORMANDY PARK, WASH.
MOUNT RAINIER



#13
MARTA SNIJEZEK
G • 5-8 • FR
MCLEAN, VA.
NATIONAL CATHEDRAL [D.C.]



#22
ALEXA ROMANO
G • 5-10 • FR
ALBUQUERQUE, N.M.
LA CUEVA



#24
ERICA MCCALL
F • 6-3 • JR
BAKERSFIELD, CALIF.
RIDGEVIEW



#25
KIRAN LAKHIAN
G • 6-0 • SR
PLANO, TEXAS
PLANO WEST



#32
KAILEE JOHNSON
F • 6-3 • JR
PORTLAND, ORE.
CENTRAL CATHOLIC



#34
TESS PICKNELL
C • 6-5 • SR
MEDFORD, ORE.
SOUTH MEDFORD



#44
KARLIE SAMUELSON
G • 6-0 • JR
HUNTINGTON BEACH, CALIF.
MATER DEI



TARA VANDERVEER
HEAD COACH
30TH YEAR



AMY TUCKER
ASSOCIATE HEAD COACH
31ST YEAR



KATE PAYE
ASSISTANT COACH
NINTH YEAR



TEMPIE BROWN
ASSISTANT COACH
THIRD YEAR