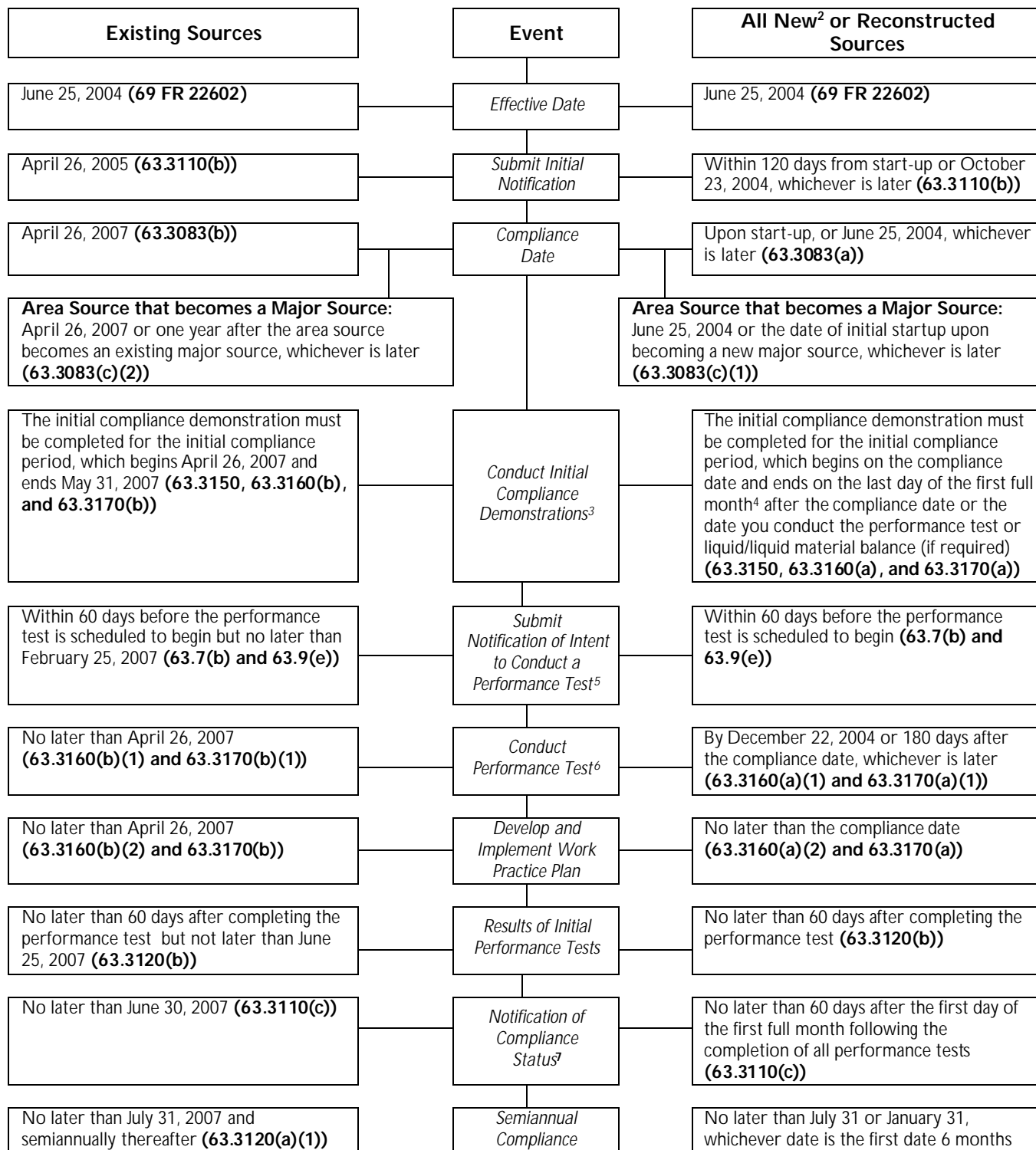


**COMPLIANCE TIMELINE<sup>1</sup>**  
**SURFACE COATING OF AUTOMOBILES AND LIGHT-DUTY TRUCKS**  
**(Final Rule 69 FR 22602)**



**COMPLIANCE TIMELINE<sup>1</sup>**  
**SURFACE COATING OF AUTOMOBILES AND LIGHT-DUTY TRUCKS**  
**(Final Rule 69 FR 22602)**

Existing Sources	Event	All New <sup>2</sup> or Reconstructed Sources
	<i>Reports<sup>8</sup></i>	after the end of the initial compliance period, and semiannually thereafter <b>(63.3120(a)(1))</b>

<sup>1</sup> This timeline does not take into account special situations such as compliance extensions.

<sup>2</sup> New affected source: an affected source that the construction or reconstruction of which is begun after the December 24, 2002 **(63.3082(e))**.

<sup>3</sup> Applies to all compliance requirements.

<sup>4</sup> A month is defined as a calendar month or a pre-specified period of 28 to 35 days to allow for flexibility in recordkeeping when data are based on a business accounting period.

<sup>5</sup> Applies to add-on controls only.

<sup>6</sup> Performance tests must be performed for each capture system and add-on control device, except for solvent recovery systems. For solvent recovery systems, the first material balance must be initiated.

<sup>7</sup> The initial compliance period begins on the compliance date and ends on the last day of the first full month after the compliance date **(63.3150, or 63.3160(a)(3) and (b)(3), or 63.3170(a) and (b))**.

<sup>8</sup> The initial semiannual report must cover the period beginning on the day after the end of the initial compliance period and ends on June 30 or December 31, whichever date is the first date 6 months following the end of the initial compliance period. **(63.3120(a)(1))**