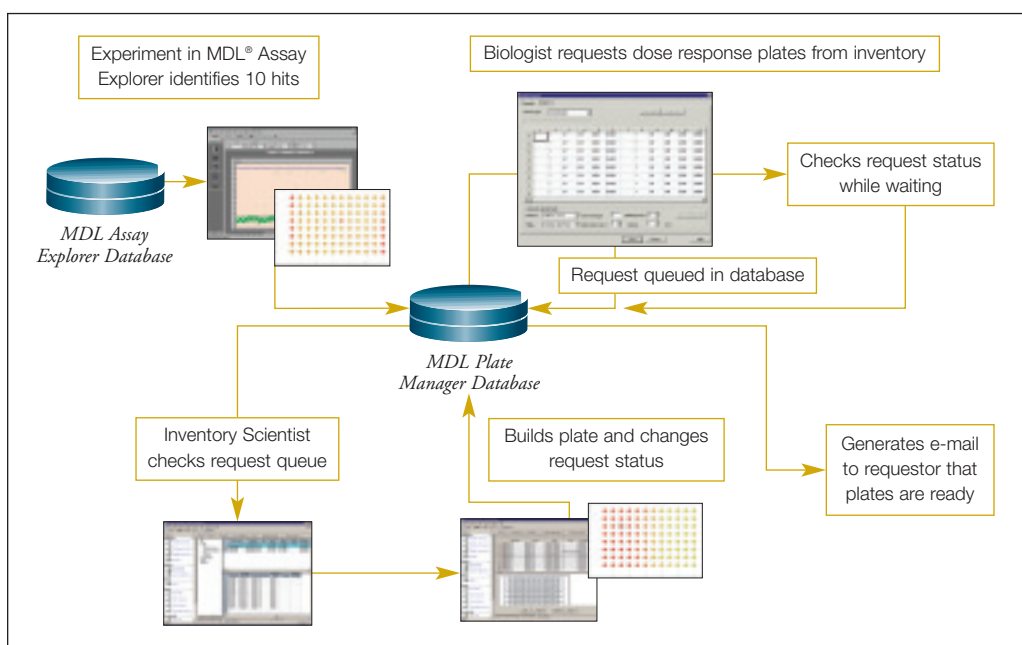


# MDL® Plate Manager

*MDL® Plate Manager is a central repository for plate and sample information that integrates with MDL data management and chemical registration tools. It provides comprehensive sample and container management to accommodate different scientific workflows and the needs of IT managers.*



*MDL Plate Manager streamlines plate management workflow by enabling scientists to build plates, submit requests, check the job queue, make changes, and get notification when plates are ready.*

## Generate leads more efficiently

MDL Plate Manager enables researchers to effectively manage plate and sample information according to specific workflow requirements:

- Create and format plates
- Visualize data
- Request and track jobs
- Reference bar codes
- Integrate with data management and chemical registration tools
- Customize further using the documented API

## Versatile inventory management

- Import plate and sample information from SDfiles or text files
- Export plate build information to robots
- Name samples and plates based on parent names, object properties, or external files (e.g., bar codes)
- Track dry and solubilized samples
- Track freeze/thaw cycles accurately
- Track genealogy from original source to all daughters
- Create and manage location hierarchy



WWW.MDL.COM



Powering  
the Process  
of Invention™

MDL®

### MDL Information Systems, Inc.

14600 Catalina Street  
San Leandro, CA 94577

TEL: (510) 895-1313

FAX: (510) 483-4738

### About MDL and Elsevier

MDL Information Systems, Inc. is a wholly owned subsidiary of Elsevier Inc., and its products and services are part of Elsevier's life sciences portfolio. This portfolio combines extensive MDL informatics, database, workflow, and decision support solutions with 400 Elsevier chemistry and life science journals and related products—accelerating the discovery and development of innovative and successful new drugs by improving the speed and quality of scientists' decision making. For more information, visit [www.mdl.com](http://www.mdl.com).

Elsevier, an operating division of Reed Elsevier Group plc, is a world-leading publisher and provider of scientific, technical, and medical information products and services. Working in partnership with the global science and health communities, Elsevier publishes more than 1,800 journals and 2,200 new books per year, in addition to offering a suite of innovative electronic products, online reference works, and subject-specific portals. For more information, visit [www.elsevier.com](http://www.elsevier.com) and [www.reedelsevier.com](http://www.reedelsevier.com).

MDL Information Systems, Inc.  
an Elsevier company

MDL and Assay Explorer are registered trademarks in the United States, and "Powering the Process of Invention" and Isentris are trademarks of MDL Information Systems, Inc. Other names used herein may be the trademarks or registered trademarks of their respective holders, in the United States and other countries.

© Copyright 2004 MDL Information Systems, Inc.  
All rights reserved.  
PltMgr07-04/1k

MDL Plate Manager allows you to configure and reformat plates and view multiple properties of the samples in the plate layout, then drill down to view structure and batch details.

### Streamlined plate and sample creation

- Create new plates from existing plates or discontinuous samples
- Reformat plates from one layout to another
- Adjust concentrations or create dilution series
- Pool compounds into mixtures by row, column, stack, or orthogonally
- Cherry-pick hits and create requests

### Job request and tracking

- Request plates by querying the database or inserting lists of the samples and plates
- Track request status in real time
- Get notification by e-mail when request is complete

### Powerful data visualization

- Set preferences to display desired units, number format, and relevant details
- View multiple properties of the wells in the plate layout—and color by sample properties
- Organize plate libraries in folders

### Bar code capability

- Reference samples, plates, and locations
- Enter bar codes directly
- Pass bar code name files to label printers

### Share data with the corporate registry

- Store structures directly in Plate Manager using MDL® Direct, or link directly to existing in-house Registration System or MDL® ChemBio AE.
- Handle batches by mapping substance properties

### Customize and extend

Built on MDL® Isentris' three-tier architecture, Plate Manager holds business logic and processing in the middle tier, enabling more efficient integration into specific workflows.

- Integrate with MDL® Assay Explorer
- Access API to customize and integrate lab automation and third-party software
- Customize terminology through dictionaries
- Set custom properties as inheritable, importable, viewable, etc.

### Reduce excess inventory and ensure high quality samples

By serving as the central sample repository, MDL Plate Manager reduces duplicate plates, eliminates expired samples, and speeds the path to discovery by minimizing the cycle time for plate fulfillment.

**For more information about MDL Plate Manager, please contact an Elsevier Account Manager or visit [www.mdl.com](http://www.mdl.com).**

WWW.MDL.COM



Powering  
the Process  
of Invention™

MDL®

#### MDL Information Systems, Inc.

14600 Catalina Street  
San Leandro, CA 94577  
TEL: (510) 895-1313  
FAX: (510) 483-4738

#### About MDL and Elsevier

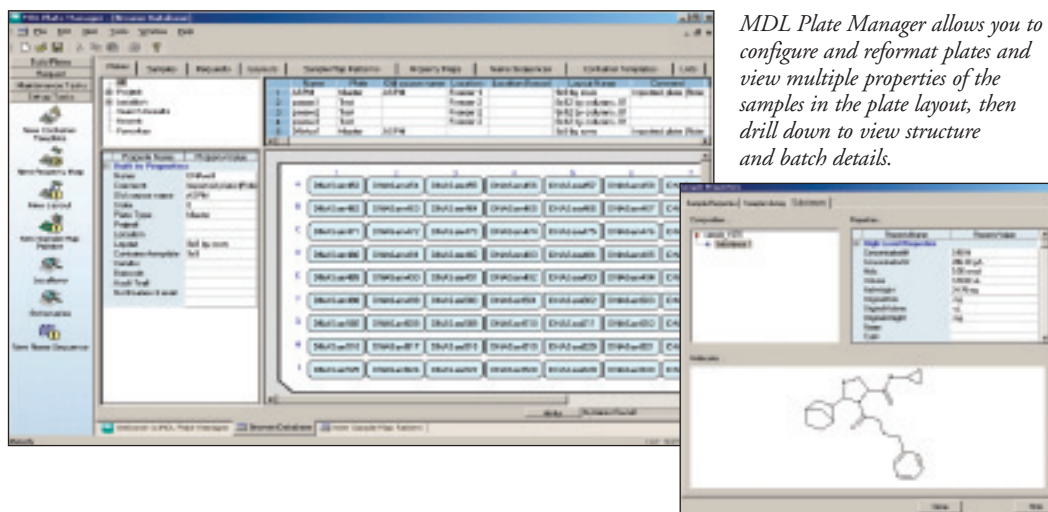
MDL Information Systems, Inc. is a wholly owned subsidiary of Elsevier Inc., and its products and services are part of Elsevier's life sciences portfolio. This portfolio combines extensive MDL informatics, database, workflow, and decision support solutions with 400 Elsevier chemistry and life science journals and related products—accelerating the discovery and development of innovative and successful new drugs by improving the speed and quality of scientists' decision making. For more information, visit [www.mdl.com](http://www.mdl.com).

Elsevier, an operating division of Reed Elsevier Group plc, is a world-leading publisher and provider of scientific, technical, and medical information products and services. Working in partnership with the global science and health communities, Elsevier publishes more than 1,800 journals and 2,200 new books per year, in addition to offering a suite of innovative electronic products, online reference works, and subject-specific portals. For more information, visit [www.elsevier.com](http://www.elsevier.com) and [www.reedelsevier.com](http://www.reedelsevier.com).

MDL Information Systems, Inc.  
an Elsevier company

*MDL and Assay Explorer are registered trademarks in the United States, and "Powering the Process of Invention" and Isentris are trademarks of MDL Information Systems, Inc. Other names used herein may be the trademarks or registered trademarks of their respective holders, in the United States and other countries.*

© Copyright 2004 MDL Information Systems, Inc.  
All rights reserved.  
PltMgr/07-04/1k



*MDL Plate Manager allows you to configure and reformat plates and view multiple properties of the samples in the plate layout, then drill down to view structure and batch details.*

#### Streamlined plate and sample creation

- Create new plates from existing plates or discontinuous samples
- Reformat plates from one layout to another
- Adjust concentrations or create dilution series
- Pool compounds into mixtures by row, column, stack, or orthogonally
- Cherry-pick hits and create requests

#### Job request and tracking

- Request plates by querying the database or inserting lists of the samples and plates
- Track request status in real time
- Get notification by e-mail when request is complete

#### Powerful data visualization

- Set preferences to display desired units, number format, and relevant details
- View multiple properties of the wells in the plate layout—and color by sample properties
- Organize plate libraries in folders

#### Bar code capability

- Reference samples, plates, and locations
- Enter bar codes directly
- Pass bar code name files to label printers

#### Share data with the corporate registry

- Store structures directly in Plate Manager using MDL® Direct, or link directly to existing in-house Registration System or MDL® ChemBio AE.
- Handle batches by mapping substance properties

#### Customize and extend

Built on MDL® Isentris' three-tier architecture, Plate Manager holds business logic and processing in the middle tier, enabling more efficient integration into specific workflows.

- Integrate with MDL® Assay Explorer
- Access API to customize and integrate lab automation and third-party software
- Customize terminology through dictionaries
- Set custom properties as inheritable, importable, viewable, etc.

#### Reduce excess inventory and ensure high quality samples

By serving as the central sample repository, MDL Plate Manager reduces duplicate plates, eliminates expired samples, and speeds the path to discovery by minimizing the cycle time for plate fulfillment.

**For more information about MDL Plate Manager, please contact an Elsevier Account Manager or visit [www.mdl.com](http://www.mdl.com).**