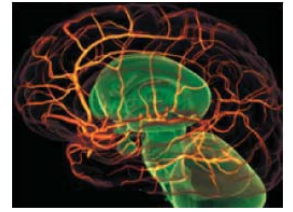


Stanford University School of Medicine

Neuroscience Forum



Date of Event: June 6, 2014 (7am – 2pm)

Participants: Neurology, Neurosurgery, Psychiatry, Basic Neurosciences, Medical Students, Residents & Fellows

Location: Li Ka Shing Center for Learning and Knowledge, Berg Hall, 2nd Floor

Breakfast Reception (7:00am)

Opening Remarks & Welcome of Honored Guests (7:30am)

Speakers (7:45am – 9:45am)

Omar Choudhri

National trends for the utilization of cerebral angiography in patients with unruptured aneurysms: 1999-2009

Afaaf Shakir

Quantitative Diffusion Weighted MRI Correlates with Outcome in Traumatic Brain Injury

Yohannes W. Woldeamanuel

The Place of Corticosteroids in Migraine Attack Management: Systematic Review and Critical Appraisal

Nicholas Bott

Young at Processing Speed: Evidence from Inflammatory, Cardiovascular, and Neuroanatomical Factors in “Super-agers”

Cristen E. Olds

Functional near-infrared spectroscopy of the auditory cortex: predicting speech perception outcomes in adult cochlear implant users

Allyson Alexander

Pediatric Glioblastoma: A Retrospective Review of 41 cases

Dora Hermes

Stimulus dependence of gamma oscillations in human visual cortex

Rita Ghatak

Dementia Support Program for Patients & Families in a Tertiary Hospital Setting: Description and Survey

Coffee Break (9:15am – 9:30am)

Speakers (9:30am – 10:50am)

Achal Achrol

Computational magnetic resonance voxel cluster analysis reveals clinically relevant anatomic subtypes of human glioblastoma

Vivianne Tawfik

Delta Opioid Receptors Presynaptically Regulate Cutaneous Mechanosensory Neuron Input of the Spinal Cord Dorsal Horn

“(cont.)”

Abdulrazag Ajlan

Redefining Radiological Classification for meningiomas of the Tuberculum and Diaphragma Sellae

Anna-Clare Milazzo

Functional Network Correlates of Executive Dysfunction in Traumatic Brain Injury

Terry Burns

Transcriptional Signature of Irradiated Microglia—Implications for Cognition and Tumor Migration

Sukru Burc Eryilmaz

Brain-like associative learning using a nanoscale non-volatile synaptic device array

Derek Su

Diagnostic Yield of an Extended Ambulatory Cardiac Rhythm Monitor in Patients with TIA or Stroke

Break (10:50am – 11:00am)

Speakers (11:00am – 12:15pm)

Keynote Speaker/Honored Guest

Michael F. Clarke, M.D.

(11:00am – 11:45am)

Karel H. and Avicé N. Beekhuis Professor in Cancer Biology Associate Director, Stanford Institute for Stem Cell & Regenerative Medicine

Kai Joshua Miller

Ventral temporal cortex is a locus of visual object perception

Ka Yam Chak

TGFβ-SMAD-mediated microRNA biogenesis in epilepsy

Michelle Cheng

Optogenetic Neuronal Stimulation Promotes Functional Recovery After Stroke

Luncheon Reception (12:15pm – 1:00pm)

Poster Presentations (1:00pm-2:00pm)

A Special Thanks to: Gary K. Steinberg, M.D., Ph.D

