

DuPont - Belle Plant

Belle, West Virginia



The Road to Reuse...

The DuPont Belle Plant is located in Belle, West Virginia, approximately 8 miles east of Charleston, along the Kanawha River. The 723-acre site manufactured various specialty and agricultural chemical products since 1926. Surrounding land use includes industrial, commercial, and residential uses. Based on sampling that identified organic compounds in portions of the property, DuPont began evaluating remedial technologies to clean up the known area of impacted soil and groundwater.

DuPont continues to monitor areas of concern and work with the U.S. Environmental Protection Agency (EPA) to ensure protection of human health and the environment

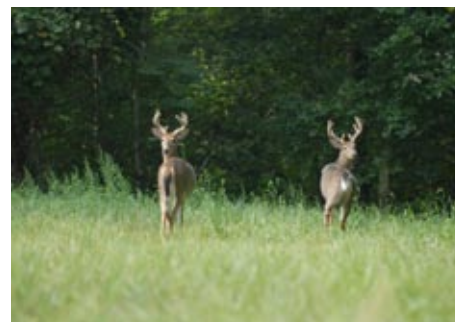


Approximate total acres and current use

Approximate Acres in Reuse:
490

Current Use: Wildlife habitat, manufacturing

associated with activities at the plant. While site monitoring and cleanup are ongoing, the facility includes seven primary operating divisions over a 105-acre manufacturing area. In 2007, DuPont employed approximately 400 people at the Belle site. The site includes an additional 618 acres of mountain property. Of this additional property, 490 acres were set aside for reuse as a Wildlife Habitat Area in August 1992. The DuPont Belle Plant wildlife team manages the undeveloped property. This program has been company certified for many years and has worked with the community to promote habitat in this area. These habitat enhancements include: planting trees and cool season grasses to provide food resources



and cover for wildlife, constructing nesting structures for birds and mammals, developing three ponds, and establishing and maintaining a wildflower plot.

In January 2008, construction began for a new \$100 million manufacturing plant on a disused portion of the Belle site by Kureha Corporation. The site will be used to build a plant for the production and sale of the high performance polymer, polyglycolic acid (PGA) and is expected to start operations in 2010.



www.epa.gov/reg3wcmd/correctiveaction.htm

For More Information

EPA Region 3 Contact: William Geiger,
(215) 814-3413, geiger.william@epa.gov