

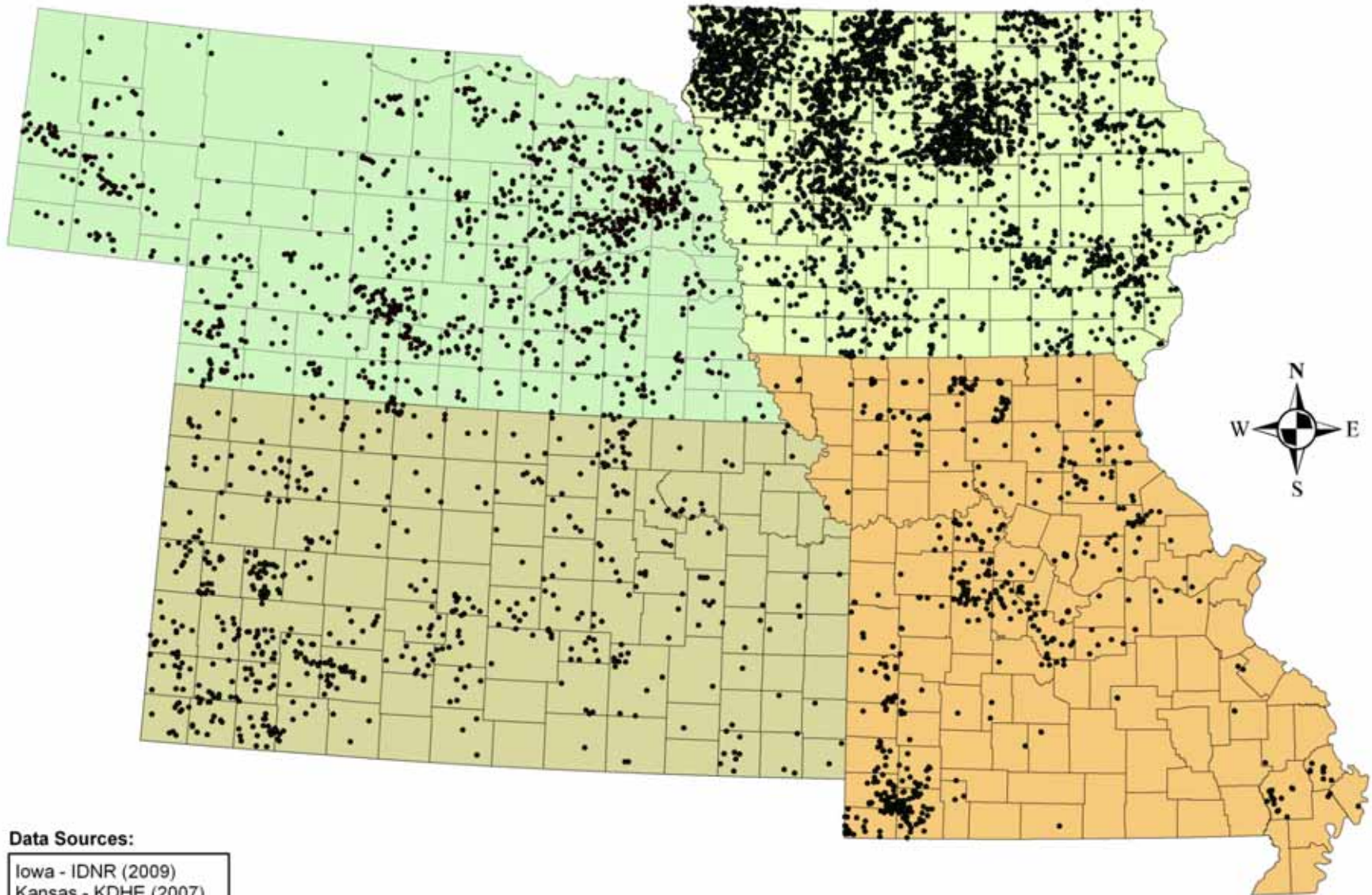
# EPA Region 7 AFO/CAFO Inspection Program



Presented by:

Stephen Pollard  
AFO/CAFO Enforcement Coordinator  
EPA Region 7

# Region 7 CAFO Distribution

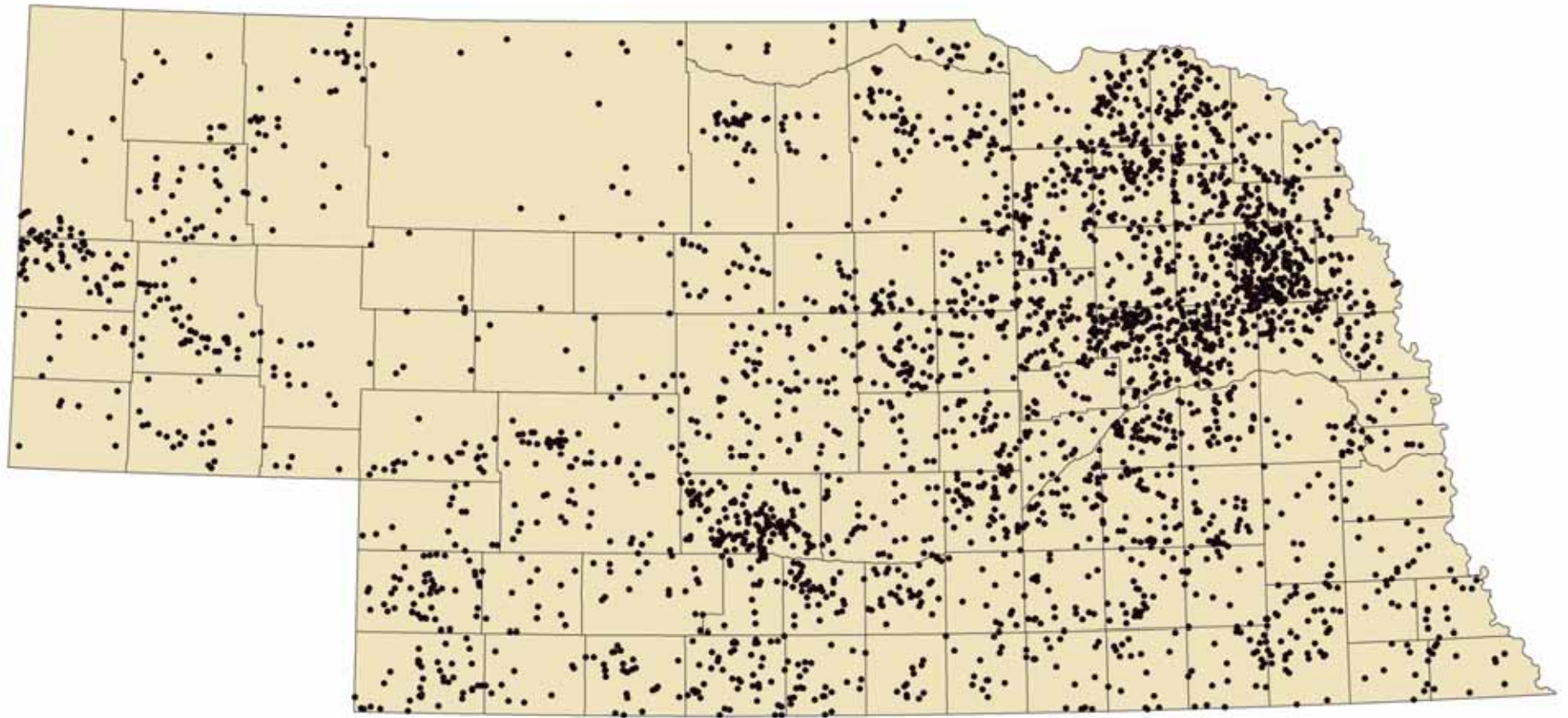


## Data Sources:

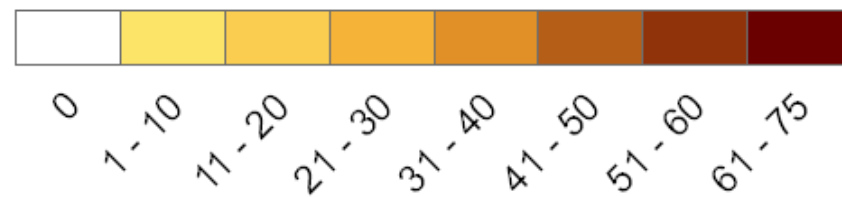
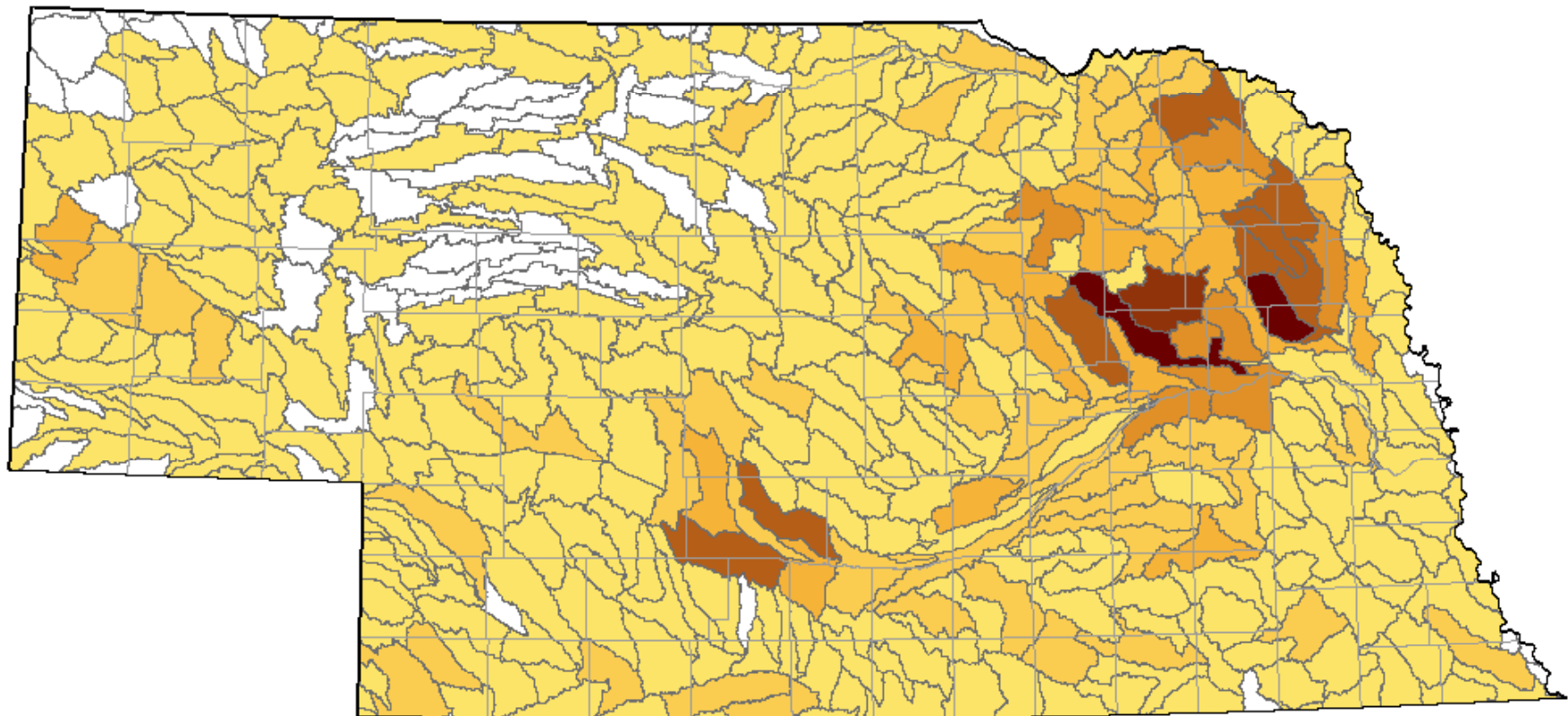
Iowa - IDNR (2009)  
Kansas - KDHE (2007)  
Missouri - MDNR (2008)  
Nebraska - NDEQ (2010)

0 25 50 100 150 200 Miles

# Large & Medium Sized AFOs in Nebraska



# Large & Medium Sized AFO Densities by HUC 10

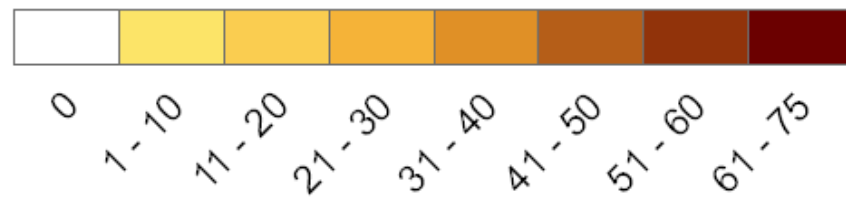
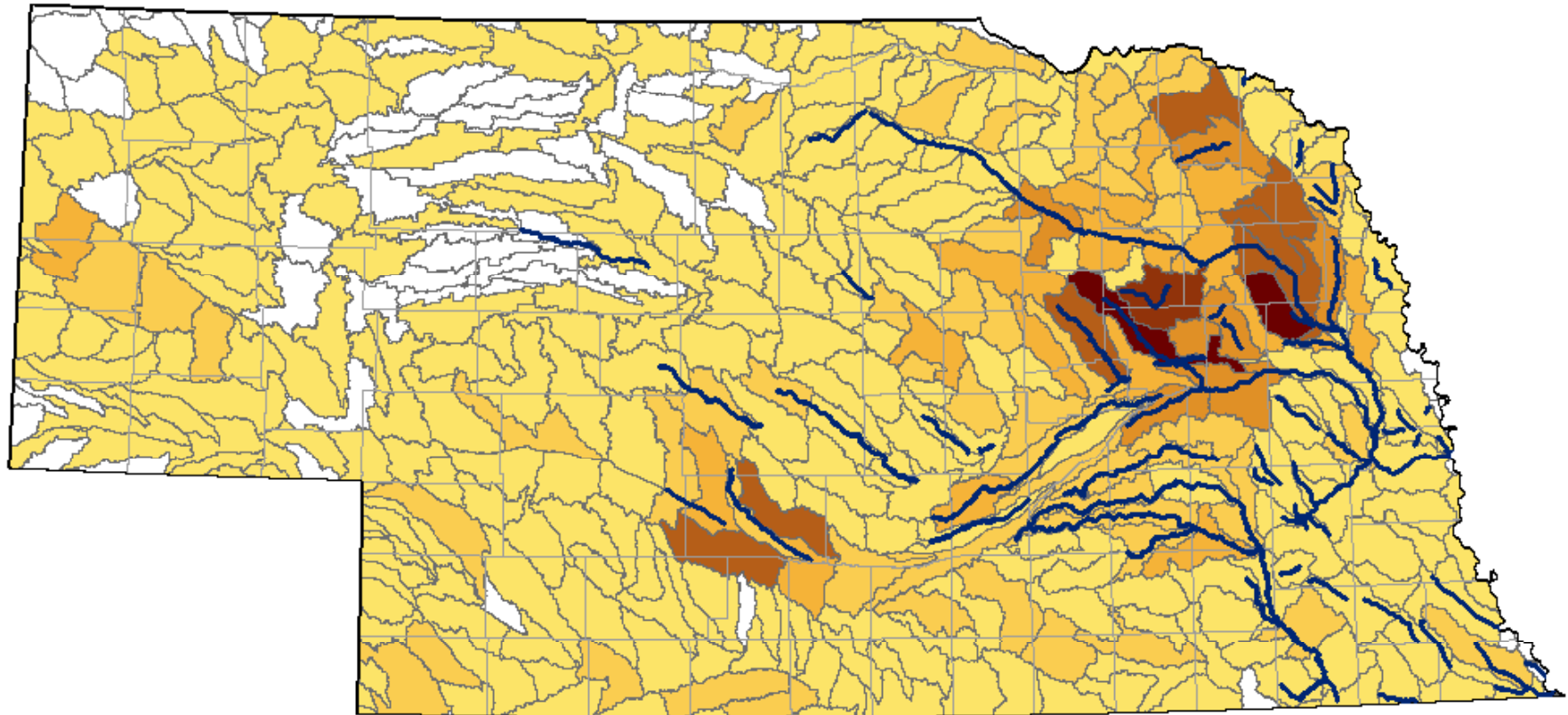


Data Sources:

AFOs - NDEQ Data (2011)

Watershed Boundaries - USGS

# Large & Medium Sized AFO Densities by HUC 10 with Impaired Waterways



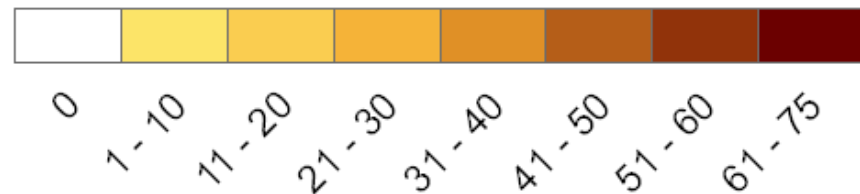
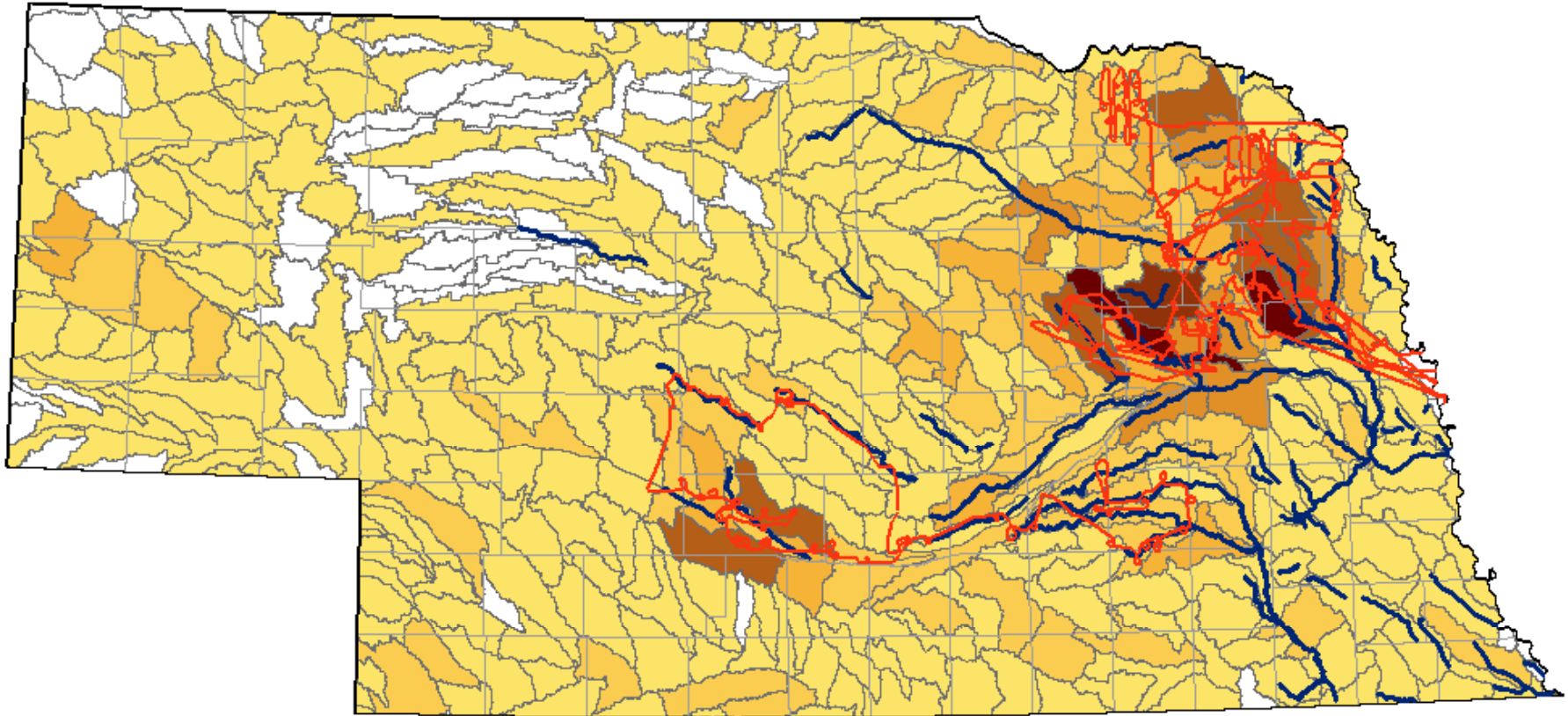
Data Sources:

AFOs - NDEQ Data (2011)

Watershed Boundaries - USGS

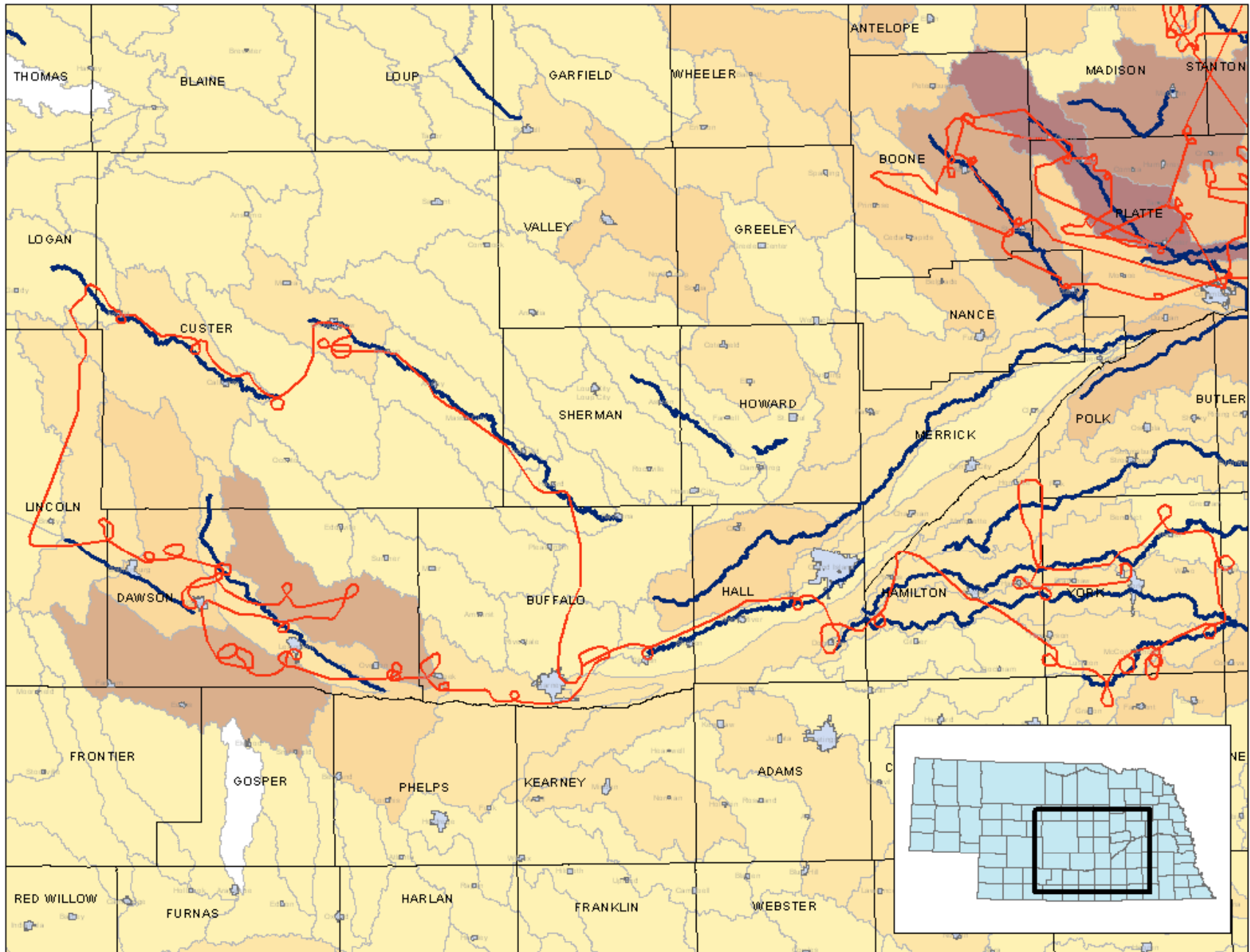
Impaired Waters - NDEQ's Surface Water Quality Integrated Report (2010)

# EPA Region 7 Flight Paths



Data Sources:

- AFOs - NDEQ Data (2011)
- Watershed Boundaries - USGS
- Impaired Waters - NDEQ's Surface Water Quality Integrated Report (2010)
- Flight Paths - EPA Region 7 (2012)





Cessna 172



Nikon D5000 w/ GPS



Secondary Containment

















04.29.2010 10:43



06.24.2010 13:18







03.10.2011 11:37



Medium CAFOs

# Medium CAFO Definition

An AFO is defined as a Medium CAFO if:

(i) The type and number of animals that it stables or confines falls within any of the following ranges:

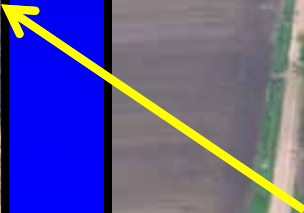
Species	
Beef	300 – 999
Dairy	200 – 699
Swine > 55 lbs	750 – 2,499
Swine < 55 lbs	3,000 – 9,999
Layer/Broiler– Wet	9,000 – 29,999
Layer Dry	25,000 – 81,999
Chicken – Dry	37,500 – 124,999
Turkey	16,500 – 54,999
Sheep/Lambs	3,000 – 9,999
Horses	150 – 499

**AND**

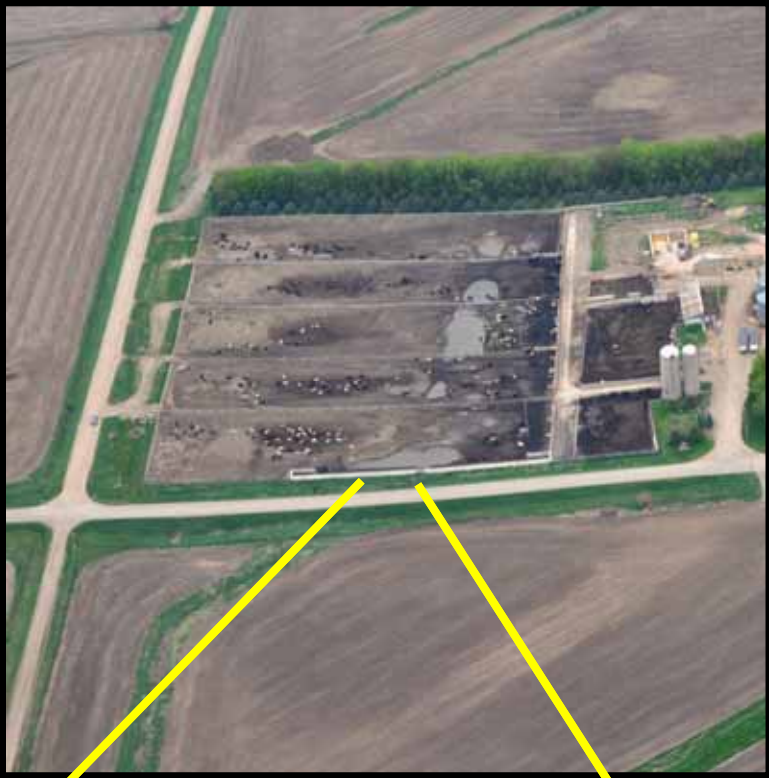
(ii) Either one of the following conditions are met:

- (A) Pollutants are discharged into waters of the United States through a man-made ditch, flushing system, or other similar man-made device; or
- (B) Pollutants are discharged directly into waters of the United States which originate outside of and pass over, across, or through the facility or otherwise come into direct contact with the animals confined in the operation.

Road Ditches



Road  
Ditches





Road Ditch



Drainage Ditch



# Drainage Tiles



# Drainage Tiles



# Options for Producers

Facilities have four options to comply:

- Remove the man-made conveyance;
- Stop the discharge;
- Obtain an NPDES permit as a Medium CAFO and install appropriate controls; **or**
- Increase size and obtain NPDES permit as a large CAFO and install appropriate controls.

# Winter Feeding Areas

## Factors to consider with winter feeding areas

- **Does it meet the definition of an AFO or is it an extension of an existing AFO .**
- **“No Vegetation” criteria needs to be evaluated when animals are confined, not during the normal growing season.**
- **Location, Location, Location**





# Manure/Litter Stockpiles



# Factors to consider with Stockpiles

- **Stockpiles are considered part of the production area.**
- **Stockpiles associated with Large CAFOs are not allowed to discharge unless its is pursuant to a NPDES permit.**
- **Location, Location, Location**



09.12.2011 18:26



# Other Areas of Concern

- Sludge Accumulation
- NMPs

# Questions/Comments