

# GOOD POWERPOINT PRESENTATIONS FOR CLASSROOM & STREAMING VIDEO



IRT EdTech Team



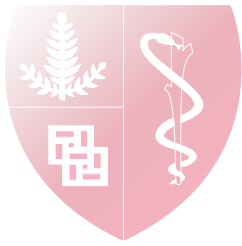
STANFORD  
UNIVERSITY

---



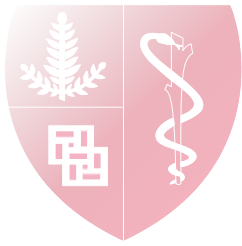
# Clear PowerPoint Slides

- Title slide has title, name, date
- List learning objectives and keywords on your second slide
- 5 or 6 lines of text maximum
- White background
- Dark text (black or blue)
- Use a 16:9 format for your presentation (13.33"x7.5")
  - Recommended: School of Medicine PPTX template from:  
<http://med.stanford.edu/irt/teaching/gohd>

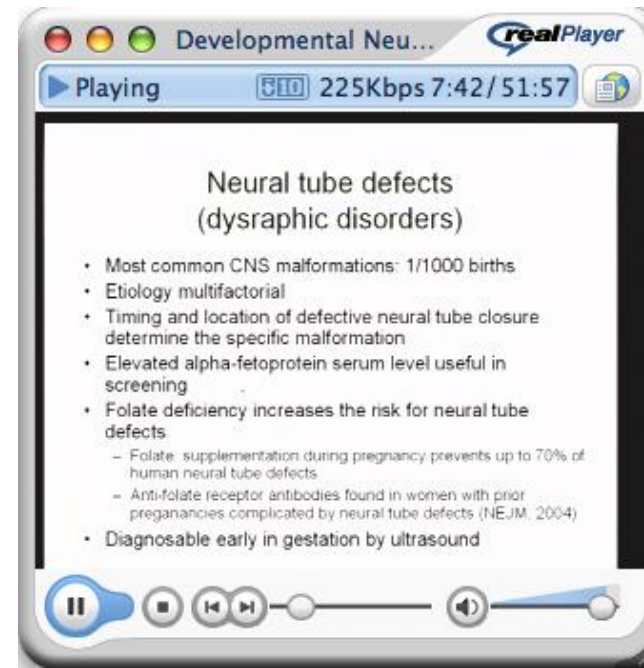
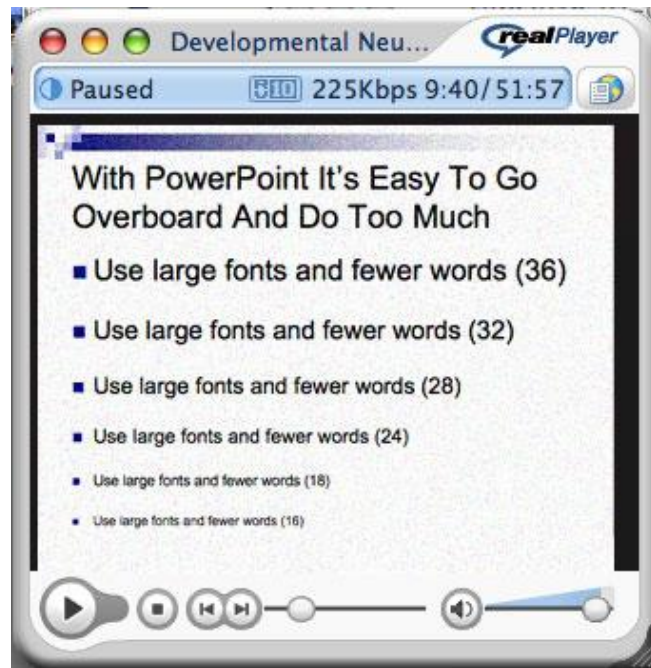


# With PowerPoint It's Easy To Go Overboard And Do Too Much

- Use large fonts and fewer words (36)
- Use large fonts and fewer words (32)
- Use large fonts and fewer words (28)
- Use large fonts and fewer words (24) – this is the recommended minimum size
- Use large fonts and fewer words (18)
- Use large fonts and fewer words (16)



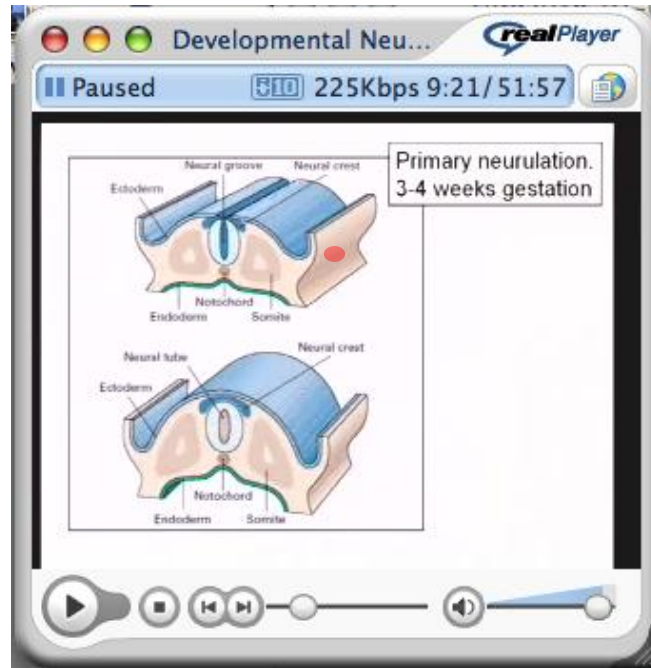
# With PowerPoint It's Easy to Go Overboard (cont.)



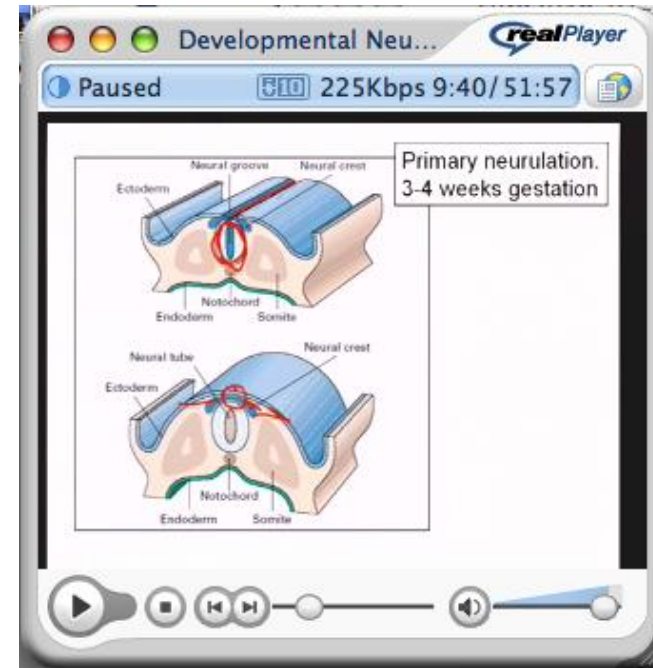
- This is what fonts look like when viewed in a video
- Try to use 32 pt font for legibility



# Laser Pointer vs Digital Ink



- Laser pointer is dim and disappears



- Digital ink stays on the screen and is more vivid



Use large, high resolution images

**Arteries to the**

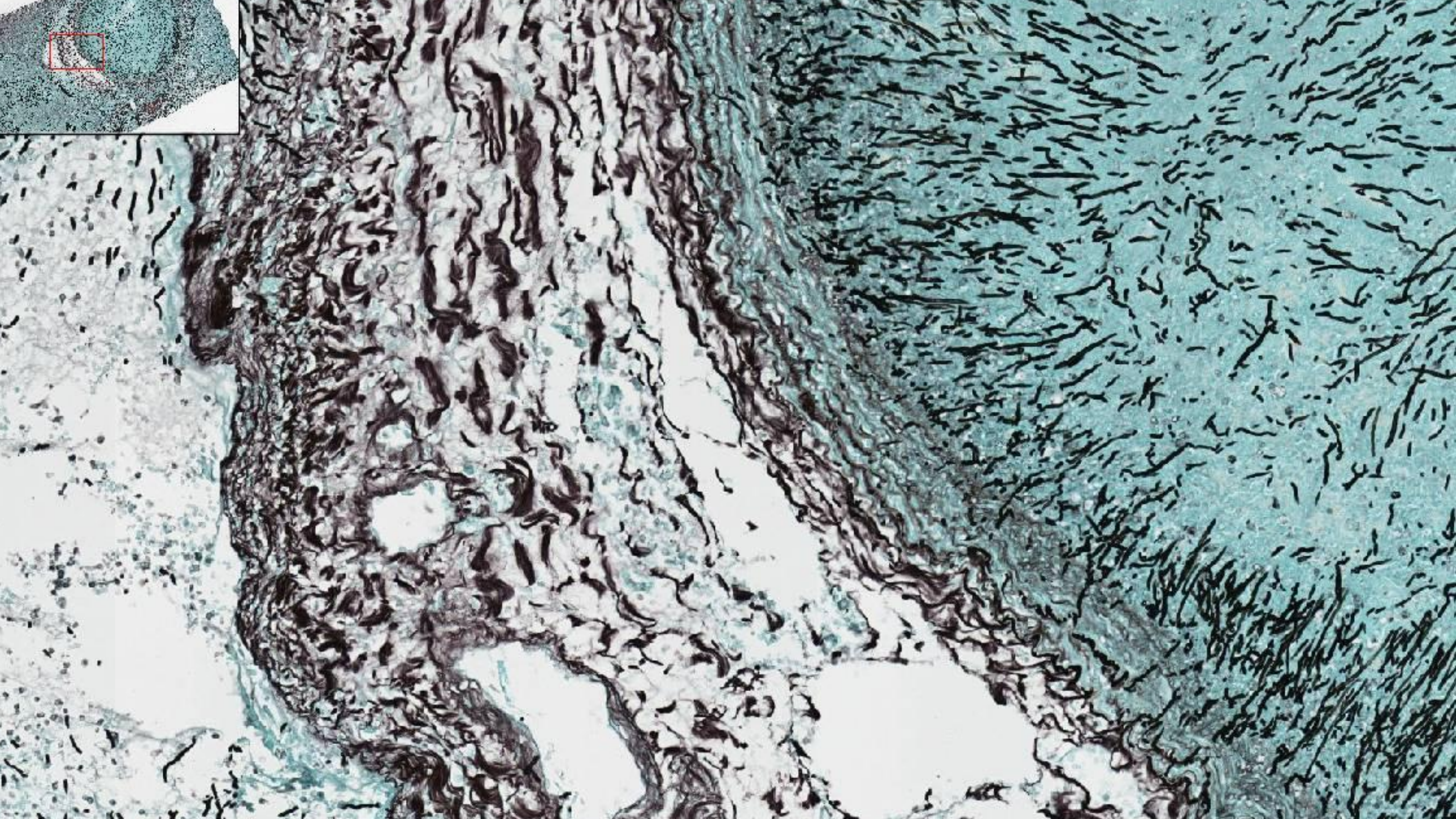
Two major pairs of arteries supply the brain—the Internal Carotid and the Vertebral. They have only moderately good collateral sources of blood. The Circle of Willis is the most important anastomotic structure.

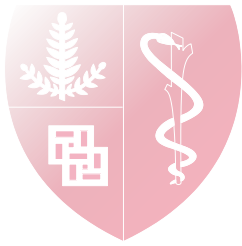
The Middle Cerebral Artery supplies much of the lateral surface of the brain. The Anterior Cerebral artery supplies much of the medial surface. The Posterior Cerebral supplies much of the under-surface of the brain.

ANT  
LAT  
MCA  
MED

- ANTERIOR CEREBRAL ARTERY
- MIDDLE CEREBRAL ARTERY
- POSTERIOR CEREBRAL ARTERY

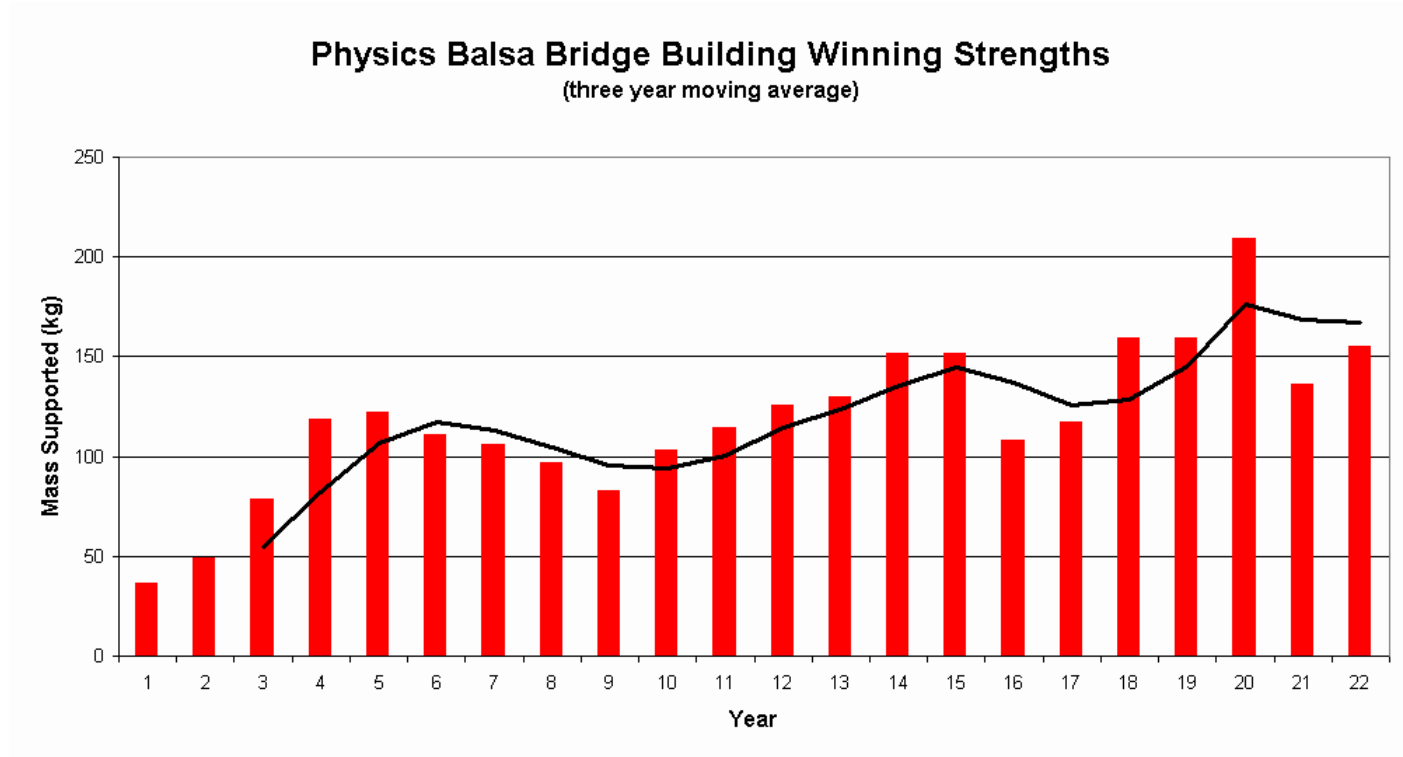
19





# Many graphs are very hard to read

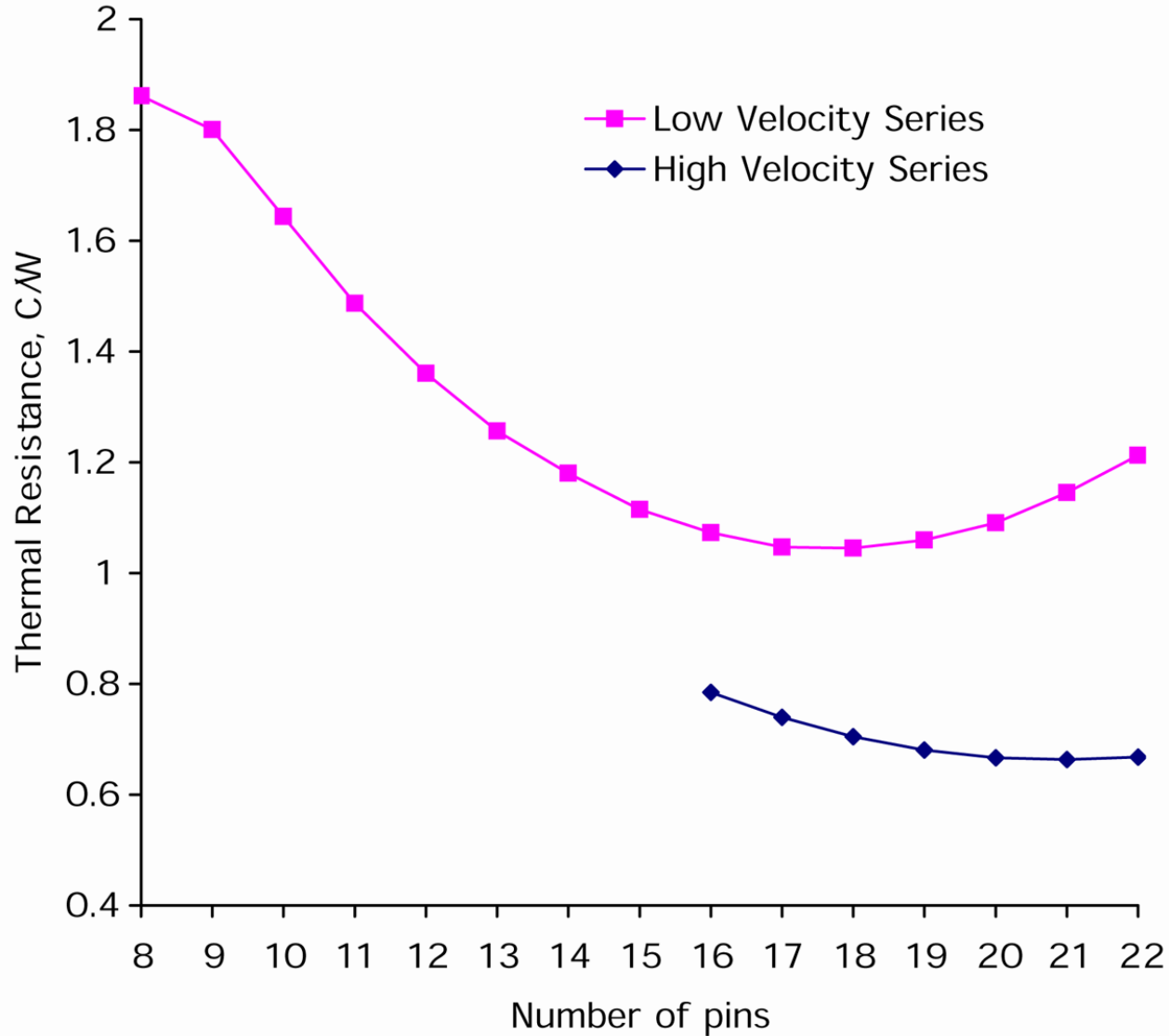
- Thin lines
- Small legends
- Small axis labels
- Tiny unit labels







# This graph is easy to read





# BEEF DEMAND INDEX

## Up more than 20% since 1998!

80 On the heels of last year's 8% growth, consumer demand for beef dipped slightly in 2005, but the trend in beef demand remains on an upward slope.

70

60

50

40

1998

1999

2000

2001

2002

2003

2004

2005

Demand is a measurement of per capita consumption and spending.  
Data provided by the beef demand index.

Brought to you by the Beef Checkoff program.



# Poor Color Choice

- This is hard to read
- This hard too
- This is Impossible
- Light color against dark backgrounds are very hard on the eyes