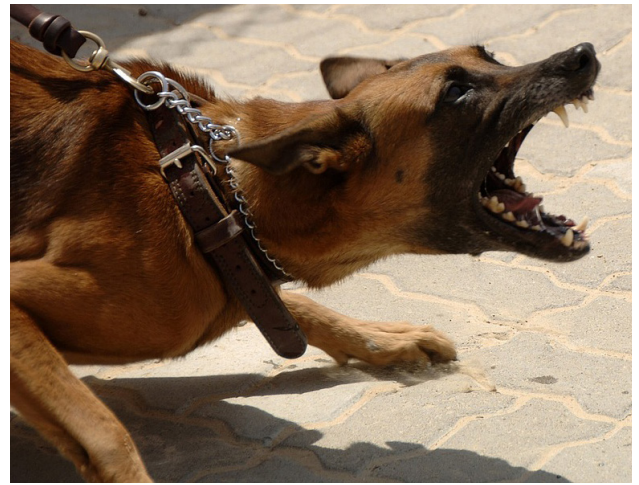


**Avoid wild and unfamiliar animals, and keep pets and children away. If you are bitten or scratched by an animal that may be carrying rabies, seek medical attention immediately. Do NOT wait for symptoms to begin.**



**Avoid wild and unfamiliar animals, and keep pets and children away. Watch for unusual behavior or illness.**

**If you have any contact with a bat, or wake up in a room with a bat, seek medical attention.**

**You may not always realize that you have been bitten by a bat until it is too late.**



**San Mateo County Mosquito and Vector Control District**

**[www.smcmvcd.org](http://www.smcmvcd.org)  
(650) 344-8592**

**Protecting public health since 1916**