



# Local Policy Maker Group (LPMG) Role / Structure

LPMG  
January 30, 2014

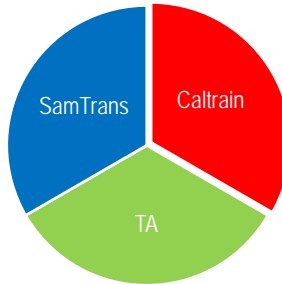


# Context



## San Mateo County Transit District

- SamTrans
- San Mateo County Transportation Authority (TA)
- Caltrain

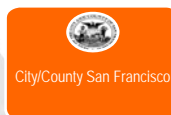


3



## Caltrain

- Peninsula Corridor Joint Powers Board (JPB)
  - Three counties represented
  - 9 board members (3 from each county)
- Citizens Advisory Committee (JPB CAC)
  - Selected by the JPB (3 from each county)
  - Informs JPB directly
- Bicycle Advisory Committee (JPB BAC)
  - Selected by the Staff Coordinating Council (3 from each county)
  - Informs JPB and CAC through staff



4

## JPB Considerations

- Policies
- Planning (Short- and Long-Term)
- Budgets / Financial Plans
- Capital Projects
- Operations and Maintenance

5

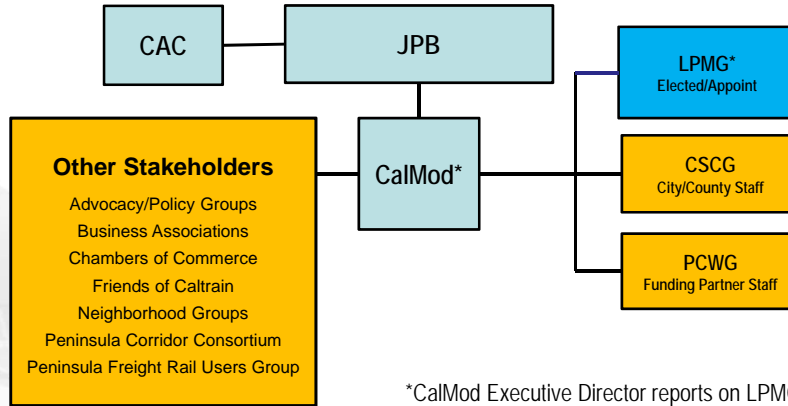
## Caltrain Modernization Program (CalMod)

- ~\$1.5 Billion Early Investment Program
  - Advanced Signal System (2015)
  - Corridor Electrification and EMUs (2019)
- HSR/Caltrain Blended System Planning



6

## Local Agency Input



\*CalMod Executive Director reports on LPMG discussions to JPB bi-monthly

## LPMG: 20 Members + Chair

Cities	Representative	Alternate
Atherton	Councilmember Cary Wiest	Councilmember Elizabeth Lewis
Belmont	Councilmember Charles Stone	Councilmember Eric Reed
Brisbane	Councilmember Clifford Lentz	
Burlingame	Councilmember Michael Brownrigg	Councilmember Ricardo Ortiz
Menlo Park	Councilmember Rich Cline	Councilmember Kirsten Keith
Millbrae	Councilmember Wayne Lee	
Mountain View	Councilmember R. Michael Kasperzak	Councilmember Ronit Bryant
Palo Alto	Councilmember Liz Kniss	Councilmember Greg Scharff
Redwood City	Councilmember Barbara Pierce	Councilmember Jeff Gee
San Bruno	Councilmember Ken Ibarra	
San Carlos	Councilmember Ron Collins	Councilmember Mark Olbert
San Francisco BOS	Supervisor Scott Wiener	
San Francisco	Gillian Gillett	Susan Gygi
San Jose	Councilmember Ash Kalra	
San Mateo Co. BOS	TBD	
San Mateo	Councilmember Jack Matthews	Councilmember Joe Goethals
Santa Clara Co.BOS	TBD	
Santa Clara	Councilmember Jamie Matthews	Councilmember Lisa Gillmor
South San Francisco	Councilmember Karyl Matsumoto	Councilmember Rich Garbarino
Sunnyvale	Councilmember Jim Davis	

## LPMG Context

- San Mateo County Corridor Rail Working Group request
- Create regular venue for city dialogue and participation
- LPMG formed in late 2012 (CSCG support)
- Provide local perspective and input to CalMod Program

## LPMG Meetings

- Public bi-monthly meeting
  - Follow Brown Act
  - Chair: JPB Member
  - Staff: CalMod Team
- E-updates on non-meeting months
- Agenda
  - Driven by CalMod milestones
  - Items requested by members

## CSCG Discussion

- LPMG report at JPB?
  - Annual / Bi-annual / Quarterly
  - By LPMG Chair
- VTA Practice
  - Standing agendized committee update at each board meeting
  - By Committee Chair or written report
- SFCTA Practice
  - Committee update provided by staff to board
  - Committee discussions incorporated in staff memos

## Discussion