



San Francisco Roadway Bridges Project

Dogpatch Neighborhood Association
Tuesday, May 13, 2014

Overview

- Scope & Need
- Construction Timeline & Sequence
- Construction Impacts
- Project Elements
- Next Steps



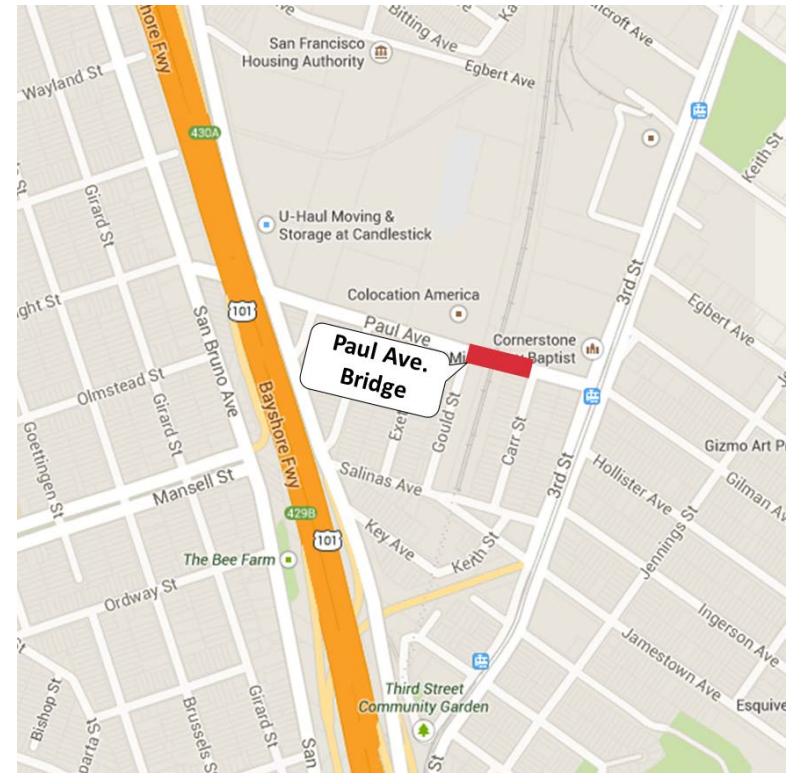
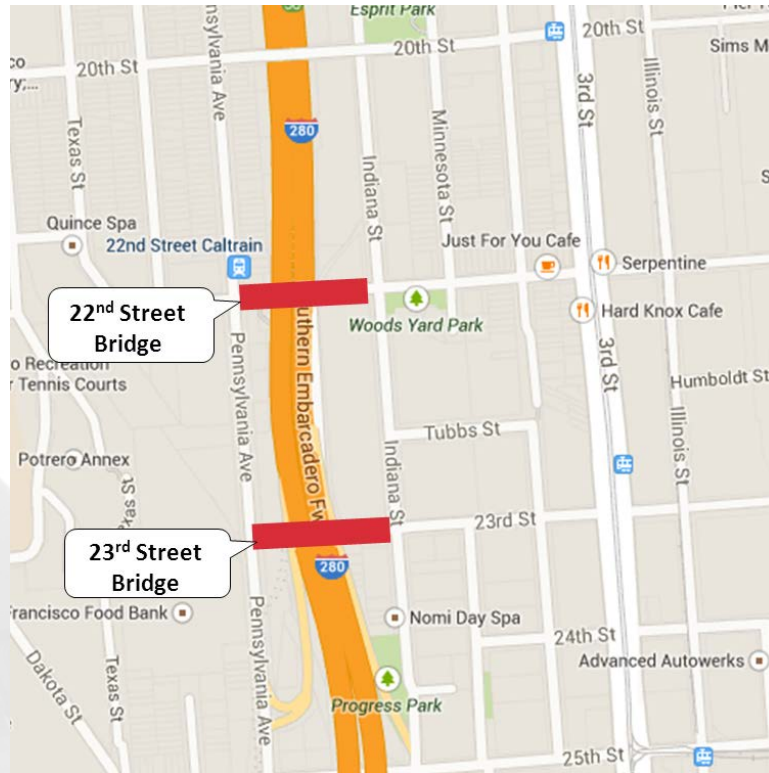
Scope & Need



Project Scope

- Remove and replace three existing vehicular/pedestrian bridges over the Caltrain tracks at the following locations:
 - 22nd Street
 - 23rd Street
 - Paul Avenue

Project Area



Replace Three Vehicular/Pedestrian Bridges

Background

Why do these bridges need to be replaced?

- Rapidly aging vehicular/pedestrian bridges
- Bridges deemed structurally deficient; do not meet existing seismic safety standards
- Must be replaced for the safety of community members and Caltrain customers

The E's of Rail Safety

- EDUCATION
- ENGINEERING



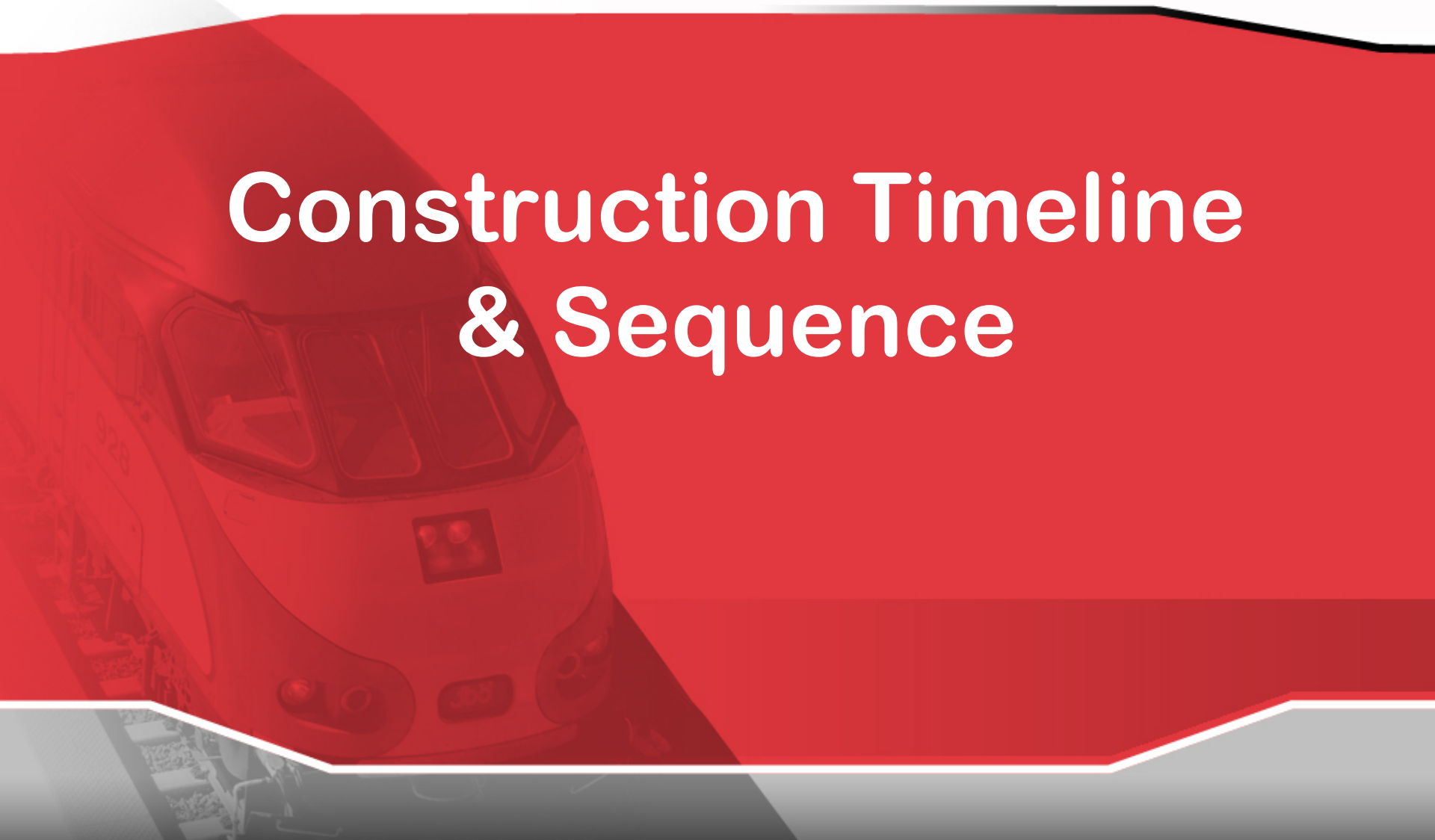
**Jerrold Street Bridge -
2011**

Background

- Project cost: \$20 million
- Paid for by Federal Highway Administration and local funding
- Owned by the City of San Francisco
- Maintained by Caltrain



Construction Timeline & Sequence



Construction Timeline

- **Schedule**
 - Construction set to begin in Fall 2014 and last until Fall 2016
 - Work is expected to last 9 to 12 months per bridge
 - Work not concurrent

Construction Sequence

23rd Street



Fall 2014-15

22nd Street



Fall 2015-16

Construction Sequence



Paul Avenue

Fall 2014-15



Construction Impacts



Construction Impacts

- Majority of work done during day
- Some night and weekend work required during certain construction activities
- Localized noise impacts
- Notification process
 - Mailers sent 14 days before starting construction, loud operations and/or night work
 - Notices are mailed to residents and businesses located up to a ½ mile from the project site

Construction Impacts

- Vehicular and pedestrian restrictions will be required and posted at each bridge
- During closures at 22nd and 23rd streets, detours and shuttle in place during peak AM/PM hours
- During closure on Paul Avenue, detours
- MUNI coordination



Project Elements

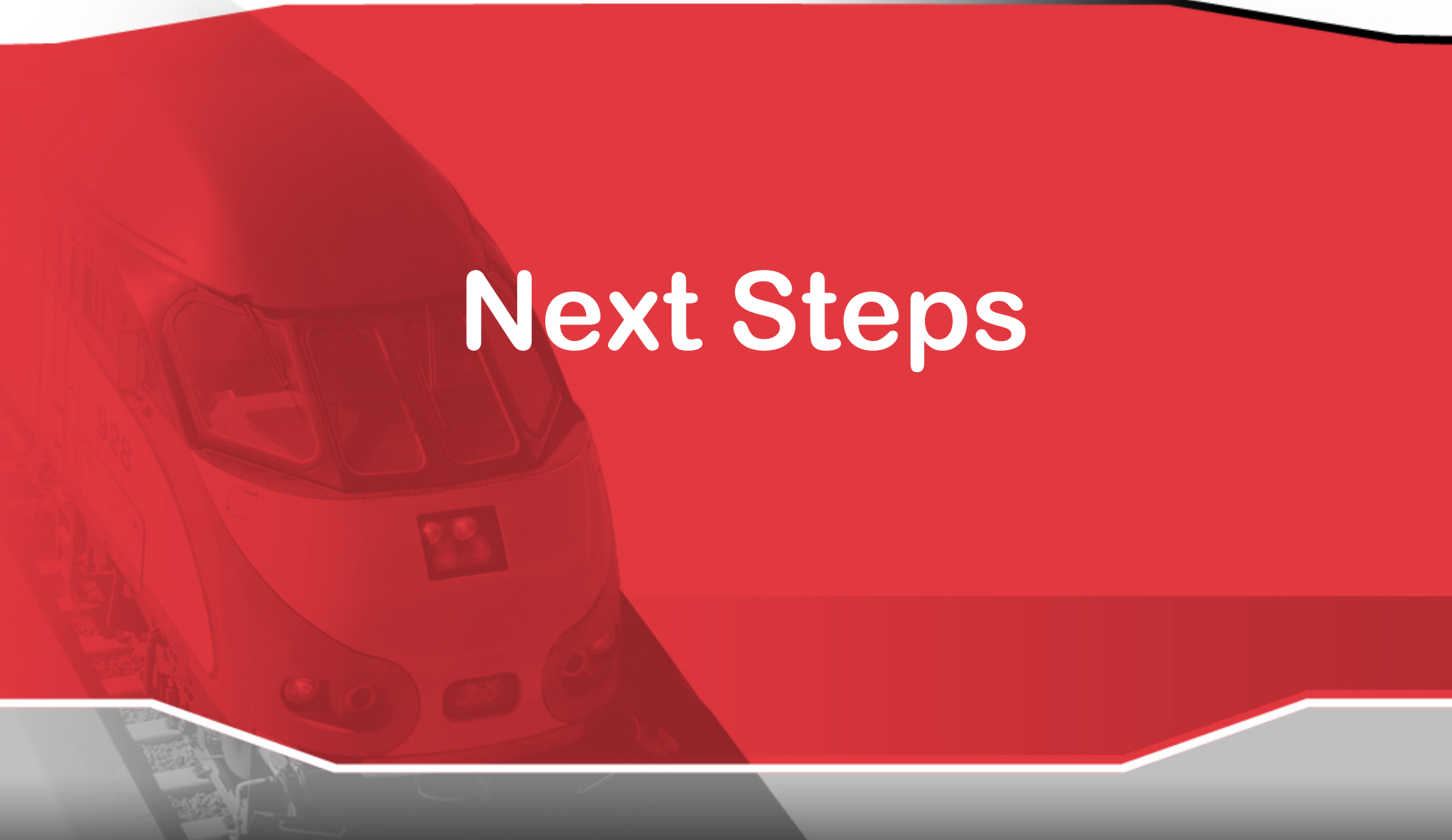


Project Elements

- Retrofit existing abutments to support new structures
- Utility relocations
- Temporary street closures
- Demolition/construction
- Paving and street improvements



Next Steps



Community Outreach

- Community meetings – Feb. 25 & 27, 2014
 - Visitacion Valley Library and Potrero Hill Neighborhood House
- Community Based Organizations
- Neighborhood Groups
- Local Developers
- Notification Process
 - Notices/mailers (residents, businesses, community based organizations)
 - Special project Web page www.caltrain.com/SFRB, with subscribe option
 - Social media (Facebook & Twitter)
 - Responses to individual public requests and questions
 - News releases

Next Steps

- Advertise and award of construction contract
 - June 2014 to September 2014
- Continue communications and dialogue with residents and businesses regarding project
- Next community meeting to be held prior to construction (Late Fall 2014)

More Info

- www.caltrain.com/SFRB
 - Subscribe to updates
- Email: sfrb@samtrans.com
- Construction Outreach Hotline: 650.508.7726



Questions ?

