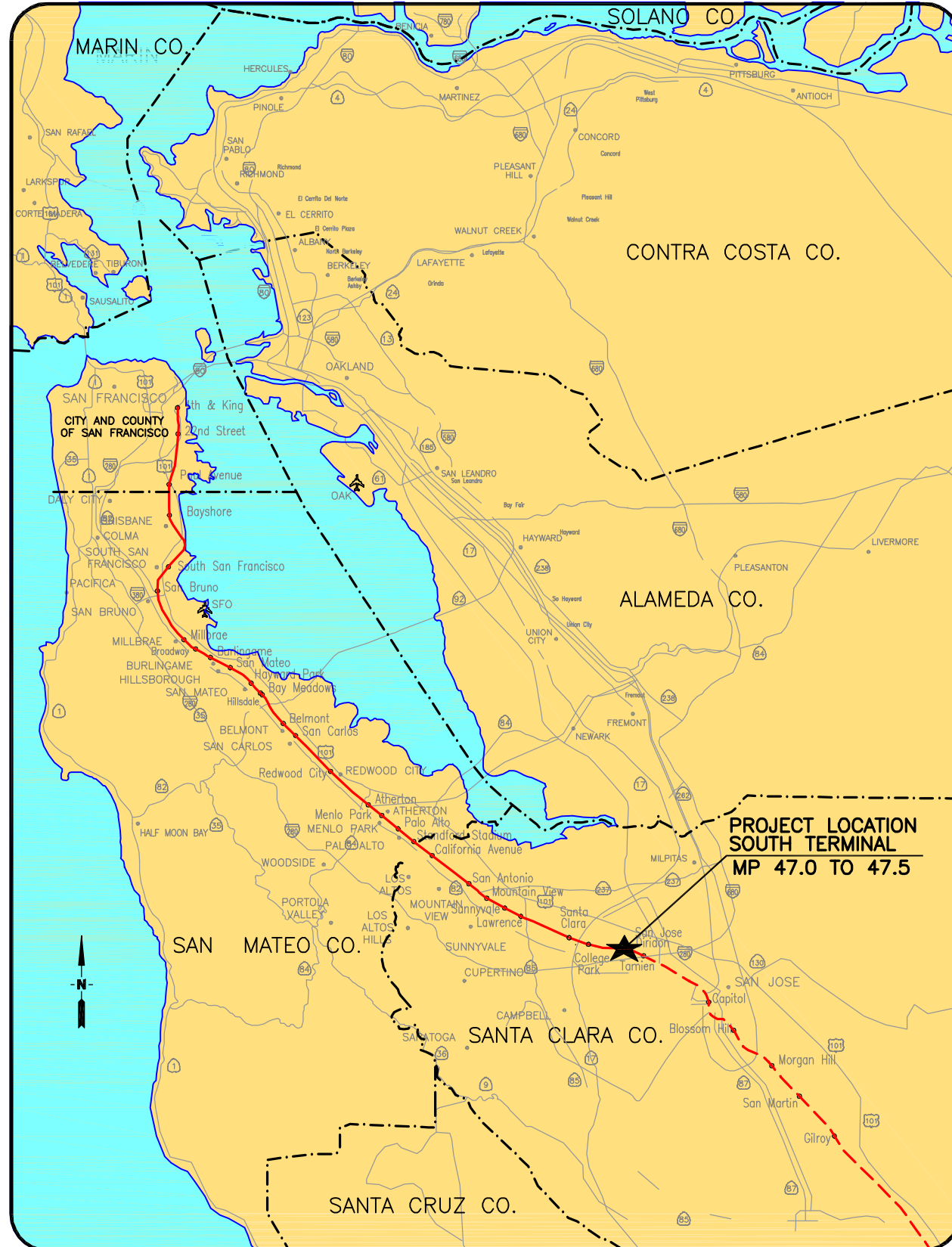


Appendix A: Conceptual Engineering

SAN FRANCISCO BAY AREA



SOUTH TERMINAL PHASE II PROJECT CONCEPTUAL ENGINEERING

PENINSULA CORRIDOR JOINT POWERS BOARD

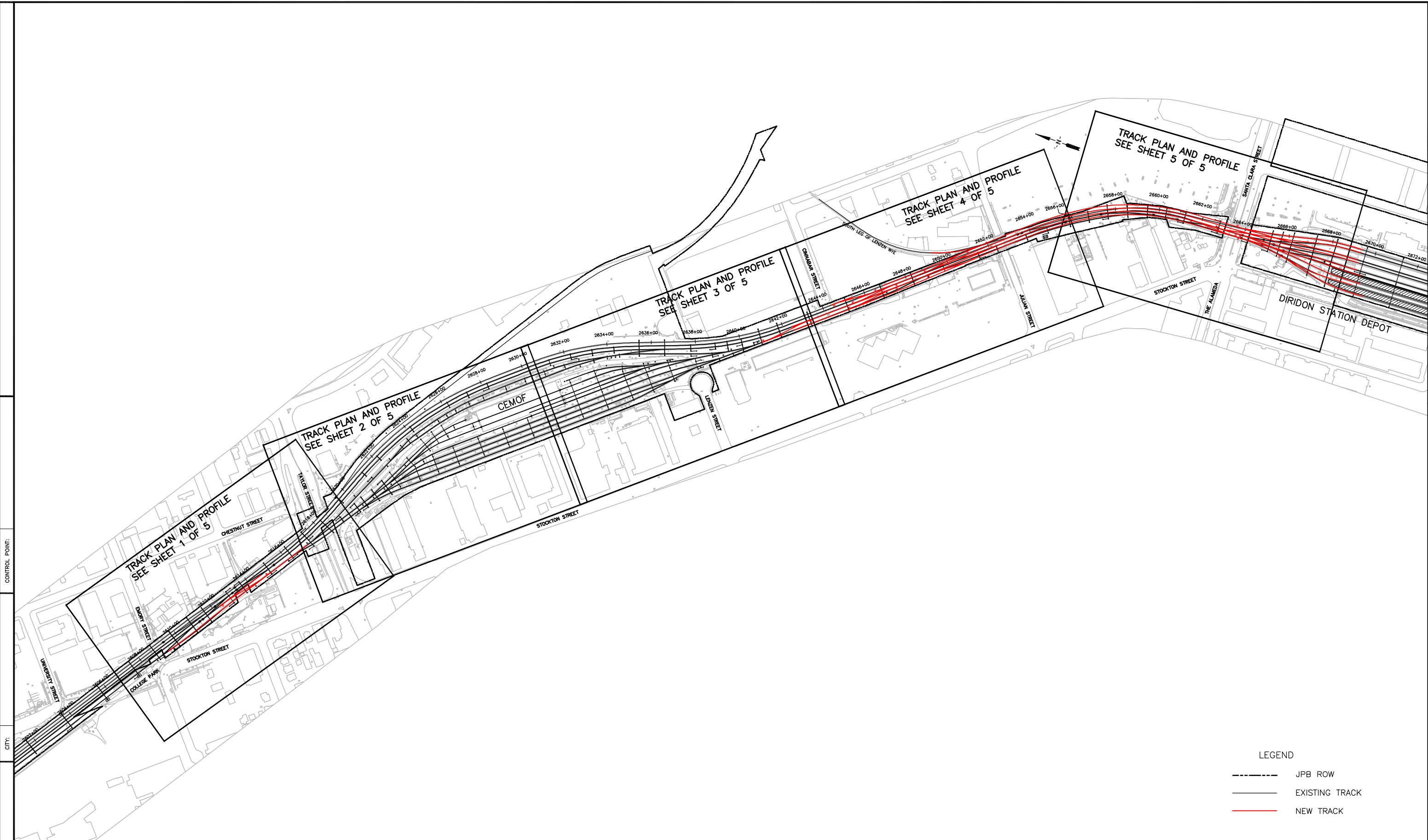


RSE, INC.
1075 OLD COUNTY ROAD
BELMONT, CA 94002
WWW.RSERAIL.COM

JUNE 10, 2015

DRAFT

chong Jun 10, 2015 5:34pm H:\Projects\JPB15584\04-CAD\Master\TRACK DESIGN-LAYOUT2.dwg
 COUNTY:



LEGEND

-----	JPB ROW
_____	EXISTING TRACK
_____	NEW TRACK

REV	DATE	BY	SUB	APP	DESCRIPTION	REV	DATE	BY	SUB	APP	DESCRIPTION

DESIGNED	APPROVED
DRAWN	
CHECKED	
IN CHARGE	
DATE	

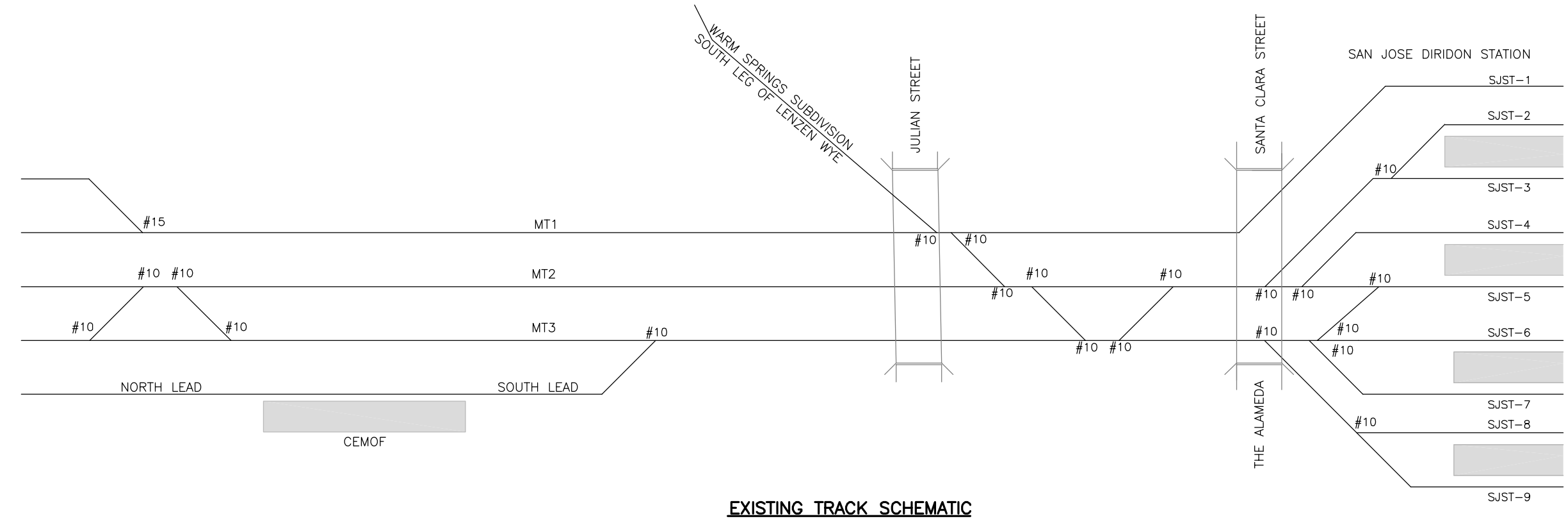
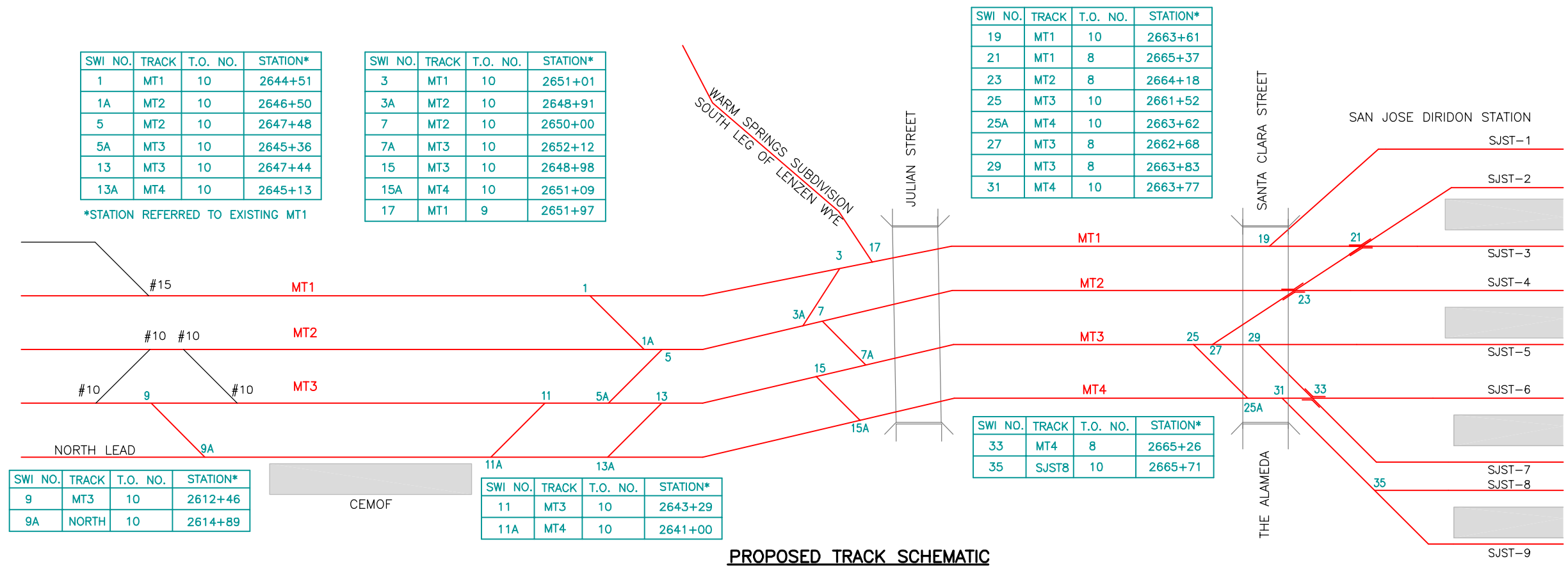


DEPUTY DIRECTOR
PROJECT MANAGEMENT
STRUCTURES
TRACK/CIVIL

PENINSULA CORRIDOR JOINT POWERS BOARD
 SOUTH TERMINAL PHASE II PROJECT
 OVERALL TRACK LAYOUT
 SHEET 1 OF 1

CADD FILE NAME	CADD DATE
SCALE 1" = 200'	MILEPOST
DWG NO	REV PAGE NO 2

H:\Projects\JPB15584\04-CAD\Master\SCHMATIC2.dwg
 Jun 10, 2015 - 2:54pm
 COUNTY: CITY:



REV	DATE	BY	SUB	APP	DESCRIPTION	REV	DATE	BY	SUB	APP	DESCRIPTION

DESIGNED	
DRAWN	
CHECKED	
IN CHARGE	
DATE	
APPROVED	

DEPUTY DIRECTOR

 PROJECT MANAGEMENT

 STRUCTURES

 TRACK/CIVIL

 1250 San Carlos Avenue

 San Carlos, CA 94070

PENINSULA CORRIDOR JOINT POWERS BOARD

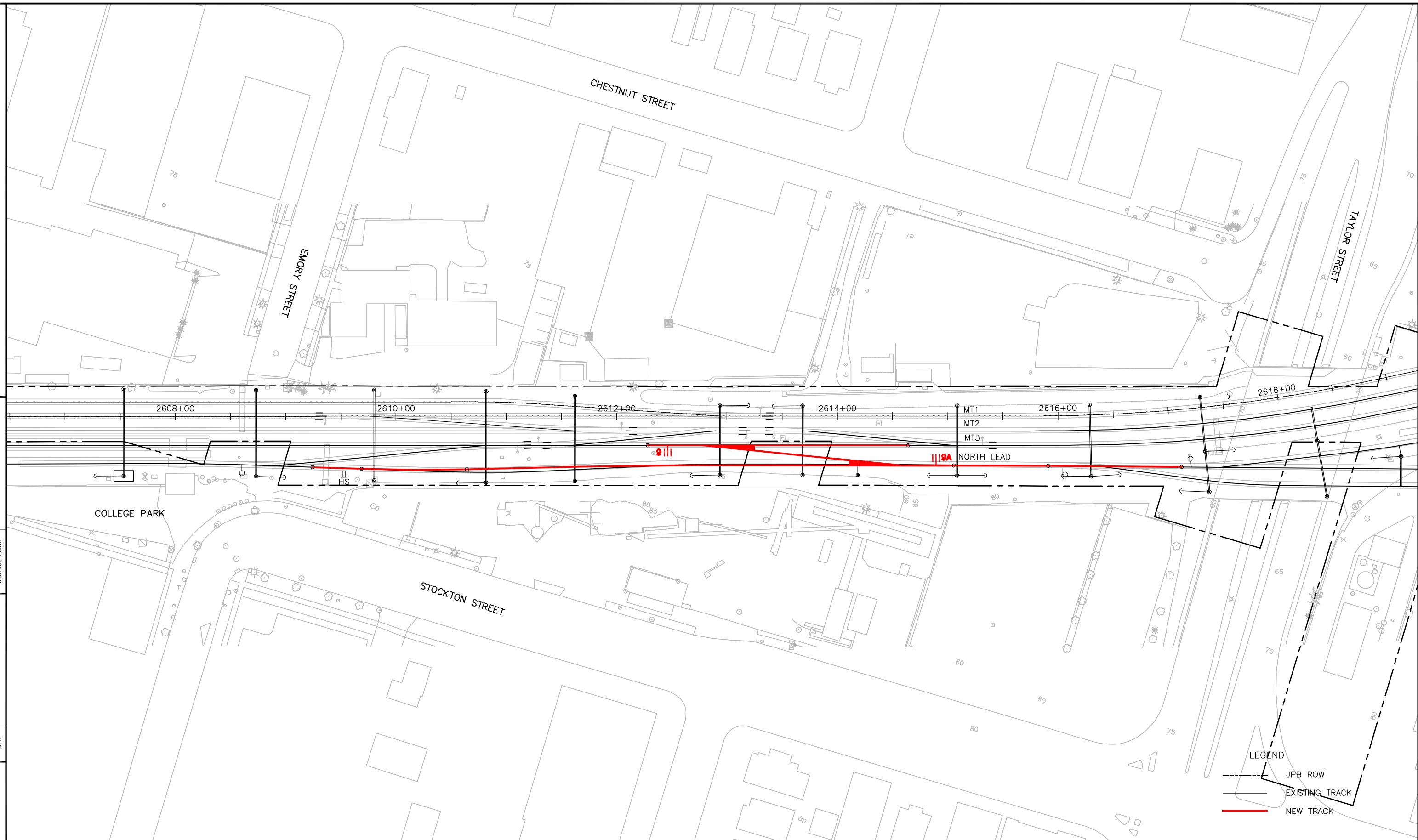
SOUTH TERMINAL PHASE II PROJECT

TRACK SCHEMATIC

SHEET 1 OF 1

CADD FILE NAME	CADD DATE
SCALE 1" = 200'	MILEPOST
DWG NO	REV PAGE NO 3

J:\Projects\JPB15584\04-CAD\Master\TRACK DESIGN\PLAN-PROFILE2.dwg
 Jun 10, 2015 - 3:15pm H:\Projects\JPB15584\04-CAD\Master\TRACK DESIGN\PLAN-PROFILE2.dwg
 COUNTY: CITY: CONTROL POINT:



REV	DATE	BY	SUB	APP	DESCRIPTION	REV	DATE	BY	SUB	APP	DESCRIPTION

DESIGNED	APPROVED
DRAWN	
CHECKED	
IN CHARGE	
DATE	

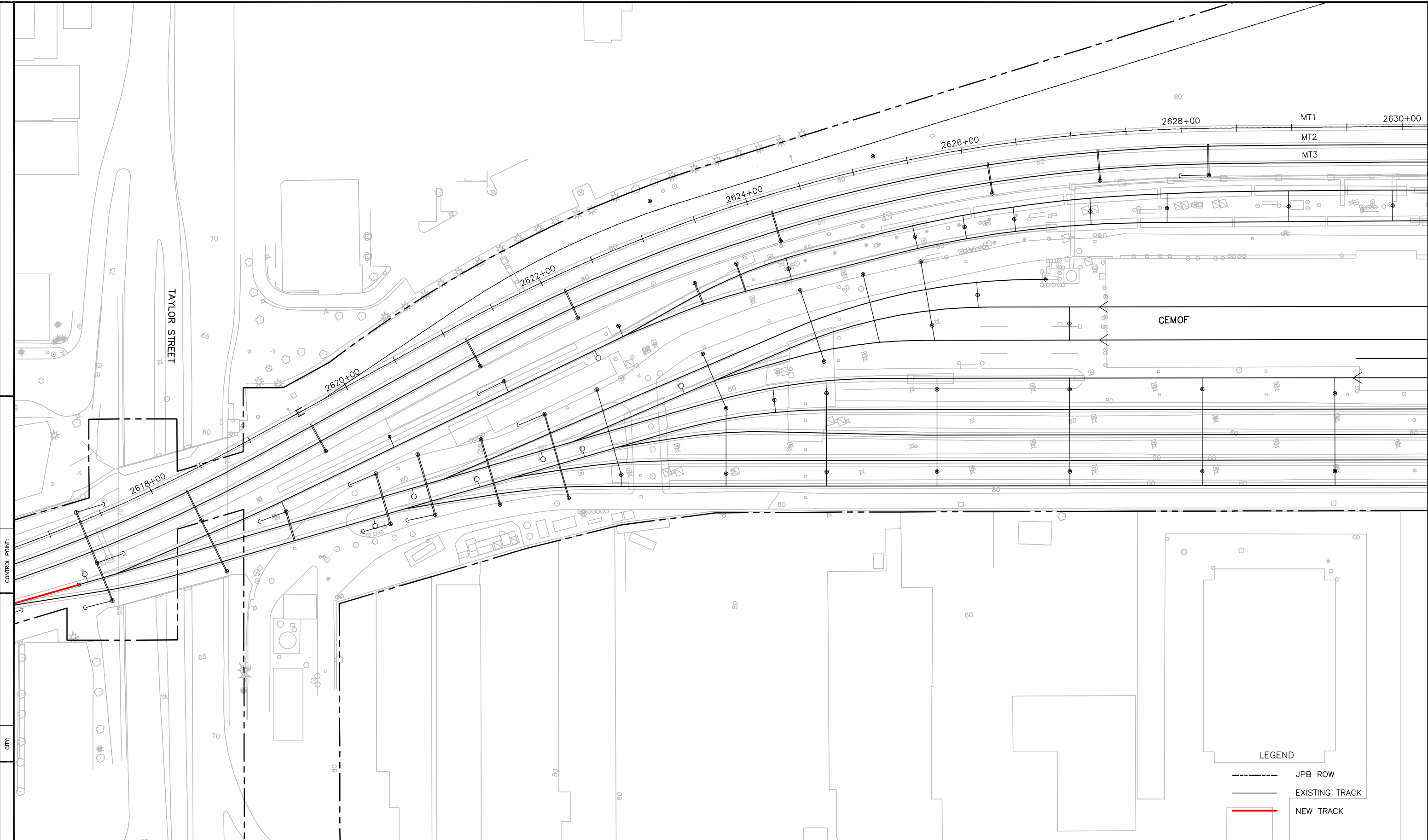


DEPUTY DIRECTOR
PROJECT MANAGEMENT
STRUCTURES
TRACK/CML

PENINSULA CORRIDOR JOINT POWERS BOARD
 SOUTH TERMINAL PHASE II PROJECT
 TRACK PLAN AND PROFILE
 SHEET 1 OF 5


CADD FILE NAME	CADD DATE
SCALE 1"=40'	MILEPOST
CONTRACT NO	REV
DWG NO	PAGE NO 4

J:\Projects\JPB1584\04-CAD\Master\TRACK DESIGN-PLAN-PROFILE2.dwg
 Jun 10, 2015 - 3:15pm H:\Projects\JPB1584\04-CAD\Master\TRACK DESIGN-PLAN-PROFILE2.dwg
 COUNTY:



REV	DATE	BY	SUB	APP	DESCRIPTION	REV	DATE	BY	SUB	APP	DESCRIPTION

DESIGNED	
DRAWN	
CHECKED	
IN CHARGE	
DATE	
APPROVED	

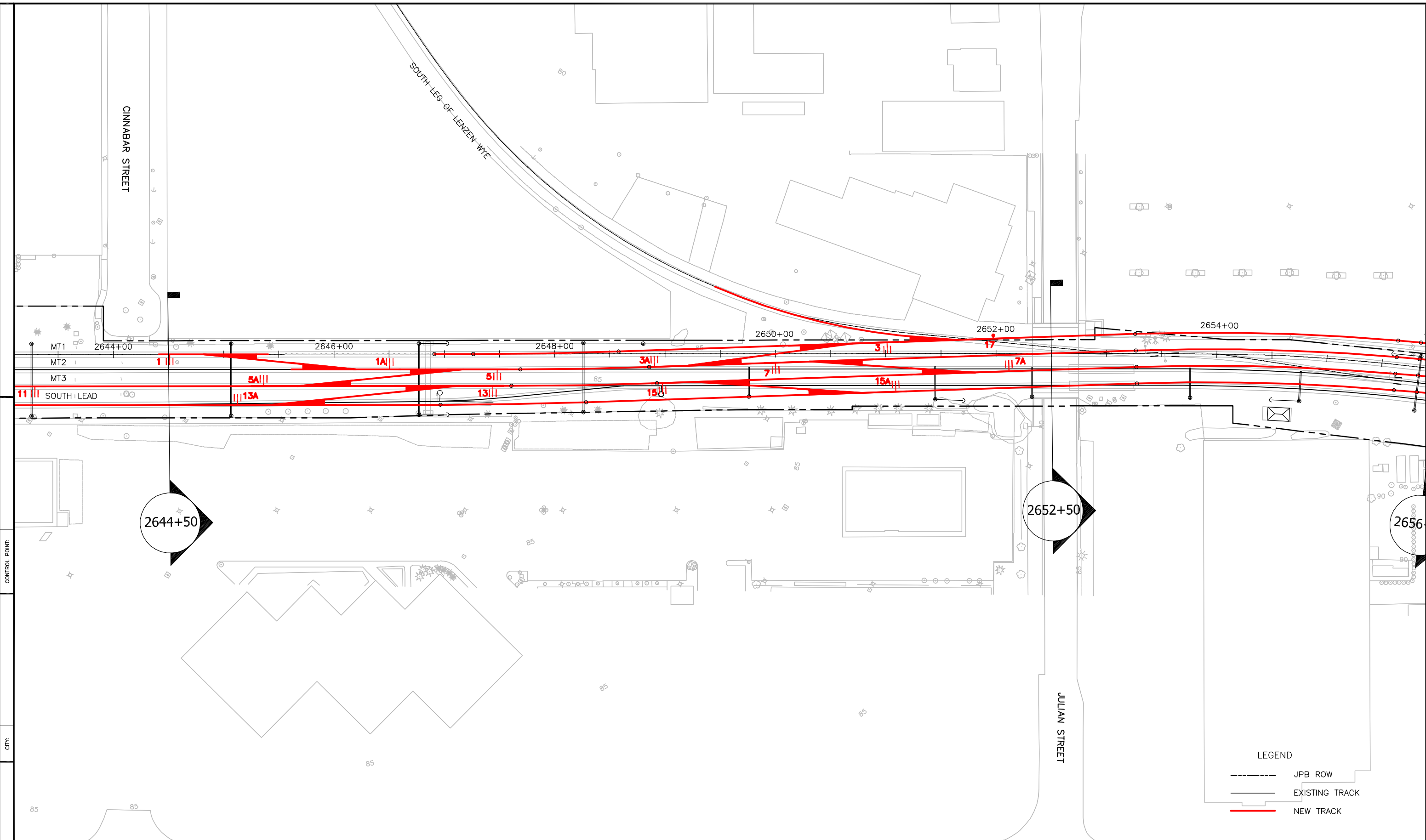

 1250 San Carlos Avenue
 San Carlos, CA 94070

DEPUTY DIRECTOR
 PROJECT MANAGEMENT
 STRUCTURES
 TRACK/CML

PENINSULA CORRIDOR JOINT POWERS BOARD
 SOUTH TERMINAL PHASE II PROJECT
 TRACK PLAN AND PROFILE
 SHEET 2 OF 5


CADD FILE NAME	CADD DATE
SCALE 1"=40'	MILEPOST
CONTRACT NO	
DWG NO	REV PAGE NO 5

H:\Projects\JPB15584\04-CAD\Master\TRACK DESIGN-PLAN-PROFILE2.dwg
 Jun 10, 2015 - 3:16pm
 COUNTY:



REV	DATE	BY	SUB	APP	DESCRIPTION

DESIGNED	APPROVED
DRAWN	
CHECKED	
IN CHARGE	
DATE	


 1250 San Carlos Avenue
 San Carlos, CA 94070

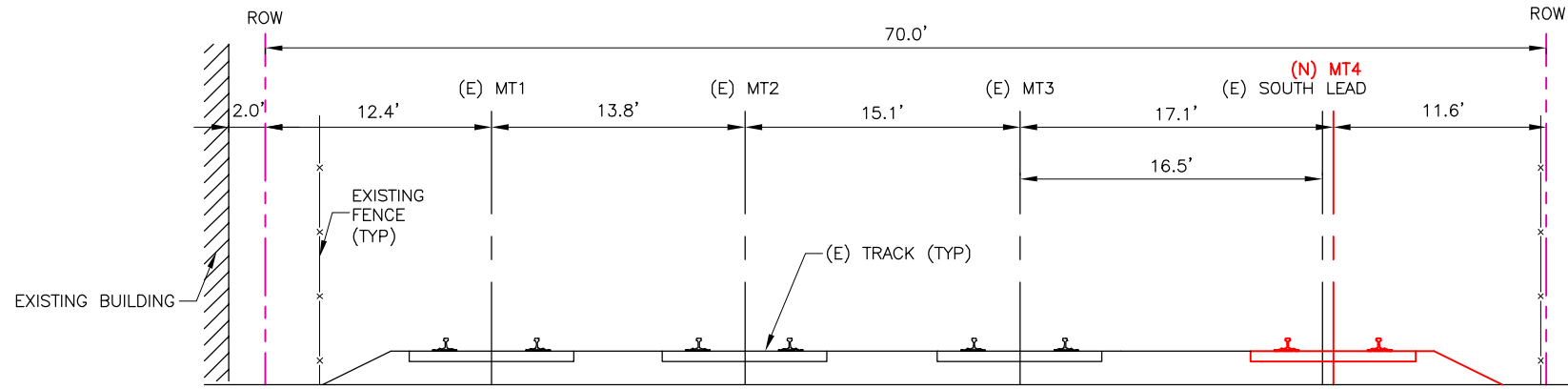
DEPUTY DIRECTOR
 PROJECT MANAGEMENT
 STRUCTURES
 TRACK/CML
PENINSULA CORRIDOR JOINT POWERS BOARD
 SOUTH TERMINAL PHASE II PROJECT
 TRACK PLAN AND PROFILE
 SHEET 4 OF 5

CADD FILE NAME	CADD DATE
SCALE 1"=40'	MILEPOST
CONTRACT NO	REV
DWG NO	PAGE NO 7

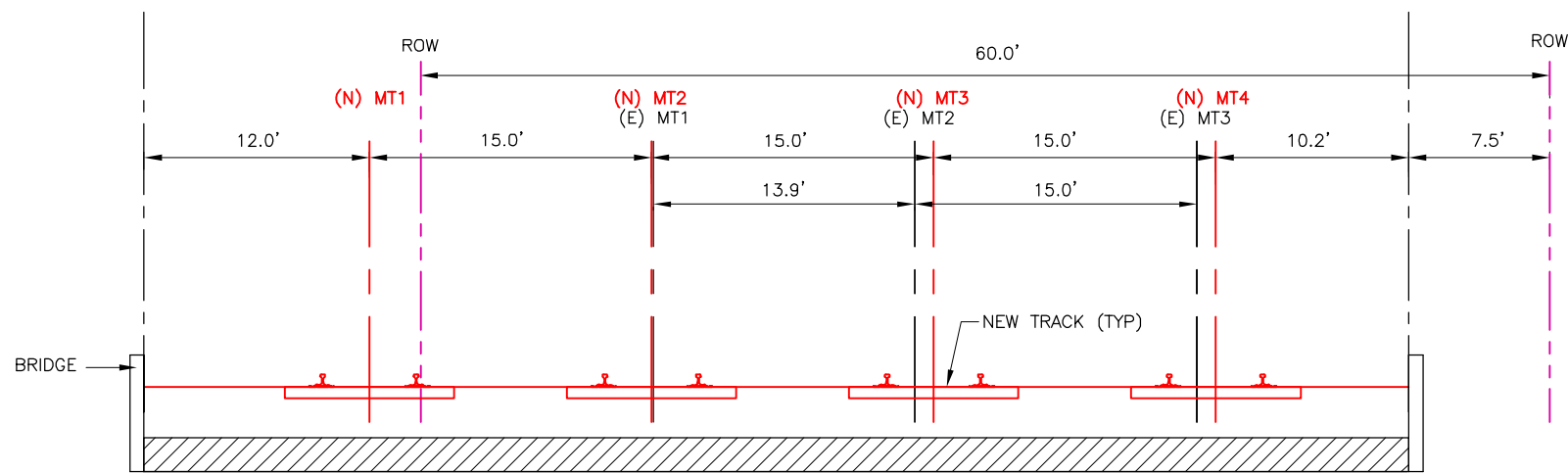
jganchez Jun 10, 2015 - 3:41pm H:\Projects\JPB15584\04-CAD\Master\SECTION2.dwg

CONTROL POINT:

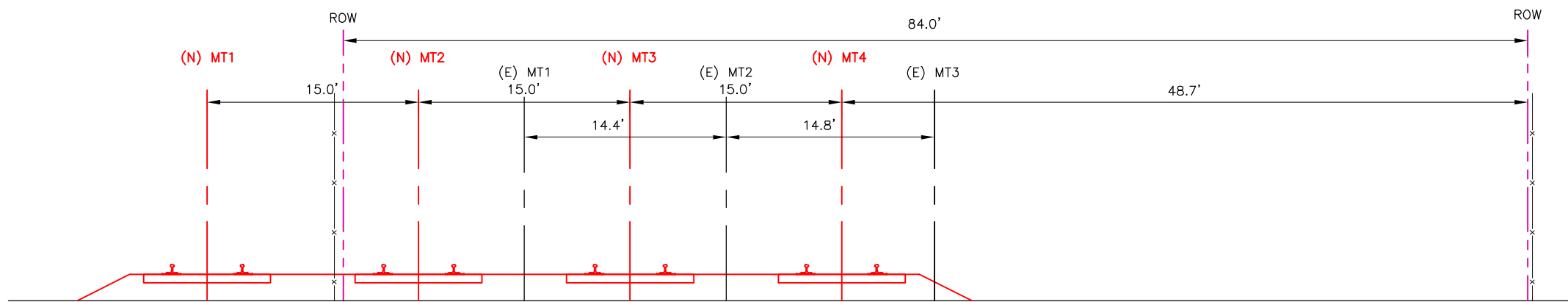
CITY:



STA 2644+50



STA 2652+50



STA 2656+00

REV	DATE	BY	SUB	APP	DESCRIPTION	REV	DATE	BY	SUB	APP	DESCRIPTION

DESIGNED	APPROVED
DRAWN	
CHECKED	
IN CHARGE	
DATE	



DEPUTY DIRECTOR
PROJECT MANAGEMENT
STRUCTURES
TRACK/CIVIL

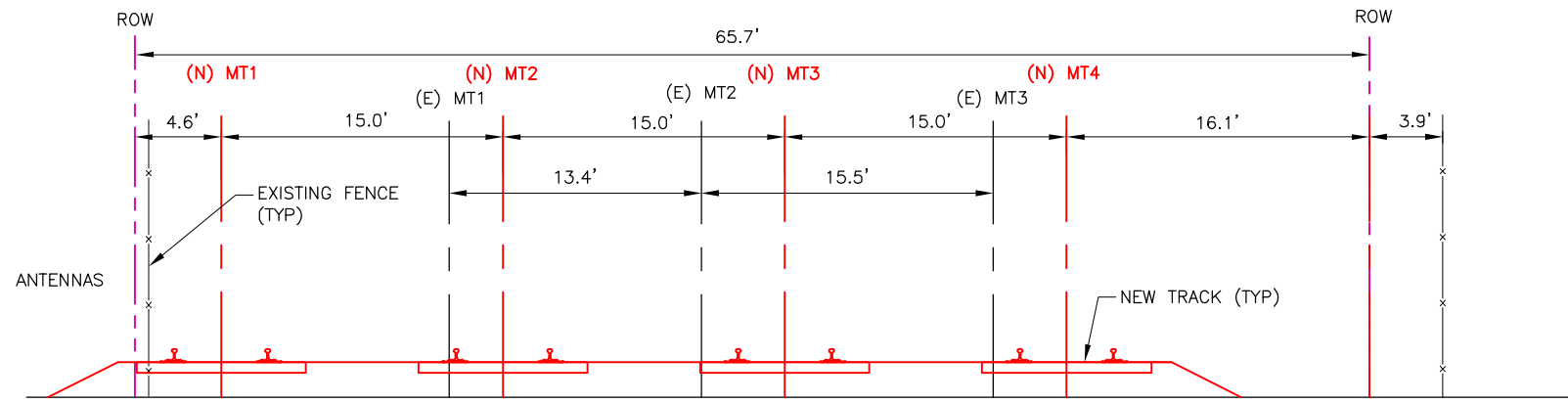
PENINSULA CORRIDOR JOINT POWERS BOARD
SOUTH TERMINAL PHASE II PROJECT
SECTIONS
SHEET 1 OF 2

CADD FILE NAME	CADD DATE
SCALE 1"=5'	MILEPOST
DWG NO	REV
PAGE NO 9	

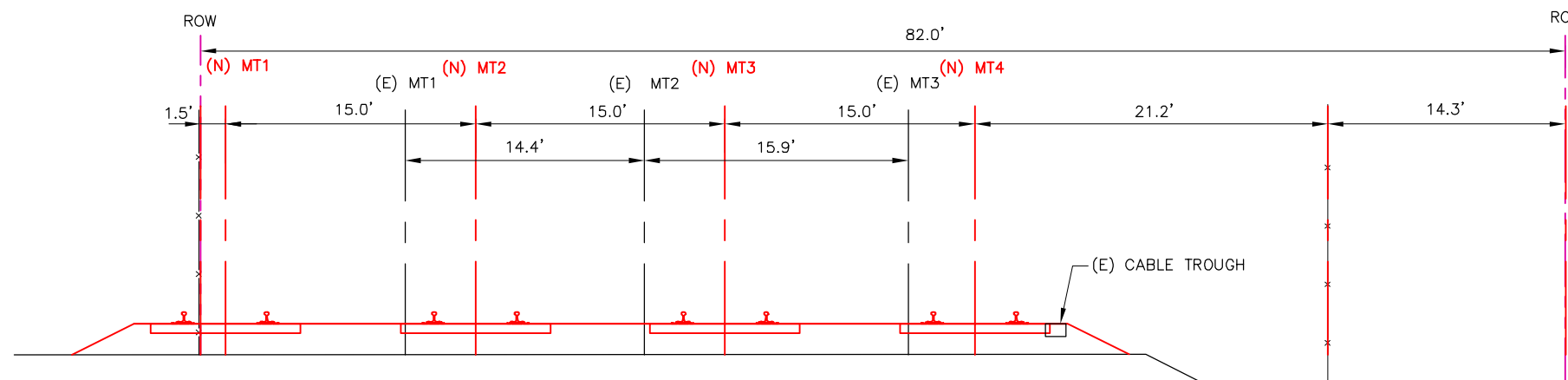
jganchez Jun 10, 2015 - 3:40pm H:\Projects\JPB15584\04-CAD\Master\SECTION2.dwg

CONTROL POINT:

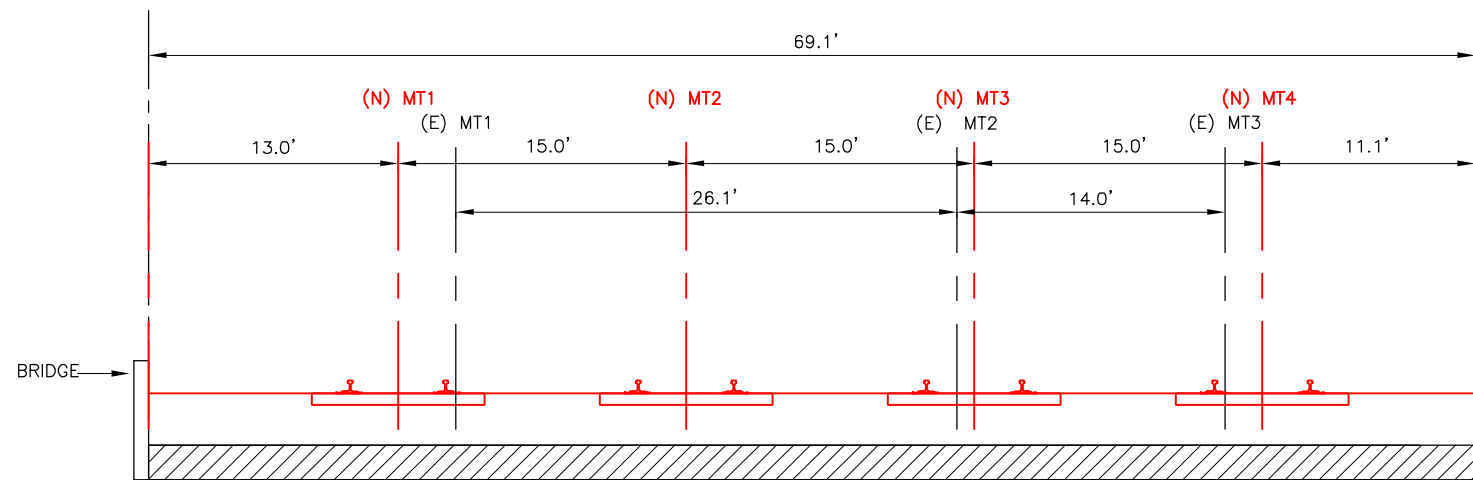
CITY:



STA 2659+00



STA 2661+00



STA 2663+50

REV	DATE	BY	SUB	APP	DESCRIPTION	REV	DATE	BY	SUB	APP	DESCRIPTION

DESIGNED	APPROVED
DRAWN	
CHECKED	
IN CHARGE	
DATE	



DEPUTY DIRECTOR
PROJECT MANAGEMENT
STRUCTURES
TRACK/CIVIL







PENINSULA CORRIDOR JOINT POWERS BOARD
SOUTH TERMINAL PHASE II PROJECT
SECTIONS
SHEET 2 OF 2

CADD FILE NAME	CADD DATE
SCALE 1"=5'	MILEPOST
DWG NO	REV PAGE NO 10

c:\check\ Oct. 30, 2015 - 6:22pm C:\Users\ccheuk\appdata\local\temp\AcPublish_5664\T101-105-AERIAL.dwg



LEGEND

-  EXISTING JPB ROW
-  PROPOSED JPB ROW
-  EXISTING TRACK
-  PROPOSED TRACK
-  ROW ACQUISITION
-  PARKING SPACES TO BE REMOVED

NOTE:

CALTRAIN ROW AND OCS FILES FROM CALMOD WERE RECEIVED ON 9/17/2015.

REV	DATE	BY	SUB	APP	DESCRIPTION

DESIGNED
DRAWN
CHECKED
IN CHARGE
DATE

APPROVED



DEPUTY DIRECTOR
PROJECT MANAGEMENT
STRUCTURES
TRACK/CIVIL

PENINSULA CORRIDOR JOINT POWERS BOARD

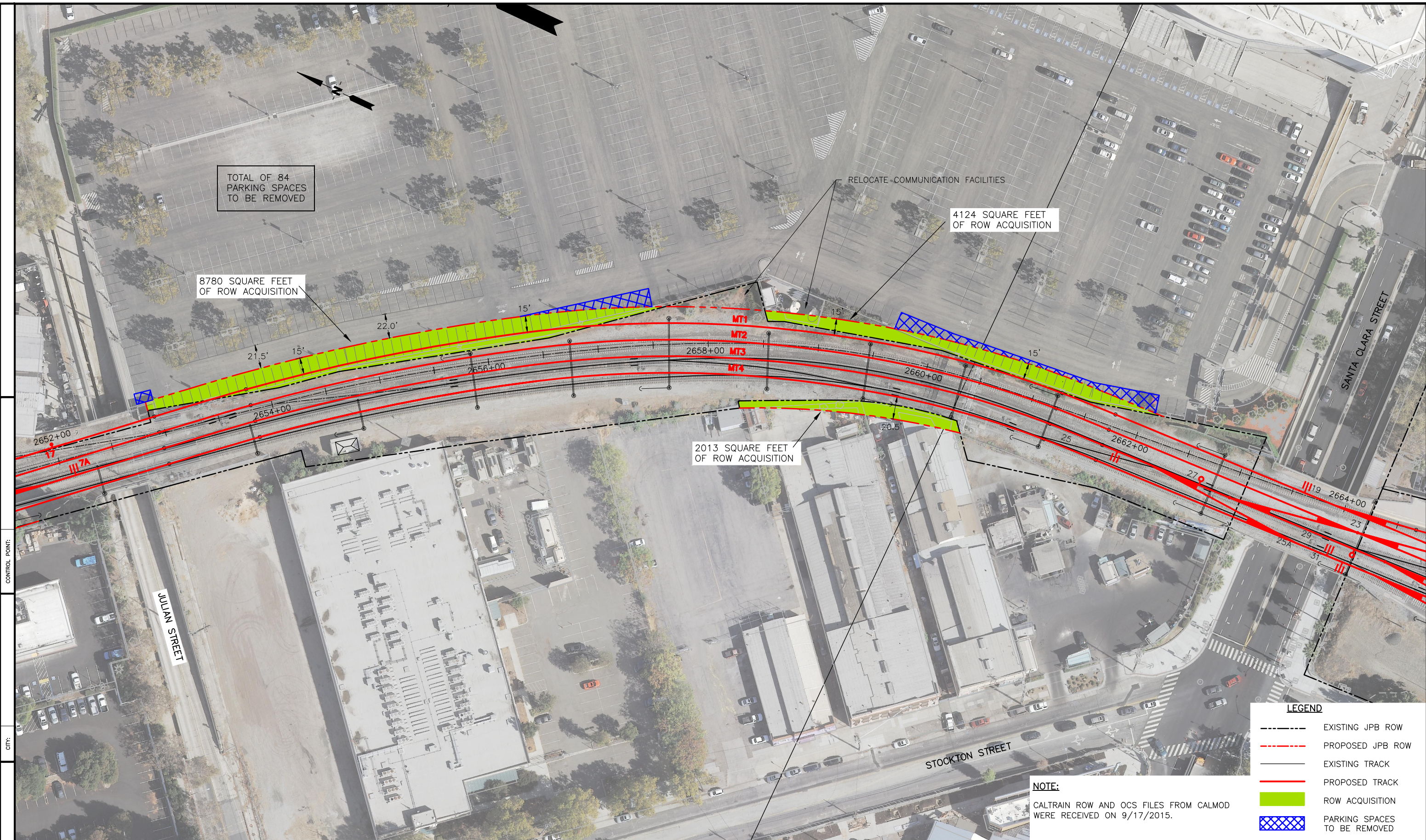
SOUTH TERMINAL PHASE II PROJECT

PARKING AND ROW IMPACT

SHEET 1 OF 2

CADD FILE NAME	CADD DATE
SCALE 1"=40'	MILEPOST
DWG NO	REV PAGE NO 1

c:\check Oct 30, 2015 6:23pm C:\Users\ccheuk\appdata\local\temp\AcPublish_5664\T101-105-AERIAL.dwg



TOTAL OF 84
PARKING SPACES
TO BE REMOVED

8780 SQUARE FEET
OF ROW ACQUISITION

4124 SQUARE FEET
OF ROW ACQUISITION

2013 SQUARE FEET
OF ROW ACQUISITION


LEGEND

- EXISTING JPB ROW
- - - PROPOSED JPB ROW
- EXISTING TRACK
- PROPOSED TRACK
- ROW ACQUISITION
- ▣ PARKING SPACES TO BE REMOVED

NOTE:
CALTRAIN ROW AND OCS FILES FROM CALMOD
WERE RECEIVED ON 9/17/2015.

REV	DATE	BY	SUB	APP	DESCRIPTION	REV	DATE	BY	SUB	APP	DESCRIPTION

DESIGNED	APPROVED
DRAWN	
CHECKED	
IN CHARGE	
DATE	



1250 San Carlos Avenue
San Carlos, CA 94070

DEPUTY DIRECTOR

PROJECT MANAGEMENT

STRUCTURES

TRACK/CIVIL

PENINSULA CORRIDOR JOINT POWERS BOARD

SOUTH TERMINAL PHASE II PROJECT

PARKING AND ROW IMPACT

SHEET 2 OF 2

CADD FILE NAME	CADD DATE
SCALE 1"=40'	MILEPOST
DWG NO	REV PAGE NO 2

c:\Users\ccheuk\appdata\local\temp\AcPublish_5384\G101-105.dwg

CONTROL POINT:

CITY:

COUNTY:




LEGEND

- EXISTING ROW
- - - PROPOSED JPB ROW
- EXISTING TRACK
- PROPOSED TRACK
- DEPTH 0'-5' SUBGRADE AND SUBBALLAST EXCAVATION, HMAC PLACING, BALLAST RETAINER, UTILITY AND SIGNAL CONDUITS EXCAVATION
- ▨ DEPTH UP TO 20' SIGNAL BRIDGE FOUNDATION

REV	DATE	BY	SUB	APP	DESCRIPTION	REV	DATE	BY	SUB	APP	DESCRIPTION

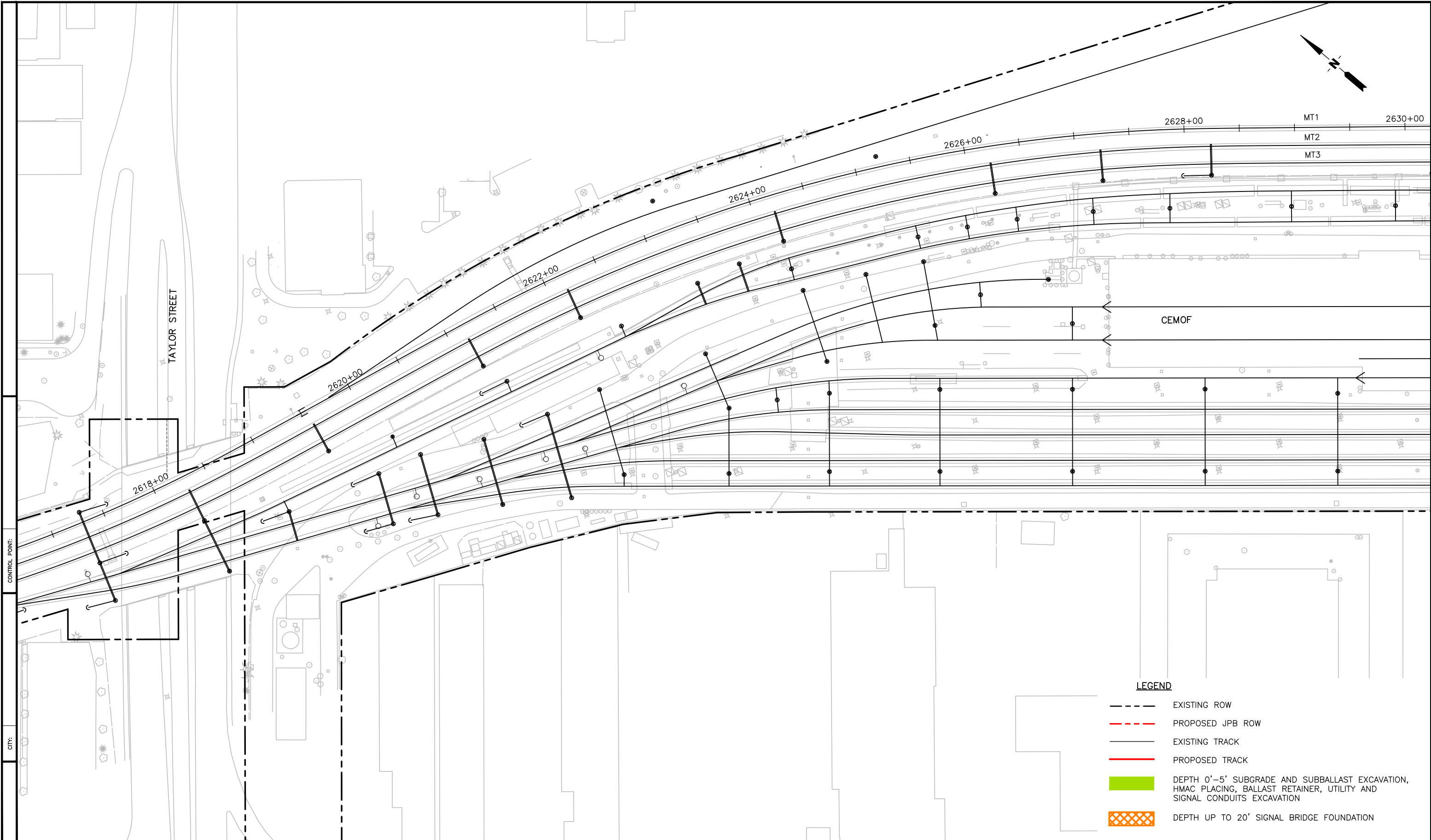
DESIGNED DRAWN CHECKED IN CHARGE DATE	APPROVED
---	----------



1250 San Carlos Avenue
San Carlos, CA 94070

PENINSULA CORRIDOR JOINT POWERS BOARD		CADD FILE NAME	CADD DATE
SOUTH TERMINAL PHASE II PROJECT		SCALE 1"=40'	
EXCAVATION AND GRADING		CONTRACT NO	MILEPOST
SHEET 1 OF 5		DWG NO G101	REV PAGE NO 52

c:\Users\ccheuk\AppData\Local\Temp\AcPublish_5384\G101-105.dwg




LEGEND

- EXISTING ROW
- PROPOSED JPB ROW
- EXISTING TRACK
- PROPOSED TRACK
- DEPTH 0'-5' SUBGRADE AND SUBBALLAST EXCAVATION, HMAC PLACING, BALLAST RETAINER, UTILITY AND SIGNAL CONDUITS EXCAVATION
- DEPTH UP TO 20' SIGNAL BRIDGE FOUNDATION

REV	DATE	BY	SUB	APP	DESCRIPTION

DESIGNED	
DRAWN	
CHECKED	
IN CHARGE	
DATE	
APPROVED	

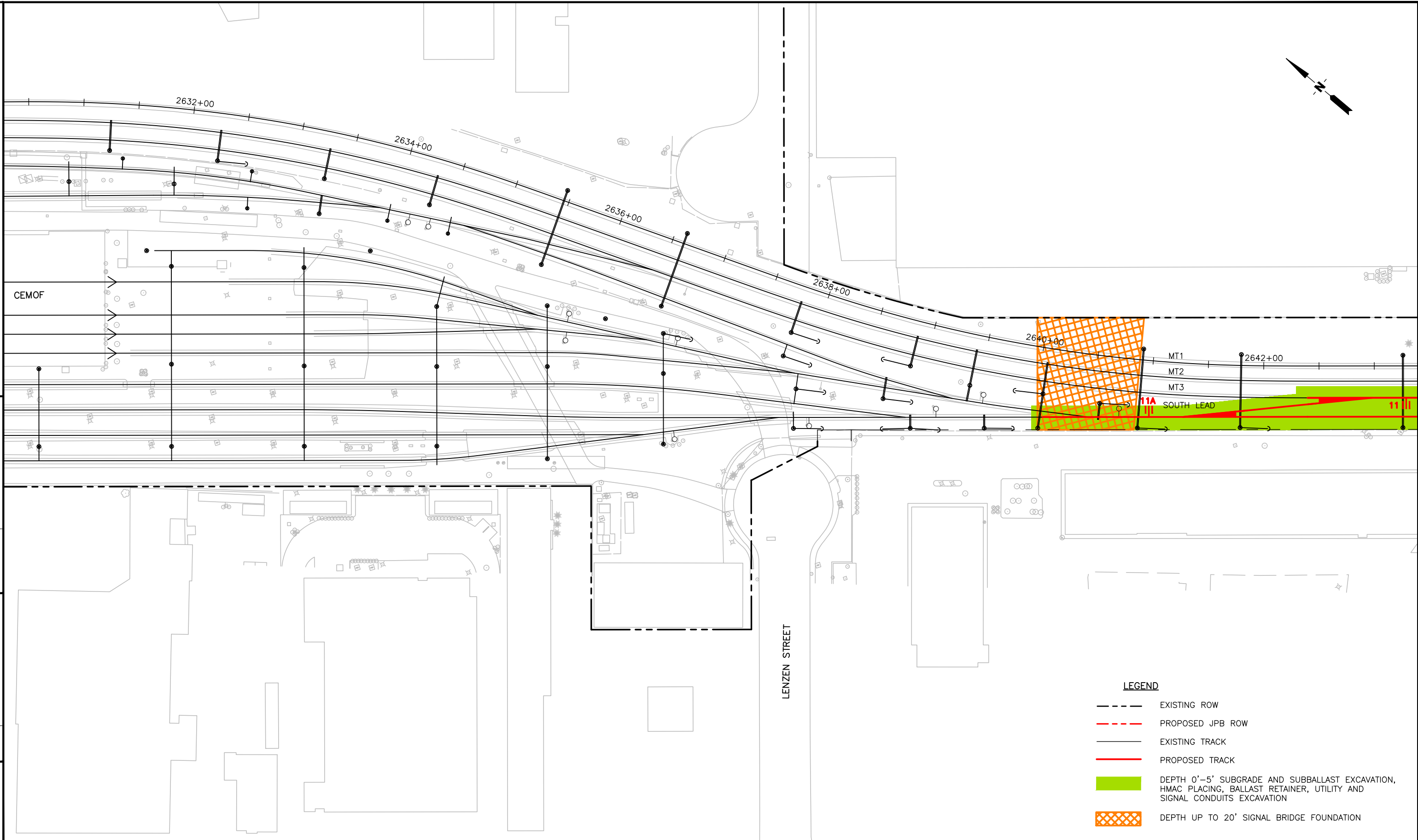


1250 San Carlos Avenue
San Carlos, CA 94070

PENINSULA CORRIDOR JOINT POWERS BOARD		CADD FILE NAME	CADD DATE
SOUTH TERMINAL PHASE II PROJECT		SCALE	
EXCAVATION AND GRADING		1"=40'	
SHEET 2 OF 5		CONTRACT NO	MILEPOST
DWG NO	REV	PAGE NO	
G102		53	

c:\Users\ccheuk\appdata\local\temp\AcPublish_5384\G101-105.dwg Mar 02, 2016 2:41 pm

COUNTY: CITY: CONTROL POINT:



LEGEND

- EXISTING ROW
- - - PROPOSED JPB ROW
- EXISTING TRACK
- PROPOSED TRACK
- DEPTH 0'-5' SUBGRADE AND SUBBALLAST EXCAVATION, HMAC PLACING, BALLAST RETAINER, UTILITY AND SIGNAL CONDUITS EXCAVATION
- DEPTH UP TO 20' SIGNAL BRIDGE FOUNDATION

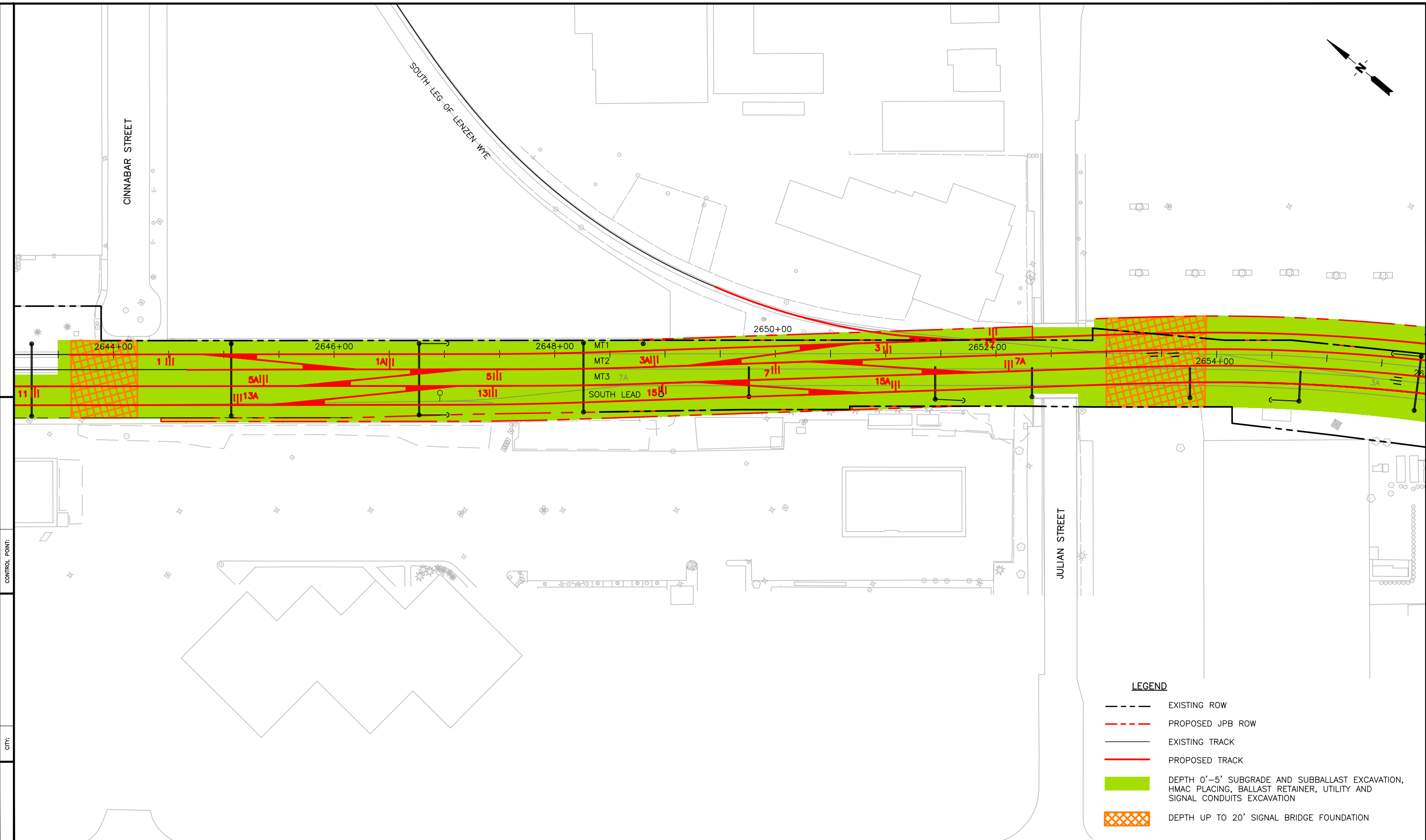
REV	DATE	BY	SUB	APP	DESCRIPTION	REV	DATE	BY	SUB	APP	DESCRIPTION

DESIGNED	 1250 San Carlos Avenue San Carlos, CA 94070	APPROVED
DRAWN		
CHECKED		
IN CHARGE		
DATE		

DEPUTY DIRECTOR	PROJECT MANAGEMENT
STRUCTURES	TRACK/CIVIL

PENINSULA CORRIDOR JOINT POWERS BOARD		CADD FILE NAME	CADD DATE
SOUTH TERMINAL PHASE II PROJECT		SCALE 1"=40'	
EXCAVATION AND GRADING		CONTRACT NO	MILEPOST
SHEET 3 OF 5		DWG NO G103	REV PAGE NO 54

c:\Users\ccheuk\appdata\local\temp\AcPublish_5384\G101-105.dwg



- LEGEND**
- EXISTING ROW
 - - - PROPOSED JPB ROW
 - EXISTING TRACK
 - PROPOSED TRACK
 - DEPTH 0'-5' SUBGRADE AND SUBBALLAST EXCAVATION, HMAC PLACING, BALLAST RETAINER, UTILITY AND SIGNAL CONDUITS EXCAVATION
 - ▣ DEPTH UP TO 20' SIGNAL BRIDGE FOUNDATION

REV	DATE	BY	SUB	APP	DESCRIPTION	REV	DATE	BY	SUB	APP	DESCRIPTION

DESIGNED	APPROVED
DRAWN	
CHECKED	
IN CHARGE	
DATE	

Caltrain

1250 San Carlos Avenue
San Carlos, CA 94070

DEPUTY DIRECTOR
PROJECT MANAGEMENT
STRUCTURES
TRACK/CIVIL

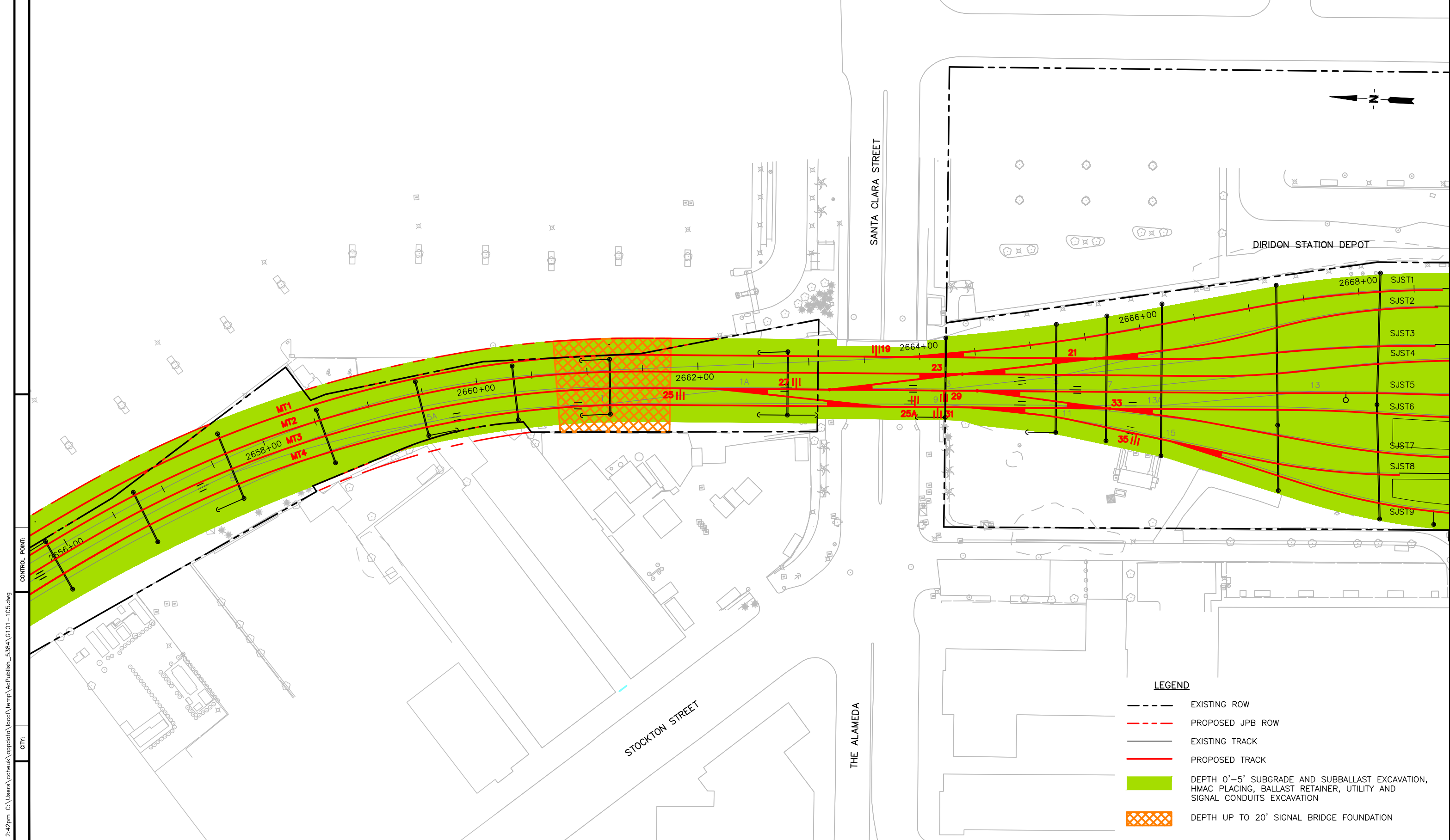
PENINSULA CORRIDOR JOINT POWERS BOARD

SOUTH TERMINAL PHASE II PROJECT

EXCAVATION AND GRADING

SHEET 4 OF 5

CADD FILE NAME	CADD DATE
SCALE 1"=40'	MILEPOST
CONTRACT NO	DWG NO G104
REV	PAGE NO 55



c:\Users\ccheuk\appdata\local\temp\AcPublish_5384\G101-105.dwg
 Mar 02, 2016 2:42pm
 COUNTY:

REV	DATE	BY	SUB	APP	DESCRIPTION	REV	DATE	BY	SUB	APP	DESCRIPTION

DESIGNED
DRAWN
CHECKED
IN CHARGE
DATE

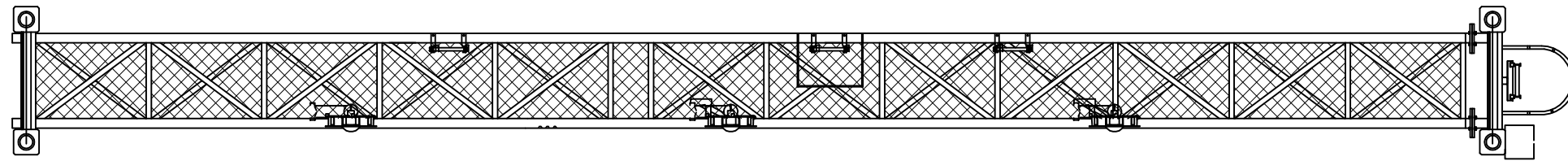
APPROVED _____

1250 San Carlos Avenue
San Carlos, CA 94070

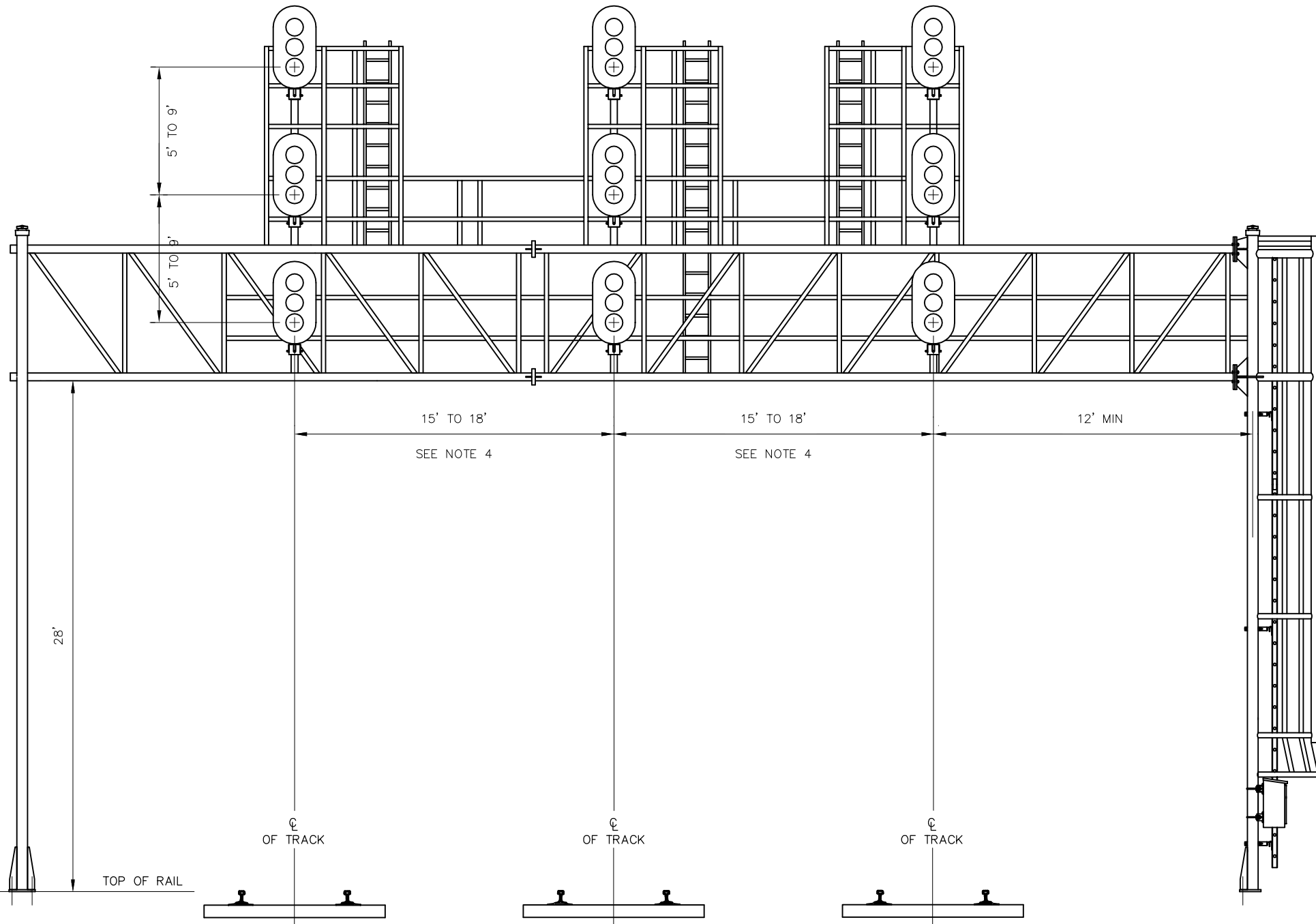
DEPUTY DIRECTOR
PROJECT MANAGEMENT
STRUCTURES
TRACK/CIVIL

PENINSULA CORRIDOR JOINT POWERS BOARD
SOUTH TERMINAL PHASE II PROJECT
 EXCAVATION AND GRADING
 SHEET 5 OF 5

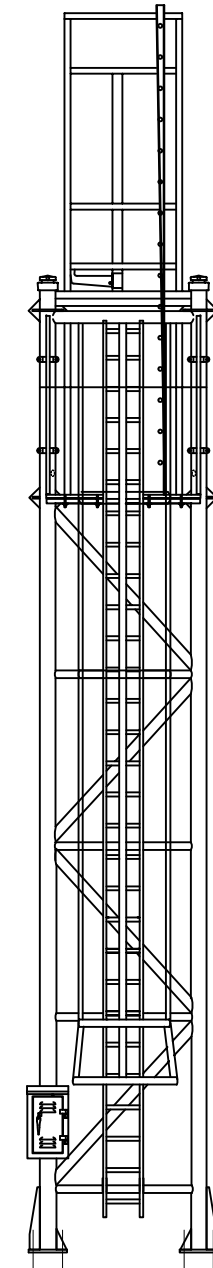
CADD FILE NAME	CADD DATE
SCALE 1"=40'	MILEPOST
CONTRACT NO	DWG NO G105
REV	PAGE NO 56



TOP VIEW



FRONT VIEW



SIDE VIEW

NOTES:

1. BASE OF BRIDGE MAST SHALL BE LEVEL WITH TOP OF HIGHEST RAIL
2. 41" X 73 3/4" X 24" FREE STANDING POWDER COATED STEEL JUNCTION CASE REQUIRED WHERE MAST MOUNTED JUNCTION CASE DOES NOT HAVE SUFFICIENT CAPACITY
3. BRIDGE LADDERS AND CAGES SHALL MEET ALL OSHA REQUIREMENTS
4. SPACING OF BRIDGE MOUNTED SIGNALS VARIES PER LOCATION AND WILL BE DETERMINED DURING DESIGN

FOOTING REQUIREMENTS:

1. A LAYER OF CRUSHED ROCKS, 3/4" X 1/4" SHALL BE PLACED AROUND STRUCTURE A MINIMUM DISTANCE OF 4'. PROVIDE RETAINING WALL IF REQUIRED

REV	DATE	BY	CHK	APP	DESCRIPTION	REV	DATE	BY	CHK	APP
0	030507	JDP			100% SUBMITTAL					
1	122106	JDP			85% SUBMITTAL					

PENINSULA CORRIDOR JOINT POWERS BOARD

APPROVED BY:

ENGINEERING MANAGER

DEPUTY DIRECTOR OF ENGINEERING

1250 San Carlos Avenue
San Carlos, CA 94070

STANDARD DRAWINGS		CADD FILE NO.:
SIGNAL AND COMMUNICATION SIGNAL APPARATUS SIGNAL BRIDGE TYPICAL SIGNAL BRIDGE		SD-5209
		REV 0 DATE 093011
		SIGNAL
		STANDARD NO.: SD-5209