



South Terminal Phase II Project

Community Meeting

April 21, 2016

Agenda

I. Overview

II. Project Description

III. Environmental Process

IV. Project Construction

V. Project Benefits

VI. Community Outreach

VII. Questions



Overview

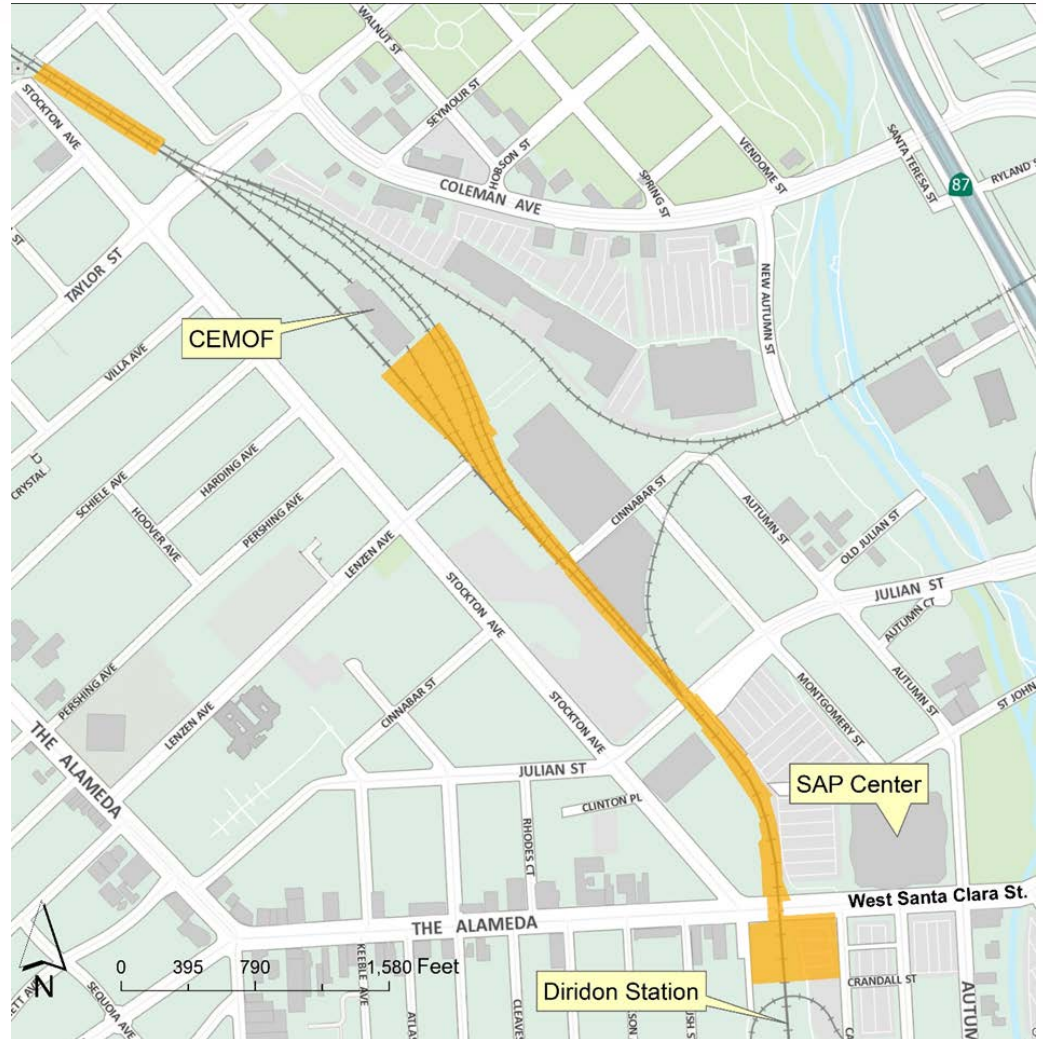




Project Location

Located along Caltrain line in San Jose:

- San Jose Diridon Station to Caltrain Centralized Equipment Maintenance and Operations Facility (CEMOF)
- Taylor St. to Emory St. (north of CEMOF)
- Primarily within existing right-of-way



Purpose and Need

- Maintain operational flexibility and minimize delays by allowing out-of-service trains to move to and from CEMOF without conflicting with in-service (e.g., trains carrying passengers).
- Address operational bottleneck.
- Improve the ability of Caltrain service to respond to unanticipated events, such as delayed trains, weather, or mechanical issues.



Project Description



Project Elements

- New fourth track on east side of existing tracks (approx. 2,000 feet in length) from Diridon Station to CEMOF plus several thousand feet of existing track replaced with new track
- Realign existing tracks to accommodate new track
- 9 cross-overs/ 6 turnouts/ 3 slip-switches
- New signal controls



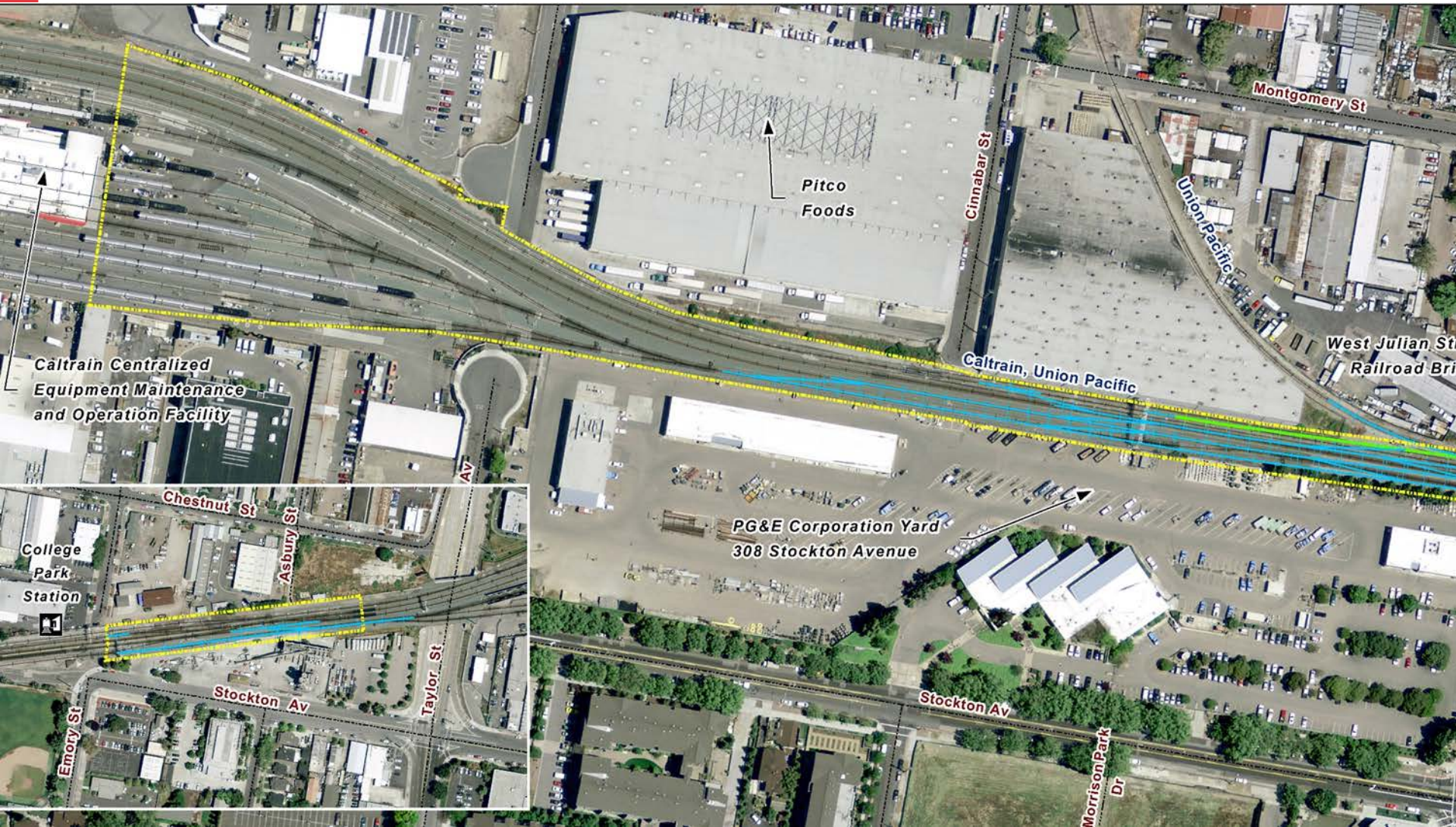


Project Elements-South





Project Elements-North



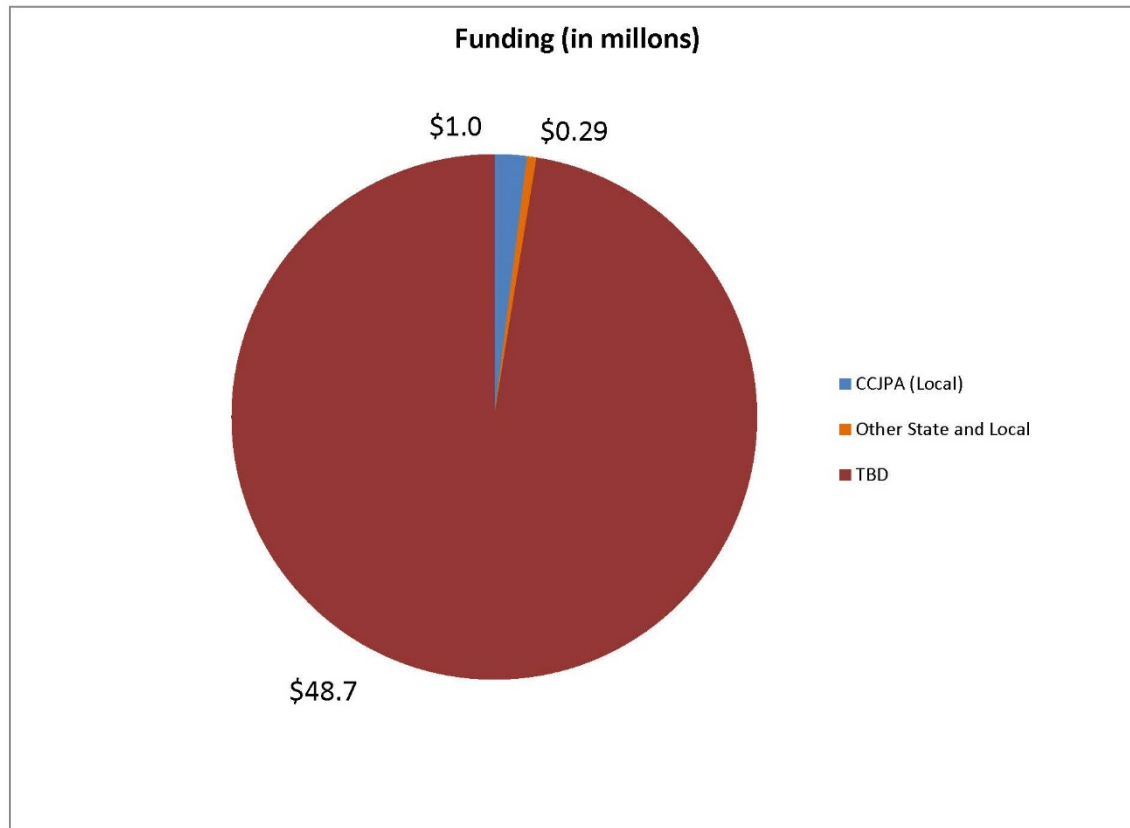


Environmental Process





Project Funding



Environmental Review Process

- National Environmental Policy Act (NEPA)
 - Federal Transit Administration is the lead agency
- California Environmental Quality Act (CEQA)
 - Peninsula Corridor Joint Powers Board / Caltrain Lead Agency
- Includes analysis of existing conditions and potential impacts (short-term and long-term) and strategies to address the impacts

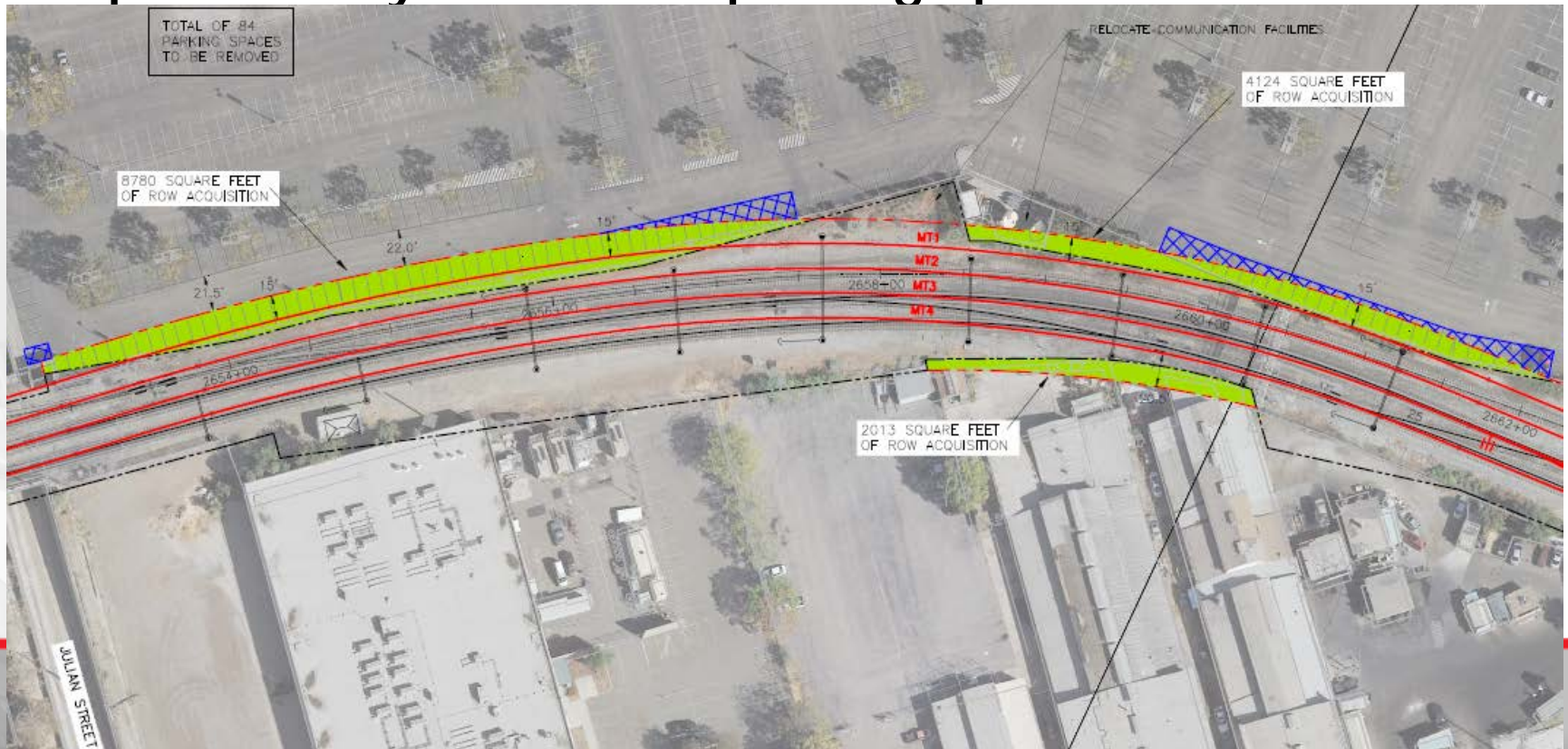
Environmental Setting

- The project area is entirely urbanized, consisting of an active railroad corridor surrounded by lands that are currently developed at a high density with industrial and commercial uses.
- There are no waterbodies, wetlands or sensitive habitats present within the project limits.



Right-of-Way Requirements

- Right-of-way acquisition includes 84 SAP Center parking spaces. Mitigate by restriping parking lot to prevent any net loss of parking spaces.



Potential Impacts and Mitigation

- Project will acquire land from known contaminated site - SAP Center.
- Coordination with California Department of Toxic Substances Control regarding construction within parking lot.
- Caltrain to implement Site-specific Soil Management Plan and Health and Safety Plan to protect workers and public.

Potential Impacts and Mitigation

- Temporary construction noise
 - Minimal impact due to industrial/commercial land uses adjacent to tracks
 - Implement community outreach program
- Cultural resources
 - No adverse effect on Diridon Station Historic District.
 - Archaeological monitoring during excavation due to sensitivity for historic-era archaeological resources.
 - Project area not sensitive for Native American resources; however outreach will be conducted as part of Section 106



Project Construction



Construction Schedule

- Two year construction project starting in fall 2018
- Staging designed to avoid impact to existing operations
- Majority of work necessary during the evening, at night or on weekends to avoid disruption of train operations.
- JPB will notify community well in advance of any night time activities.



Project Benefits



Project Benefits

- Increase operational flexibility = less train delays and improved service reliability
- Eliminate conflicts between in-service and out-of-service trains destined to/from CEMOF
- Address operational bottleneck north of Diridon that will be worsened in the future by increases in train service by Caltrain Electrification, ACE, UPRR etc.



Community Outreach





Public Review Period

Draft Initial Study and Mitigated Negative Declaration
available for review

- Download from www.caltrain.com/stp2
- Hard copy available at Santa Clara County Clerk's office:
 - 70 West Hedding St, E.Wing, 1st Flr
- Email stp2@caltrain.com

Comment period: April 11, 2016 to May 10, 2016

Submit comments to Hilda Lafebre, Caltrain:

- Postal Mail: P.O. Box 3006, San Carlos, CA 94070-1306
- Email: stp2@caltrain.com

Public Outreach and Engagement

- Dedicated Web page: www.caltrain.com/stp2
- Construction Outreach Hotline: 650.508.7726
- Post card mailing to project area and newspaper notices
- Regular Updates and Public Meetings
 - Pre-construction and during construction
 - Tied to critical milestones/project decisions
 - Mail/Email/Website
 - Outreach to community organizations



Questions

