

STANFORD

WATER POLO

Stanford Athletic Communications
 John Cantalupi • Assistant Director
 Cell: 650.924.8304
 johncan@stanford.edu

vs. UCLA and CSU Bakersfield • April 11 and 12 • Stanford, Calif.

RESULTS

overall	18-1
MPSF	3-0
home	9-0
away	2-0
neutral	6-1

SCHEDULE

January

LouStrong Memorial (San Jose, Calif.)

16	People's Republic of China (Ex.)	W, 10-6
16	Brazil (Ex.)	W, 13-6
17	vs. Pacific	W, 14-3
17	vs. Cal State Monterey Bay	W, 20-0

Stanford Invitational (Stanford, Calif.)

31	#18 UC Davis	W, 16-4
31	#6 UC Irvine	W, 11-3

February

Stanford Invitational (Stanford, Calif.)

1	#7 San Jose State	W, 11-8
1	#2 UCLA	W, 10-6

FPU Mini Tournament (Fresno, Calif.)

14	vs. #12 San Diego State	W, 18-6
14	at Fresno Pacific	W, 20-1

UCI Invitational (Irvine, Calif.)

21	vs. #19 Pacific	W, 13-3
21	vs. #9 CSUN	W, 16-3
22	vs. #4 California	W, 7-6
22	vs. #2 UCLA	L, 7-6 [OT]

26	#20 Santa Clara (P12N)	W, 17-4
26	Sonoma State	W, 16-3

March

8	at #3 USC * (P12N)	W, 12-9 [OT]
20	Harvard	W, 23-7
28	at #8 Arizona State *	W, 10-4
29	#11 UC Davis	W, 14-3

April

4	#9 San Jose State *	W, 23-6
11	#1 UCLA *	noon
12	CSU Bakersfield *	noon
16	at California * (P12N)	5 p.m.

MPSF Tournament (Tempe, Ariz.)

24	TBD	TBD
25	TBD	TBD
26	TBD	TBD

May

NCAA Championships (Stanford, Calif.)

8	TBD	TBD
9	TBD	TBD
10	TBD	TBD

* - MPSF game; All times Pacific and subject to change; Home games in Bold; P12N - Game televised on Pac-12 Networks

WHAT'S AHEAD?: No. 2 Stanford (18-1, 3-0 MPSF) closes out its regular-season home schedule with a pair of weekend league matches against No. 1 UCLA (20-1, 4-0 MPSF) and CSU Bakersfield (12-13, 0-4 MPSF). The ball drops in the Cardinal's showdown with the Bruins at noon on Saturday, April 11. Stanford meets the Roadrunners on Sunday, April 12 at the same time. The Cardinal and UCLA have split their meetings this year, with Stanford winning 10-6 in the championship game of the Stanford Invitational on Feb. 1 and the Bruins coming out on top in overtime, 7-6, in the championship match of the UC Irvine Invitational on Feb. 22.

LAST TIME OUT: Five Cardinal delivered hat tricks in a 23-6 MPSF home victory over San Jose State last Saturday. The balanced effort saw hat tricks turned by Ashley Grossman, Jamie Neushul, Kiley Neushul, Gurpreet Sohi and Maggie Steffens. It was Grossman's seventh of the season, Jamie Neushul's second, Kiley Neushul's eighth, Sohi's second and Steffens' fifth.

NEWCOMER OF THE WEEK: For the third time this season, Stanford freshman Jordan Raney was named MPSF/Kap7 Newcomer of the Week when the conference announced its weekly honors on Tuesday. The Manhattan Beach, Calif. native's three MPSF Newcomer of the Week nods are tops in the league this season. Raney posted one of Stanford's eight multi-goal efforts in its win over the Spartans. It was the fourth time she has put home two in a game this season and first in MPSF action. Her 16 goals are ninth on a Stanford squad which is averaging 14.58 per game.

MPSF PICK: Stanford collected the maximum possible 36 points and six first-place votes to top the 2015 MPSF Women's Water Polo Coaches' Poll. UCLA was tabbed second with 31 points and secured the only other first-place vote while USC garnered 26 points and was selected third. California, Arizona State, San Jose State and CSU Bakersfield rounded out the preseason picks. The Cardinal, which finished 25-1 overall last season and 6-0 in league play, has not lost an MPSF game since 2009, a stretch of 36 regular-season conference outings. Its last league loss came at USC on April 18, 2009 (11-6).

SEEING THE STATS: Stanford finds itself second in the MPSF in goals per game (14.58) behind USC (17.41) and third in goals allowed per game (4.44), trailing the Trojans (4.36) and UCLA (4.38). Individually, Kiley Neushul's 44 goals place her fifth in goals per game (2.32). Ashley Grossman is sixth (2.26) and Maggie Steffens is 13th (1.84). Gabby Stone's 4.73 goals against average is third in the conference and her 8.15 saves per game are fifth.

DEFENSE WINS CHAMPIONSHIPS: The Cardinal's defense has been a constant ingredient in its success. Dating back to last year, Stanford has held its opponents under 10 goals in 36 consecutive games. The team has limited 11 of its 19 foes to four goals or less this season. Stanford is currently allowing 4.53 goals per game, which would be its best mark since 2007 (4.41). The Cardinal has led the MPSF in goals allowed per game four out of the past five years.

OFFENSIVE ONSLAUGHT: Stanford's output against San Jose State was its fourth time this season firing home 20 or more goals, the program's most since it did so five times in 1997 in what was its second year of varsity status.

HC JOHN TANNER

Year	Record	NCAA
1998	29-6	Third
1999	25-6	Second
2000	28-5	Third
2001	27-1	Second
2002	23-2	CHAMPIONS
2003	21-3	Second
2004	19-5	Third
2005	21-7	Second
2006	24-5	Third
2007	27-3	Second
2008	27-5	Third
2009	26-4	Third
2010	26-3	Second
2011	28-1	CHAMPIONS
2012	26-2	CHAMPIONS
2013	29-3	Second
2014	25-1	CHAMPIONS
2015	18-1	
Overall	449-63	.877

NATIONAL POLL (APRIL 8)

Rank	School	Previous	Points
1	UCLA	1	100
2	Stanford	2	95
3	USC	3	90
4	California	4	85
5	UC Irvine	5	80
6	Hawaii	6	75
7	Arizona State	7	70
8	San Jose State	9	61
9	CSUN	8	60
10	Princeton	10	57
11	UC Davis	11	54
12	Long Beach State	12	46
13	UC Santa Barbara	14	32
14	Pacific	15	31
15	Michigan	17	30
16	Indiana	13	28
17	Loyola Marymount	16	21
18	San Diego State	18	17
19	Wagner	19	12
20 (T)	Harvard	20	4
20 (T)	UC San Diego	RV	4



STANFORD QUICK FACTS

Location Stanford, Calif.
 Founded 1891
 Enrollment 15,877 (6,980 undergraduate)
 Colors Cardinal and White
 Affiliation NCAA Division I
 Conference Pac-12 Conference
 President John Hennessy
 Athletic Director Bernard Muir
 Water Polo Administrator Earl Koberlein
 Athletic Department Phone (650) 723-4591
 Ticket Office Phone (800) STANFORD
 Home Pool Avery Aquatic Center
 Capacity 2,530

COACHING STAFF

Head Coach John Tanner (18th season)
 Alma Mater Stanford '82
 Record at Stanford 449-63
 Career Record same
 Assistant Coach Susan Ortwein (18th season)
 Alma Mater UC Santa Barbara '90
 Assistant Coach Kyle Utsumi (eighth season)
 Alma Mater Stanford '95

TEAM INFORMATION

2014 Overall Record 25-1
 Home 6-0
 Away 10-0
 Neutral 9-1
 2014 MPSF Record 6-0 (1st)
 Letterwinners Returning/Lost 13/7
 Newcomers 5

WOMEN'S WATER POLO HISTORY

First Year 1996
 All-Time Record 513-82 (.862)
 NCAA Tournament Appearances 14
 NCAA Championships 4
 (2002, 2011, 2012, 2014)

ATHLETIC COMMUNICATIONS

Senior Assistant Athletic Director .. Kurt Svoboda
 Phone (650) 223-5809
 E-Mail kurt1@stanford.edu
 Assistant Director/Water Polo John Cantalupi
 Cell Phone (650) 924-8304
 E-Mail johncan@stanford.edu
 Website www.gostanford.com
 SID Office Address 641 E. Campus Drive
 Stanford, CA 94305

2014-15 INDIVIDUAL ACCOLADES

MPSF Player of the Week
 Gabby Stone (Feb. 3)
 Jamie Neushul (March 10)
 Kiley Neushul (March 31)
MPSF Newcomer of the Week
 Katie Dudley (Feb. 3)
 Jordan Raney (Feb. 24)
 Jordan Raney (March 10)
 Katie Dudley (March 24)
 Jordan Raney (April 7)

Entering this year, the Cardinal had reached that mark in a single game 11 times in the past 16 seasons. Stanford, which is currently scoring 14.58 goals per game, has never averaged more than 14 through an entire season. Last year's 13.31 clip was a school record.

AT AVERY: Stanford is 76-4 at home since 2008 and currently in the midst of a 24-game winning streak at Avery Aquatic Center. Its last setback at the iconic venue came to UCLA, 8-7, in the 2012 MPSF Tournament Championship (April 29).

PLAYING HOST: For the third time, Stanford will host the National Collegiate Women's Water Polo Championships from May 8-10, 2015 at Avery Aquatic Center. The Cardinal also hosted in 2004 when USC claimed the title and 2008 when UCLA took home the crown. Stanford will be looking to break a streak that has yet to see a host win the NCAA Championship since the tournament began in 2001.

APPROACHING MARKS: Stanford boasts four 100-goal scorers in Kiley Neushul (203), Ashley Grossman (158), Maggie Steffens (146) and Anna Yelizarova (102). Neushul is currently fourth in Cardinal history behind Melissa Seidemann (239), Lauren Silver (239) and Ellen Estes (214), while Grossman is 10th and Steffens is 11th. Next up for those two is Kelly Eaton (171).

THE STANDARD: The Cardinal's win over San Jose State on Feb. 1 was the 500th in the history of the women's water polo program and Stanford is now 513-82 (.862) all-time. Stanford, which was 108-7 during its recent run of national championships, has won at least 25 games each of the last eight seasons and has finished among the nation's top three each and every season under John Tanner. The team is the only one that has made the NCAA's every year since 2001.

BEST IN THE WORLD: In early December, junior Maggie Steffens was named the FINA Women's Water Polo Athlete of the Year for the second time. The American beat out five other finalists in Kami Craig (USA), Maica Garcia (ESP), Giulia Gorlero (ITA), Rita Keszthelyi (HUN), and Rowie Webster (AUS). The science, technology and society major delivered 12 goals helping Team USA earn a second consecutive FINA World Cup crown in 2014. She was second on the team in scoring with 11 goals in a gold medal effort at the 2014 FINA World League Super Final. Steffens is the first female two-time winner of the award, which was inaugurated in 2010. She was also named the FINA Women's Water Polo Athlete of the Year in 2012 before making her collegiate debut with the Cardinal.

IN THE POLLS: Stanford maintained its No. 2 spot in the national rankings (95 points), behind No. 1 UCLA (100 points) in this week's CWPA Women's Varsity Top 20 Poll. USC (90 points) California (85 points) and UC Irvine (80 points) round out the top five.

STREAKING: Stanford's 7-6 overtime loss to UCLA on Feb. 22 snapped the Cardinal's 27-game winning streak dating back to 2014 and was the program's first setback since it fell to the same Bruins (9-6) in Irvine on Feb. 23, 2014. The winning streak was the Cardinal's longest since the program won 28 straight 14 years ago, its final game of 2000 and the first 27 of 2001. Stanford has only lost twice in its past 45, with both coming at the hands of UCLA.

2015 STANFORD ROSTER

NO.	NAME	POSITION	HT.	YR.	HOMETOWN (HIGH SCHOOL)
1	Emily Dorst	GK	5-11	Sr.	Menlo Park, Calif. (Menlo-Atherton)
1	Julia Hermann	GK	5-9	So.	Solana Beach, Calif. (Torrey Pines)
1	Gabby Stone	GK	6-0	Jr.	La Jolla, Calif. (The Bishop's School)
2	Dani Jackovich	2M	6-0	So.	New Lenox, Ill. (Lincoln-Way Central)
3	Lauren Norheim	2MD	6-0	Fr.	Mission Viejo, Calif. (El Toro)
4	Katie Dudley	2M	6-1	Fr.	Okemos, Mich. (Okemos)
5	Gurpreet Sohi	Driver	5-6	Jr.	Delta, British Columbia (Seaquam Secondary School)
6	Ashley Grossman	2M	5-11	Sr.	Santa Monica, Calif. (Harvard-Westlake)
7	Jordan Raney	2MD	5-10	Fr.	Manhattan Beach, Calif. (Mira Costa)
8	Jamie Neushul	Driver	5-7	So.	Goleta, Calif. (Dos Pueblos)
9	Maggie Steffens	Driver	5-9	Jr.	Danville, Calif. (Monte Vista)
10	Kiley Neushul	Driver	5-8	Sr.	Goleta, Calif. (Dos Pueblos)
11	Anna Yelizarova	2MD	5-10	Jr.	La Salle, Quebec (Vanier College)
12	Shannon Cleary	Driver	6-0	Fr.	Goleta, Calif. (Dos Pueblos)
14	Cassidy Papa	Driver	5-8	So.	Newport Beach, Calif. (Corona del Mar)
15	Sophia Monaghan	2MD	5-9	So.	Princeton, N.J. (The Lawrenceville School)
16	Rachel Johnson	Driver	5-6	Jr.	Davis, Calif. (Davis)
18	Natalie Chun	Driver	5-11	Fr.	La Jolla, Calif. (The Bishop's School)
	Jessica Webster	Driver	5-10	So.	La Jolla, Calif. (The Bishop's School)

Head Coach: John Tanner (Stanford '82), 18th year
Assistant Coach: Susan Ortwein (UC Santa Barbara '90), 18th year
Volunteer Assistant Coach: Kyle Utsumi (Stanford '95), eighth year



2015 STANFORD STATISTICS RECORD: 18-1, MPSF: 3-0, HOME: 9-0, ROAD: 3-0, NEUTRAL: 6-1

Date	Opponent	W/L	Score	Overall	MPSF	Stanford Scorers	Saves
Jan. 17	vs. Pacific ¹	W	14-3	1-0	0-0	K. Neushul 3, Steffens 2, Yelizarova 2, Chun, Dudley, Grossman, J. Neushul, Papa, Raney, Sohi	Stone 9
Jan. 17	vs. CSU Monterey Bay ¹	W	20-0	2-0	0-0	Jackovich 3, Yelizarova 3, Dudley 2, Grossman 2, K. Neushul 2, Sohi 2, Steffens 2, Chun, Cleary, Monaghan, Raney	Dorst 8
Jan. 31	UC Davis ²	W	16-4	3-0	0-0	Grossman 5, K. Neushul 4, J. Neushul 2, Steffens 2, Dudley, Monaghan, Yelizarova	Dorst 7 Stone 1
Jan. 31	UC Irvine ²	W	11-3	4-0	0-0	Yelizarova 3, Jackovich 2, K. Neushul 2, Cleary, Dudley, Grossman, Sohi	Stone 10
Feb. 1	San Jose State ²	W	11-8	5-0	0-0	J. Neushul 2, Steffens 2, Dudley, Grossman, Jackovich, Johnson, K. Neushul, Raney, Yelizarova	Stone 6
Feb. 1	UCLA ²	W	10-6	6-0	0-0	Yelizarova 3, Grossman 2, Jackovich, Johnson, K. Neushul, Sohi, Steffens	Stone 10
Feb. 14	vs. San Diego State ³	W	18-6	7-0	0-0	Grossman 6, K. Neushul 4, Jackovich 2, Dudley, Johnson, Norheim, J. Neushul, Sohi, Steffens	Stone 8 Dorst 1
Feb. 14	at Fresno Pacific ³	W	20-1	8-0	0-0	Sohi 4, Johnson 3, Steffens 3, Cleary 2, Grossman 2, Dudley, Jackovich, J. Neushul, K. Neushul, Papa, Monaghan	Dorst 8
Feb. 21	vs. Pacific ⁴	W	13-3	9-0	0-0	Steffens 3, Grossman 2, Jackovich 2, K. Neushul 2, Raney 2, Sohi 2	Dorst 9 Stone 3
Feb. 21	vs. CSUN ⁴	W	16-3	10-0	0-0	Grossman 3, K. Neushul 3, Dudley 2, Steffens 2, Cleary, Johnson, J. Neushul, Papa, Raney, Sohi,	Stone 7 Dorst 1
Feb. 22	vs. California ⁴	W	7-6	11-0	0-0	Steffens 3, J. Neushul 2, K. Neushul, Raney	Stone 10
Feb. 22	vs. UCLA ⁴	L	7-6 [OT]	11-1	0-0	K. Neushul 2, Steffens 2, J. Neushul, Raney	Stone 7
Feb. 26	Santa Clara	W	17-4	12-1	0-0	Grossman 3, K. Neushul 3, Jackovich 2, Raney 2, Sohi 2, Dudley, Johnson, Monaghan, J. Neushul, Steffens	Stone 2 Dorst 1
Feb. 26	Sonoma State	W	16-3	13-1	0-0	Jackovich 3, Dudley 2, Grossman, J. Neushul 2, K. Neushul 2, Raney 2, Cleary, Chun, Johnson, Steffens	Dorst 9
Mar. 8	at USC [*]	W	12-9 [OT]	14-1	1-0	J. Neushul 3, Grossman 2, K. Neushul 2, Steffens 2, Dudley, Raney, Sohi	Stone 9
Mar. 20	Harvard	W	23-7	15-1	1-0	Grossman 5, Steffens 5, Jackovich 4, Dudley 2, J. Neushul 2, K. Neushul 2, Sohi 2, Monaghan	Stone 6 Dorst 1
Mar. 28	at Arizona State [*]	W	10-4	16-1	2-0	K. Neushul 3, Sohi 2, Yelizarova 2, Grossman, J. Neushul, Raney	Stone 4
Mar. 29	UC Davis	W	14-3	17-1	2-0	Grossman 3, Jackovich 3, K. Neushul 3, Cleary, Dudley, Papa, Sohi, Yelizarova	Stone 15
Apr. 4	San Jose State [*]	W	23-6	18-1	3-0	Grossman 3, J. Neushul 3, K. Neushul 3, Sohi 3, Steffens 3, Johnson 2, Raney 2, Yelizarova 2, Dudley, Jackovich	Stone 5 Dorst 1
Apr. 11	UCLA [*]						
Apr. 12	CSU Bakersfield [*]						
Apr. 16	at California [*]						
Apr. 24	MPSF ⁵						
Apr. 25	MPSF ⁵						
Apr. 26	MPSF ⁵						
May 8	NCAA ⁶						
May 9	NCAA ⁶						
May 10	NCAA ⁶						

Key: 1 - LouStrong Memorial (hosted by San Jose State); 2 - Stanford Invitational (hosted by Stanford); 3 - FPU Mini Tournament (hosted by Fresno Pacific); 4 - UCI Invitational (hosted by UC Irvine); 5 - MPSF Tournament (hosted by Arizona State); 6 - NCAA Tournament (hosted by Stanford); * MPSF contest



INDIVIDUAL SCORING

Player	Goals	Player	Goals	Player	Goals
Kiley Neushul	44	Katie Dudley	18	Cassidy Papa	4
Ashley Grossman	43	Anna Yelizarova	18	Natalie Chun	3
Maggie Steffens	35	Jordan Raney	16	Lauren Norheim	1
Dani Jackovich	25	Rachel Johnson	11	TOTALS	277
Gurpreet Sohi	24	Shannon Cleary	7		
Jamie Neushul	23	Sophia Monaghan	5		

GOALKEEPER TOTALS

Name	Saves	Games	Saves/Game	Quarters Played	Goals Against	GAA *
Gabby Stone	112	13.74	8.15	54.95	65	4.73
Emily Dorst	46	5.64	8.16	22.55	21	3.73
Julia Hermann	-	-	-	-	-	-
TOTALS	158	19.38	8.15	77.50	86	4.44

* To calculate goals against average, divide the goals allowed by the number of quarters played, take that figure and multiply by four (GAA = [GA/QP] x 4)

SCORE BY QUARTER

	1	2	3	4	OT	OT	SD	FINAL
Stanford	80	60	82	51	3	1	-	277
Opponents	20	18	24	22	1	1	-	86

SEASON HIGHS

No.	Name	Goals	Date
2	Dani Jackovich	4	vs. Harvard (3/20)
3	Lauren Norheim	1	vs. San Diego State (2/14)
4	Katie Dudley	2	4x, last vs. Harvard (3/20)
5	Gurpreet Sohi	4	vs. Fresno Pacific (2/14)
6	Ashley Grossman	6	vs. San Diego State (2/14)
7	Jordan Raney	2	4x, last vs. San Jose State (4/4)
8	Jamie Neushul	3	2x, last vs. San Jose State (4/4)
9	Maggie Steffens	5	vs. Harvard (3/20)
10	Kiley Neushul	4	2x, last vs. San Diego State (2/14)
11	Anna Yelizarova	3	3x, last vs. UCLA (2/1)
12	Shannon Cleary	2	vs. Fresno Pacific (2/14)
14	Cassidy Papa	1	4x, last vs. UC Davis (3/29)
15	Sophia Monaghan	1	5x, last vs. Harvard (3/20)
16	Rachel Johnson	3	vs. Fresno Pacific (2/14)
18	Natalie Chun	1	3x, last vs. Sonoma State (2/26)

Goalkeeper	Saves	Date
1 Gabby Stone	15	vs. UC Davis (3/29)
1A Emily Dorst	9	2x, last vs. Sonoma State (2/26)
1B Julia Hermann	-	-

ACTIVE LEADERS

Goals	
1. Kiley Neushul (2012-pres.)	203
2. Ashley Grossman (2012-pres.)	158
3. Maggie Steffens (2013-pres.)	146
4. Anna Yelizarova (2013-pres.)	102
5. Gurpreet Sohi (2013-pres.)	47
6. Jamie Neushul (2014-pres.)	43
7. Dani Jackovich (2014-pres.)	42
8. Katie Dudley (2015-pres.)	18
9. Rachel Johnson (2013-pres.)	16
9. Jordan Raney (2015-pres.)	16

Saves	
1. Gabby Stone (2013-pres.)	339
2. Emily Dorst (2012-pres.)	159
3. Julia Hermann (2014-pres.)	12

MULTI-GOAL GAMES

Name	Games Scored In	Multi-Goal Games	Goals
Kiley Neushul	19	15	44
Ashley Grossman	17	12	43
Maggie Steffens	16	12	35
Dani Jackovich	12	8	25
Gurpreet Sohi	14	7	24
Jamie Neushul	14	7	23
Katie Dudley	14	4	18
Anna Yelizarova	9	6	18
Jordan Raney	12	4	16
Rachel Johnson	8	2	11
Shannon Cleary	6	1	7
Sophia Monaghan	5	0	5
Cassidy Papa	4	0	4
Natalie Chun	3	0	3
Lauren Norheim	1	0	1

ALL-TIME RECORDS

Career Goals

1. Melissa Seidemann (2009-11, 13)	239
1. Lauren Silver (2006-09)	239
3. Ellen Estes (1997-98, 2001-02)	214
4. Kiley Neushul (2012-pres.)	203
5. Margie Dingeldein (1999-2002)	187
6. Annika Dries (2010-11, 13-14)	183
7. Katie Hansen (2004-07)	178
8. Brenda Villa (2001-03)	173
9. Kelly Eaton (2007-10)	171
10. Ashley Grossman (2012-pres.)	158
11. Maggie Steffens (2013-pres.)	146
12. Julie Gardner (2000-03)	140

Single-Season Goals

1. Ellen Estes (1998)	93
2. Melissa Seidemann (2013)	75
3. Lauren Silver (2008)	71
4. Annika Dries (2011)	65
5. Katie Hansen (2007)	64
5. Lauren Silver (2007)	64
7. Suze Gardner (1997)	63
8. Maggie Steffens (2013)	60
8. Brenda Villa (2002)	60
10. Margie Dingeldein (2000)	59
10. Melissa Seidemann (2009)	59



GAME-BY-GAME STATISTICS

SCORING

SAVES

DATE	OPPONENT	2 DJ	3 LN	4 KD	5 GS	6 AG	7 JR	8 JN	9 MS	10 KN	11 AY	12 SC	14 CP	15 SM	16 RJ	18 NC	TOTAL	1 GS	1A ED	1B JH	TOTAL
1/17	vs. Pacific			1	1	1	1	1	2	3	2		1			1	14	9			9
1/17	vs. CSU Monterey Bay	3		2	2	2	1		2	2	3	1		1		1	20		8		8
1/31	UC Davis			1		5		2	2	4	1			1			16	1	7		8
1/31	UC Irvine	2		1	1	1				2	3	1					11	10			10
2/1	San Jose State	1		1		1	1	2	2	1	1				1		11	6			6
2/1	UCLA	1			1	2			1	1	3				1		10	10			10
2/14	vs. San Diego State	2	1	1	1	6		1	1	4					1		18	8	1		9
2/14	at Fresno Pacific	1		1	4	2		1	3	1		2	1	1	3		20		8		8
2/21	vs. Pacific	2			2	2	2		3	2							13	3	9		12
2/21	vs. CSUN			2	1	3	1	1	2	3		1	1		1		16	7	1		8
2/22	vs. California						1	2	3	1							7	10			10
2/22	vs. UCLA						1	1	2	2							6	7			7
2/26	Santa Clara	2		1	2	3	2	1	1	3				1	1		17	2	1		3
2/26	Sonoma State	3		2		1	2	2	1	2		1			1	1	16		9		9
3/8	at USC *			1	1	2	1	3	2	2							12	9			9
3/20	Harvard	4		2	2	5		2	5	2				1			23	6	1		7
3/28	at Arizona State *				2	1	1	1		3	2						10	4			4
3/29	UC Davis	3		1	1	3				3	1	1	1				14	15			15
4/4	San Jose State *	1		1	3	3	2	3	3	3	2				2		23	5	1		6
4/11	UCLA *																				
4/12	CSU Bakersfield *																				
4/16	at California *																				
4/24	MPSF																				
4/25	MPSF																				
4/26	MPSF																				
5/8	NCAA																				
5/9	NCAA																				
5/10	NCAA																				
	TOTALS	25	1	18	24	43	16	23	35	44	18	7	4	5	11	3	277	112	46		158



TV/RADIO ROSTER



#1 • EMILY DORST
GK • 5-11 • SR
MENLO PARK, CALIF.
MENLO-ATHERTON



#1 • JULIA HERMANN
GK • 5-9 • SO
SOLANA BEACH, CALIF.
TORREY PINES



#1 • GABBY STONE
GK • 6-0 • JR
LA JOLLA, CALIF.
THE BISHOP'S SCHOOL



#2 • DANI JACKOVICH
2M • 6-0 • SO
NEW LENOX, ILL.
LINCOLN-WAY CENTRAL



#3 • LAUREN NORHEIM
2MD • 6-0 • FR
MISSION VIEJO, CALIF.
EL TORO



#4 • KATIE DUDLEY
2M • 6-1 • FR
OKEMOS, MICH.
OKEMOS



#5 • GURPREET SOHI
DRIVER • 5-6 • JR
DELTA, BRITISH COLUMBIA
SEAQUAM SECONDARY SCHOOL



#6 • ASHLEY GROSSMAN
2M • 5-11 • SR
SANTA MONICA, CALIF.
HARVARD-WESTLAKE



#7 • JORDAN RANEY
2MD • 5-10 • FR
MANHATTAN BEACH, CALIF.
MIRA COSTA



#8 • JAMIE NEUSHUL
DRIVER • 5-7 • SO
GOLETA, CALIF.
DOS PUEBLOS



#9 • MAGGIE STEFFENS
DRIVER • 5-9 • JR
DANVILLE, CALIF.
MONTE VISTA



#10 • KILEY NEUSHUL
DRIVER • 5-8 • SR
GOLETA, CALIF.
DOS PUEBLOS



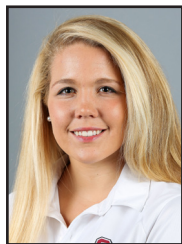
#11 • ANNA YELIZAROVA
2MD • 5-10 • JR
LA SALLE, QUEBEC
VANIER COLLEGE



#12 • SHANNON CLEARY
DRIVER • 6-0 • FR
GOLETA, CALIF.
DOS PUEBLOS



#14 • CASSIDY PAPA
DRIVER • 5-8 • SO
NEWPORT BEACH, CALIF.
CORONA DEL MAR



#15 • SOPHIA MONAGHAN
2MD • 5-9 • SO
PRINCETON, N.J.
THE LAWRENCEVILLE SCHOOL



#16 • RACHEL JOHNSON
DRIVER • 5-6 • JR
DAVIS, CALIF.
DAVIS



#18 • NATALIE CHUN
DRIVER • 5-11 • FR
LA JOLLA, CALIF.
THE BISHOP'S SCHOOL



JESSICA WEBSTER
DRIVER • 5-10 • SO
LA JOLLA, CALIF.
THE BISHOP'S SCHOOL

