

# Using a SWB Model to Analyze the Anthropogenic Effects on Groundwater Recharge in The Ballona Creek Watershed, Los Angeles County, CA

Research conducted at the Colorado School of Mines  
 Team members  
 REU-Chelsea Tarbell  
 Mentor- Kim Manago  
 Faculty Advisor- Terri Hogue

## Study Area

- Ballona Creek Watershed of Los Angeles, California (130 square miles)
- Highly developed

## Process

- Compile sets of tabular and gridded inputs (Fig. 1)
- Create a pre-development land cover shapefile (Fig. 2)
- Model pre/post-development land cover using a soil-water balance (SWB) model

## Goals

- Determine how highly altered land cover changes groundwater recharge rates
- Evaluate the effects of native vs. non-native vegetation
- Determine the variations on recharge and evapotranspiration (ET) rates between pre and post-development.

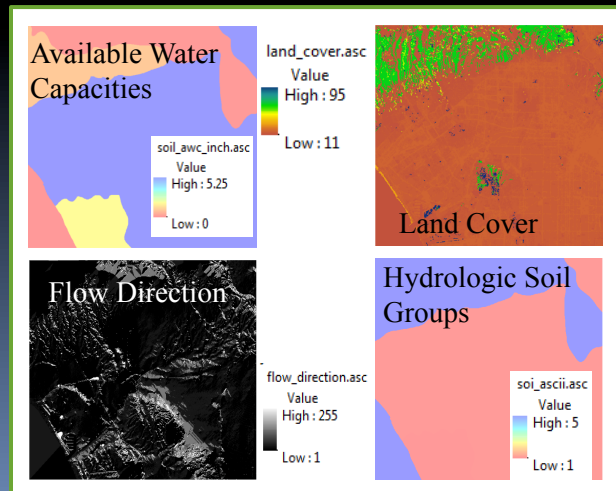
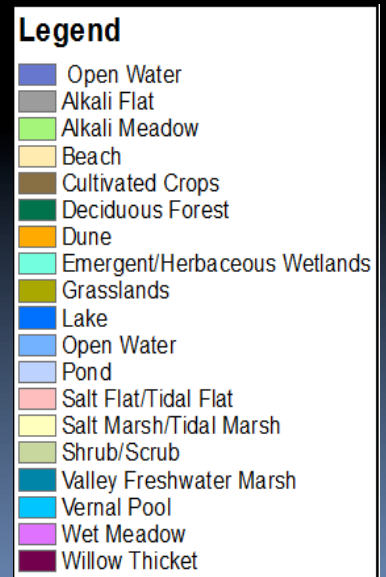
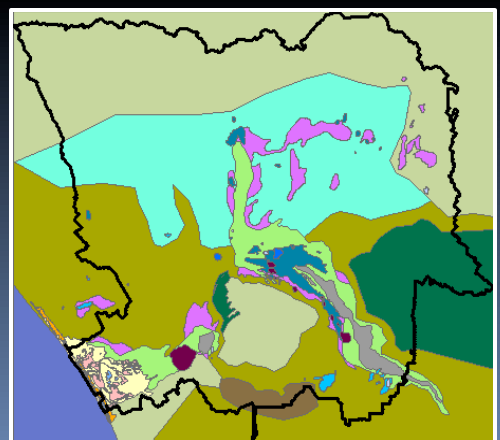


Fig. 1: Gridded inputs

Fig. 2: Pre-development land cover shapefile



## Outcomes

- Post-development outcomes show low recharge and ET rates in highly developed areas (Fig. 3A & 3B)

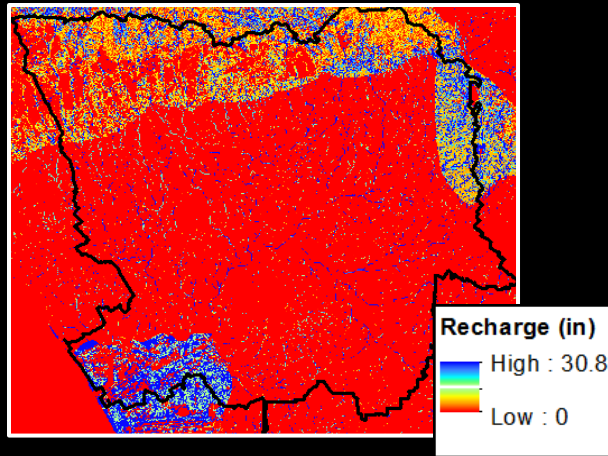


Fig. 3A

## Future Work

- Calibration, validation, and sensitivity analysis on the post-development model
- Running the pre-development model
- Comparative analysis of the two models

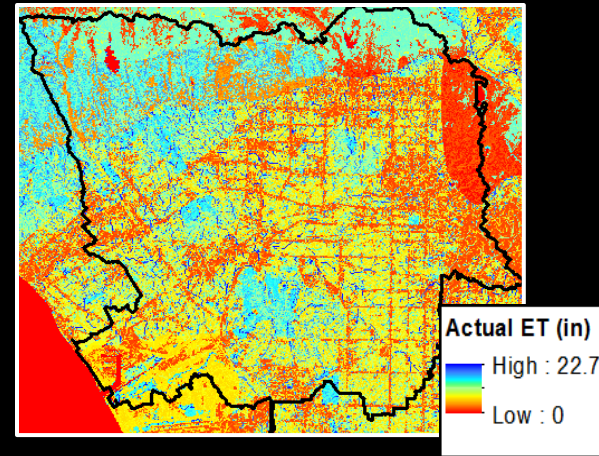


Fig. 3B

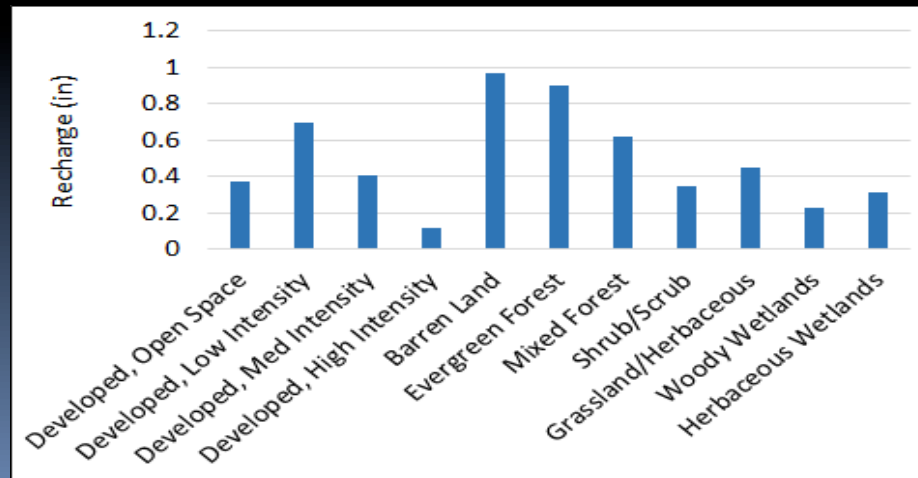


Fig. 4: Mean monthly recharge rates by land cover type