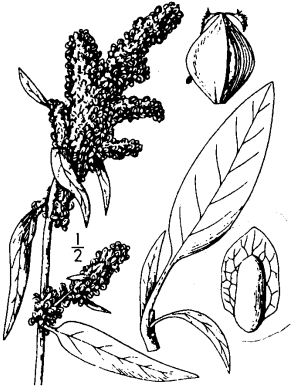




Rumex acetosella (sheep sorrel)



R. salicifolius var. transitorius (willow dock)



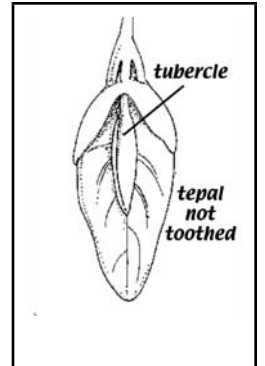
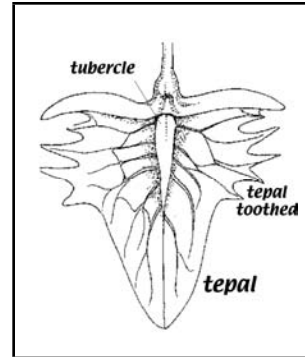
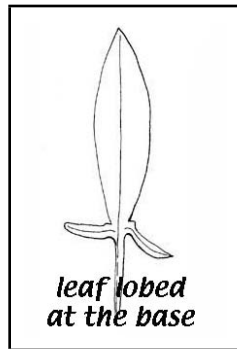
R. salicifolius var. salicifolius (willow-leaved dock)

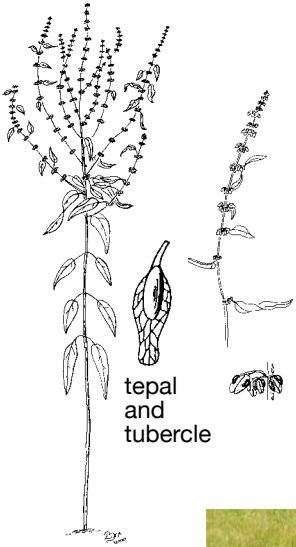


R. salicifolius var. crassus (willow dock)

KEY TO RUMEX (R) OF OUR AREA (SAN MATEO AND SANTA CLARA COUNTY)

- 1. Leaves lobed at the base.....R. acetosella (sheep sorrel)
- 1' Leaves not lobed at the base
 - 2. Margin of tepals not toothed
 - 3. Main stem mainly trailing along the ground; plants not developing a basal rosette of leaves (R. salicifolius group)
 - 4. Tubercles 3.....R. salicifolius var. transitorius (willow dock)
 - 4' Tubercle 1
 - 5. Inflorescence +/- open; leaves usually more than 3.5 times longer than wide, usually widest near middle or at leaf base.....
 -R. salicifolius var. salicifolius (willow-leaved dock)
 - 5' Inflorescence dense; leaves thick; usually not more than 3.5 times as long as wide, usually widest near the middle.....
 -R. salicifolius var. crassus (willow dock)
 - 3' Main stem upright; plants developing a basal rosette of leaves, although they may be withered when fruit mature
 - 4. Tubercles 0 or inconspicuous.....R. occidentalis (western dock)
 - 4' Tubercles 3 per flower, obvious
 - 6. Tapals usually 2 times as long as wide, narrowed from middle to base; largest tubercle almost as wide as inner tepal.....
 -R. conglomeratus (green dock)
 - 6' Tapals usually as long as wide, heart shaped; largest tubercles normally much narrower than inner tepals.....R. crispus (curly dock)
- 2' Margin of tepals toothed
 - 7. Tepals coming to a point at the base; teeth long to 4 mm, usually < 6; plants trailing along the ground.....R. maritimus (golden dock)
 - 7' Tepals not coming to a point at base; teeth > 6; plant upright
 - 8. Largest leaf > 20 cm; tepal segments toothed to middle.....
 -R. obtusifolius (bitter dock)
 - 8' Largest leaf to 20 cm; perianth segments toothed to below middle.....
 -R. pulcher (fiddle dock)

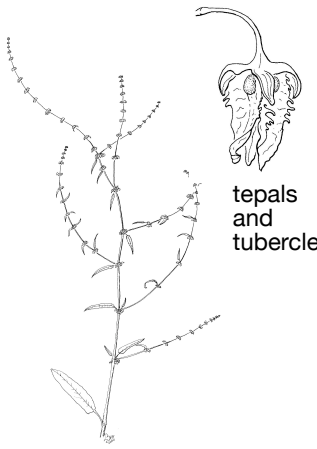




tepal and tubercle



R. conglomeratus (green dock)



tepals and tubercle

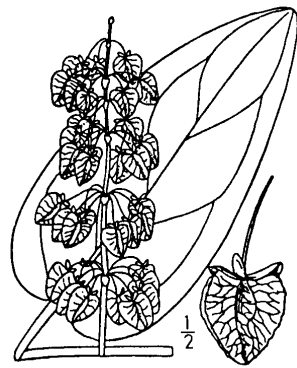


R. obtusifolius (bitter dock)



tepals and tubercle

R. crispus (curly dock)

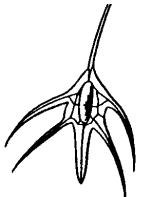


tepals without tubercles

R. occidentalis (western dock)



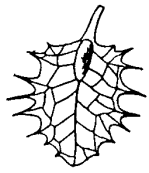
R. maritimus (golden dock)



tepal and tubercle



R. pulcher (fiddle dock)



tepal toothed to below middle

