

Benefits of PESP Membership...

Public Recognition

PESP publicly recognizes members who have demonstrated their commitment to environmental stewardship and made progress in reducing pesticide risk. Such recognition may include:

- An article in the monthly PESPWire e-bulletin, or the annual PESP Progress Report;
- A published success story;
- Coverage in press releases; or
- PESP awards.

Technology Transfer

- Workshops and symposia provide PESP members with a forum to address industry-specific challenges and solutions.
- Awards ceremonies provide PESP members with the opportunity to network.

Additional Benefits

- Use of the PESP logo.
- Assistance in tracking and learning about EPA actions regarding new materials.
- Support for members' existing outreach programs.
- Support for members' existing certification programs.
- Umbrella memberships for trade associations.



PESP Regional Grants

In addition to its partnership program, PESP provides funding to promote IPM and reduce pesticide risks. The program administers PESP Regional Grants to support sustainable IPM practices and pesticide risk reduction goals of PESP. Each year, PESP awards approximately \$500,000 in the form of 10 Regional Grants.



For more information on PESP, please visit:



www.epa.gov/pestwise/pepsp

PestWise

Pesticide Environmental Stewardship Program



Partnerships that reduce pesticide risk

Established in 1994, the U.S. Environmental Protection Agency's (EPA) Pesticide Environmental Stewardship Program (PESP) is a partnership program that works with the Nation's pesticide-user community to reduce human health and environmental risks of pesticide use and implement pollution prevention strategies. One of EPA's collaborative PestWise programs, PESP promotes the adoption of innovative, alternative pest control practices, such as Integrated Pest Management (IPM) and the use of biological pesticides, or 'biopesticides'. PESP is guided by the principle that—while government regulation can reduce pesticide risk—the informed actions of pesticide users can potentially reduce pesticide risk more efficiently and to a greater extent than can be achieved through regulatory mandates. Based on this principle, program membership and participation are completely voluntary.

Since its inception, PESP has been characterized by rapid growth, experimentation, and innovation. With PESP members engaging local communities in awareness-building and other informed practices, the program has evolved into a mature, established federal program. PESP is EPA's premier partnership program dedicated to reducing pesticide risk in both agricultural and non-agricultural settings.

PESP Membership

Who Can Join?

- Organizations that use pesticides,
- Organizations that represent pesticide users, and
- Organizations that have influence over the pest management practices of pesticide users.

PESP membership is divided into four groupings of members who share common pesticide interests, such as community IPM and sustainable agriculture. Although PESP members represent diverse segments of the pesticide-user community, they often share common pesticide challenges.

PESP—Where Do You Fit?

Where You Live

- Homes
- Apartment buildings
- Gardens
- Homeowner associations
- Local, state, and federal governments

Where You Work

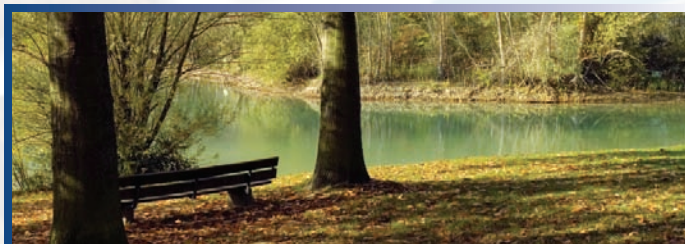
- Office buildings
- Industrial sites
- Schools
- Hospitals

Where You Play

- Golf courses
- Parks
- Sports venues
- Vacation and entertainment destinations

On the Farm

- Growers
- Grower associations
- Food processors
- Agricultural researchers



How Can I Join?

Joining PESP is easy! Potential members:

- Sign a statement pledging that environmental stewardship is an integral part of their pest management program and commit to working toward innovative practices that reduce risk to human health and the environment;
- Develop and submit a strategic approach to risk reduction and undertake specific, measurable activities toward achieving its risk reduction goals; and
- Submit a brief annual report describing outcomes and progress based on their strategy.

Benefits of PESP Membership

Joining PESP gives organizations an opportunity to demonstrate their commitment to environmental stewardship by taking steps to put this commitment into practice. PESP members can benefit from:

Improved Perception and Support

Membership can enhance public perception of participating organization and increase constituent support.

Technical Assistance

EPA provides each gold-level PESP member with a Liaison. Liaisons:

- Assist members transitioning from phased-out pesticides;
- Help members develop their five-year strategies;
- Provide information on EPA activities;
- Research where a product is in the registration cue; and
- Provide information on grant/funding opportunities to support strategy implementation.