



If you have any questions CALL  
US!

Thomas F. Gleave at (215) 814-  
2155 or [gleave.thomas@epa.gov](mailto:gleave.thomas@epa.gov)

\*\*\*

U.S. Environmental Protection  
Agency  
1650 Arch Street  
Philadelphia, Pennsylvania 19103

Do You Have a Chrome  
Electroplating or Chrome  
Anodizing Tank?

If you do,  
the U.S. EPA regulates it.



## Here's what you have to do:

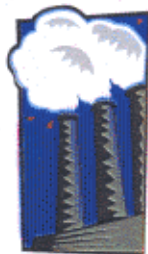
### Hard Chrome Tanks:

Install a pollution control device or system like such as a:

- Packed Bed Scrubber (*monitor inlet velocity pressure and pressure drop across scrubber daily*).
- Composite Mesh-pad System (*Monitor the pressure drop across the system daily*).
- Foam Blanket (*Monitor foam thickness hourly*).
- Fiber-bed Mist eliminator (*monitor pressure drop for eliminator and upstream control daily*).
- Wetting Agency-type Fume Suppressant (*monitor surface tension every 4 hours*).

Perform a stack test to determine your chrome emissions (*tell us when you intend to do this*).

- Emissions must be lower than .015 mg/per dry stan-



dard cubic meter (mg/dscm) if you are a large plater or a new source, or .03 mg/dscm if you are an existing small plater.

### Decorative Chrome Tanks Using Chromic Acid Baths/Chrome Anodizing Tanks:

- Emissions have to be lower than .01 mg/dscm **OR** use a Wetting Agent-type Fume Suppressant and keep the surface tension of the chrome bath below 45 dynes/cm.

Everyone must send their state or local environmental agency and EPA the following:

- Initial notification that tells us how many tanks you have, what you are doing (hard, decorative, or anodizing), and how you are controlling chrome emissions.
- A compliance status report that includes the results of your initial performance test.



Everyone must maintain records that include the following:

- O&M manuals;
- Breakdowns and repairs;
- Inspections of the equipment;
- When and how much fume suppressant you added;
- Excess emissions.

This pamphlet does not replace the existing regulation. There are additional requirements such as ongoing compliance status reports, that are in the regulation. For more information regarding these requirements please see:

40 CFR Part 63 Subpart N (National Emissions Standards for Chromium Emissions from Hard and Decorative Chromium Electroplating and Chromium Anodizing Tanks) or visit: <http://www.epa.gov/ttn/atw/chrome/chrome.html>