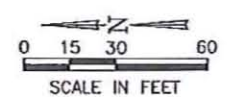


- CRANE MATS
- FIELD ID
- QUALITY ASSURANCE SAMPLE LOCATION
- APPROXIMATE BOUNDS OF TEMPORARY STAGING AREA ON MAYLINE PROPERTY
- NPAH DREDGE AREA
- BUTTRESS PILE LOCATION
- TEMPORARY WORK AREA FENCE
- WATERLOO BARRIER
- TEMPORARY SHEET PILE COFFERDAM
- AIR MONITORING STATION
- MONITORING WELL
- STAFF GAUGE
- TREES
- RIPRAP
- LIGHT POLE
- CLEANOUTS
- BENCHMARK
- CHAINLINK FENCE
- PRE-CONSTRUCTION ELEVATIONS, FEET (NAVD 88)
- RETAINING WALL
- UNDERGROUND UTILITY

- NOTES:**
- FIGURE REFERENCED TO SHEBOYGAN COUNTY COORDINATE SYSTEM
 - ELEVATIONS REFER TO NORTH AMERICAN VERTICAL DATUM OF 1988 (NAVD88).



- SOURCE NOTES:**
- PORTIONS OF THIS DRAWING SET WERE DEVELOPED FROM DRAWING FILE CAMP/PLANDIG DATED 1/4/00 OBTAINED FROM THE CITY OF SHEBOYGAN.
 - SURVEY OF WATERLOO BARRIER BY RETTLER CORPORATION, MARCH 2001, DIGITAL FILE TOPO022601.DWG.
 - PORTIONS OF THIS DRAWING SET WERE DEVELOPED FROM DRAWING FILE NRT-AER/PLNDIG E-MAILED 1/13/04 FROM THE CITY OF SHEBOYGAN.
 - MONITORING WELLS SURVEYED BY ROBERT E. LEE & ASSOCIATES SURVEYING, FEBRUARY 2004. SHEBOYGAN COUNTY COORDINATE SYSTEM AND NAVD88 VERTICAL DATUM.
 - UPLAND CONTOURS WERE CONVERTED FROM CITY OF SHEBOYGAN DATUM TO NAVD88 BY AN APPROXIMATE CONVERSION OF EL. 0' (CITY OF SHEBOYGAN DATUM) EQUALS EL. 581' (NAVD88).
 - AIR MONITORING STATION LOCATIONS SURVEYED BY NATURAL RESOURCE TECHNOLOGY, JUNE AND JULY 2011, 1655 110523.XLS AND 1655 110718.XLS.
 - SITE LAYOUT SURVEYED BY GREEN GLOBE ENVIRONMENTAL, INC., OCTOBER 2011, STABILIZATION PAD WITH NRT INITIAL SAMPLE LOCATIONS 2011.DWG.
 - COFFERDAM LAYOUT SURVEYED BY GREEN GLOBE ENVIRONMENTAL, INC., JULY-AUGUST 2011, PILING AND COFFERDAM INSTALLATION LOG 7-29-11.XLS.
 - BUTTRESS PILE LAYOUT SURVEYED BY GREEN GLOBE ENVIRONMENTAL, INC., JULY THROUGH AUGUST 2011, BUTTRESS INSTALLATION LOG 110831.XLS.
 - POST DREDGE QUALITY ASSURANCE SAMPLES SURVEYED BY GREEN GLOBE ENVIRONMENTAL, INC. AND NATURAL RESOURCE TECHNOLOGY, JULY - NOVEMBER 2011, 1655 POST DREDGE TSCA.XLSX AND 1655 POST DREDGE PHAS.XLSX.
 - PORTIONS OF THIS DRAWING WERE DEVELOPED FROM POLLUTION RISK SERVICES' 100% DESIGN, MARCH 2011 (DRAWINGS DATED NOVEMBER 2010) FOR SHEBOYGAN RIVER & HARBOR PROJECT. P&S DESIGN FOR PCB DREDGING IS SUBJECT TO CHANGE BASED ON THEIR PLANNED FURTHER CHARACTERIZATION.

6.			
5.			
4.			
3.			
2.			
1.			
0.	ISSUED FOR CONSTRUCTION COMPLETION REPORT	03/13/12	EJT
REVISION:		DATE:	APP'D BY:



PROJECT NO.
1665/15.8
DRAWN BY:
NWD 02/21/12
CHECKED BY:
KRM/EJT 02/21/12
APPROVED BY:
RHW 03/12/12

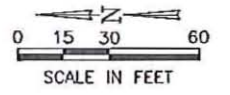
NORTH POST-DREDGE SAMPLE LOCATIONS
CONSTRUCTION COMPLETION REPORT
FOCUSED NAPL AND SEDIMENT REMOVAL ACTION
CAMPMARINA MGP RIVER OU
WISCONSIN PUBLIC SERVICE CORPORATION

FIGURE 5



	FIELD ID	QUALITY ASSURANCE SAMPLE LOCATION
	PAH DREDGE AREA	
	TEMPORARY WORK AREA FENCE	
	TEMPORARY SHEET PILE COFFERDAM	
	AIR MONITORING STATION	
	TREES	
	RIPRAP	
	LIGHT POLE	
	FIRE HYDRANT	
	CHAINLINK FENCE	
	PRE-CONSTRUCTION ELEVATIONS, FEET (NAVD 88)	
	RETAINING WALL	
	UNDERGROUND UTILITY	

- NOTES:
1. FIGURE REFERENCED TO SHEBOYGAN COUNTY COORDINATE SYSTEM.
 2. ELEVATIONS REFER TO NORTH AMERICAN VERTICAL DATUM OF 1988 (NAVD88).



SOURCE NOTES:

1. PORTIONS OF THIS DRAWING SET WERE DEVELOPED FROM DRAWING FILE CAMPPLANDWG DATED 1/4/00 OBTAINED FROM THE CITY OF SHEBOYGAN.
2. PORTIONS OF THIS DRAWING SET WERE DEVELOPED FROM DRAWING FILE NET-AERIAL.DWG E-MAILED 1/13/04 FROM THE CITY OF SHEBOYGAN.
3. MONITORING WELLS SURVEYED BY ROBERT E. LEE & ASSOCIATES SURVEYING, FEBRUARY 2004. SHEBOYGAN COUNTY COORDINATE SYSTEM AND NAVD88 VERTICAL DATUM.
4. LAND CONTOURS WERE CONVERTED FROM CITY OF SHEBOYGAN DATUM TO NAVD88 BY AN APPROXIMATE CONVERSION OF EL. 0' (CITY OF SHEBOYGAN DATUM) EQUALS EL. 581' (NAVD88).
5. AIR MONITORING STATION LOCATIONS SURVEYED BY NATURAL RESOURCE TECHNOLOGY, JUNE AND JULY 2011, 1655 110523.XLS AND 1655 110718.XLS.
6. POST DREDGE QUALITY ASSURANCE SAMPLES SURVEYED BY NATURAL RESOURCE TECHNOLOGY, JULY - DECEMBER 2011, 1655 POST DREDGE TSOA.XLS AND 1655 POST DREDGE PAH.XLS.
7. PORTIONS OF THIS DRAWING WERE DEVELOPED FROM POLLUTION RISK SERVICES' 100K DESIGN, MARCH 2011 (DRAWINGS DATED NOVEMBER 2010) FOR SHEBOYGAN RIVER & HARBOR PROJECT. FRS DESIGN FOR PCB DREDGING IS SUBJECT TO CHANGE BASED ON THEIR PLANNED FURTHER CHARACTERIZATION.

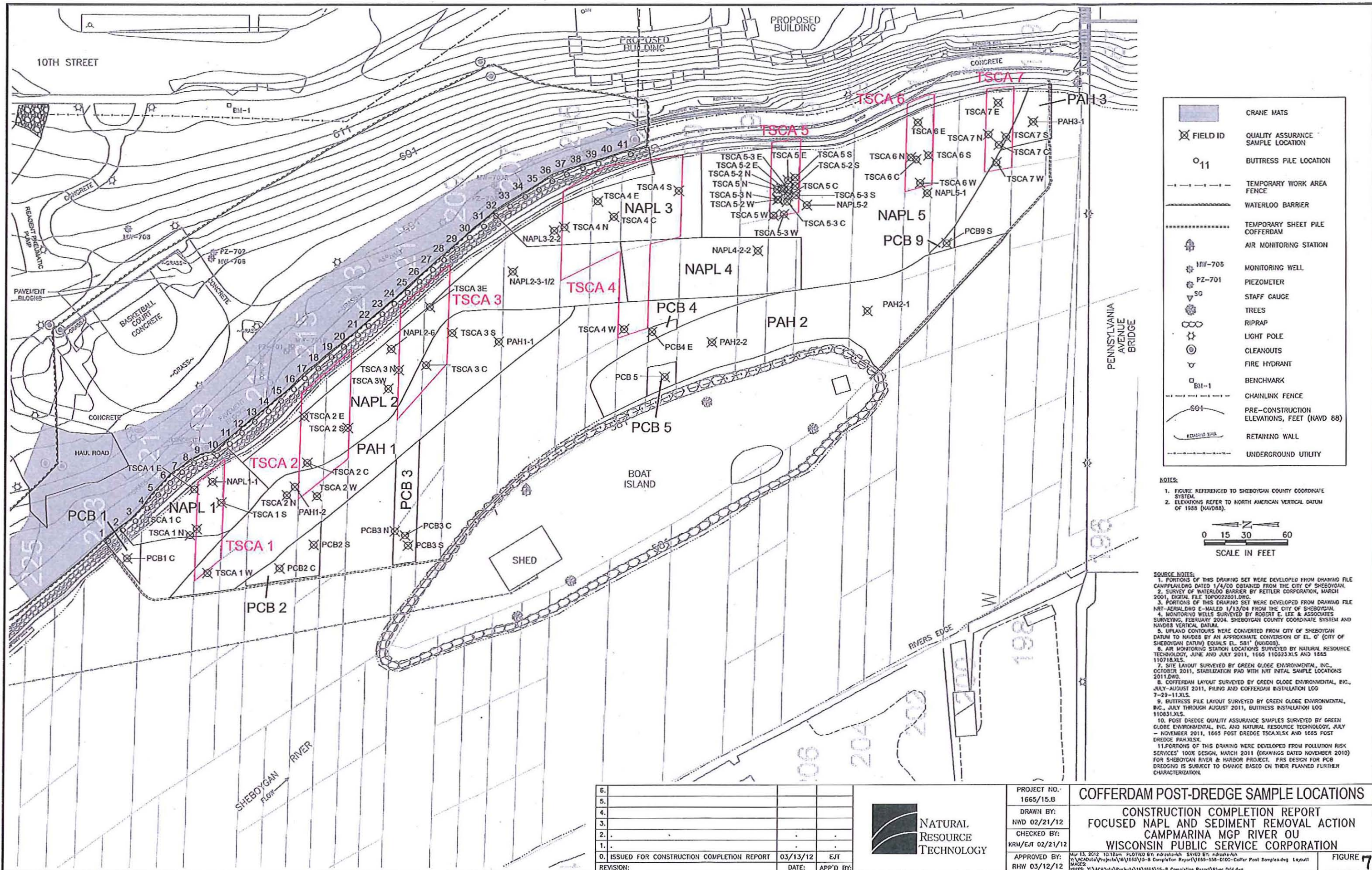
6.			
5.			
4.			
3.			
2.			
1.			
0.	ISSUED FOR CONSTRUCTION COMPLETION REPORT	03/13/12	EJT
REVISION:		DATE:	APP'D BY:



PROJECT NO.	1665/15.8
DRAWN BY:	NWD 02/21/12
CHECKED BY:	KRM/EJT 02/21/12
APPROVED BY:	RHW 03/12/12

SOUTH POST-DREDGE SAMPLE LOCATIONS
CONSTRUCTION COMPLETION REPORT
FOCUSED NAPL AND SEDIMENT REMOVAL ACTION
CAMPMARINA MGP RIVER OU
WISCONSIN PUBLIC SERVICE CORPORATION

FIGURE 6



- CRANE MATS
- FIELD ID
- QUALITY ASSURANCE SAMPLE LOCATION
- BUTTRESS PILE LOCATION
- TEMPORARY WORK AREA FENCE
- WATERLOO BARRIER
- TEMPORARY SHEET PILE COFFERDAM
- AIR MONITORING STATION
- MW-705 MONITORING WELL
- PZ-701 PIEZOMETER
- SG STAFF GAUGE
- TREES
- RIPRAP
- LIGHT POLE
- CLEANOUTS
- FIRE HYDRANT
- BM-1 BENCHMARK
- CHAINLINK FENCE
- 601 PRE-CONSTRUCTION ELEVATIONS, FEET (NAVD 88)
- RETAINING WALL
- UNDERGROUND UTILITY

NOTES:

- FIGURE REFERENCED TO SHEBOYGAN COUNTY COORDINATE SYSTEM.
- ELEVATIONS REFER TO NORTH AMERICAN VERTICAL DATUM OF 1885 (NAVD85).

0 15 30 60
SCALE IN FEET

SOURCE NOTES:

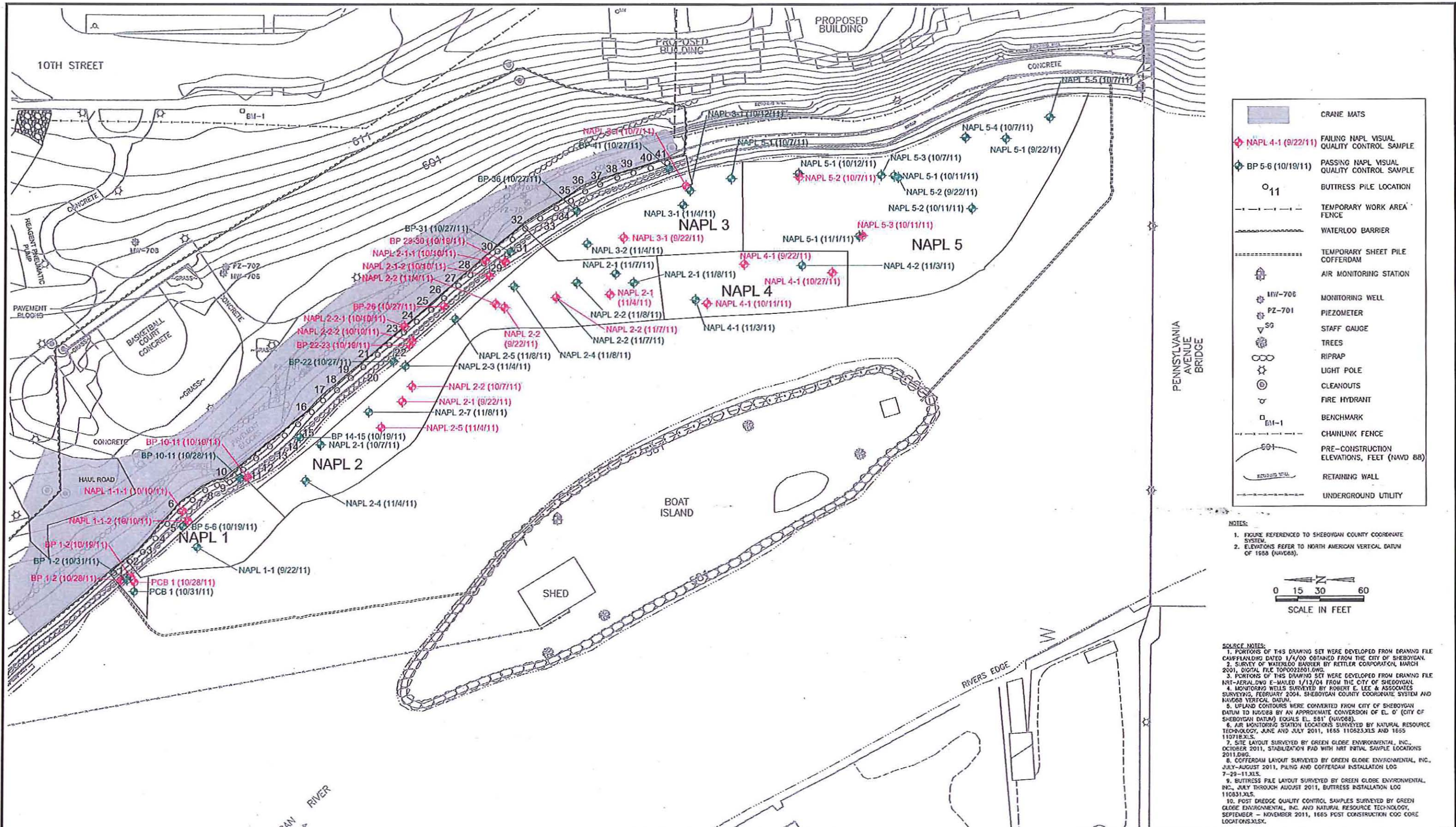
- PORTIONS OF THIS DRAWING SET WERE DEVELOPED FROM DRAWING FILE CAMPPLAND.DWG DATED 1/4/00 OBTAINED FROM THE CITY OF SHEBOYGAN.
- SURVEY OF WATERLOO BARRIER BY FETTLER CORPORATION, MARCH 2001, DIGITAL FILE TOPO022501.DWG.
- PORTIONS OF THIS DRAWING SET WERE DEVELOPED FROM DRAWING FILE NRT-AERIAL.DWG E-MAILED 1/13/04 FROM THE CITY OF SHEBOYGAN.
- MONITORING WELLS SURVEYED BY ROBERT E. LEE & ASSOCIATES SURVEYING, FEBRUARY 2004, SHEBOYGAN COUNTY COORDINATE SYSTEM AND NAVD83 VERTICAL DATUM.
- LAND CONTOURS WERE CONVERTED FROM CITY OF SHEBOYGAN DATUM TO NAVD83 BY AN APPROXIMATE CONVERSION OF EL. 0' (CITY OF SHEBOYGAN DATUM) EQUALS EL. 581' (NAVD83).
- AIR MONITORING STATION LOCATIONS SURVEYED BY NATURAL RESOURCE TECHNOLOGY, JUNE AND JULY 2011, 1665 110523.XLS AND 1665 110718.XLS.
- SITE LAYOUT SURVEYED BY GREEN GLOBE ENVIRONMENTAL, INC., OCTOBER 2011, STABILIZATION PAD WITH INTL SAMPLE LOCATIONS 2011.DWG.
- COFFERDAM LAYOUT SURVEYED BY GREEN GLOBE ENVIRONMENTAL, INC., JULY-AUGUST 2011, PILING AND COFFERDAM INSTALLATION LOG 7-29-11.XLS.
- BUTTRESS PILE LAYOUT SURVEYED BY GREEN GLOBE ENVIRONMENTAL, INC., JULY THROUGH AUGUST 2011, BUTTRESS INSTALLATION LOG 11081.XLS.
- POST DREDGE QUALITY ASSURANCE SAMPLES SURVEYED BY GREEN GLOBE ENVIRONMENTAL, INC. AND NATURAL RESOURCE TECHNOLOGY, JULY - NOVEMBER 2011, 1665 POST DREDGE TSCA.XLSX AND 1665 POST DREDGE PAH.XLSX.
- PORTIONS OF THIS DRAWING WERE DEVELOPED FROM POLLUTION RISK SERVICES' 100% DESIGN, MARCH 2011 (DRAWINGS DATED NOVEMBER 2010) FOR SHEBOYGAN RIVER & HARBOR PROJECT. FRS DESIGN FOR PCB DREDGING IS SUBJECT TO CHANGE BASED ON THEIR PLANNED FURTHER CHARACTERIZATION.

6.			
5.			
4.			
3.			
2.			
1.			
0.	ISSUED FOR CONSTRUCTION COMPLETION REPORT	03/13/12	EJT
REVISION:		DATE:	APP'D BY:



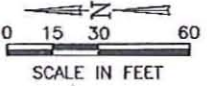
PROJECT NO.: 1665/15.B
 DRAWN BY: NWD 02/21/12
 CHECKED BY: KRM/EJT 02/21/12
 APPROVED BY: RHW 03/12/12

COFFERDAM POST-DREDGE SAMPLE LOCATIONS
 CONSTRUCTION COMPLETION REPORT
 FOCUSED NAPL AND SEDIMENT REMOVAL ACTION
 CAMPMARINA MGP RIVER OU
 WISCONSIN PUBLIC SERVICE CORPORATION



- CRANE MATS
- NAPL 4-1 (9/22/11) FAILING NAPL VISUAL QUALITY CONTROL SAMPLE
- BP 5-6 (10/19/11) PASSING NAPL VISUAL QUALITY CONTROL SAMPLE
- 11 BUTTRESS PILE LOCATION
- TEMPORARY WORK AREA FENCE
- WATERLOO BARRIER
- TEMPORARY SHEET PILE COFFERDAM
- AIR MONITORING STATION
- MW-706 MONITORING WELL
- PZ-701 PIEZOMETER
- STAFF GAUGE
- TREES
- RIPRAP
- LIGHT POLE
- CLEANOUTS
- FIRE HYDRANT
- BENCHMARK
- CHAINLINK FENCE
- 60+ PRE-CONSTRUCTION ELEVATIONS, FEET (NAVD 88)
- RETAINING WALL
- UNDERGROUND UTILITY

- NOTES:
- FIGURE REFERENCED TO SHEBOYGAN COUNTY COORDINATE SYSTEM.
 - ELEVATIONS REFER TO NORTH AMERICAN VERTICAL DATUM OF 1988 (NAVD88).



- SOURCE NOTES:
- PORTIONS OF THIS DRAWING SET WERE DEVELOPED FROM DRAWING FILE CAMP/PLANNING DATED 1/4/00 OBTAINED FROM THE CITY OF SHEBOYGAN.
 - SURVEY OF WATERLOO BARRIER BY RETTLER CORPORATION, MARCH 2001, DIGITAL FILE TOPO022801.DWG.
 - PORTIONS OF THIS DRAWING SET WERE DEVELOPED FROM DRAWING FILE NRT-AERIAL.DWG E-MAILED 1/13/04 FROM THE CITY OF SHEBOYGAN.
 - MONITORING WELLS SURVEYED BY ROBERT E. LEE & ASSOCIATES SURVEYING, FEBRUARY 2004, SHEBOYGAN COUNTY COORDINATE SYSTEM AND NAVD88 VERTICAL DATUM.
 - UPLAND CONTOURS WERE CONVERTED FROM CITY OF SHEBOYGAN DATUM TO NAVD88 BY AN APPROXIMATE CONVERSION OF EL. 0' (CITY OF SHEBOYGAN DATUM) EQUALS EL. 581' (NAVD88).
 - AIR MONITORING STATION LOCATIONS SURVEYED BY NATURAL RESOURCE TECHNOLOGY, JUNE AND JULY 2011, 1665 110625.XLS AND 1665 110718.XLS.
 - SITE LAYOUT SURVEYED BY GREEN GLOBE ENVIRONMENTAL, INC., OCTOBER 2011, STABILIZATION PAD WITH NRT INITIAL SAMPLE LOCATIONS 2011.DWG.
 - COFFERDAM LAYOUT SURVEYED BY GREEN GLOBE ENVIRONMENTAL, INC., JULY-AUGUST 2011, PILING AND COFFERDAM INSTALLATION LOG 7-29-11.XLS.
 - BUTTRESS FILE LAYOUT SURVEYED BY GREEN GLOBE ENVIRONMENTAL, INC., JULY THROUGH AUGUST 2011, BUTTRESS INSTALLATION LOG 110831.XLS.
 - POST DREDGE QUALITY CONTROL SAMPLES SURVEYED BY GREEN GLOBE ENVIRONMENTAL, INC. AND NATURAL RESOURCE TECHNOLOGY, SEPTEMBER - NOVEMBER 2011, 1665 POST CONSTRUCTION COG CORE LOCATIONS.XLS.

6.			
5.			
4.			
3.			
2.			
1.			
0.	ISSUED FOR CONSTRUCTION COMPLETION REPORT	03/13/12	EJT
REVISION:		DATE:	APP'D BY:



PROJECT NO.
1665/15.8
DRAWN BY:
HWD 02/21/12
CHECKED BY:
KRM/EJT 02/21/12
APPROVED BY:
RHW 03/12/12

COFFERDAM NAPL VISUAL QC CORE LOCATIONS
CONSTRUCTION COMPLETION REPORT
FOCUSED NAPL AND SEDIMENT REMOVAL ACTION
CAMPMARINA MGP RIVER OU
WISCONSIN PUBLIC SERVICE CORPORATION
FIGURE 8