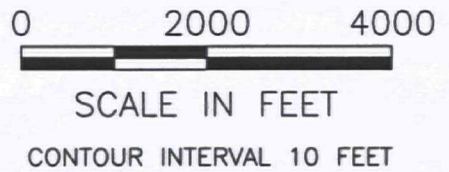


SOURCE: DIGITAL DOWNLOAD FROM
<http://STORE.USGS.GOV>.
 USGS 7.5 MINUTE QUADRANGLE,
 SHEBOYGAN NORTH AND SOUTH
 DATED 1954. REVISED 1994.



SITE LOCATION MAP

CAMPMARINA FORMER COAL GAS FACILITY
 WISCONSIN PUBLIC SERVICE CORPORATION
 SHEBOYGAN, WISCONSIN



DRAWN BY: RLH

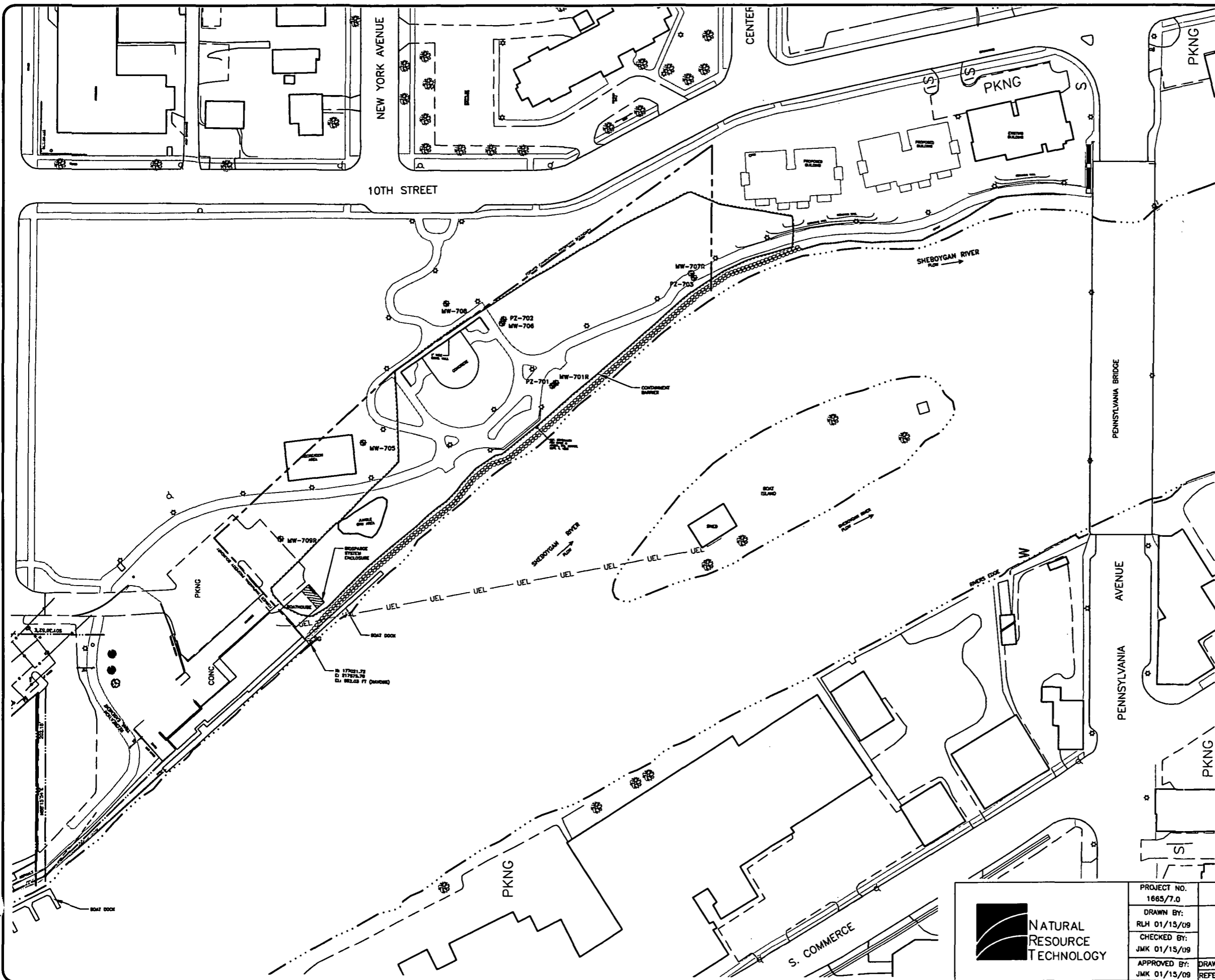
APP'D BY: JMK

DATE: 03/13/08

PROJECT NO.
1665

DRAWING NO.
1665-A01

FIGURE NO.
1

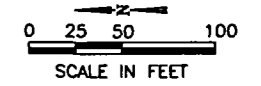


LEGEND

	MW-706	MONITORING WELL
	PZ-701	PIEZOMETER
	SG	STAFF GAUGE
		TREES
		RIPRAP
		LIGHT POLE
		FORMER CAMPMARINA PROPERTY BOUNDARY
		CONTAINMENT BARRIER
		RIVERS EDGE
	UEL	UNDERGROUND UTILITY LINE

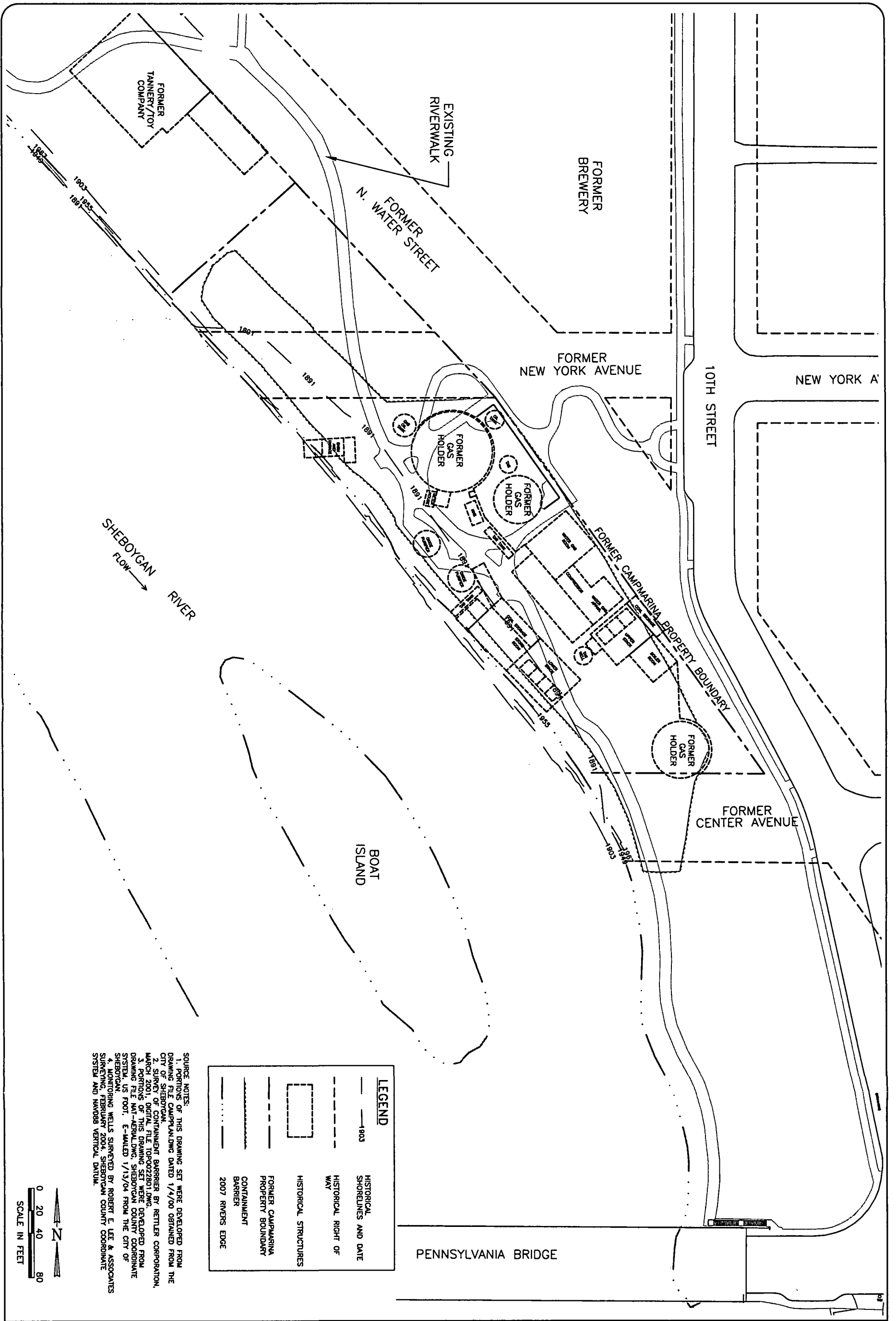
SOURCE NOTES:
 1. PORTIONS OF THIS DRAWING SET WERE DEVELOPED FROM DRAWING FILE CAMPPLAN.DWG DATED 1/4/00 OBTAINED FROM THE CITY OF SHEBOYGAN.
 2. SURVEY OF CONTAINMENT BARRIER BY RETTLER CORPORATION, MARCH 2001, DIGITAL FILE TOPO022801.DWG.
 3. PORTIONS OF THIS DRAWING SET WERE DEVELOPED FROM DRAWING FILE NAT-AERIAL.DWG, SHEBOYGAN COUNTY COORDINATE SYSTEM, US FOOT, E-MAILED 1/13/04 FROM THE CITY OF SHEBOYGAN.
 4. MONITORING WELLS SURVEYED BY ROBERT E. LEE & ASSOCIATES SURVEYING, FEBRUARY 2004, SHEBOYGAN COUNTY COORDINATE SYSTEM AND NAVD83 VERTICAL DATUM.

DATUM (FT)		
ICLD83	NAVD83	CITY OF SHEBOYGAN
579.8	581	0



PROJECT NO.
1665/7.0
 DRAWN BY:
RLM 01/15/09
 CHECKED BY:
JMK 01/15/09
 APPROVED BY:
JMK 01/15/09

SITE PLAN
 REMEDIAL INVESTIGATION REPORT
 RIVER OU SHEBOYGAN-CAMPMARINA
 WISCONSIN PUBLIC SERVICE CORPORATION
 SHEBOYGAN, WISCONSIN
 DRAWING NO: 1665-7-802
 REFERENCE:
 FIGURE NO.
2



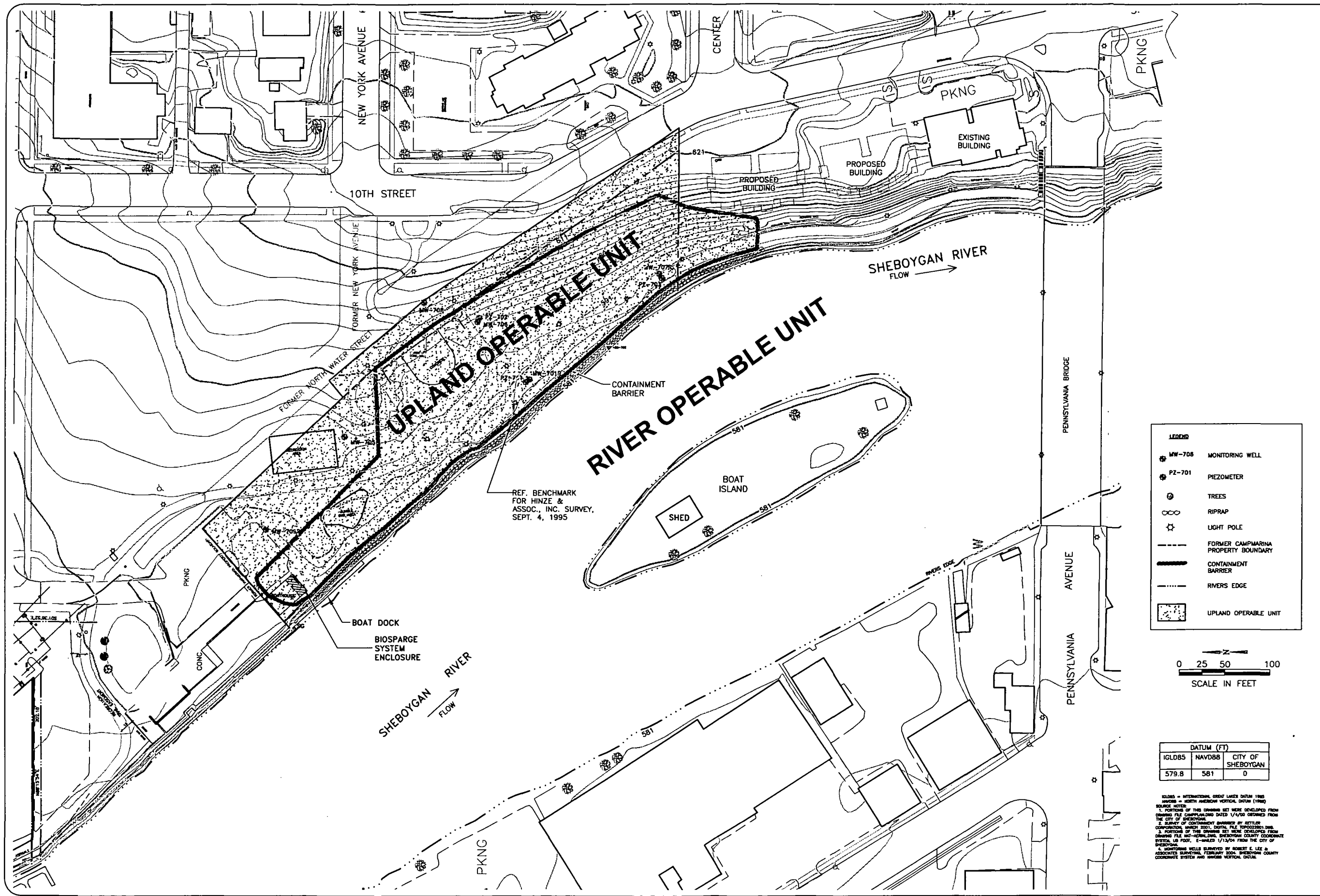
SOURCE NOTES:
 1. PORTIONS OF THIS DRAWING SET WERE DEVELOPED FROM THE DRAWING FILE CAMPPLAN.DWG DATED 1/4/00 OBTAINED FROM THE CITY OF SHEBOYGAN.
 2. SURVEY OF CONTAINMENT BARRIER BY RETTLER CORPORATION, MARCH 2001, DIGITAL FILE TOP00222801.DWG.
 3. PORTIONS OF THIS DRAWING SET WERE DEVELOPED FROM DRAWING FILE NAT-AERIAL.DWG, SHEBOYGAN COUNTY COORDINATE SYSTEM, US FOOT, E-MAILED 1/13/04 FROM THE CITY OF SHEBOYGAN.
 4. MONITORING WELLS SURVEYED BY ROBERT E. LEE & ASSOCIATES SURVEYING, FEBRUARY 2004, SHEBOYGAN COUNTY COORDINATE SYSTEM AND NAD83 VERTICAL DATUM.

HISTORICAL SITE LAYOUT
 REMEDIAL INVESTIGATION REPORT
 RIVER OU SHEBOYGAN-CAMPMARINA
 WISCONSIN PUBLIC SERVICE CORPORATION
 SHEBOYGAN, WISCONSIN

DRAWN BY: RLH	DATE: 01/22/09
CHECKED BY: JMK	DATE: 01/22/09
APPROVED BY: JMK	DATE: 01/22/09
DRAWING NO: 1665-7-B03	
REFERENCE: .	



PROJECT NO.
 1665/7.0
 FIGURE NO.
 3

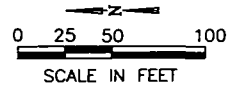


DRAWN BY: RLH DATE: 01/22/09
 CHECKED BY: JMK DATE: 01/22/09
 APPROVED BY: JMK DATE: 01/22/09
 DRAWING NO: 1665-7-B04
 REFERENCE:

RI/FS OPERABLE UNIT AREAS
 REMEDIAL INVESTIGATION REPORT
 RIVER OU SHEBOYGAN-CAMPMARINA
 WISCONSIN PUBLIC SERVICE CORPORATION
 SHEBOYGAN, WISCONSIN

LEGEND

- MW-708 MONITORING WELL
- PZ-701 PIEZOMETER
- TREES
- RIPRAP
- LIGHT POLE
- FORMER CAMPMARINA PROPERTY BOUNDARY
- CONTAINMENT BARRIER
- RIVERS EDGE
- UPLAND OPERABLE UNIT

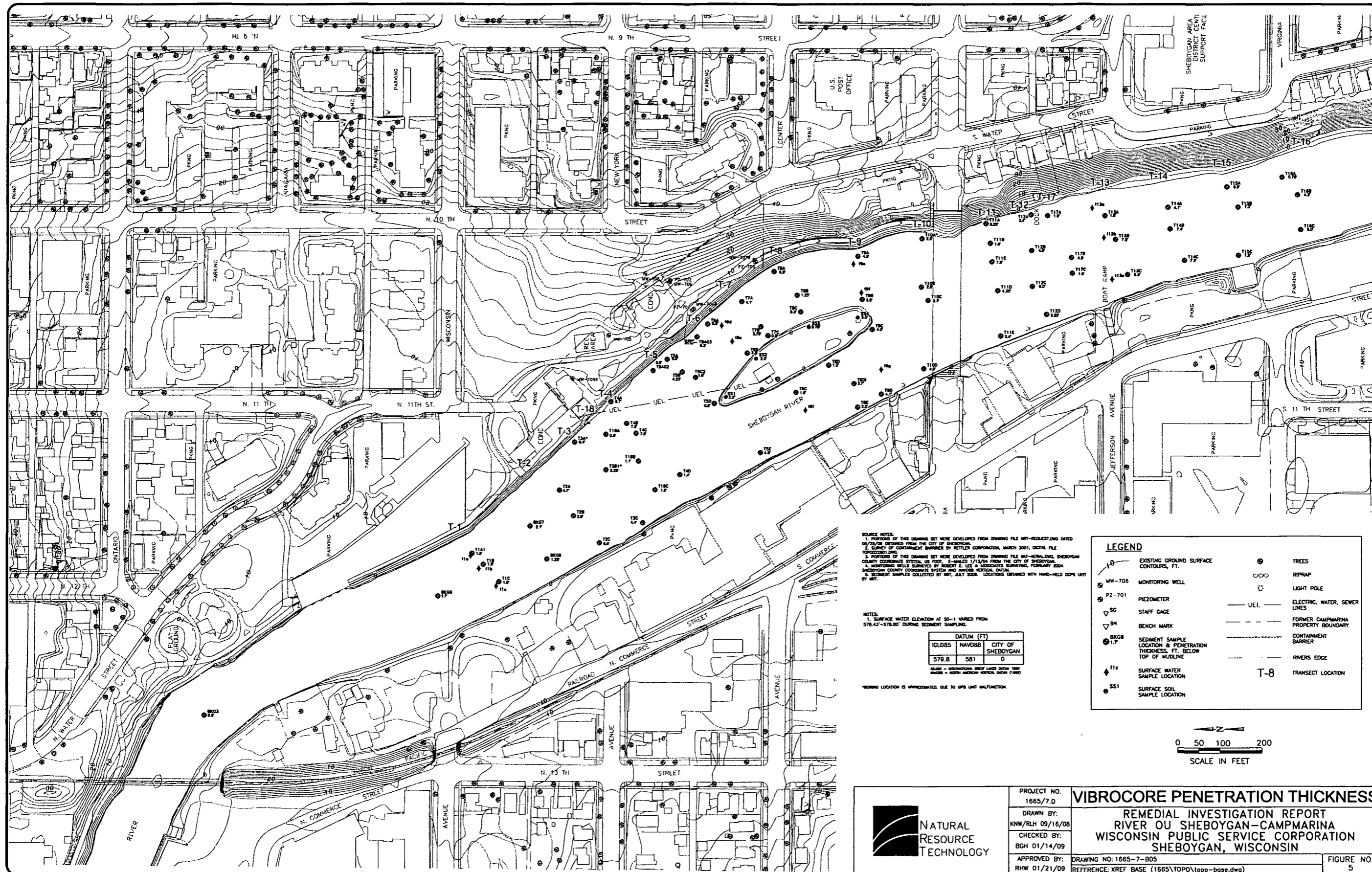


DATUM (FT)		
IGLD85	NAVD88	CITY OF SHEBOYGAN
579.8	581	0

IGLD85 = INTERNATIONAL GREAT LAKES DATUM 1985
 NAVD88 = NORTH AMERICAN VERTICAL DATUM (1988)
 SOURCE NOTES:
 1. PORTIONS OF THIS DRAWING SET WERE DEVELOPED FROM DRAWING FILE CAMPMARINA DATED 1/4/00 OBTAINED FROM THE CITY OF SHEBOYGAN.
 2. SURVEY OF CONTAINMENT BARRIER BY RETTLER CONSULTING ENGINEERS, INC. DATE FILE UNKNOWN.
 3. PORTIONS OF THIS DRAWING SET WERE DEVELOPED FROM DRAWING FILE SHEBOYGAN, SHEBOYGAN COUNTY COORDINATE SYSTEM, 1/8" = 1' SCALE, 1/13/04 FROM THE CITY OF SHEBOYGAN.
 4. MONITORING WELLS SURVEYED BY ROBERT E. LEE IN ASSOCIATION SURVEYING, FURNARY 2004. SHEBOYGAN COUNTY COORDINATE SYSTEM AND NAVD88 VERTICAL DATUM.



PROJECT NO.
 1665/7.0
 FIGURE NO.
 4



SOURCE NOTES:
 1. PORTIONS OF THIS DRAWING SET WERE DEVELOPED FROM DRAWING FILE HW-REDEVELOP/DWG DATED 06/24/08 OBTAINED FROM THE CITY OF SHEBOYGAN.
 2. SURVEY OF CAMPBARRIA SHORES BY KETTER CORPORATION, MARCH 2001, DIGITAL FILE TOPO022801.DWG.
 3. PORTIONS OF THIS DRAWING SET WERE DEVELOPED FROM DRAWING FILE HW-REDEVELOP, SHEBOYGAN COUNTY COORDINATE SYSTEM, US FOOT, E-MAILED 1/13/04 FROM THE CITY OF SHEBOYGAN.
 4. MONITORING WELLS SUBMITTED BY ROBERT E. UEL & ASSOCIATES SURVEYING, FEBRUARY 2004. SHEBOYGAN COUNTY COORDINATE SYSTEM AND HORIZONTAL DATUM.
 5. SEDIMENT SAMPLES COLLECTED BY RHT, JULY 2008. LOCATIONS OBTAINED WITH HAND-HELD GPS UNIT BY RHT.

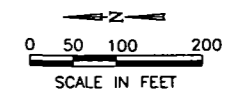
NOTES:
 1. SURFACE WATER ELEVATION AT SG-1 VARIED FROM 578.43'-578.80' DURING SEDIMENT SAMPLING.

DATUM (FT)		
ICLD85	NAVOD88	CITY OF SHEBOYGAN
579.8	581	0

ICLD85 - INTERNATIONAL GREAT LAKES DATUM 1985
 NAVOD88 - NORTH AMERICAN VERTICAL DATUM (1988)

*RIVER LOCATION IS APPROXIMATED, DUE TO GPS UNIT MALFUNCTION.

LEGEND	
	EXISTING GROUND SURFACE CONTOURS, FT.
	MONITORING WELL
	PIEZOMETER
	STAFF GAGE
	BENCH MARK
	SEDIMENT SAMPLE LOCATION & PENETRATION THICKNESS, FT. BELOW TOP OF MUDLINE
	SURFACE WATER SAMPLE LOCATION
	SURFACE SOIL SAMPLE LOCATION
	TREES
	RIPRAP
	LIGHT POLE
	ELECTRIC, WATER, SEWER LINES
	FORMER CAMPBARRIA PROPERTY BOUNDARY
	CONTAINMENT BARRIER
	RIVERS EDGE
	TRANSECT LOCATION



	PROJECT NO. 1665/7.0	VIBROCORE PENETRATION THICKNESS REMEDIATION INVESTIGATION REPORT RIVER OU SHEBOYGAN-CAMPBARRIA WISCONSIN PUBLIC SERVICE CORPORATION SHEBOYGAN, WISCONSIN	DRAWING NO. 1665-7-B05 REFERENCE: XREF BASE (1665\TOPO\topo-base.dwg)	FIGURE NO. 5
	DRAWN BY: KNW/RLH 09/16/08			
	CHECKED BY: BGH 01/14/09			
	APPROVED BY: RHW 01/21/09			