

# WPSC Marinette MGP Superfund Site

September 20, 2012

# WPSC Marinette MGP Site Location



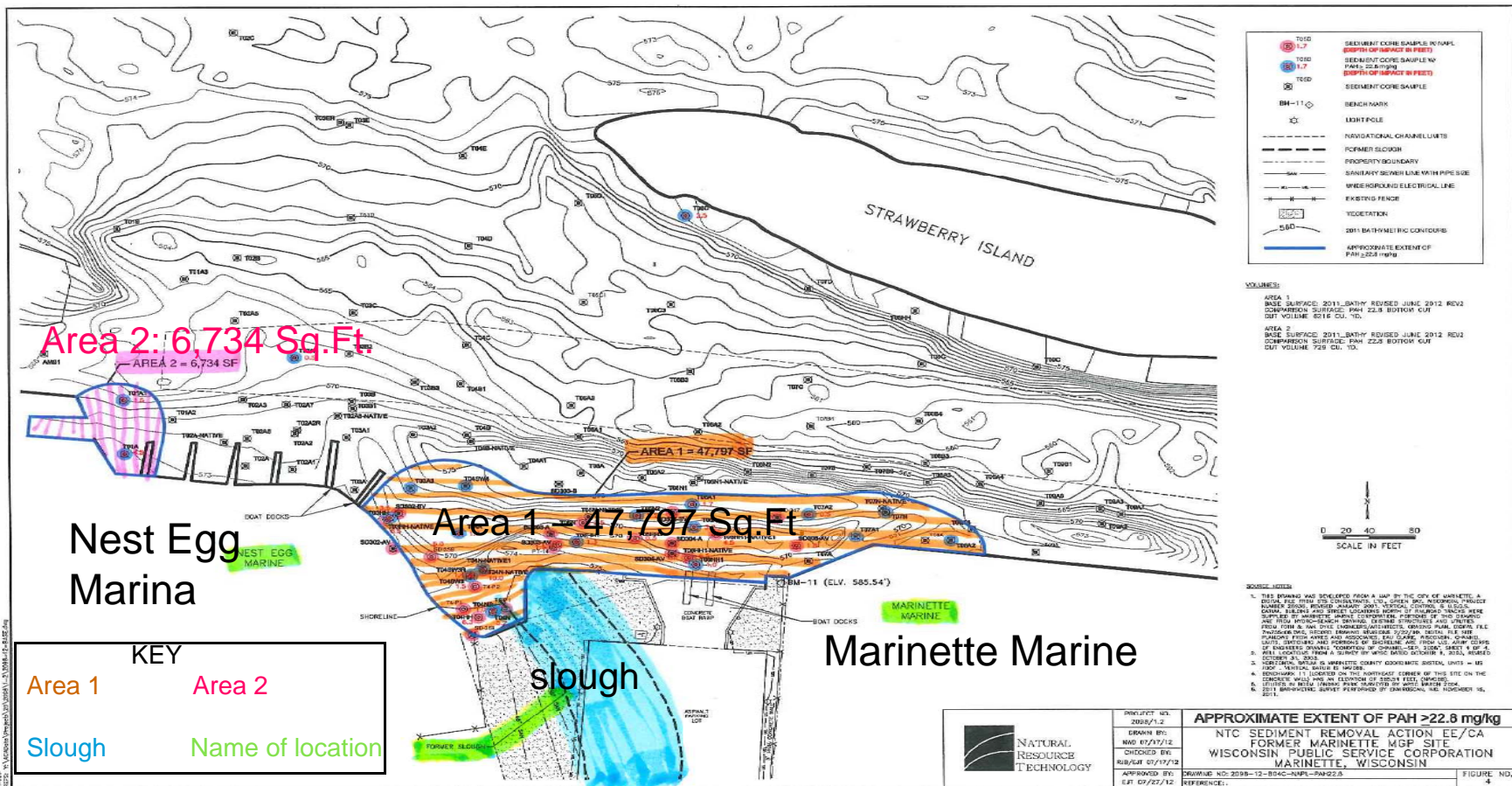


# Proposed Plan

- Dredging oily sediment from Areas 1 & 2
- Mixing sediment with additives to remove water
- Disposing of sediment in off-site landfill
- Treating removed water on-site and discharging back to river
- Restoration of upland staging areas (spring 2013)



# Proposed Sediment Cleanup Areas 1 & 2





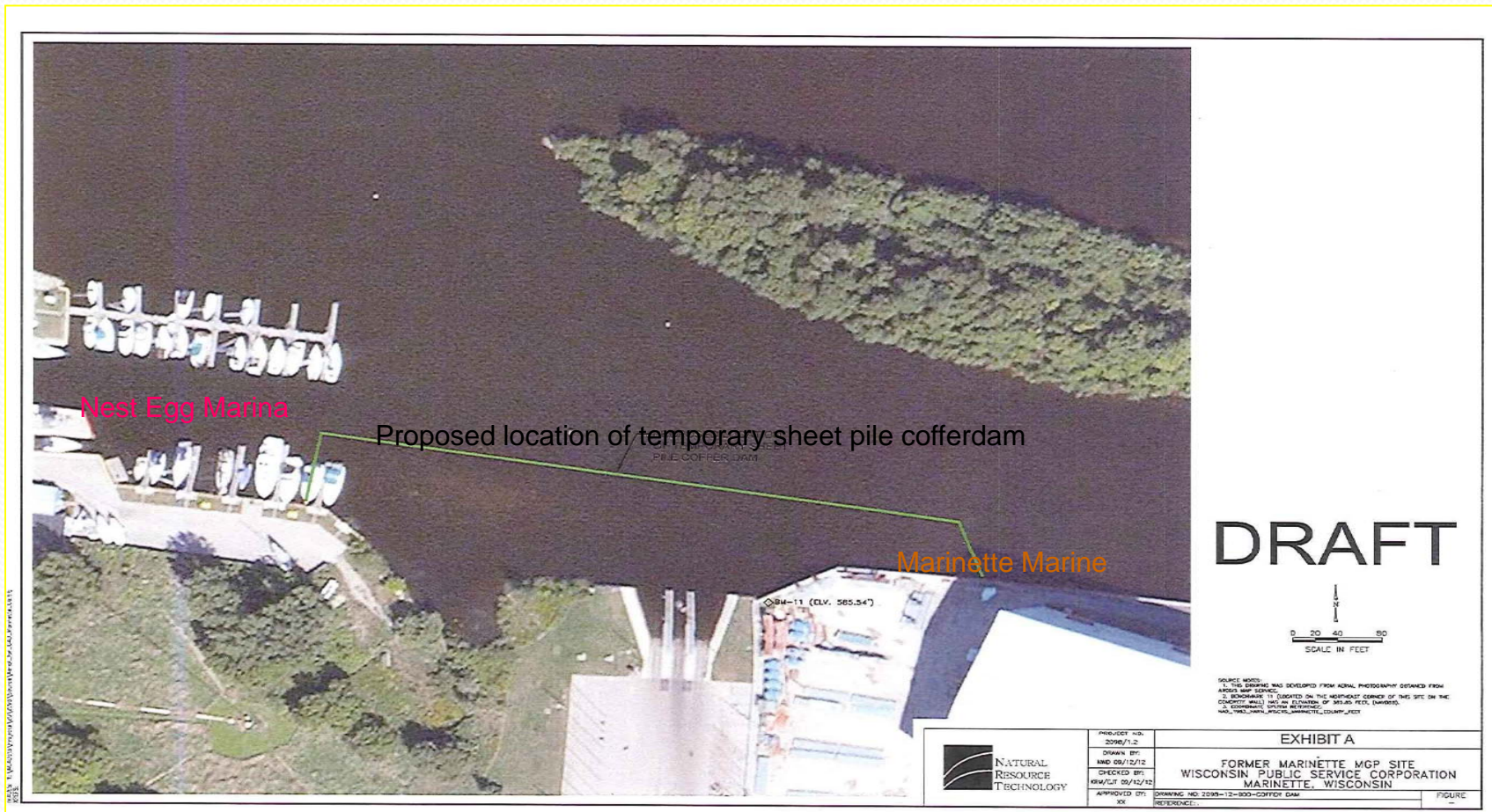
# 2012 Non-Time Critical Cleanup

Wisconsin Public Service Corp. will:

- build a coffer dam made of metal sheet piling to isolate the PAHs
- use a backhoe on a barge to dig up contaminated sediment
- remove PAHs from sediment between Strawberry Island and the shoreline
- separate the water from the sediment
- mix chemicals with sediment to make it firm
- transport it for disposal



# Proposed Sediment Cleanup Area 1







Dredging at WPSC Campmarina Site,  
Sheboygan, WI.

NAPL and sheen observed on the river





# Evaluating the Options

- Effectiveness
  - protects of human health and environment
  - complies with other federal & state laws
  - works over the long term
  - reduces toxicity, movement & amount of pollution



# Evaluating the Options, cont.

- Implementability
  - evaluates how practical an option is and if materials/services are available
  - determines if WDNR accepts the option
  - evaluates whether community accepts the option
- Cost
  - short- and long-term costs





# What are MGPs?

- operated long before environmental laws were in effect
- provided gas for heat from coal or oil
- generated waste using specific manufacturing processes
- produced by-products/residues such as tars, sludges, light oils
- contained polycyclic aromatic hydrocarbons, or PAHs
- contaminated soil, ground water, sediment
- contained known/suspected cancer-causing chemicals



## About WPSC Marinette

- historically industrial but now a city wastewater treatment plant
- WPSC owned/operated a gas plant from 1910-1960 to provide fuel & electricity from coal
- structures were removed in the 1960s
- coal waste moved from the old plant to the river
- waste included hazardous materials such as cyanides, metals, solvents, oily tars
- oily tars composed primarily of PAHs
- WPSC is funding the work





# Next Steps

- respond in writing to public comments
- select final plan
- announce final plan in newspaper and on web page
- begin sediment excavation



# Future Steps

- sample ground water -- through summer 2013
- prepare a report with sampling results – summer 2014
- develop cleanup options for soil & ground water – winter 2014
- recommend another cleanup plan – summer 2015
- select another final cleanup plan – winter 2015





# Partners

- Wisconsin Public Service Corporation
- EPA RCRA sediment dredging project—Ansul, Inc.
- Great Lakes National Program Office – Area of Concern
- WDNR – habitat restoration & fish monitoring programs
- Local community – better fishing, more boat launches



## Contact Information

- Margaret Gielniewski
- [Gielniewski.margaret@epa.gov](mailto:Gielniewski.margaret@epa.gov)
- (800) 621-8431 x 66244
- Public Comments in Writing
  - Due September 28, 2012