

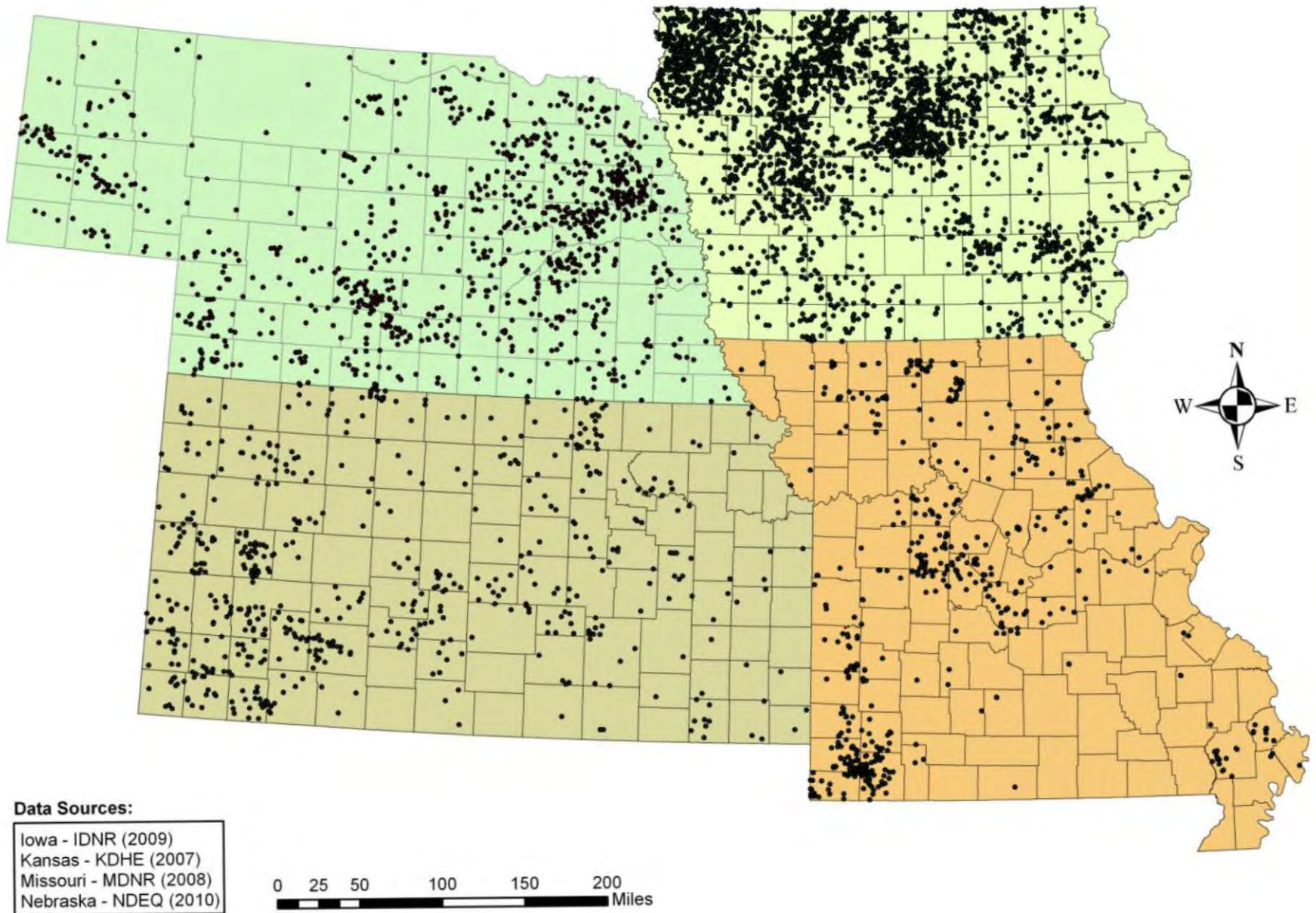
EPA Region 7 AFO/CAFO Inspection Program



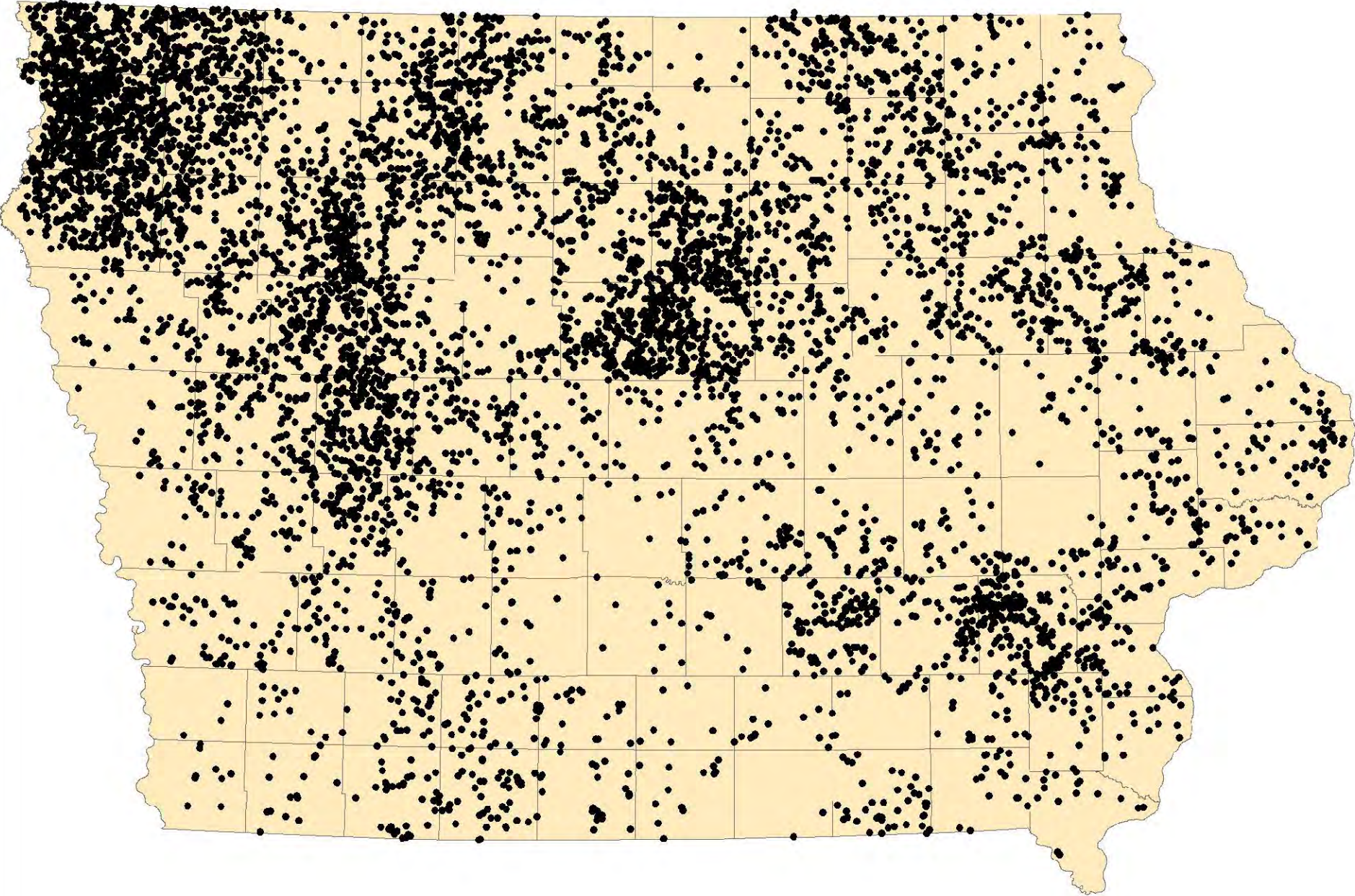
Presented by:

Stephen Pollard
AFO/CAFO Enforcement Coordinator
EPA Region 7

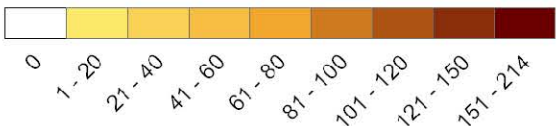
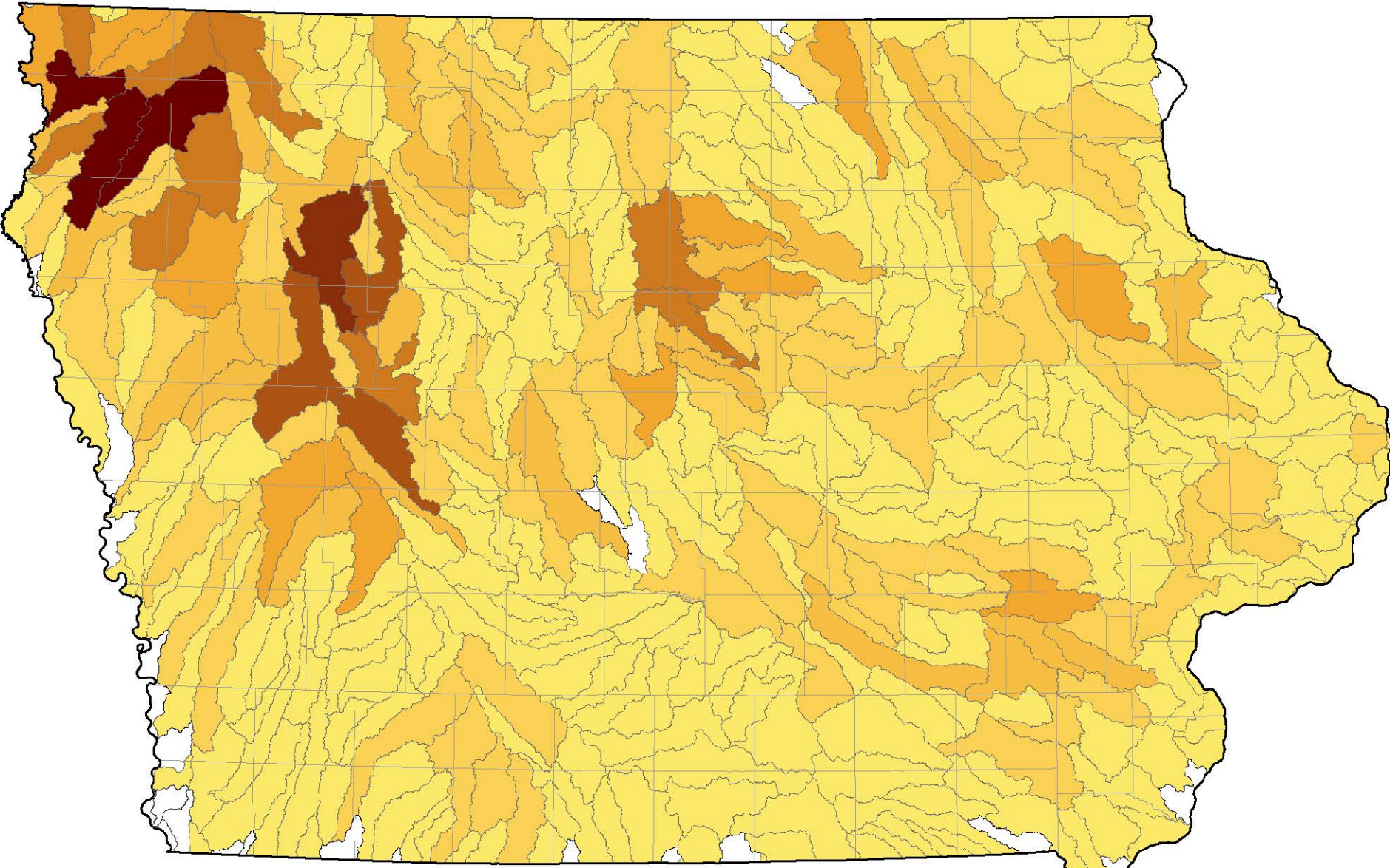
Region 7 CAFO Distribution



Large and Medium Sized AFOs in Iowa

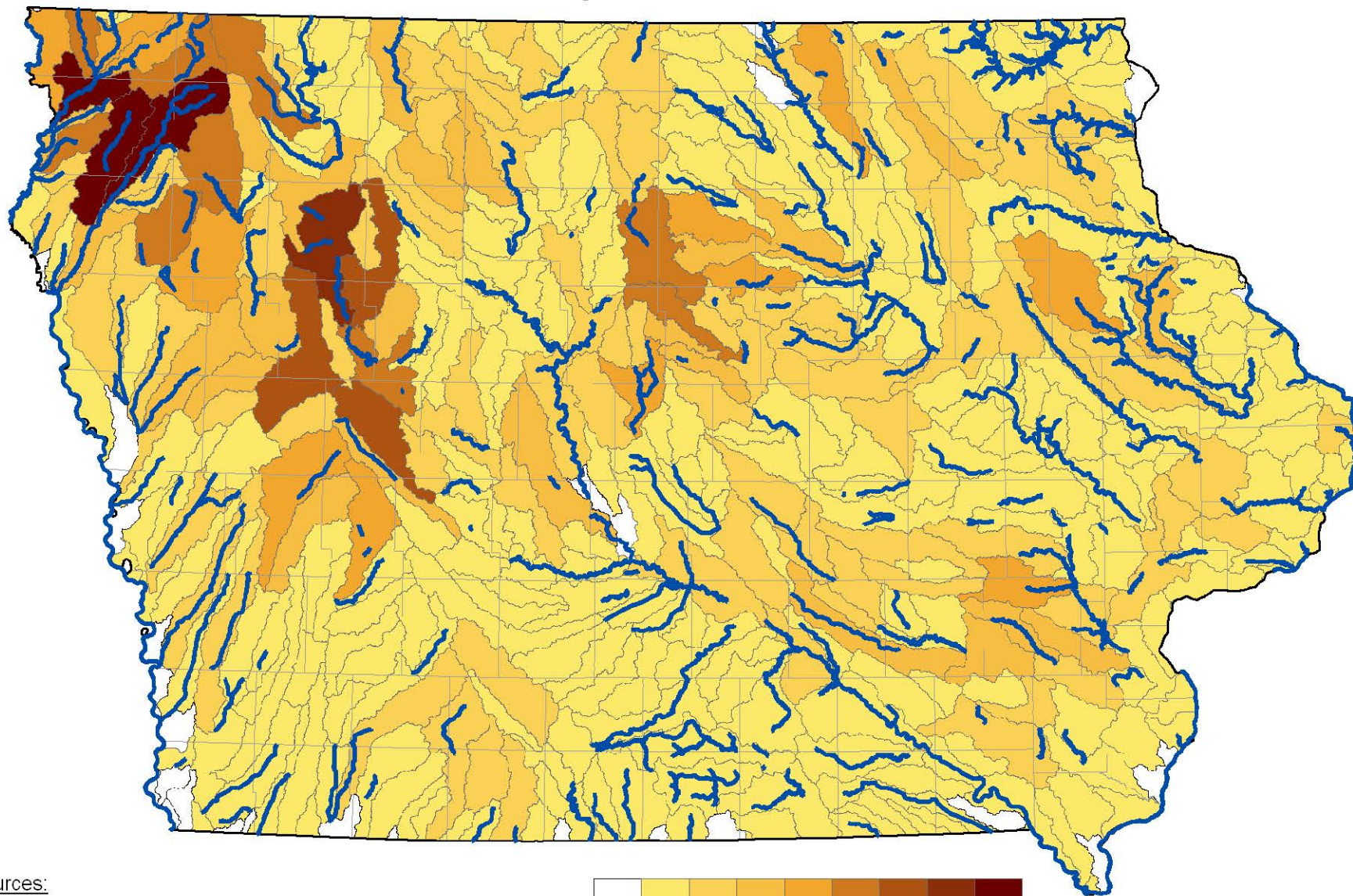


Large and Medium Sized AFOs Densities by HUC 10



Data Sources:
AFO - IDNR Data (2011)
Watershed Boundaries - USGS

Large and Medium Sized AFOs Densities by HUC 10 with Impaired Waters

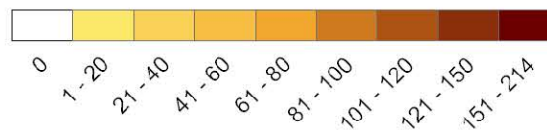


Data Sources:

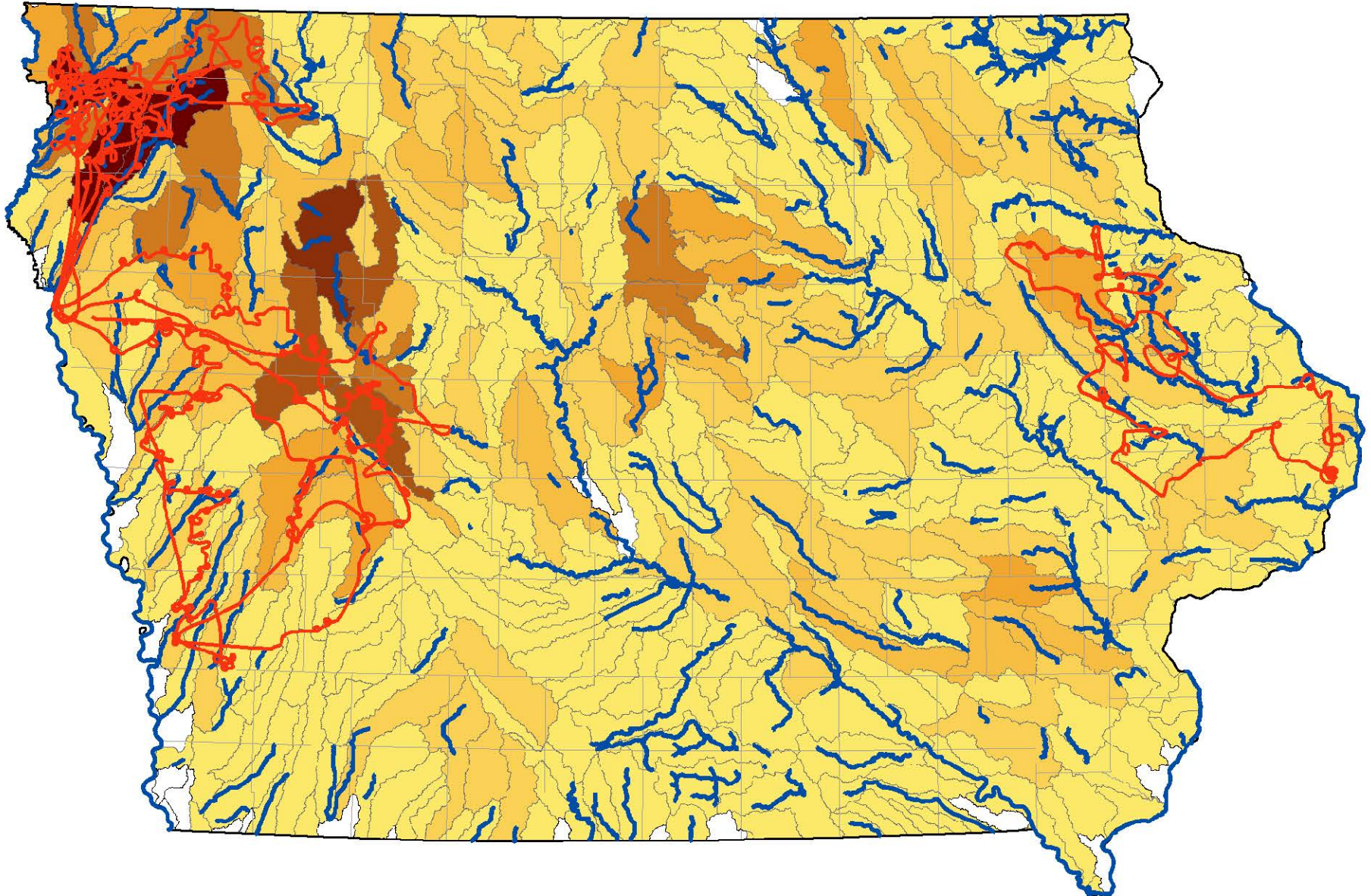
AFO - IDNR Data (2011)

Watershed Boundaries - USGS

Impaired Waters - IDNR's Surface Water Quality Integration Report (2008)



EPA Region 7 Flight Paths

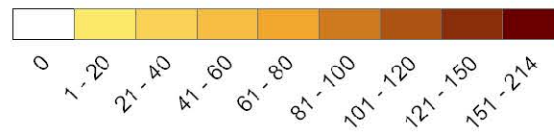


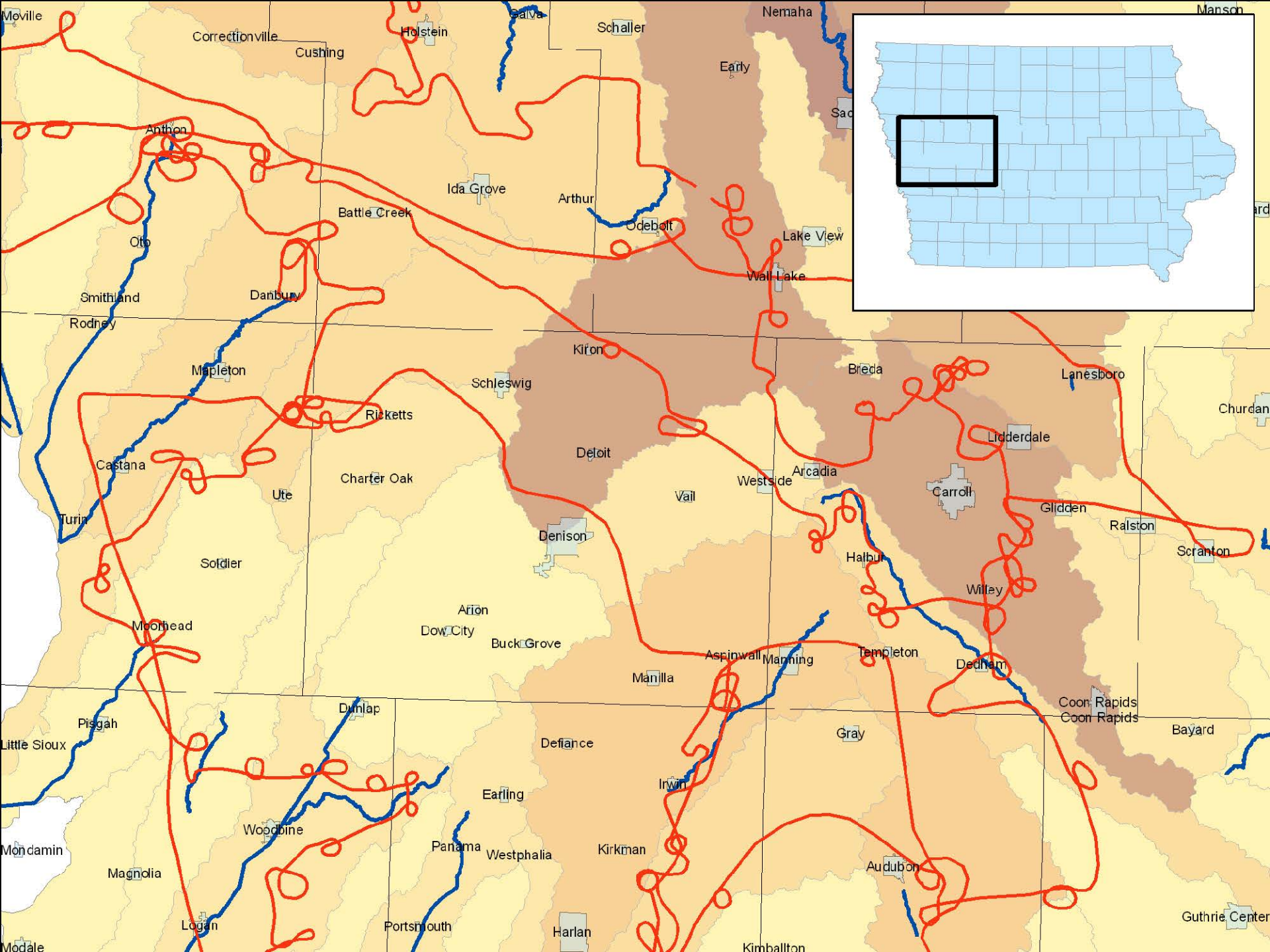
Data Sources:

AFO - IDNR Data (2011)

Watershed Boundaries - USGS

Impaired Waters - IDNR's Surface Water Quality Integration Report (2008)







Nikon D5000 w/ GPS



Cessna 172













04.29.2010 10:43



04.29.2010 10:43



06.24.2010 13:18





03.10.2011 11:37



Medium CAFOs

Medium CAFO Definition

An AFO is defined as a Medium CAFO if:

(i) The type and number of animals that it stables or confines falls within any of the following ranges:

AND

(ii) Either one of the following conditions are met:

Species	
Beef	300 – 999
Dairy	200 – 699
Swine > 55 lbs	750 – 2,499
Swine < 55 lbs	3,000 – 9,999
Layer/Broiler– Wet	9,000 – 29,999
Layer – Dry	25,000 – 81,999
Chicken – Dry	37,500 – 124,999
Turkey	16,500 – 54,999
Sheep/Lambs	3,000 – 9,999
Horses	150 – 499

- (A) Pollutants are discharged into waters of the United States through a man-made ditch, flushing system, or other similar man-made device; or
- (B) Pollutants are discharged directly into waters of the United States which originate outside of and pass over, across, or through the facility or otherwise come into direct contact with the animals confined in the operation.

Road Ditches



Road
Ditches





Road Ditch



Drainage Ditch

Drainage Tiles



06.24.2010 12:10

Drainage Tiles



Options for Producers

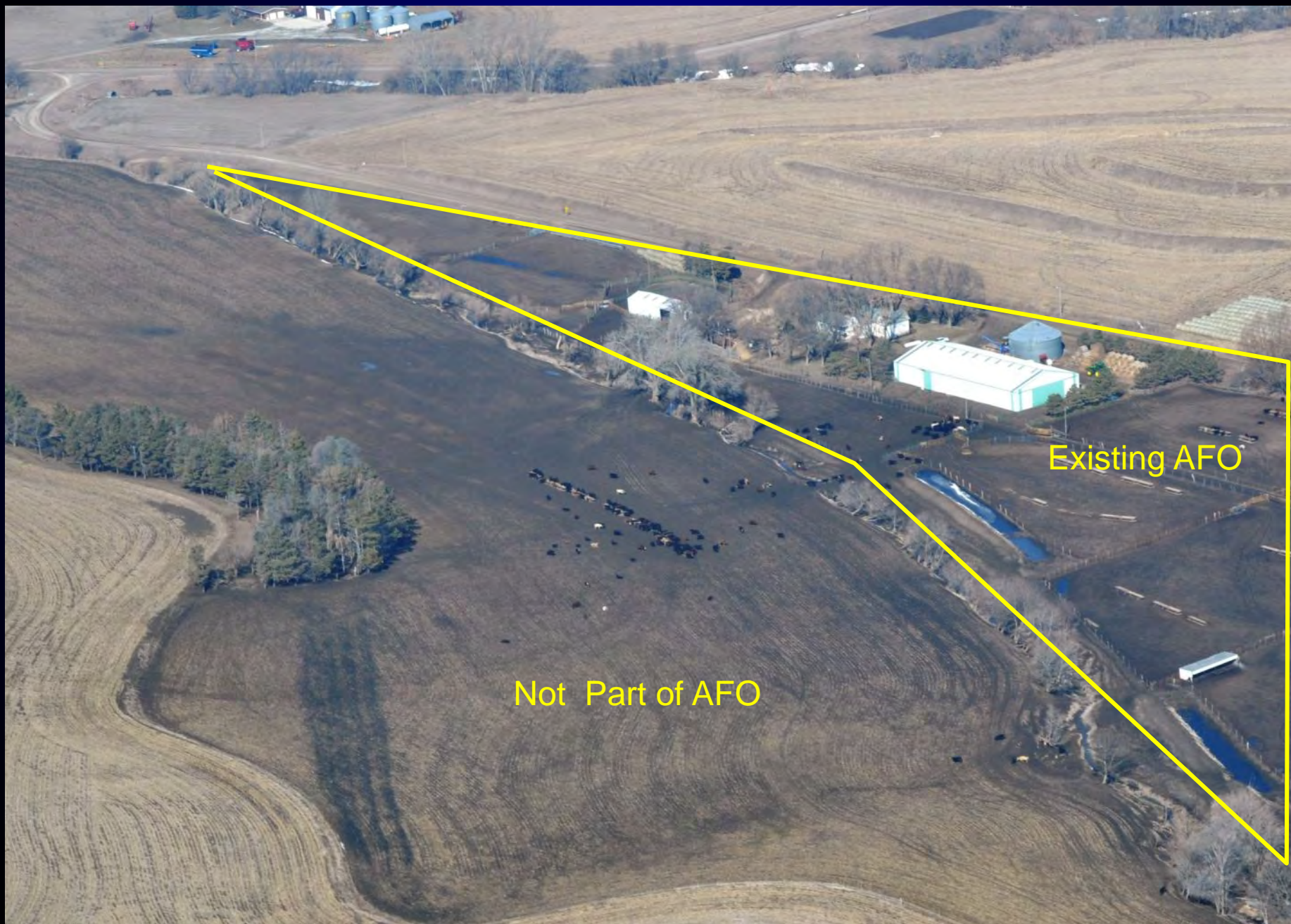
Facilities have four options to consider:

- Remove the man-made conveyance;
- Stop the discharge;
- Obtain an NPDES permit as a Medium CAFO and install appropriate controls; **or**
- Increase size and obtain NPDES permit as a large CAFO and install appropriate controls.

Winter Feeding Areas

Factors to consider with winter feeding areas

- **Does it meet the definition of an AFO or is it an extension of an existing AFO?**
- **“No Vegetation” criteria needs to be evaluated when animals are confined, not during the normal growing season.**
- **Location, Location, Location**



Existing AFO

Not Part of AFO

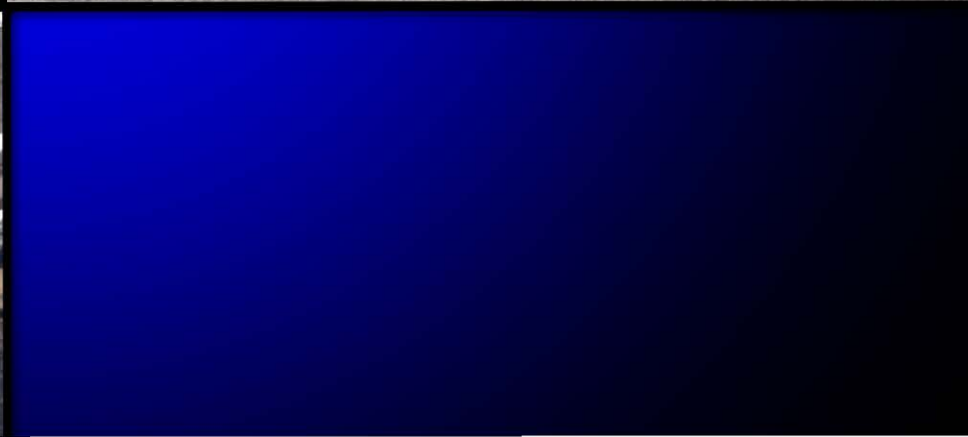


06.29.2011 10:09



Not Part of AFO

06.29.2011 09:23







Manure/Litter Stockpiles

Factors to consider with Stockpiles

- **Stockpiles are considered part of the production area.**
- **Stockpiles associated with Large CAFOs are not allowed to discharge unless it is pursuant to a NPDES permit.**
- **Location, Location, Location**



09.12.2011 18:26



Other Areas of Concern

- Sludge Accumulation
- NMPs

Questions/Comments