

The Natural Capital Project



The Natural Capital Project



1. Science R&D → new tools
2. Implementing in sites / sectors globally
3. Engaging leaders



ECOSYSTEMS AND HUMAN WELL-BEING

Synthesis



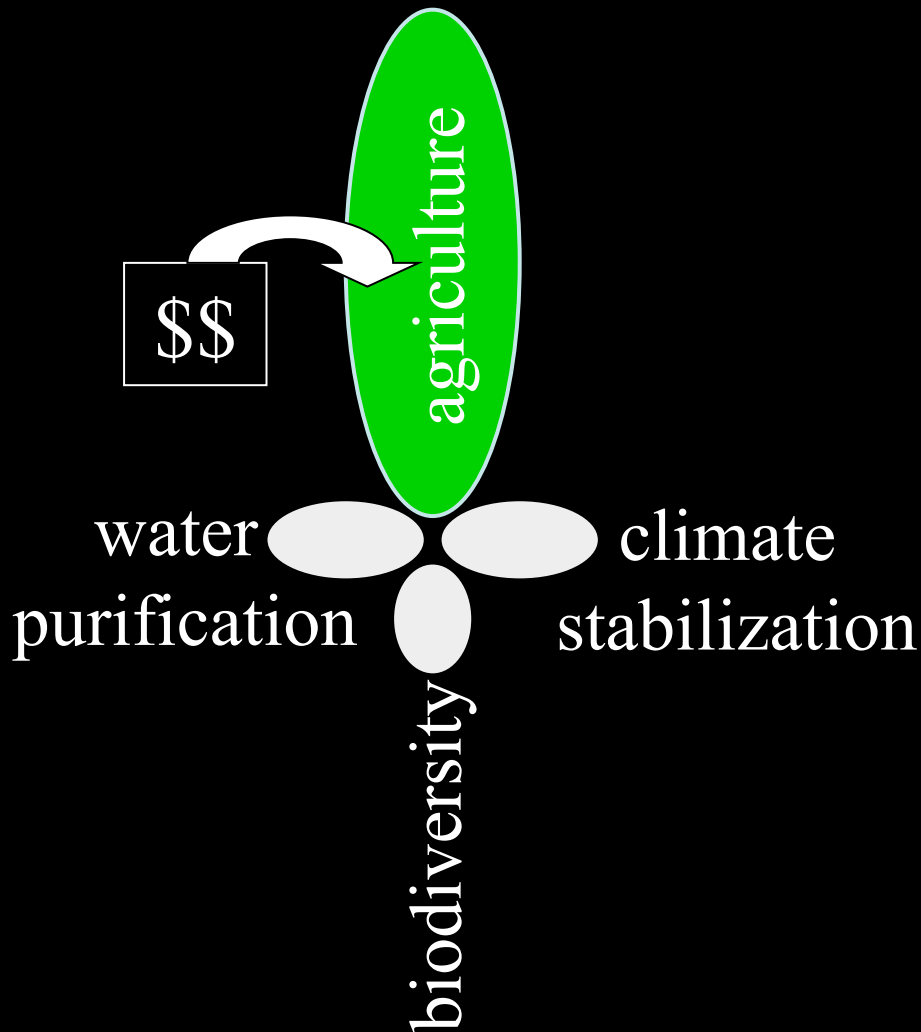
MILLENNIUM ECOSYSTEM ASSESSMENT

The Millennium Ecosystem Assessment

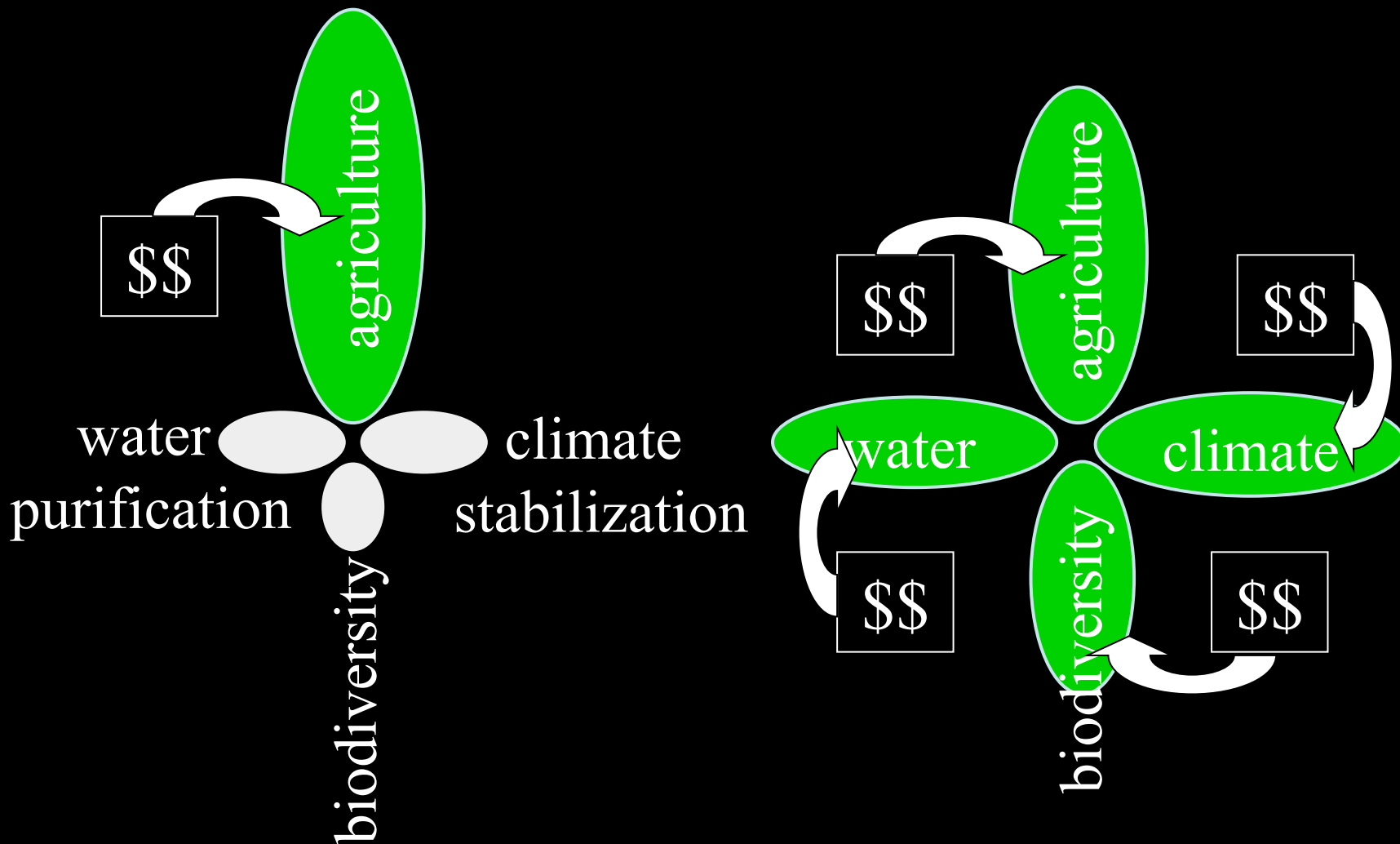
2005

***1300 Scientists
Internationally***

Investing in Natural Capital



Investing in Natural Capital



The Economist

APRIL 23RD-29TH 2005

www.economist.com

Habemus Benedict XVI

PAGE 49

The China question

PAGES 12, 29 AND 41

The stockmarket's April stumble

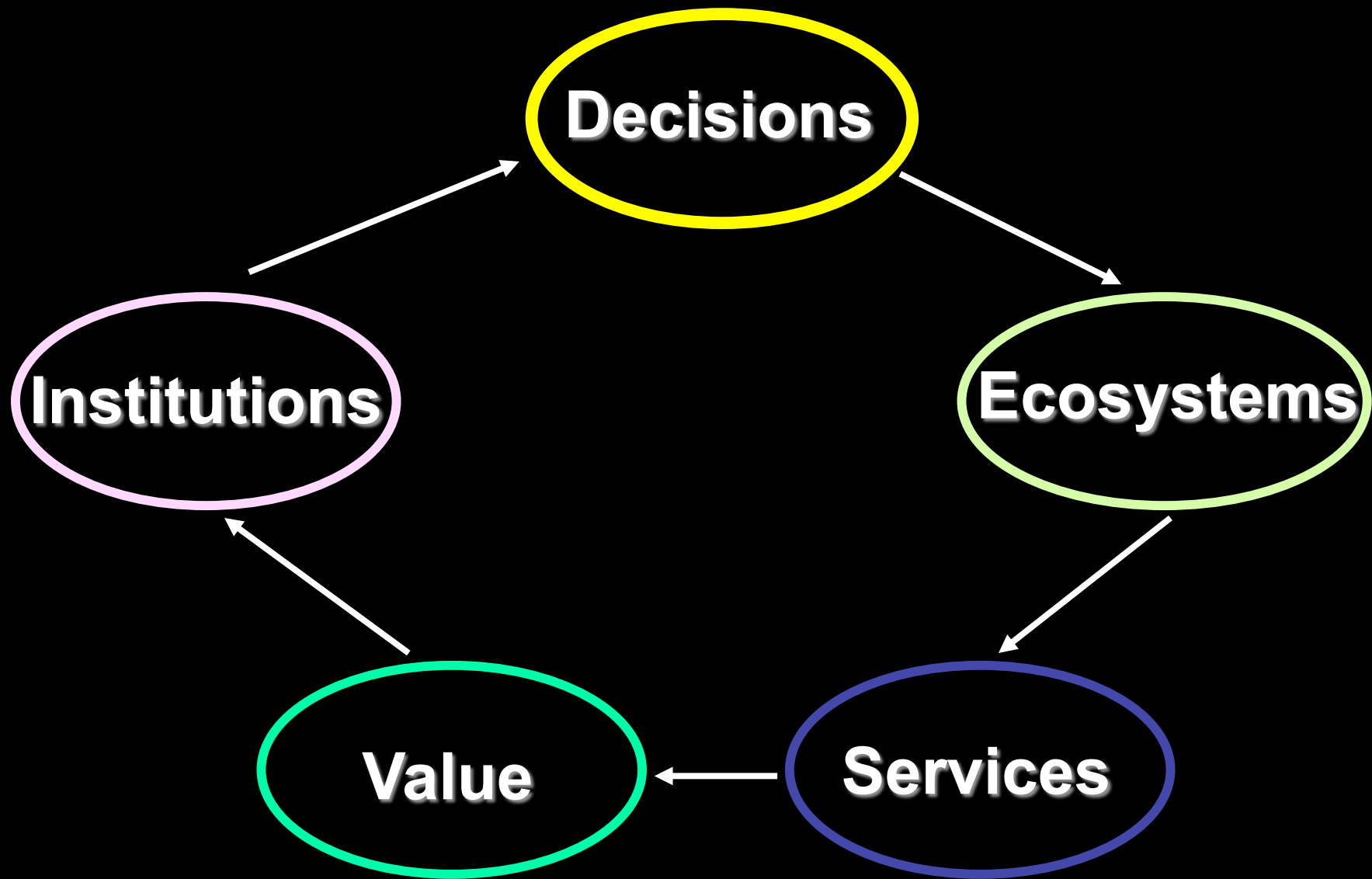
PAGE 71

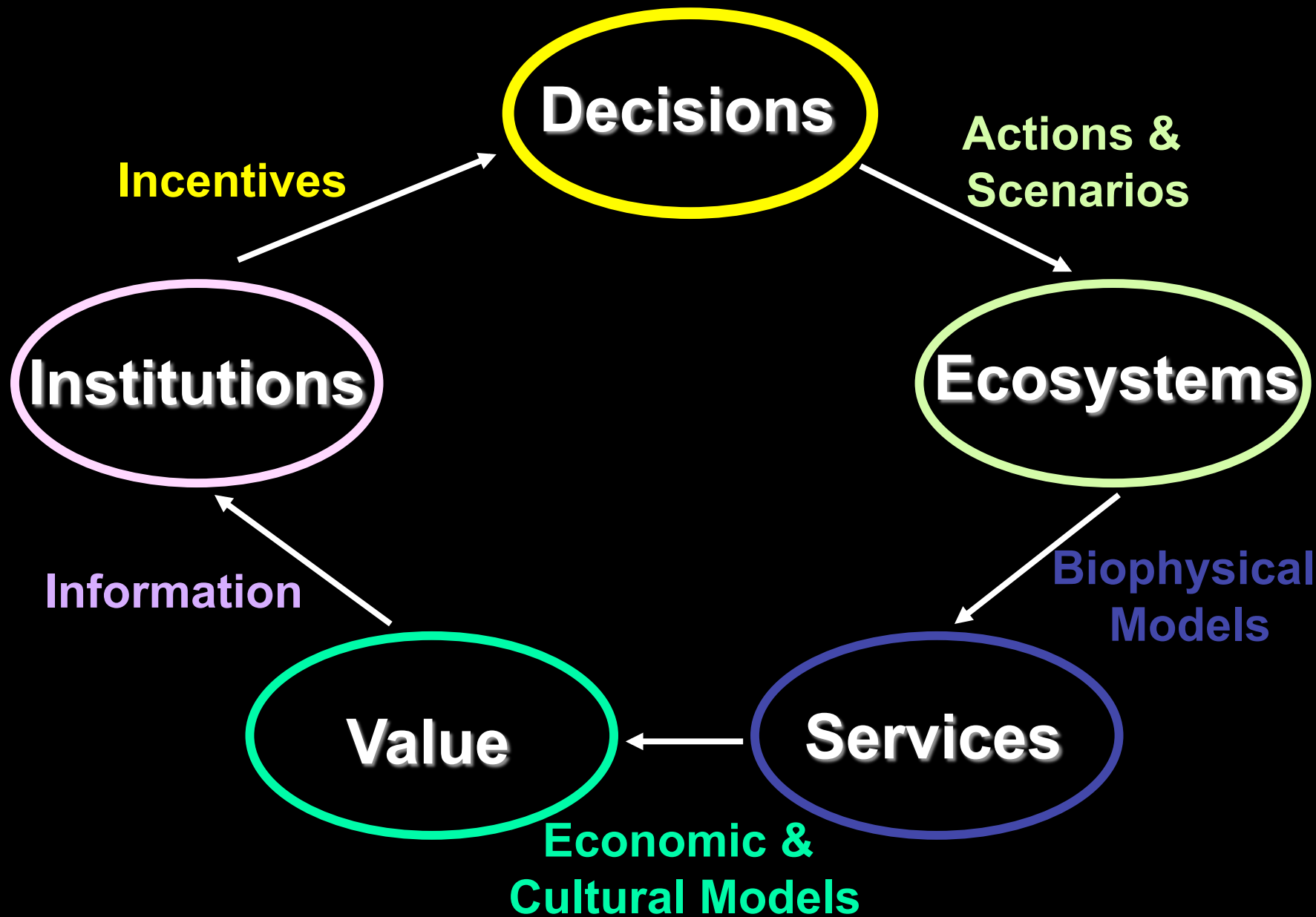
Republicans, Abe and Condi

LEXINGTON, PAGE 36

Rescuing environmentalism (and the planet)









**InVEST:
Integrated Valuation of
Ecosystem Services
& Tradeoffs**

Data inputs on natural capital

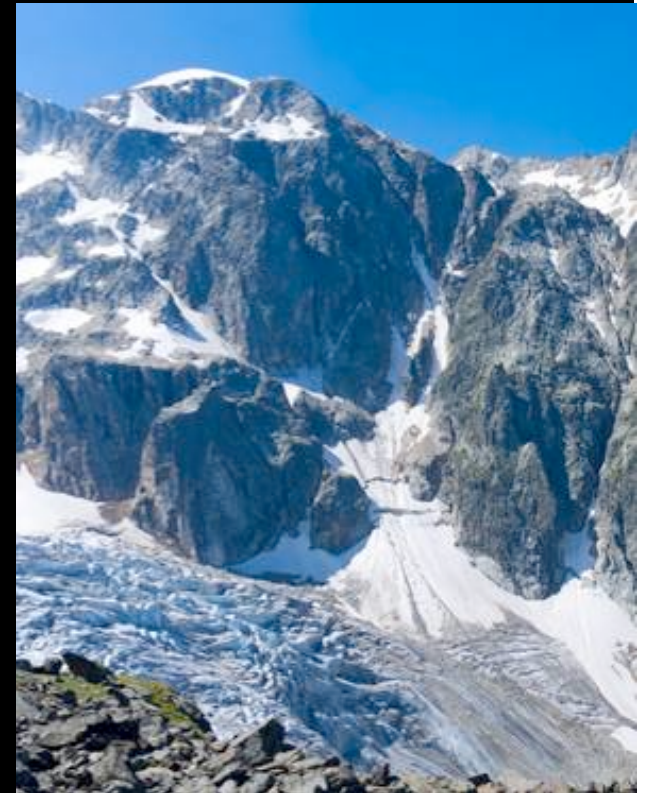
Land Use



Soil type



Topography



Data inputs on built capital

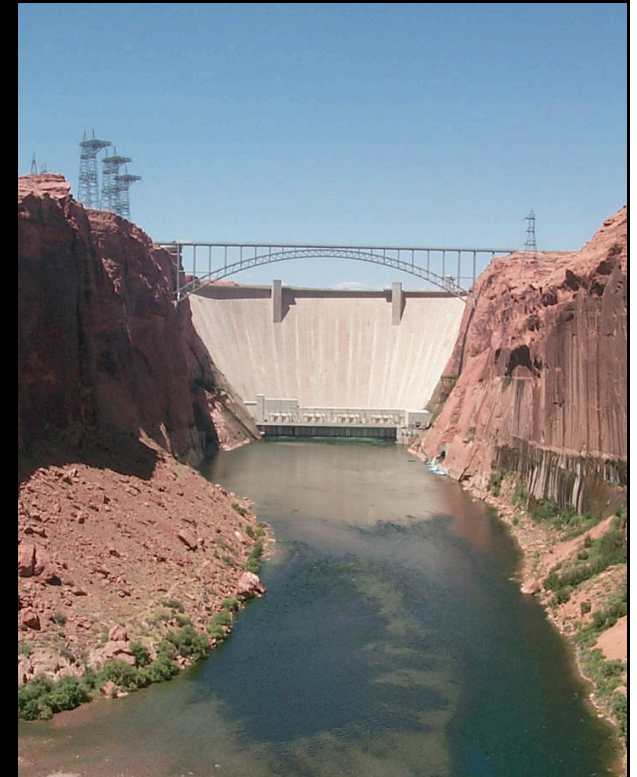
Roads



Cities



Infrastructure

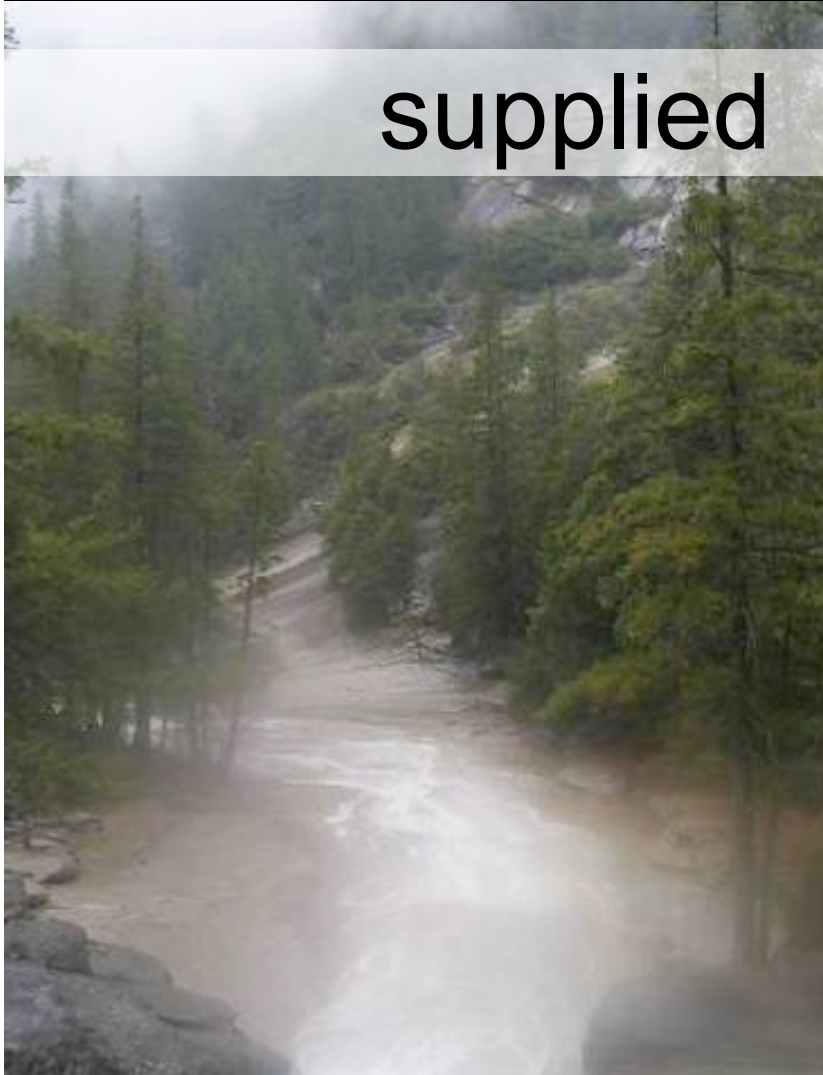


Outputs of ecosystem service levels

supplied

and

demanded



InVEST 1.0 Beta can map

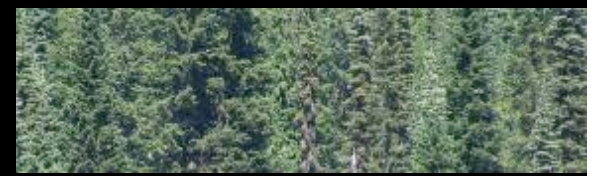
Biodiversity



Water pollution regulation



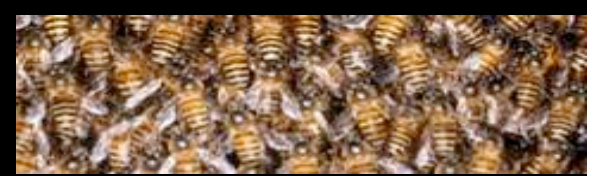
Carbon seq & storage



Managed timber production



Crop pollination



Avoided reservoir sedimentation



The next version of InVEST will add

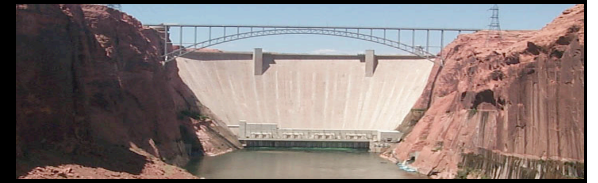
Tourism and recreation



Agricultural production



Flood mitigation



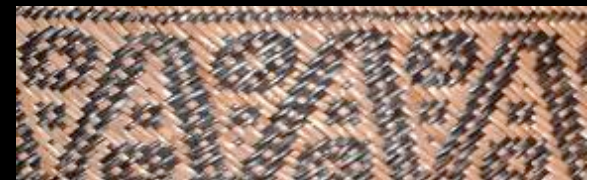
Hydropower production



Irrigation



Open access products



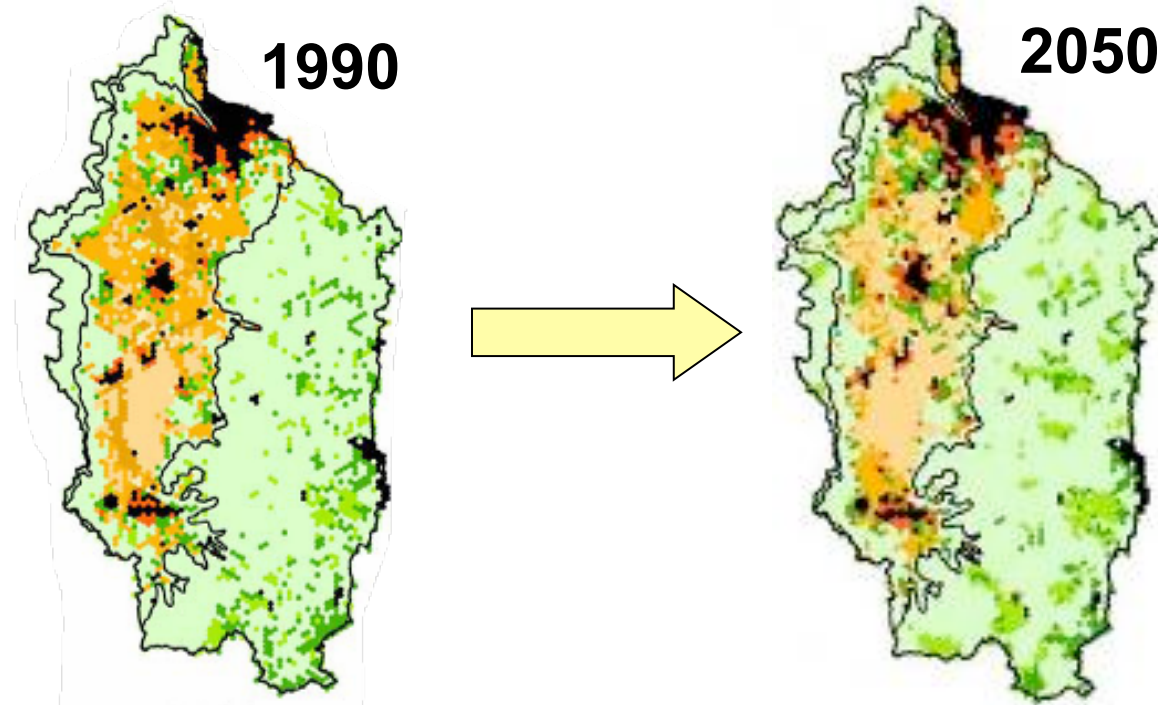
Marine InVEST is under development



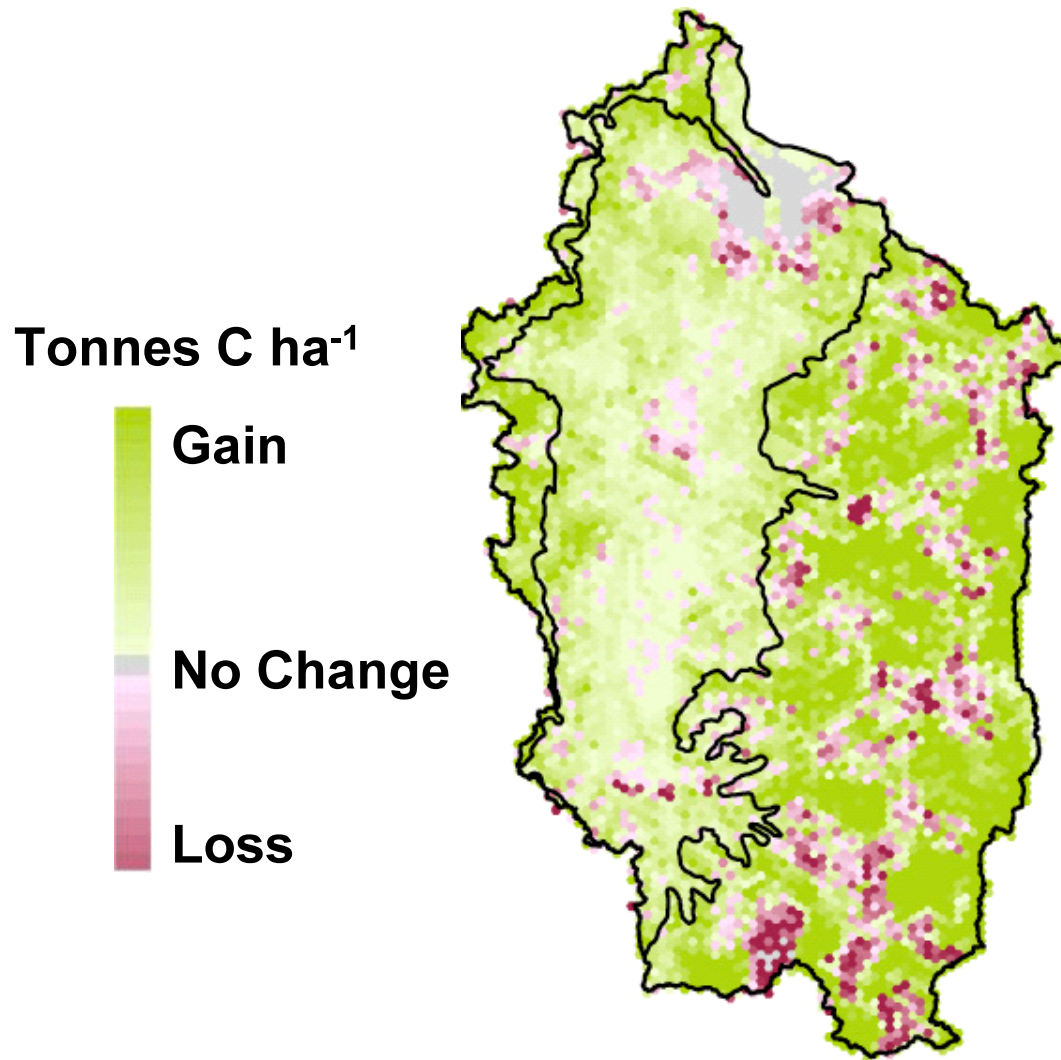
Fisheries
Coastal Protection
Recreation & Tourism

Scenarios and Decisions

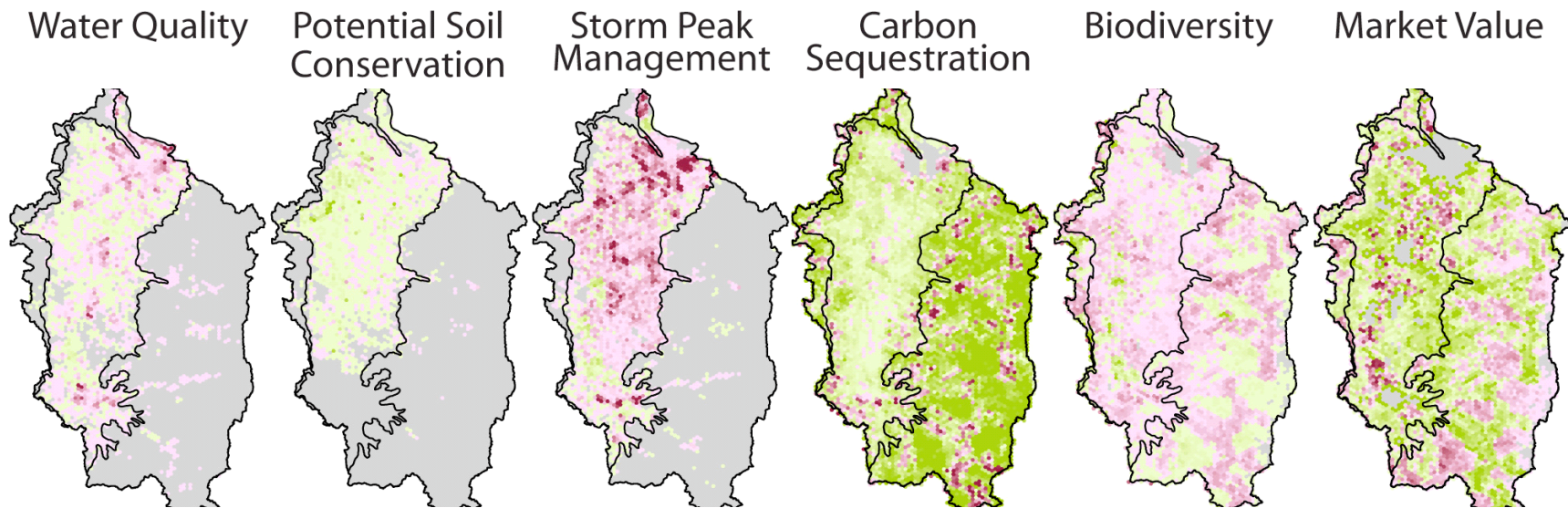
Development in Oregon over the next 50 years:



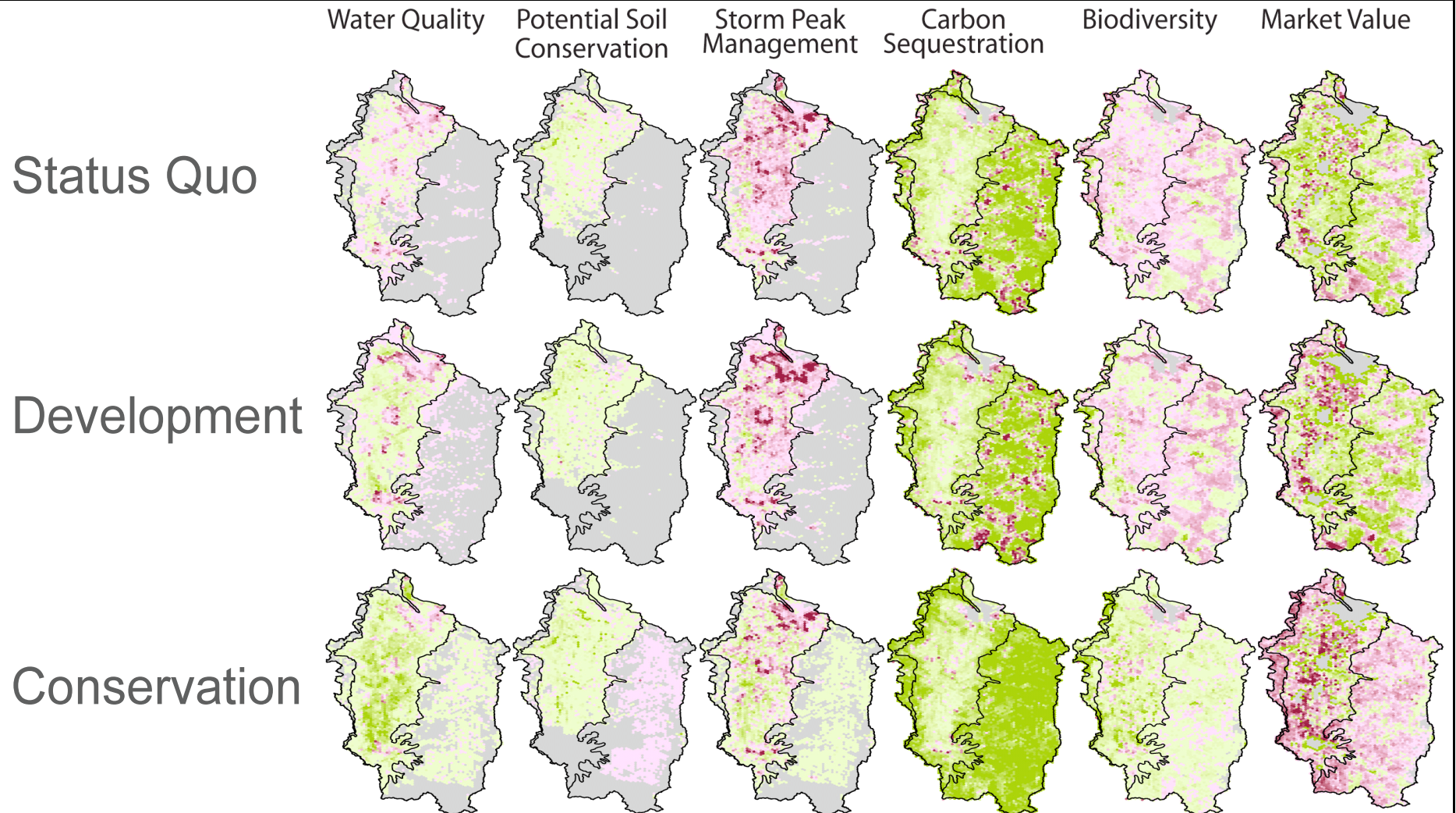
Change in carbon storage



Changes in multiple services

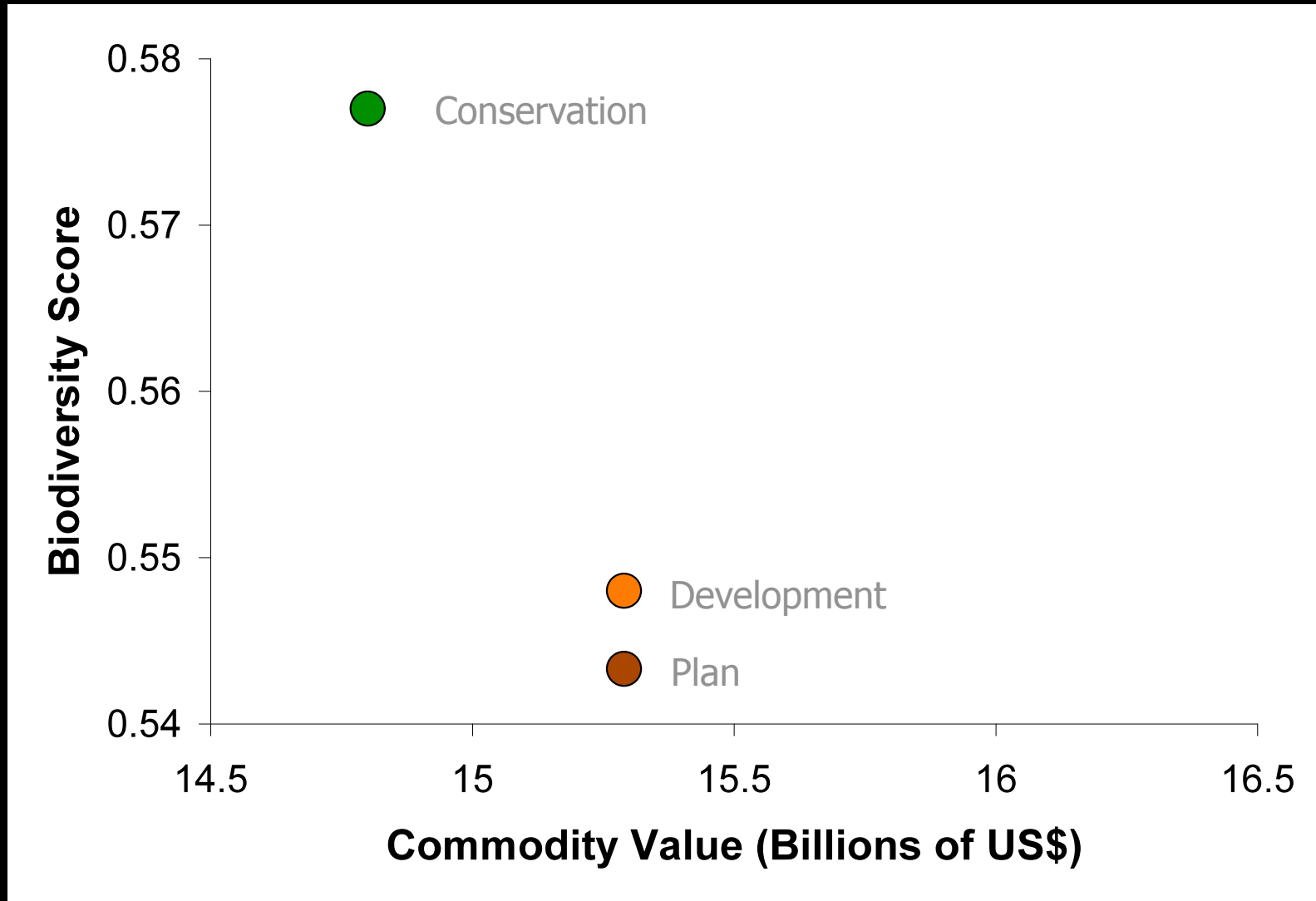


Analysis of alternative futures



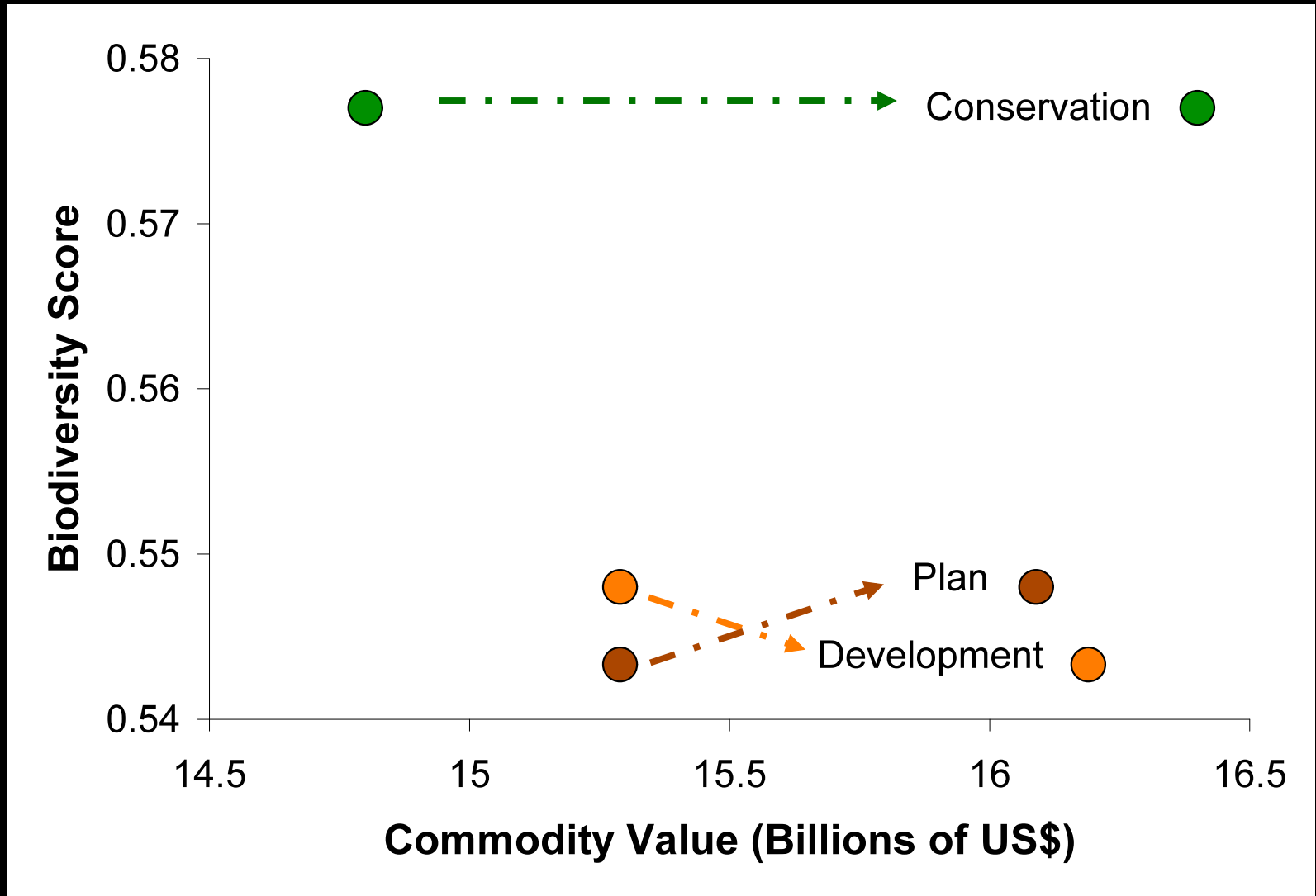
Formal Carbon Market

Without *With*

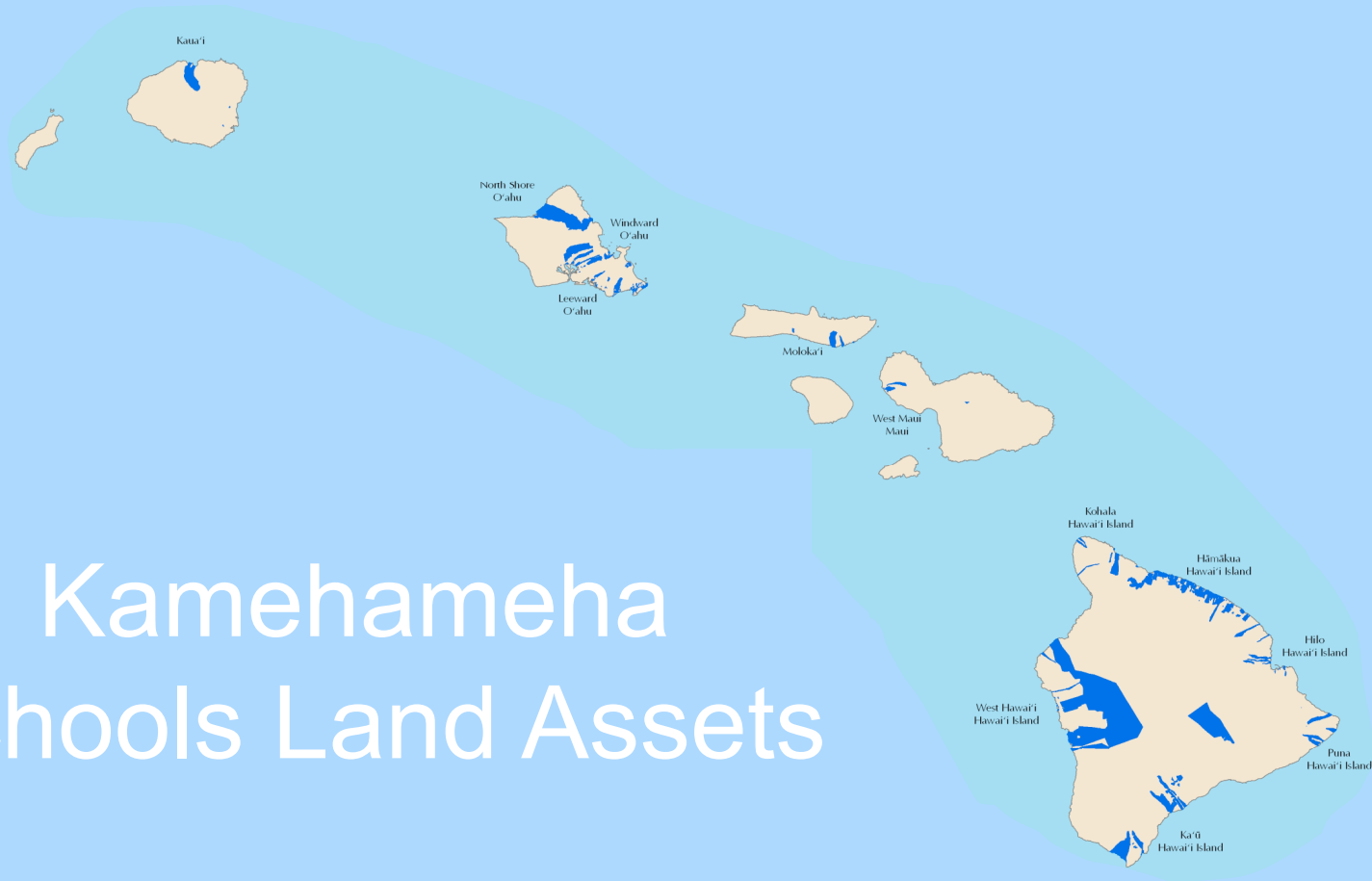


Formal Carbon Market

Without *With*



Kamehameha Schools Land Assets





A new approach, balancing

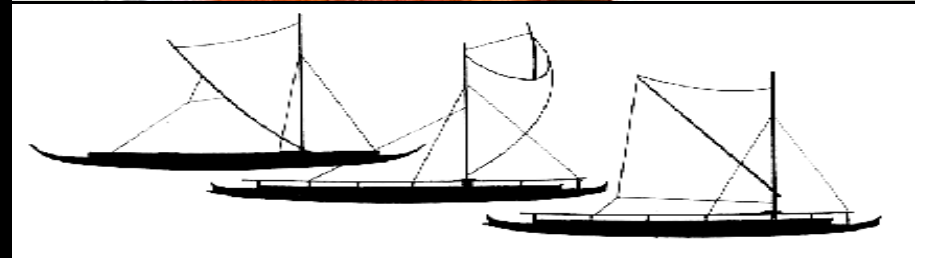
Economic value



Environmental value



Cultural value



Educational value



Community value



26,000 acres on the North Shore of O`ahu

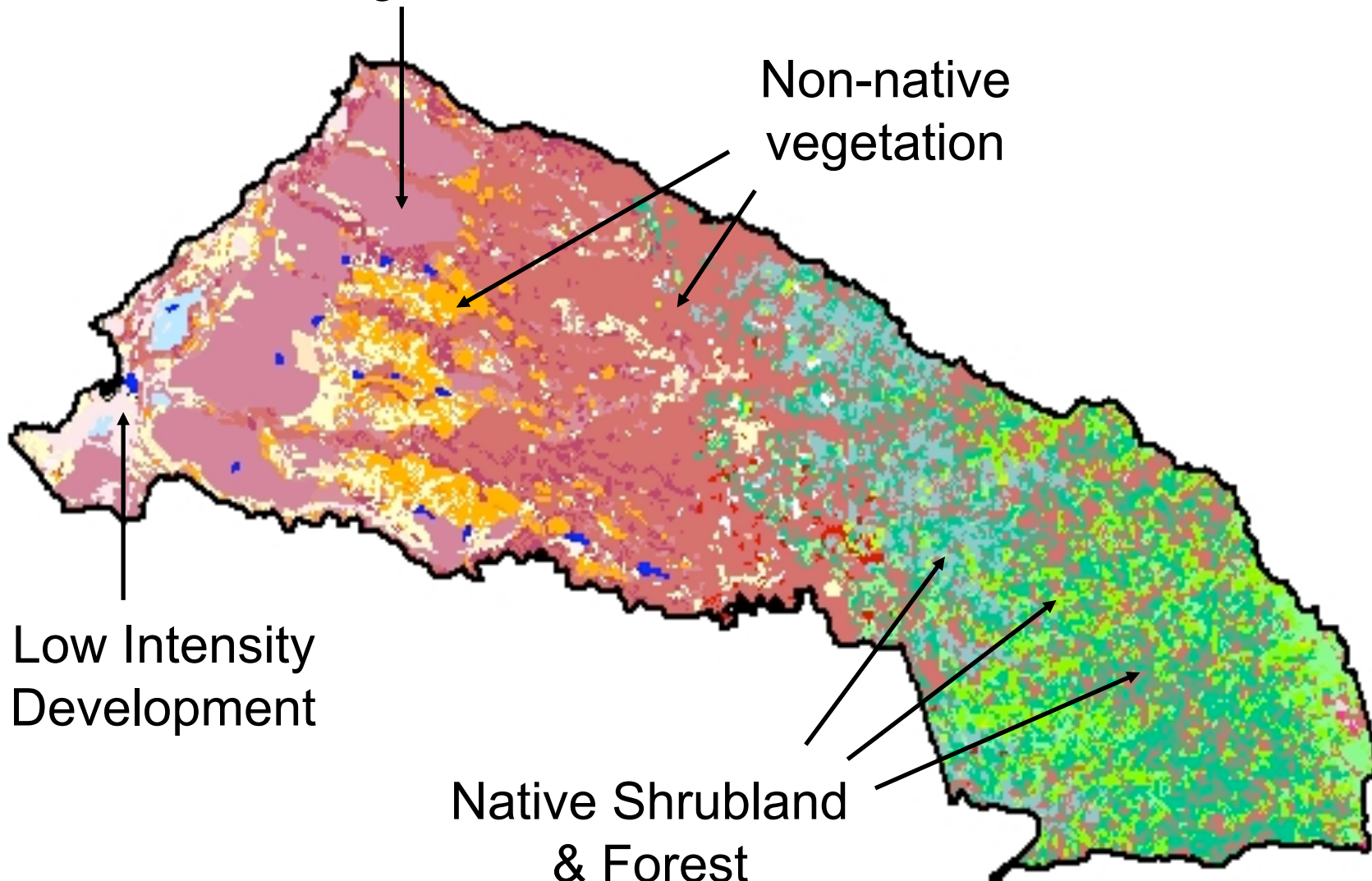


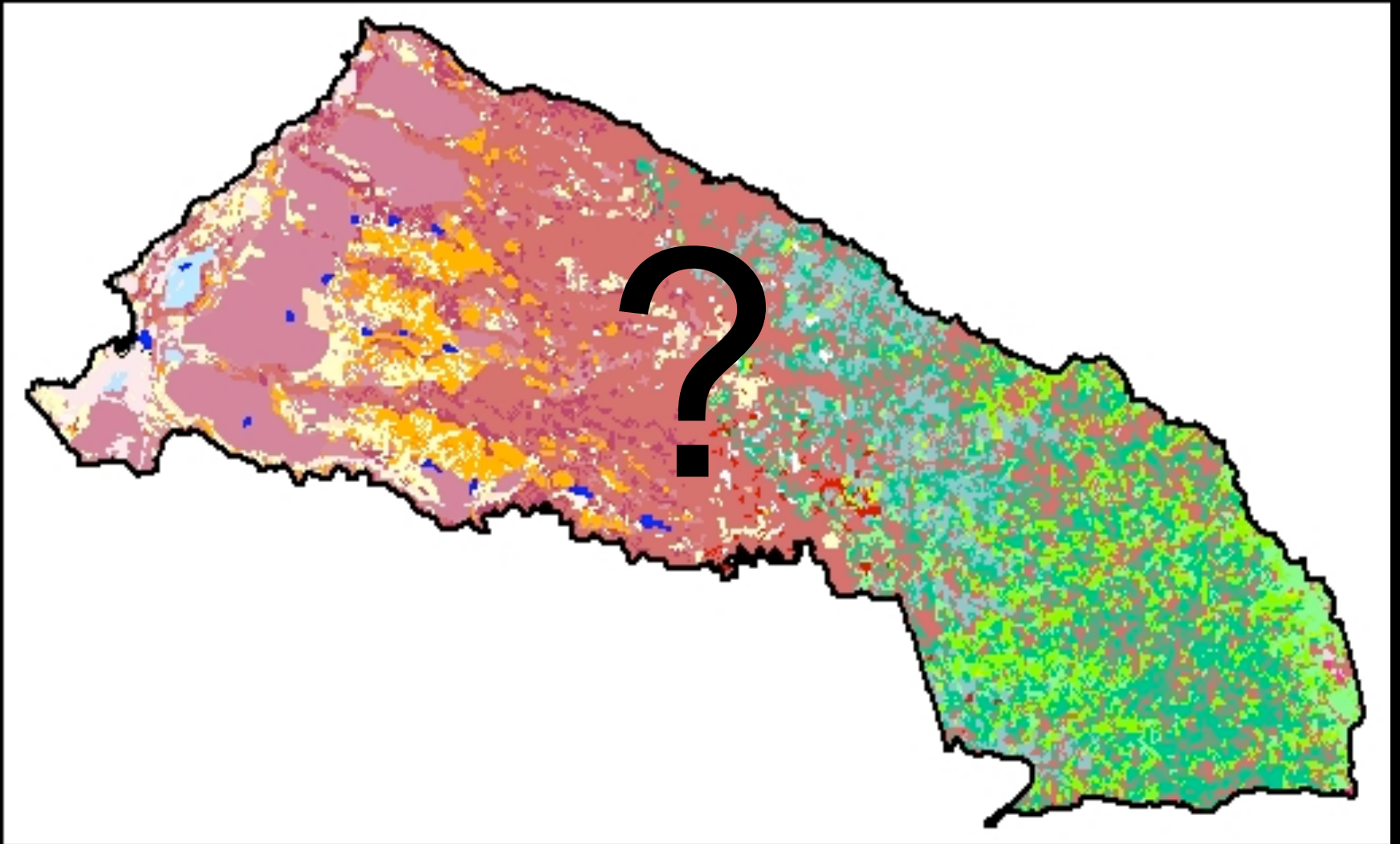
Former Sugar Plantation

Non-native
vegetation

Low Intensity
Development

Native Shrubland
& Forest

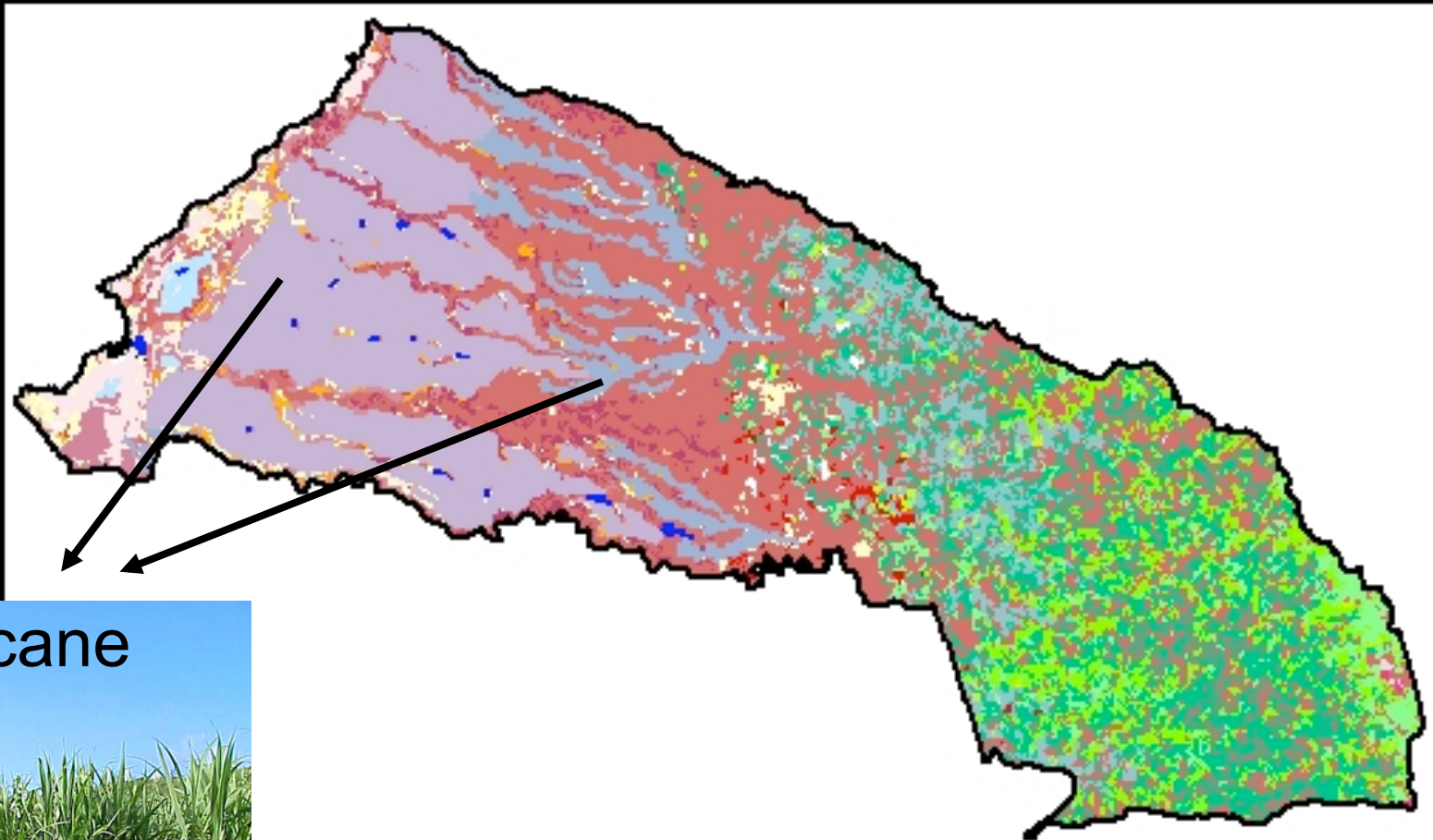




Developing scenarios



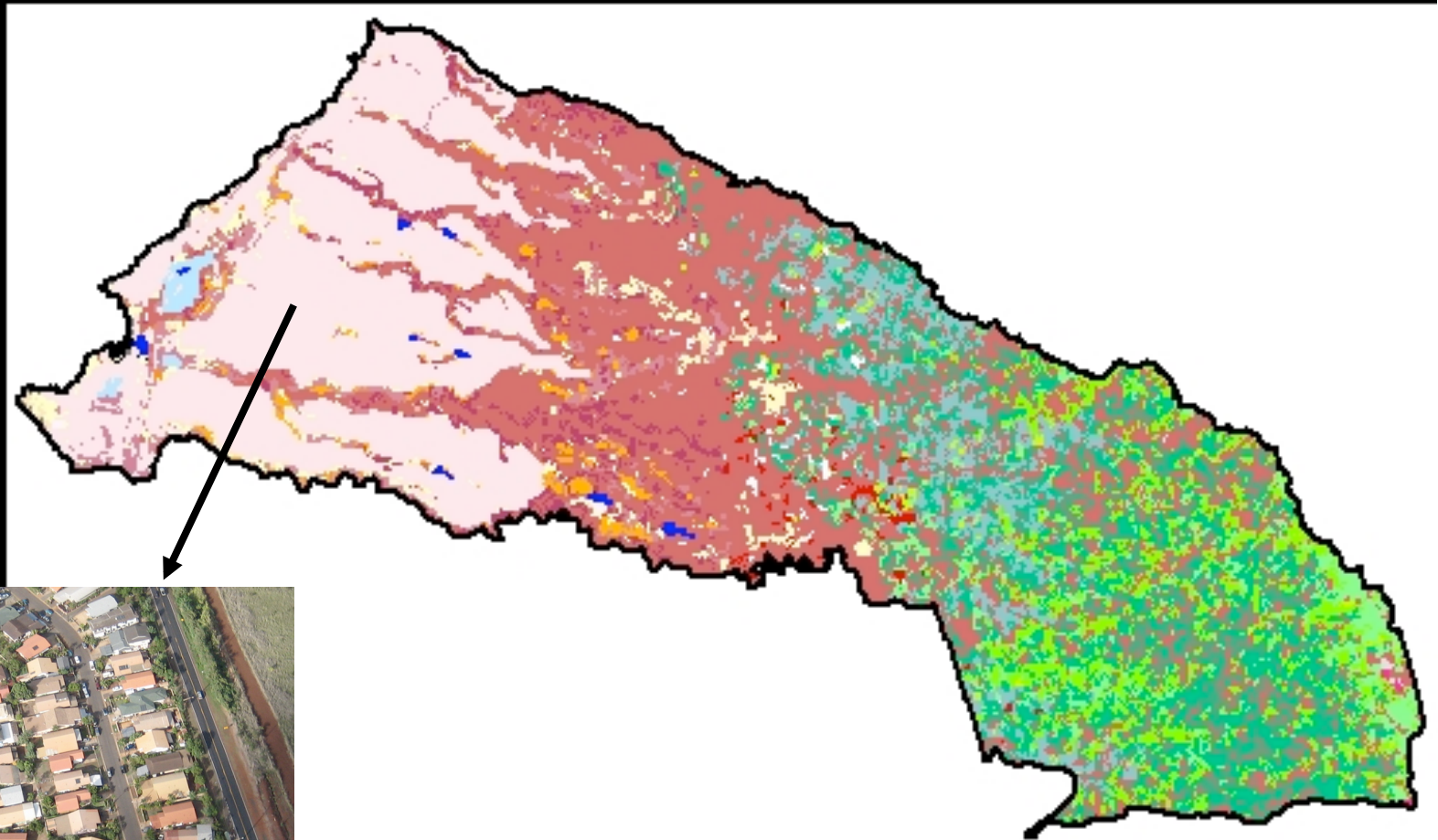
Growing a biofuels feedstock



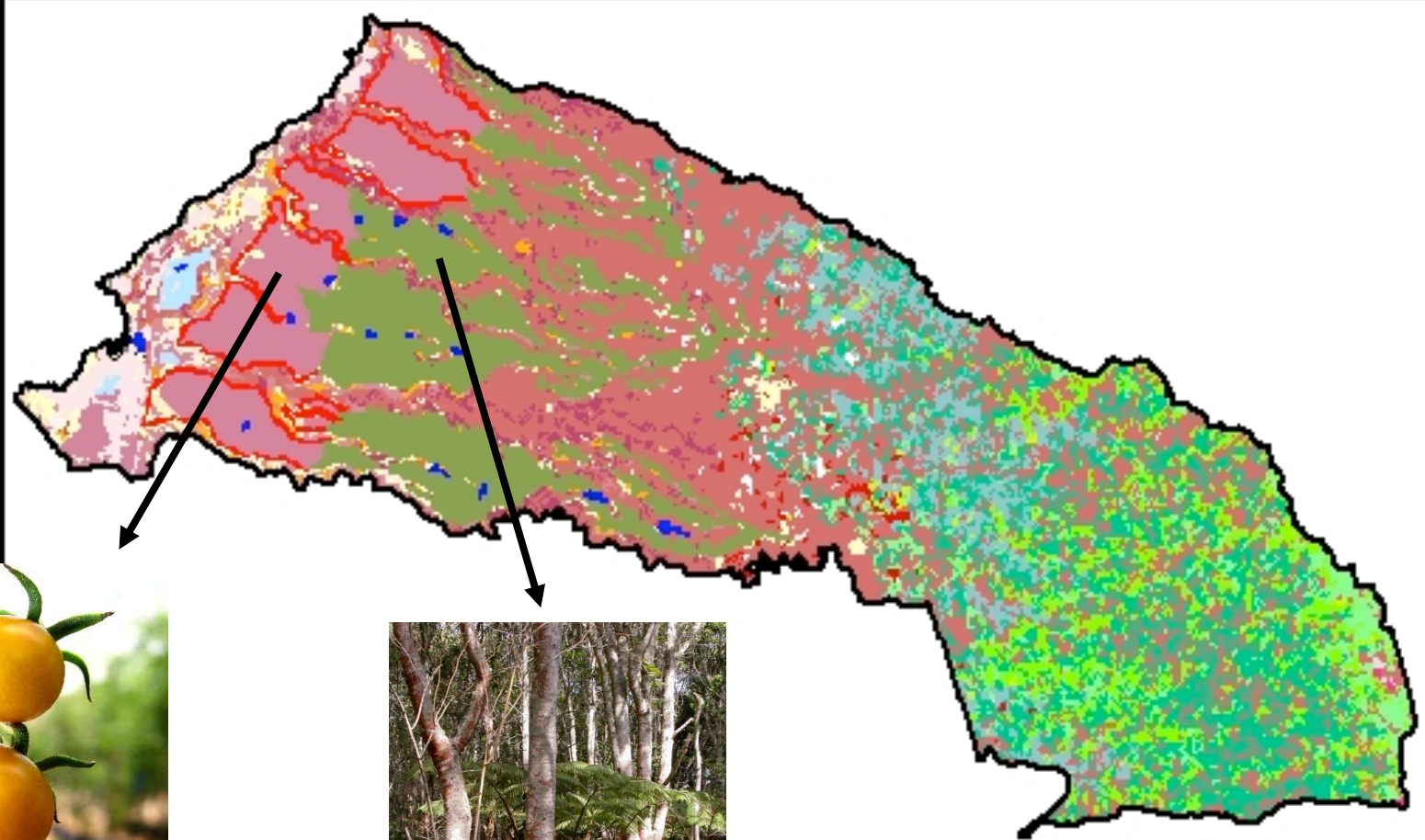
Sugarcane



Expanding residential development



Cultivating diversified agriculture & forestry



InVEST Analysis

Biofuels



Carbon Storage



Water Quality



Water Yield



Income



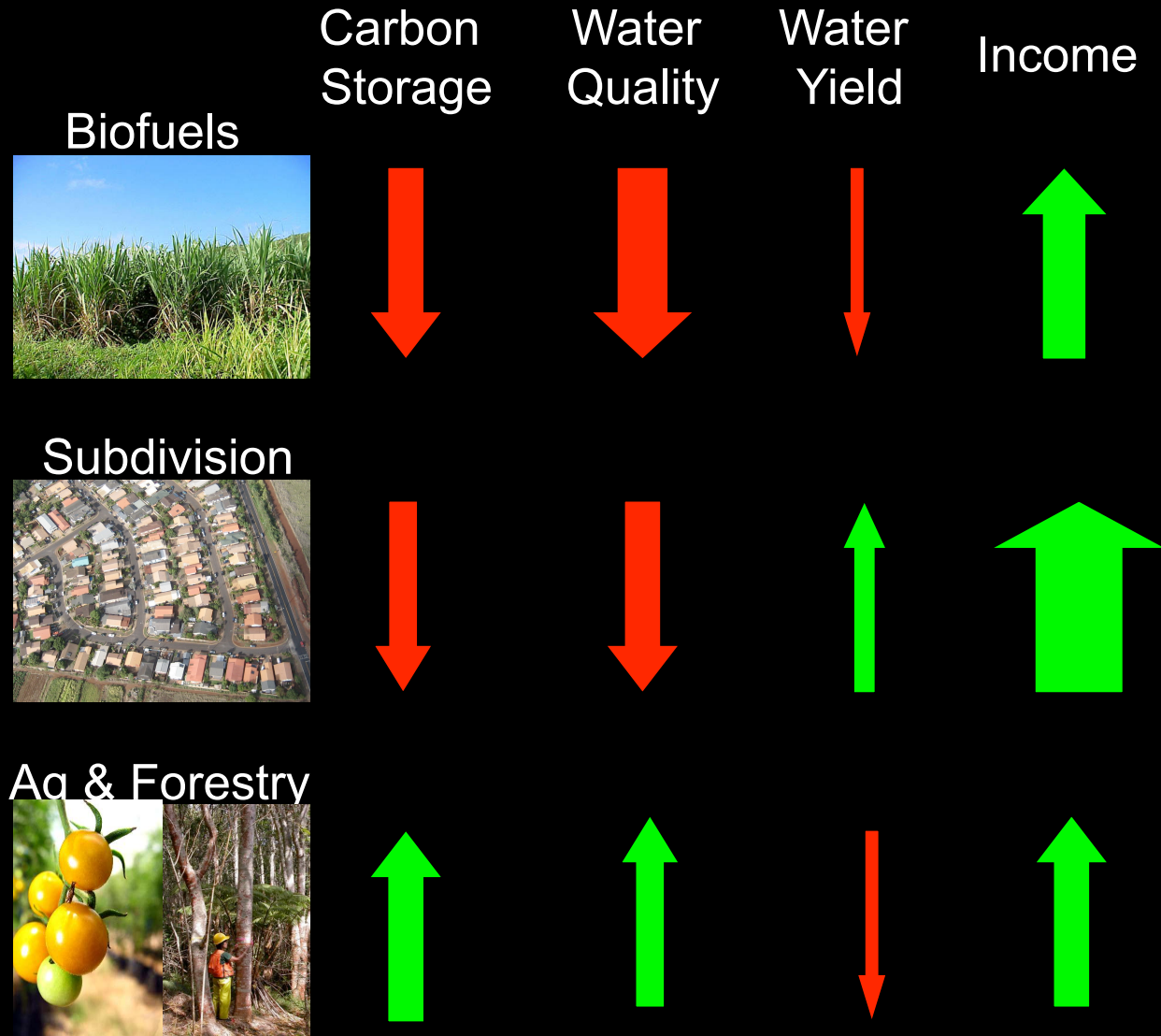
Subdivision



Ag & Forestry



InVEST Analysis





Diversified agriculture and forestry provide the desired balance, with income, climate control and clean water benefits.

The Natural Capital Project



