

# Climate Change, Poverty, and Hunger: Partnerships for Policy Impact

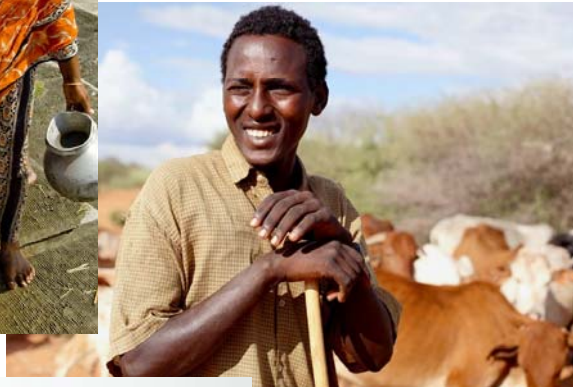
Tonya Rawe, Senior Policy Advocate, CARE USA



# What Does CARE Do?



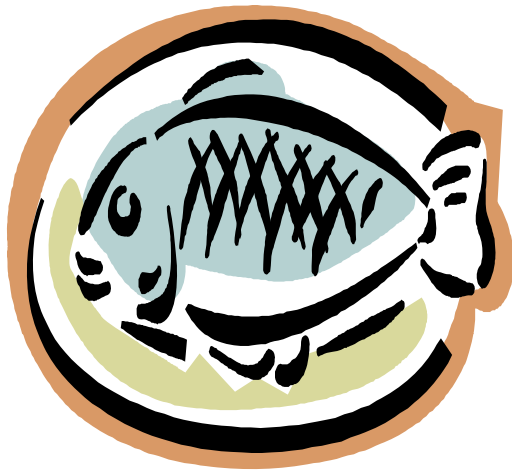
**CARE fights  
global poverty.**



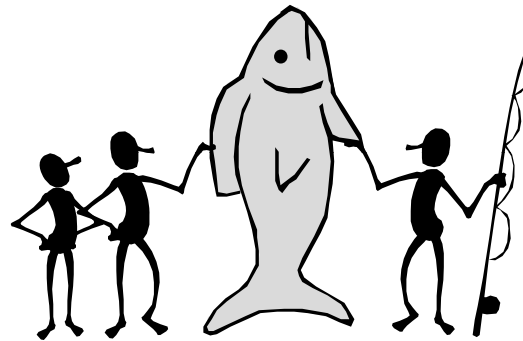
**We place special  
emphasis on  
empowering  
marginalized women  
and girls to bring  
lasting change to their  
communities.**



# From Fish to Fairness



**From giving  
people fish...**



**To teaching them  
how to fish...**



**To empowering them to  
fight for their right to  
the pond.**



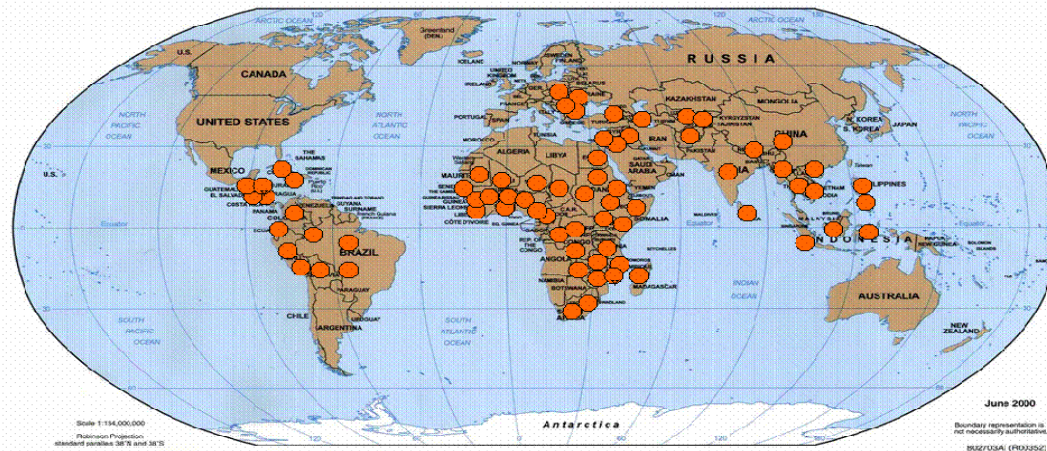
# CARE in 2012: Global Reach



Food &  
Nutrition  
Security

Governance

Gender &  
Empowerment



Health Equity

Climate Change

Emergency Response

**Staff of 10,000 people – 90 percent local  
Impacting more than 122 million in 84 countries**

Would you gamble?



Imagine



# The State of Global Hunger



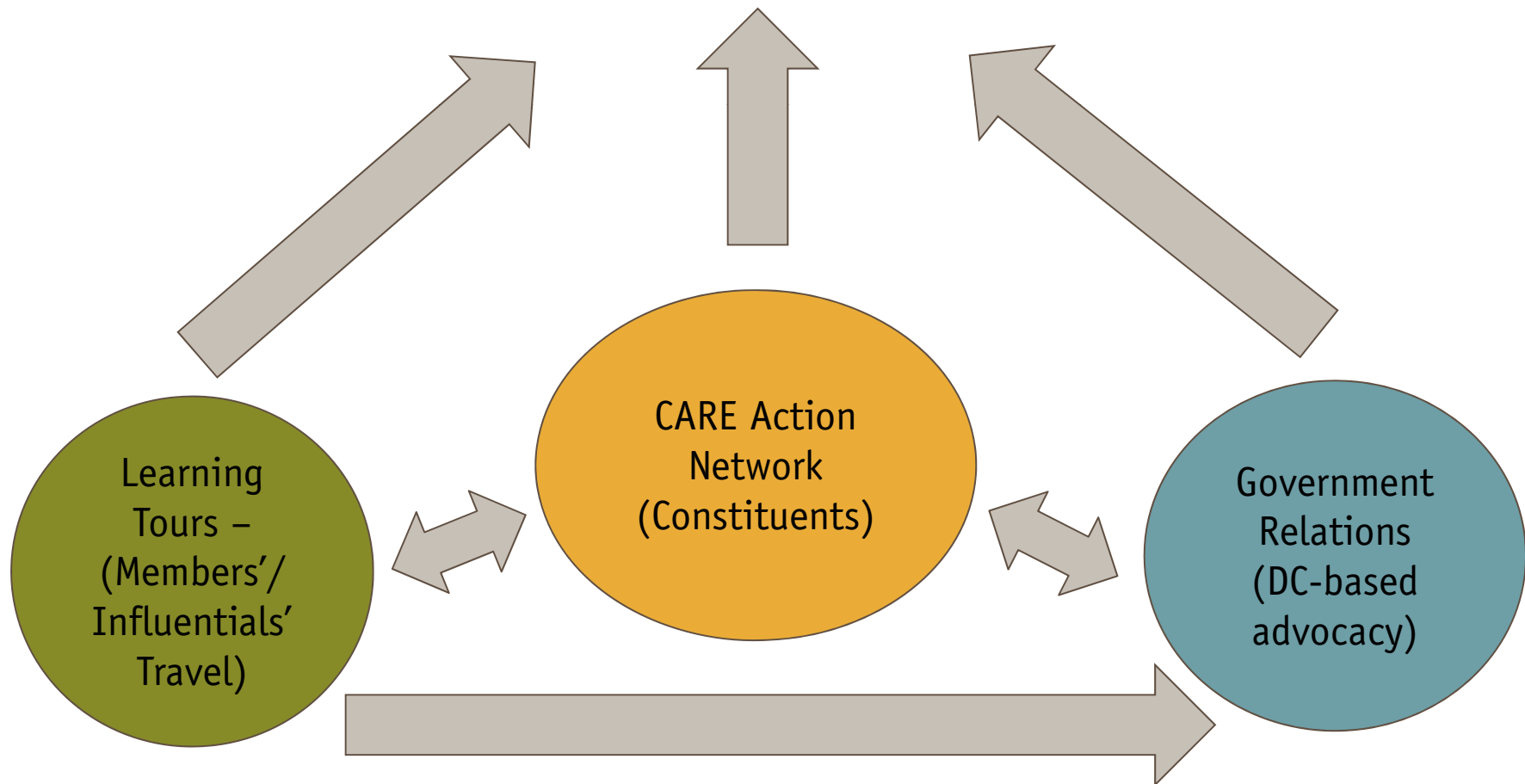
**ONE BILLION PEOPLE**  
**Women and girls**  
**Smallholder farmers**

**Natural Resources**  
**Climate Change**  
**Disasters**

# Policy & Advocacy Unit: Mutually Reinforcing



Build Champions & Effect Change Among  
Members of Congress





# CARE, Climate Change & Hunger



Climate Change Advocacy

Global & US

Congress & Administration

**Leverage Experience**

Build awareness & relationships

**POWER OF PEOPLE**

Partnerships & Coalitions





WHERE <sup>the</sup>  
RAIN FALLS

# Where the Rain Falls:

Climate Change,  
Food and Livelihood  
Security, and  
Migration



UNITED NATIONS  
UNIVERSITY  
**UNU-EHS**  
Institute for Environment  
and Human Security



redefining / standards

MacArthur  
Foundation

A PROJECT OF:



UNITED NATIONS  
UNIVERSITY

SUPPORTED BY:



redefining / standards

MACARTHUR  
The John D. and Catherine T. MacArthur Foundation

**SCOPE:** Research Advocacy Practice

## OBJECTIVES

1. To understand how rainfall variability, food security & migration interact today
2. To understand how these factors might interact in coming decades as the impact of climate change begins to be felt more strongly
3. To work with communities to identify ways to manage rainfall variability, food and livelihood insecurity, and migration.



A PROJECT OF:



UNITED NATIONS  
UNIVERSITY

SUPPORTED BY:



MACARTHUR  
The John D. and Catherine T. MacArthur Foundation

## 4 household profiles:

### Migration improves HH resilience

- **Economy:** poor
- **Adaptation options:** access to livelihoods options & assets (social, economic, political),
- **Education:** Children have 3-5 years more education than parents
- **Migrant:** early 20s, single; temporal migration
- **Remittances:** education, livelihood diversification, health

### Migration used to survive, but not flourish

- **Economy:** land scarce
- **Adaptation options:** less access to assets & institutions for support
- **Education:** Children have same education level as parents
- **Migrant:** HH Head, mid 40s, migration in hunger season
- **Remittances:** Success in obtaining food or money to buy food

### Migration erosive coping strategy

- **Economy:** landless
- **Adaptation options:** few adaptation options in situ, inability to diversify
- **Education:** All HH members have low or no education / skill levels
- **Migrant:** HH Head, mid 40s, migration in hunger season
- **Remittances:** Partial success in obtaining food or money to buy food

### Migration not an option: trapped populations

- **Economy:** chronically food insecure, landless, Female-headed HH
- **Adaptation options:** insufficient assets to adapt locally or through migration
- **Education:**
- **Migrant:** not feasible
- **Remittances:** none. Abandoned / trapped populations



Resilience to climatic stressors

Vulnerability to climatic stressors

A PROJECT OF:



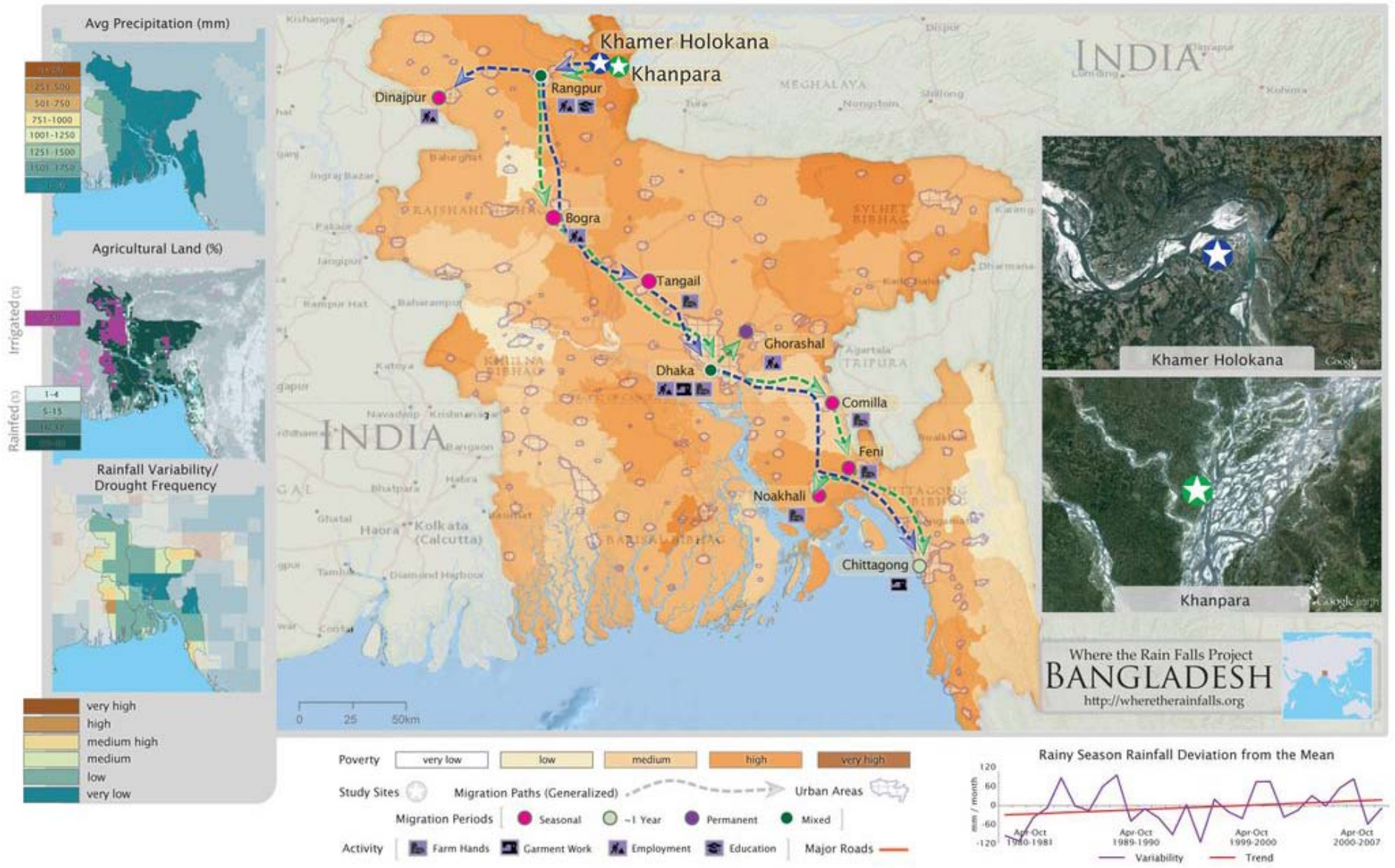
UNITED NATIONS  
UNIVERSITY

SUPPORTED BY:





# WHERE the RAIN FALLS



# Policy Partnerships: Lessons & Insights



Shared agendas = Shared assets

Integrated agenda = Longer shelf life

Clear goals & responsibilities

Partnership management takes resources

Least common denominator

Strength in numbers

Strange bedfellows

Amplified voice





# Your Turn: Plant the Seeds of Change



Friends  
Colleagues  
Family  
Policymakers  
Join the movement

Thanks!



[www.care.org/getinvolved](http://www.care.org/getinvolved)

[www.careclimatechange.org](http://www.careclimatechange.org)

Follow CARE USA on Twitter and Facebook