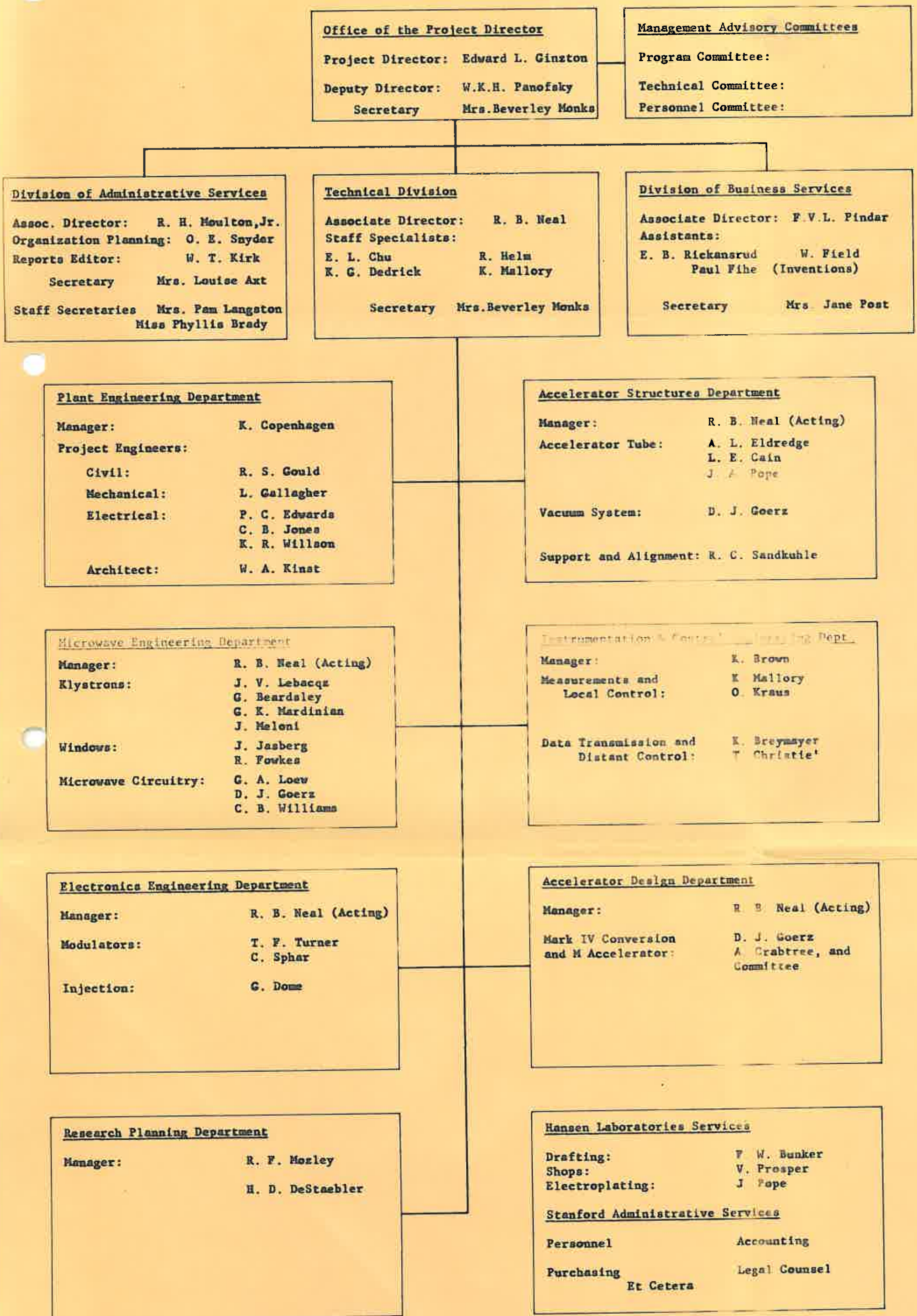


December 19, 1960.



Office of the Project Director
 Project Director: Edward L. Ginzton
 Deputy Director: W.K.H. Panofsky
 Secretary: Mrs. Beverley Monks

Management Advisory Committees
 Program Committee:
 Technical Committee:
 Personnel Committee:

Division of Administrative Services
 Assoc. Director: R. H. Moulton, Jr.
 Organization Planning: O. E. Snyder
 Reports Editor: W. T. Kirk
 Secretary: Mrs. Louise Art
 Staff Secretaries: Mrs. Pam Langston, Miss Phyllis Brady

Technical Division
 Associate Director: R. B. Neal
 Staff Specialists:
 E. L. Chu, R. Helm
 K. G. Dedrick, K. Mallory
 Secretary: Mrs. Beverley Monks

Division of Business Services
 Associate Director: F.V.L. Pindar
 Assistants:
 E. B. Rickansrud, W. Field
 Paul Fihe (Inventions)
 Secretary: Mrs. Jane Post

Plant Engineering Department
 Manager: K. Copenhagen
 Project Engineers:
 Civil: R. S. Gould
 Mechanical: L. Gallagher
 Electrical: P. C. Edwards, C. B. Jones, K. R. Willson
 Architect: W. A. Kinast

Accelerator Structures Department
 Manager: R. B. Neal (Acting)
 Accelerator Tube: A. L. Eldredge, L. E. Cain, J. A. Pope
 Vacuum System: D. J. Goerz
 Support and Alignment: R. C. Sandkuhle

Microwave Engineering Department
 Manager: R. B. Neal (Acting)
 Klystrons: J. V. Lebacqz, G. Beardsley, G. K. Mardinian, J. Meloni
 Windows: J. Jasberg, R. Fowkes
 Microwave Circuitry: G. A. Loew, D. J. Goerz, C. B. Williams

Instrumentation & Control Engineering Dept.
 Manager: K. Brown
 Measurements and Local Control: K. Mallory, O. Kraus
 Data Transmission and Distant Control: K. Breymayer, T. Christie

Electronics Engineering Department
 Manager: R. B. Neal (Acting)
 Modulators: T. F. Turner, C. Sphar
 Injection: G. Dome

Accelerator Design Department
 Manager: R. B. Neal (Acting)
 Mark IV Conversion and M Accelerator: D. J. Goerz, A. Crabtree, and Committee

Research Planning Department
 Manager: R. F. Mozley, H. D. DeStaebler

Hansen Laboratories Services
 Drafting: F. W. Bunker
 Shops: V. Prosper
 Electroplating: J. Pope
Stanford Administrative Services
 Personnel, Accounting
 Purchasing, Legal Counsel
 Et Cetera